



FK



FKS



FLD



FZ

FKAR	-6	-30	-6		
型号 Model	溢流阀调压范围 Relief Valve Pressure Range (MPa)	公称流量 Rated Flow (l/min)	双缓阀调压范围 Dual Shockproof Valve Pressure Range (Mpa)	单向阀开启压力 Inlet Check Valve Open Pressure (Mpa)	补油阀开启压力 Suction Valve Open Pressure (MPa)
FKAR	2.5~16	30/60	6.3~20	0.1	0.05
FKA					
FKSA					
FKBR	2.5~16	30	6.3~20	0.1	0.05
FKB					
FKSB					
FKC	2.5~16	30/60			
FKSC					

AR: 集成单向阀, 溢流阀, 双向缓冲阀和双向补油阀 Contains inlet check valve, relief valve, dual shockproof valve and suction valve

BR: 集成单向阀, 双向缓冲阀和双向补油阀 Contains inlet check valve, dual shockproof valve and suction valve

A: 集成单向阀, 溢流阀, 双向缓冲阀 Contains inlet check valve, relief valve, dual shockproof valve

B: 集成单向阀和双向缓冲阀 Contains inlet check valve and dual shockproof valve

C: 集成单向阀, 溢流阀 Contains inlet check valve and relief valve

FK: 方阀块Crossover relief valve

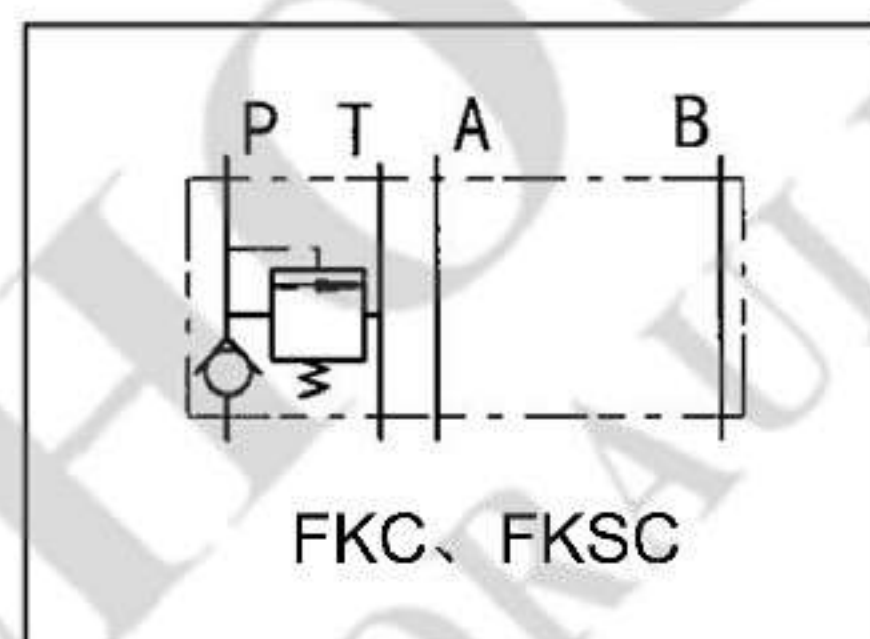
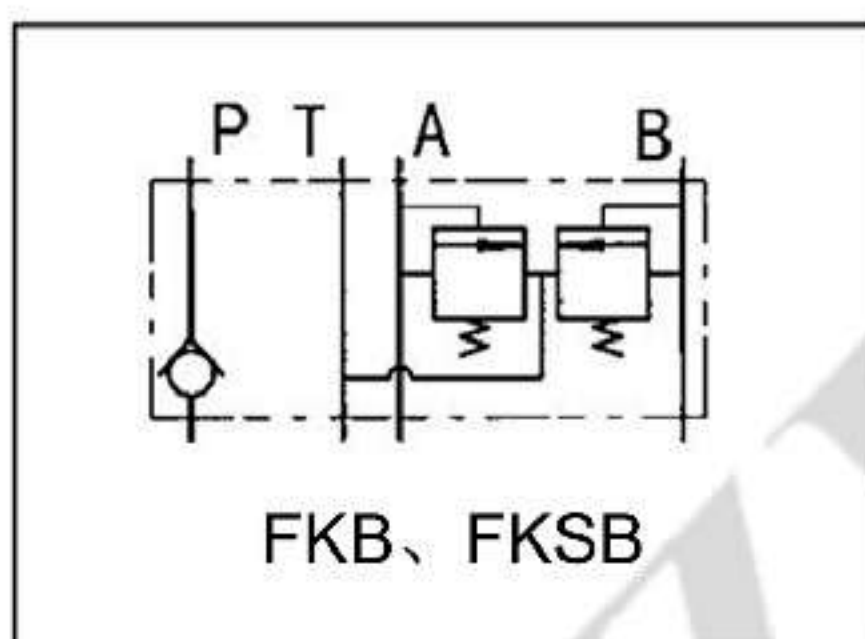
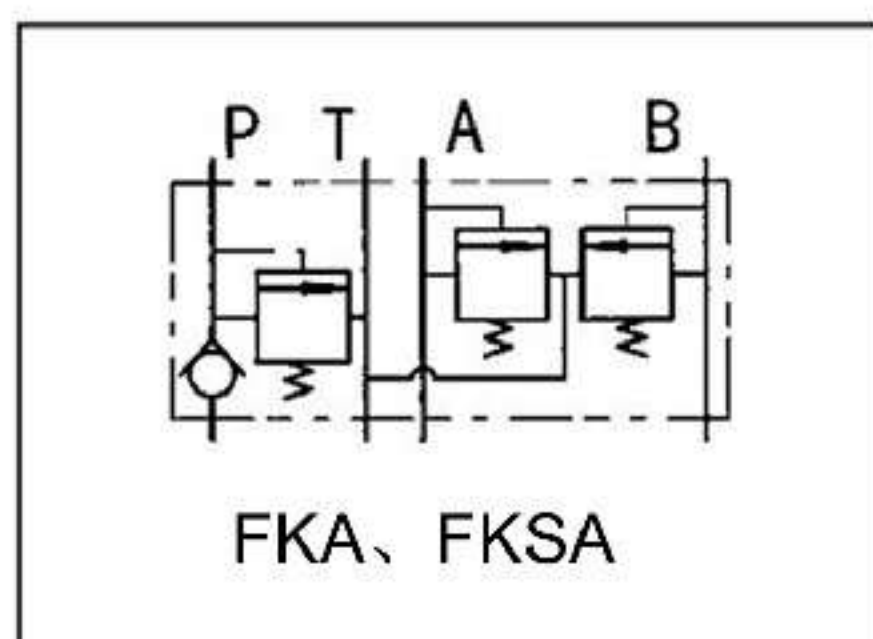
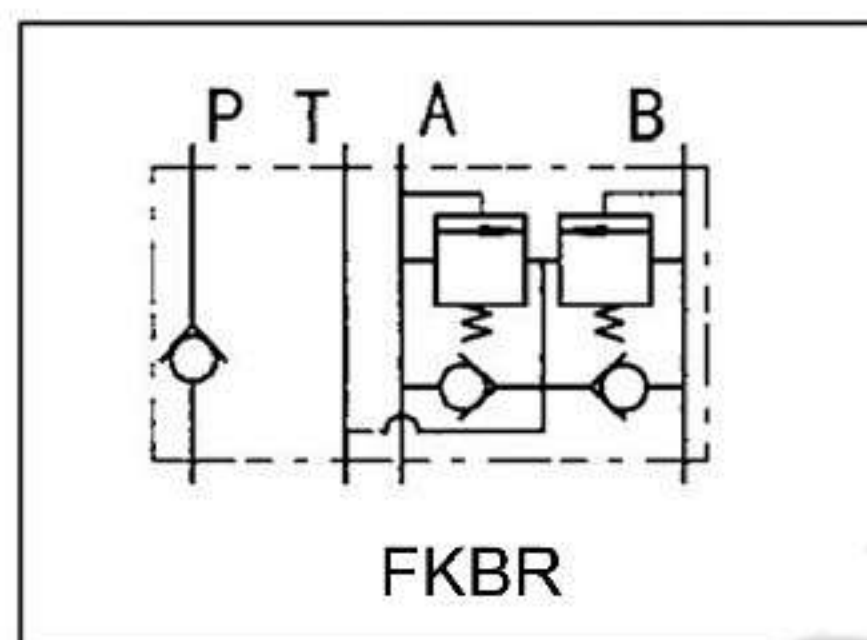
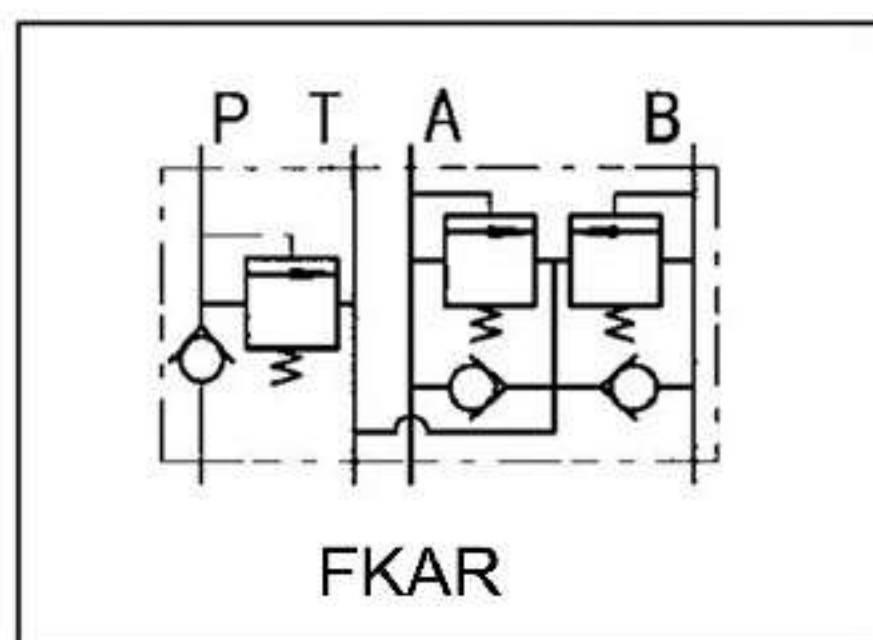
FKS: 平行油口阀块Cushion crossover anticavitation relief valve

FLD	-F	12	F
型号 Model	最大入口压力 Max.Input Pressure	公称稳定流量Rated Flow L/min	最大入口流量 Max.input Flow (L/min)
FLD 单路稳定 分流阀 Flow Divider Valve	F: 20Mpa	4,6,7.5,9.5,12,15	45
		19,24,30	90
		38,48,60,75	200
			F: Dividing Flow H: 恒流型Constant Flow W: 无安全阀分流型 Non-relief Valve Dividing Flow

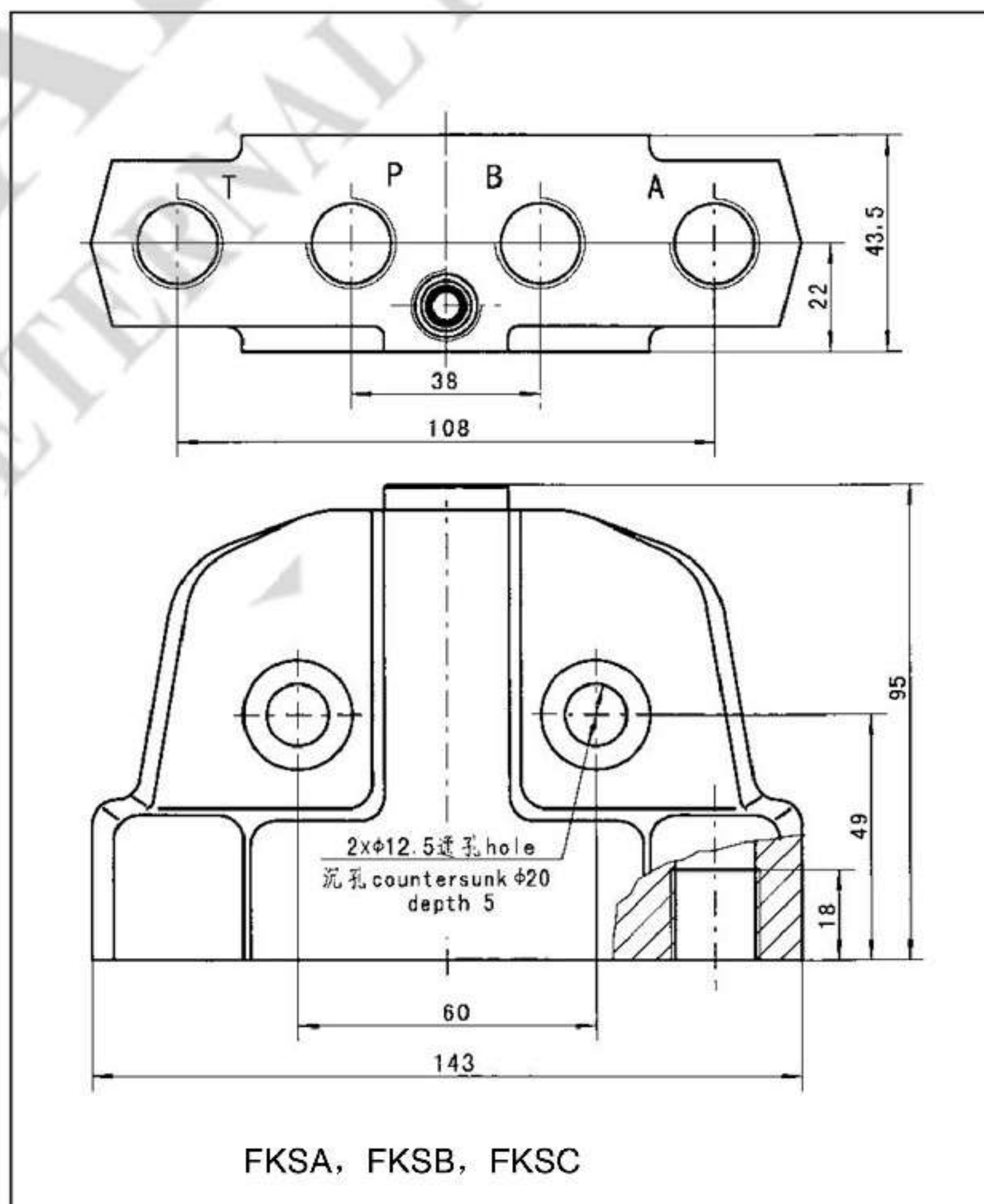
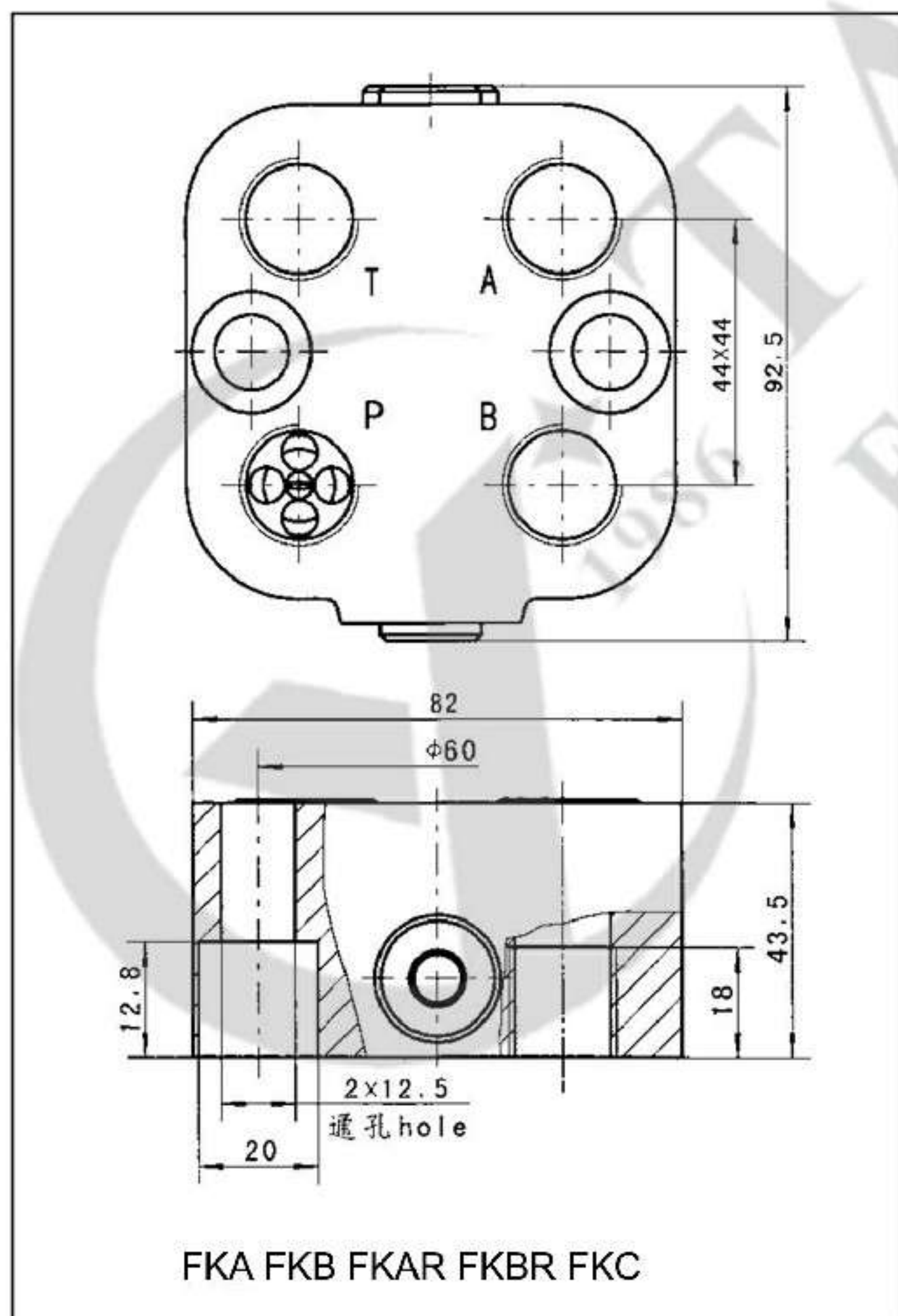
FZ	2	200	H	Ha	F
型号 Model	功能 Function	转向柱长度 Length of the Steering column	方向盘连接形式 Steering-Wheel Linkage Type	输出端连接形 式Output end linkage type	法兰连接形式 Flange linkage type
FZ 转向柱 Steering Columns	1: 不带喇叭线 Without horn wire 2: 上端出喇叭线 With horn wire from top 2a: 侧面出喇叭线 With horn wire from side	140, 200, 225, 250, 275, 300, 325, 350, 400, 450, 475, 500, 550, 600, 650, 700, 750, 800, 850, 900, 950, 1000, 1100, 1200	H:三角花键(锥轴 1:12)Serration (Taper Shaft1:12) D:单键(锥轴 1:12)Woodruffkey (Taper shaft 1:12)	Ha: SAE 花键Spline Ea: 扁舌 Tongue	F:正方形 Square

■ FK型组合阀块
FK Type Combinatory Valve Block

■ 功能符号 Function Code

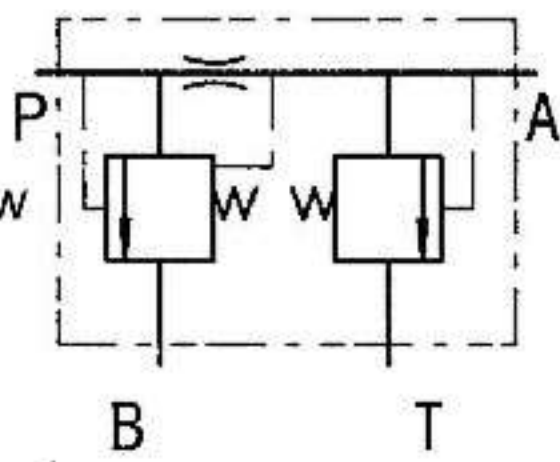


■ 连接尺寸 Mounting Data

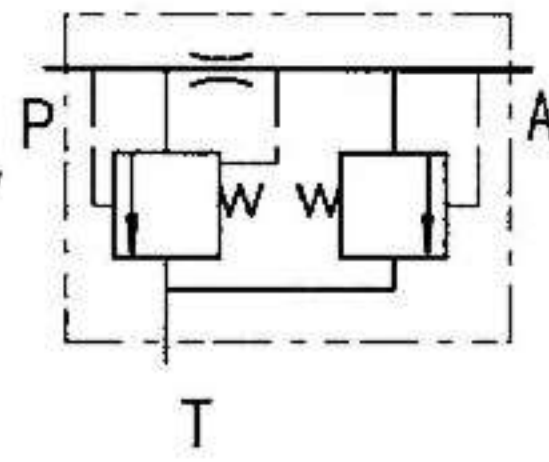


功能符号 Function Code

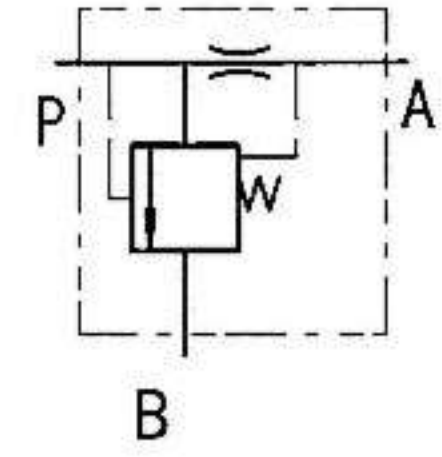
分流型
Dividing Flow



恒流型
Constant Flow

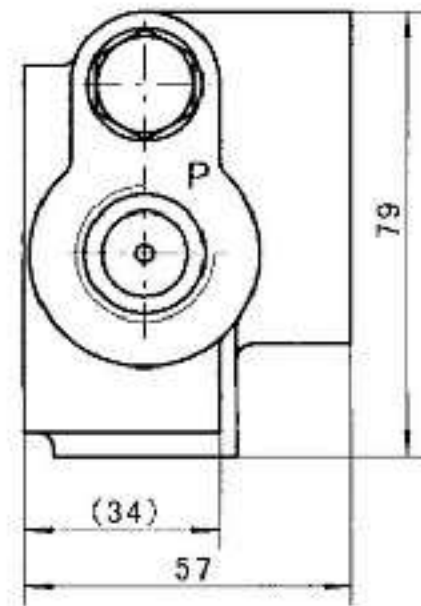
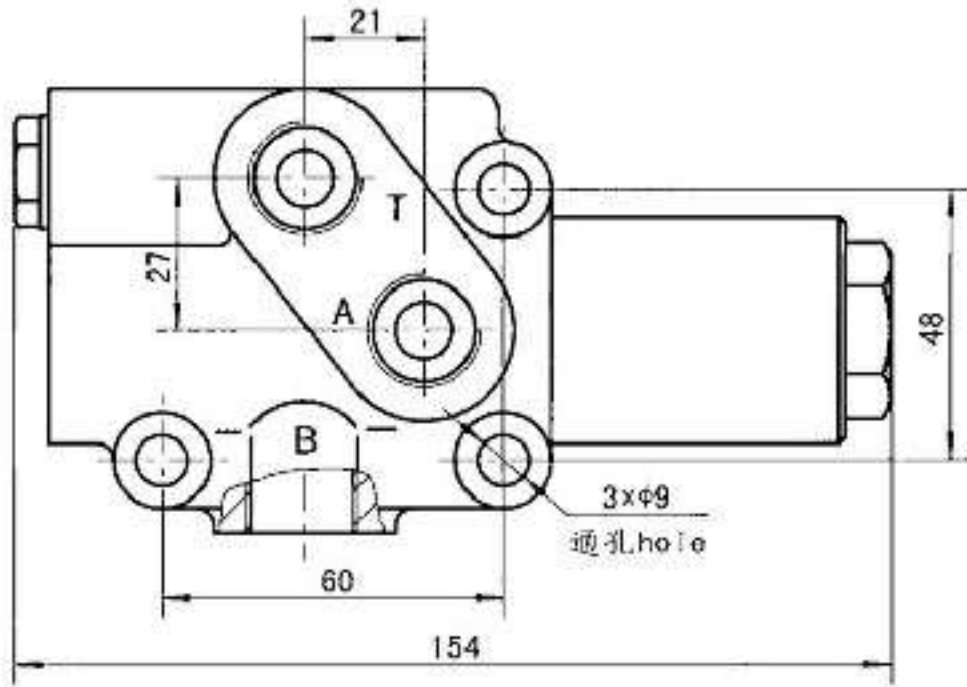


无安全阀分流型
Non-Relief Valve
Dividing Flow

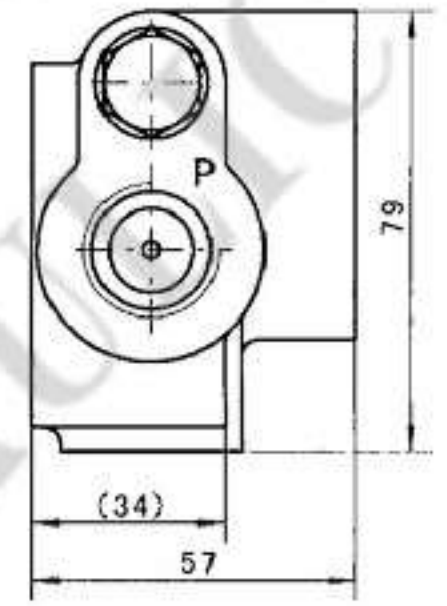
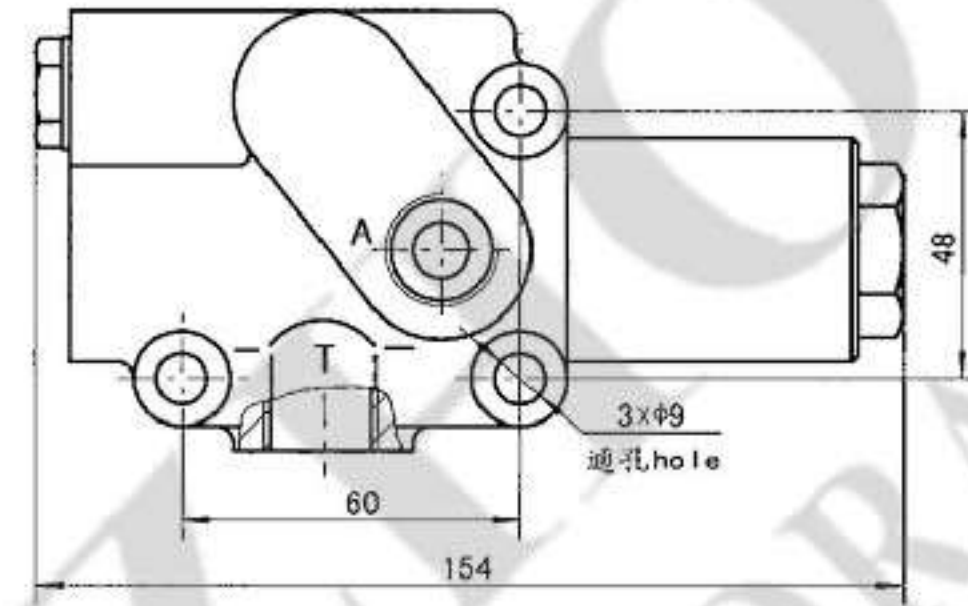


连接尺寸 Mounting Data

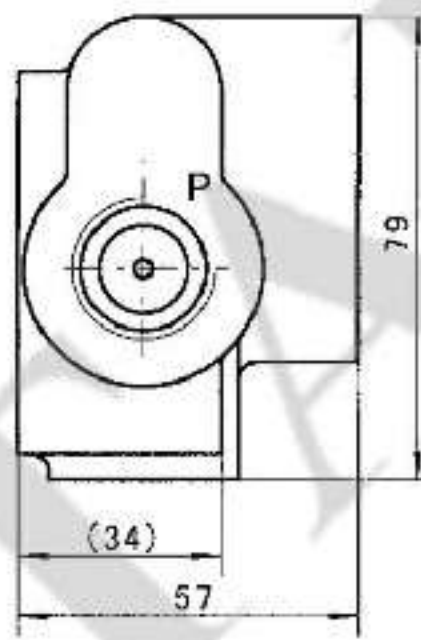
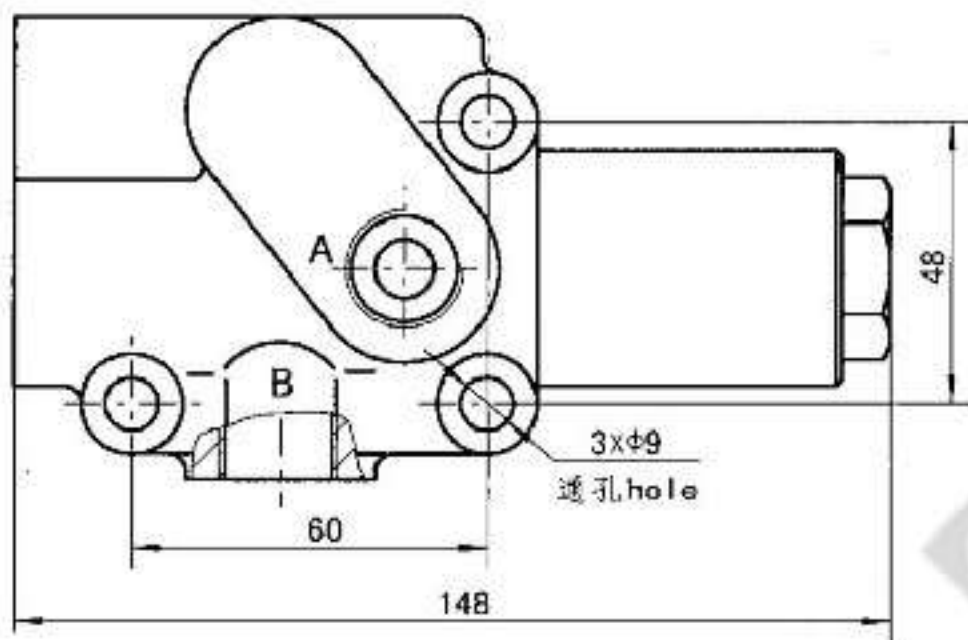
FLD-F4~15



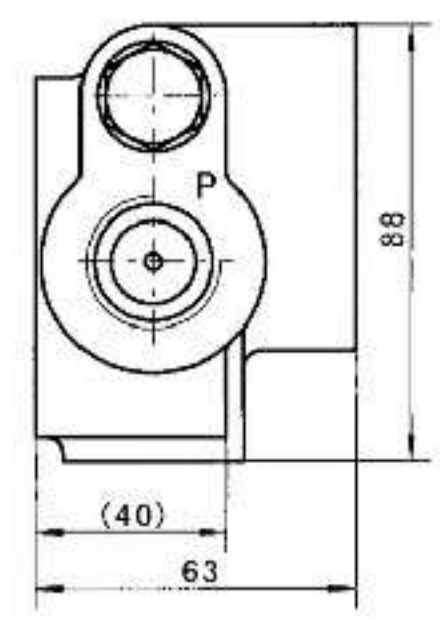
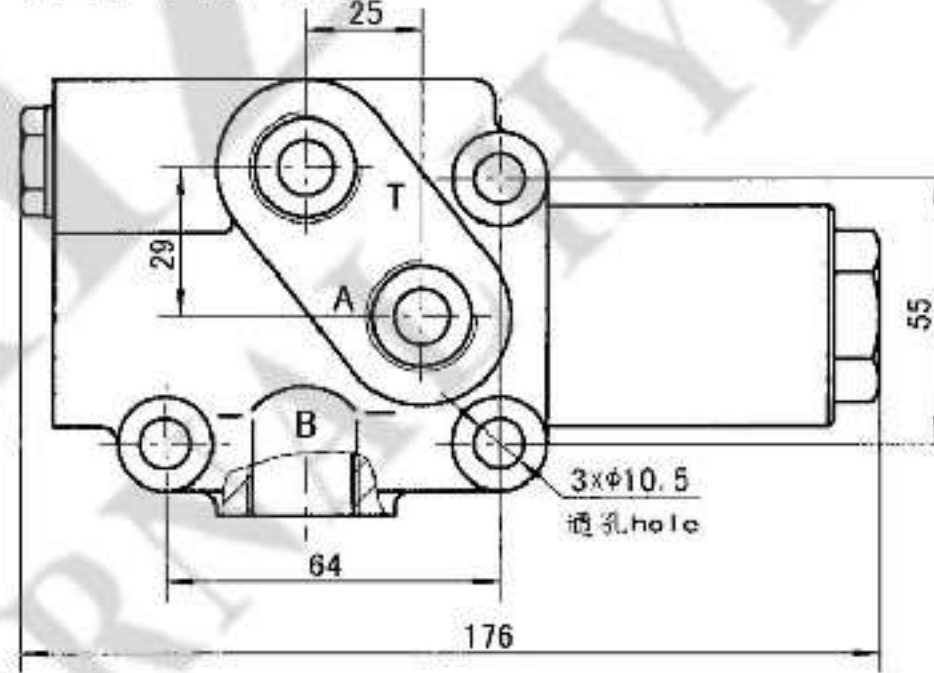
FLD-F4~15H



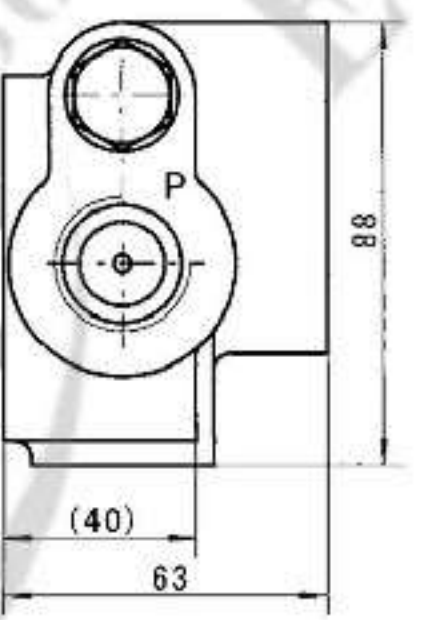
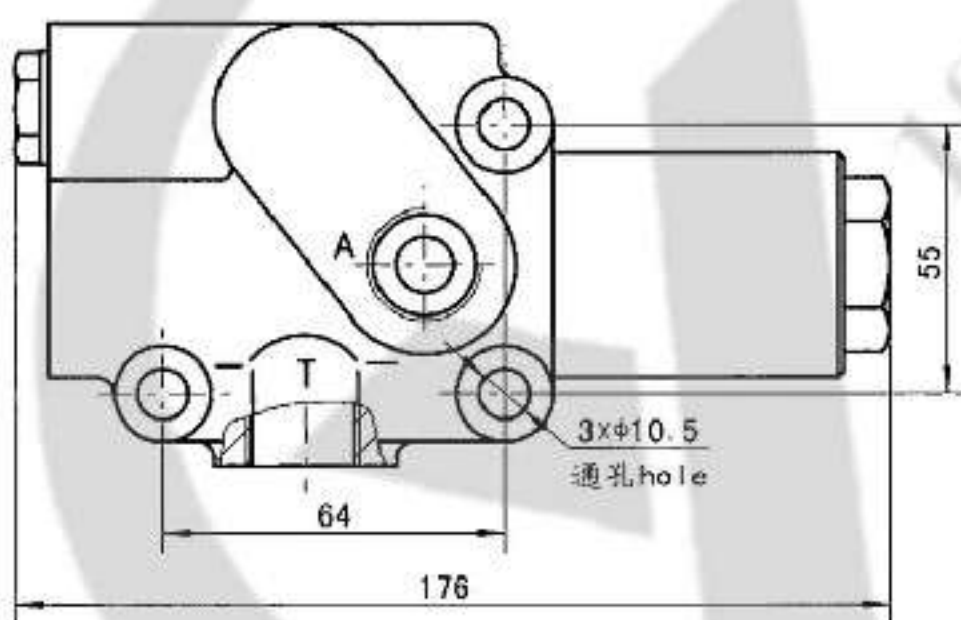
FLD-F4~15W



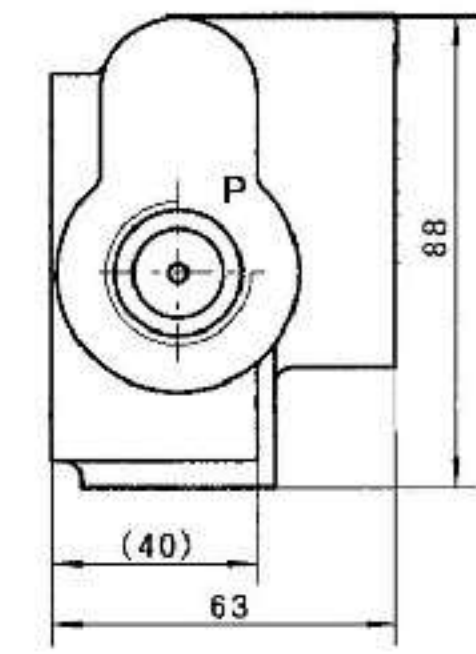
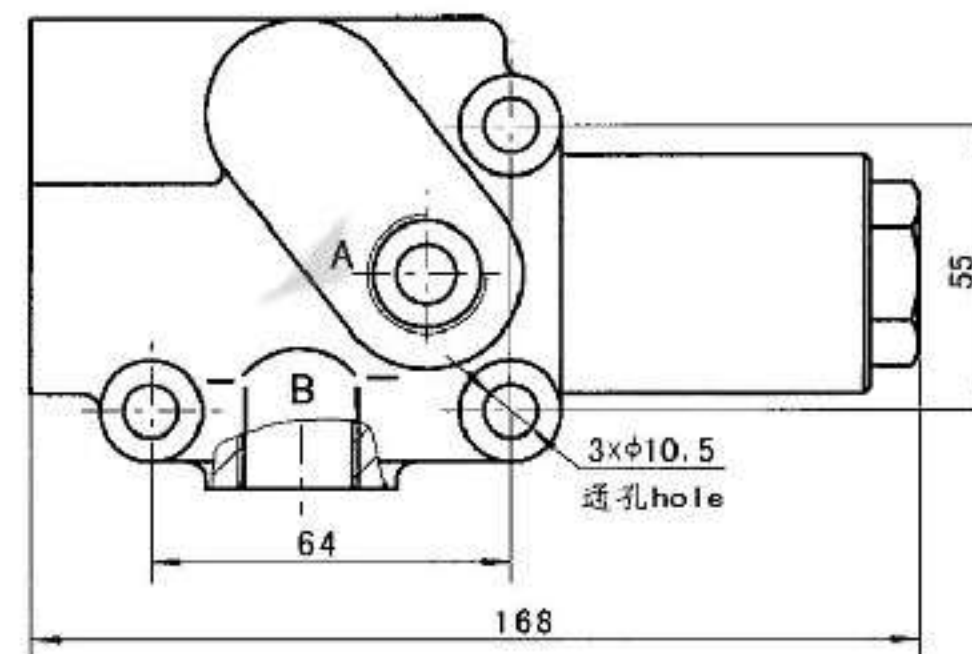
FLD-F19~30



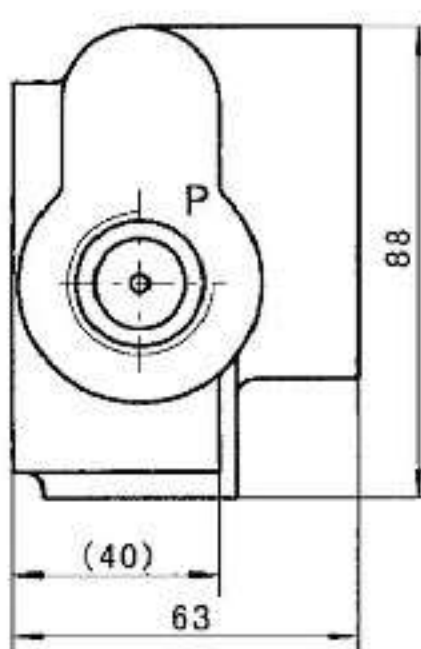
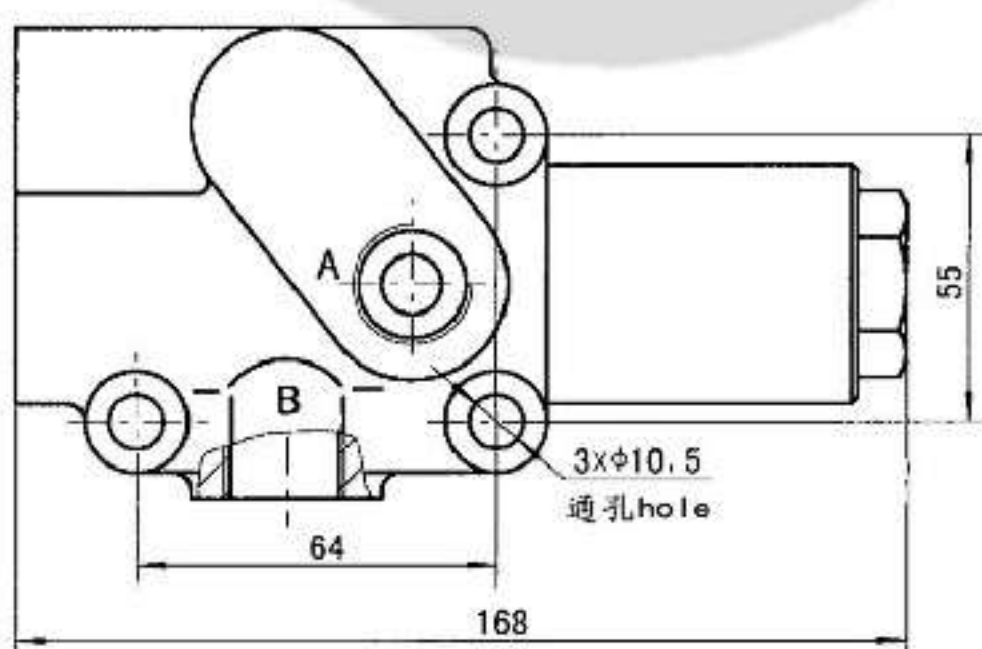
FLD-F19~30H



FLD-F19~30W

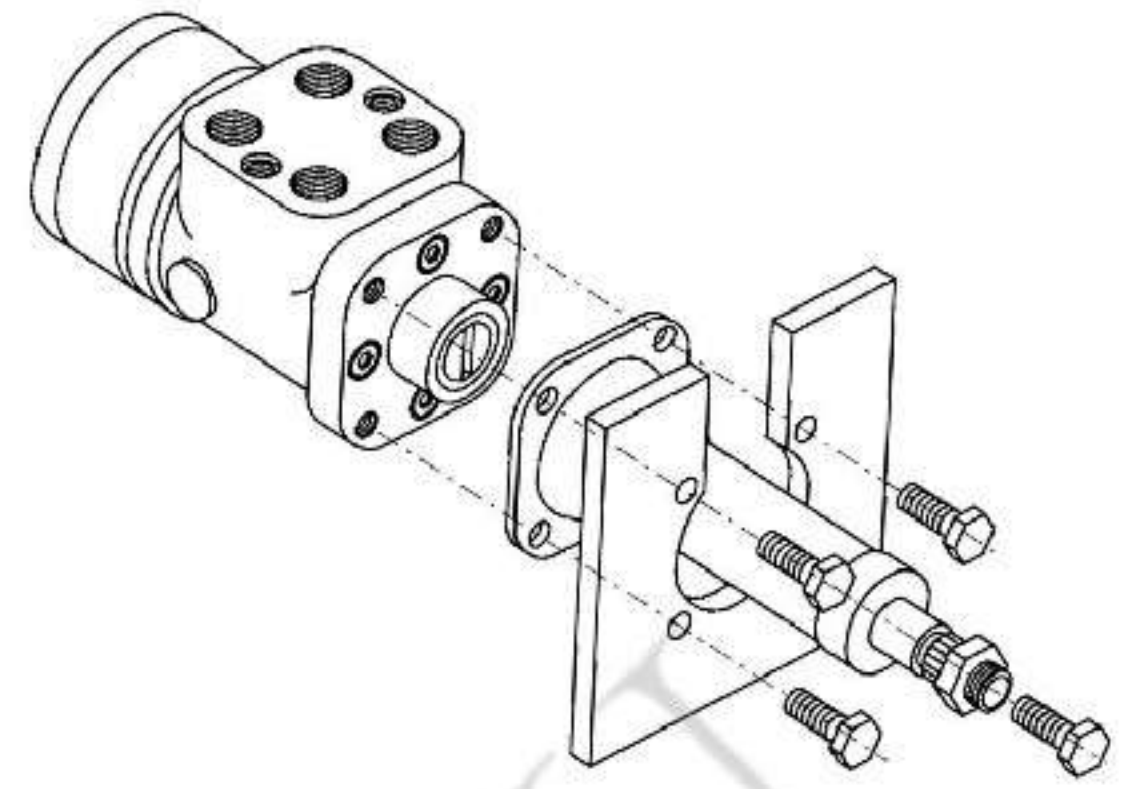


FLD-38~75W

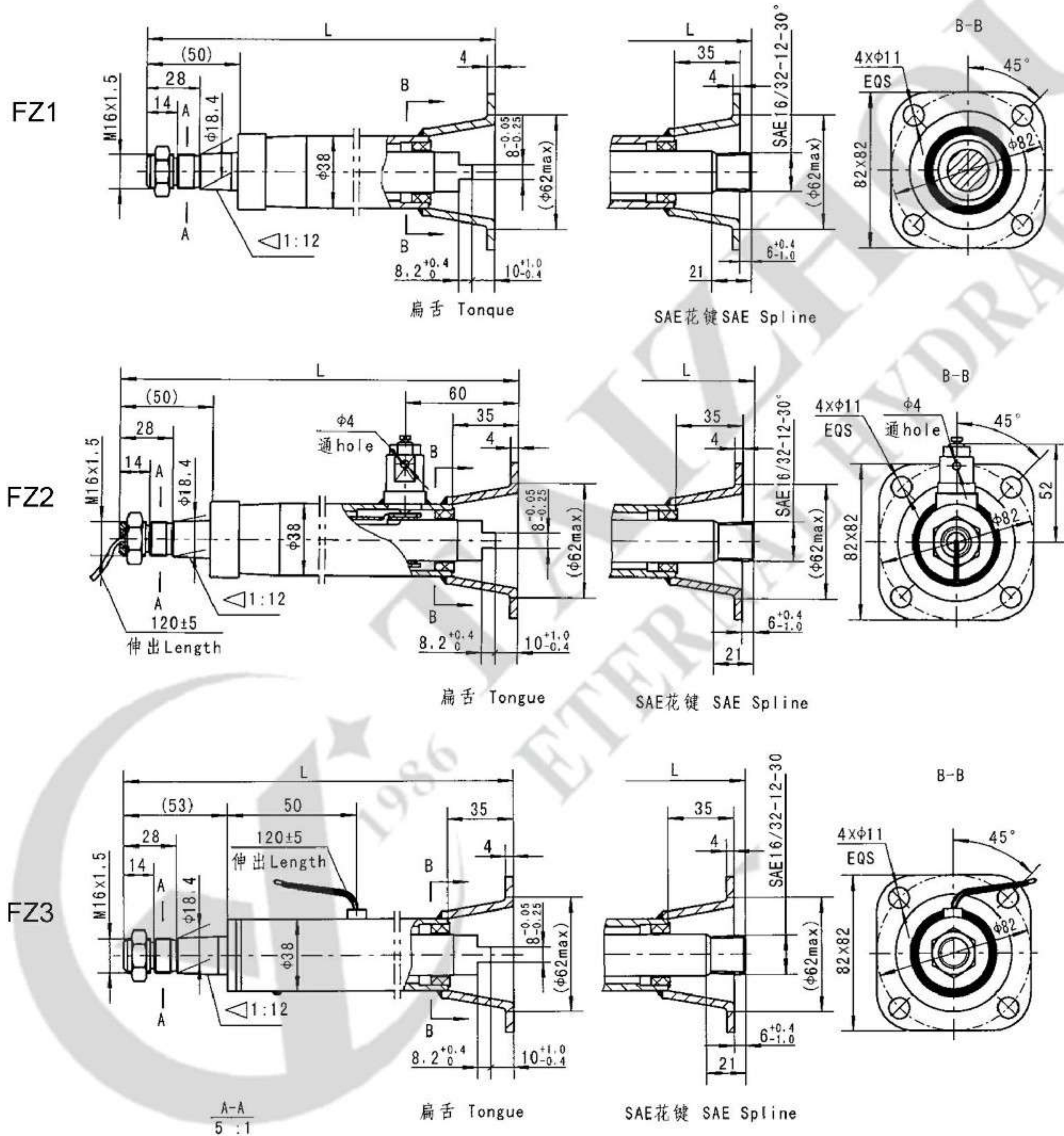


■ 推荐连接示意图 Recommendable Mounting Example

转向柱与转向器之间最好不加装其他零件
No other parts be mounted between steering unit and steering column



■ 连接尺寸 Mounting Data



注： 1、样图尺寸为我厂转向柱基本型式的尺寸；
2、如有特殊要求请与厂家联系；
3、如有改动，恕不通知。

Note: 1、 All above is provided from our factory.
2、 Please contact us if any require differs from this catalog offerings.
3、 Due to improvement of product, please forgive us if we change at any time without notice.