

### ■ 特点 Feature:

OMH马达是带有轴承支撑的轴配流马达。  
 双轴承支撑，可以承受更大的径向力。  
 采用镶齿式定转子副，气动压力低，效率高，保持性好。  
 可靠的轴密封设计，承受背压高，可以串并联使用

OMH Motor is one spool valve with double ball-bearing type moto,  
 Supported by double ball-bearing,the shaft can bear higher radial force.  
 Adope gerolor design, low starting pressure, high efficiency and good preformance  
 Shaft seal can bear high pressure of bace and the motor can be used in parallel or in series



### ■ 型号说明 Model Code

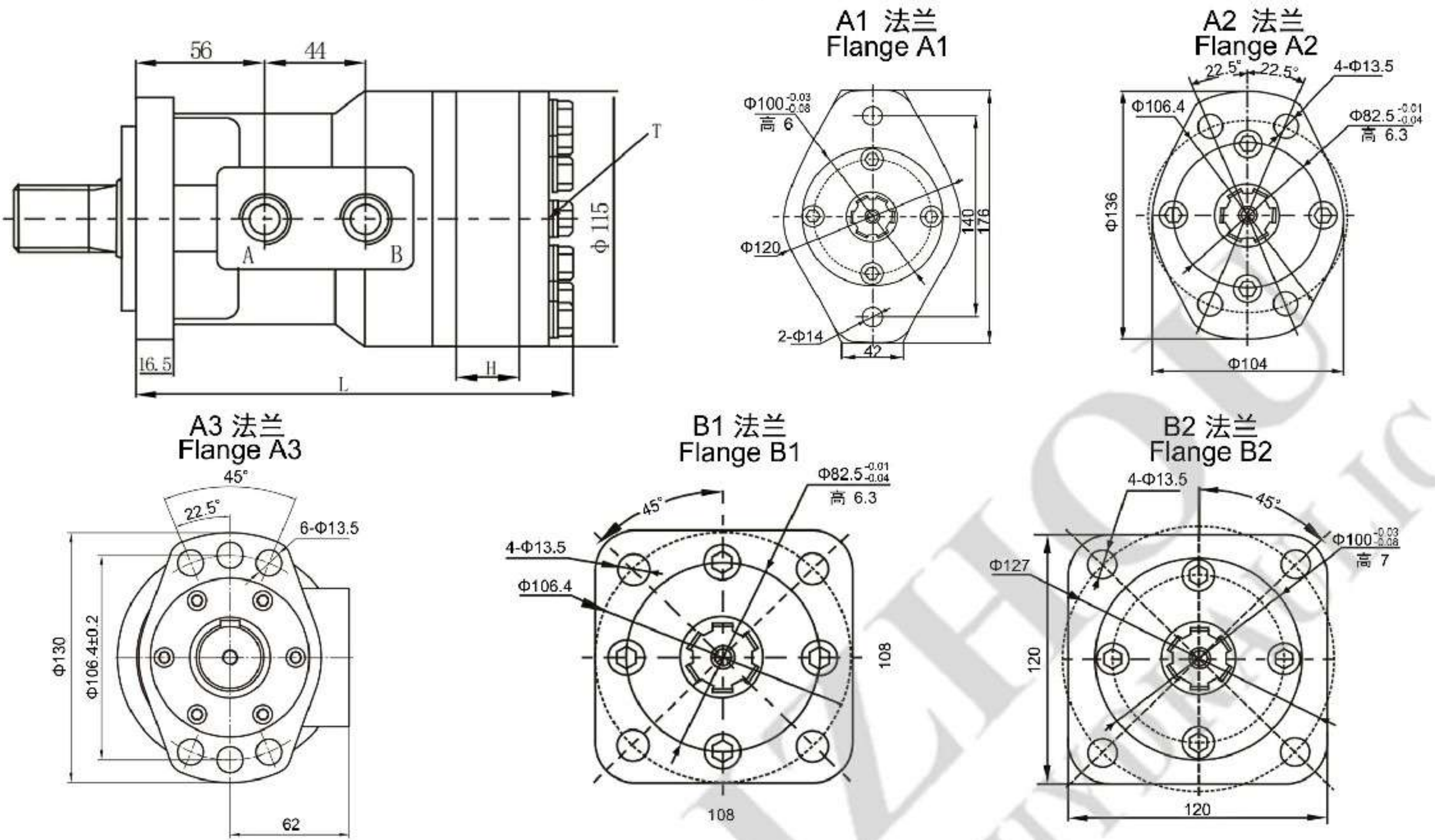
OMH	-400	B1	P1	Y
系列 Code	排量 Displacement	安装法兰及止口 Mounting Flange&Spigot	输出轴 Shaft	油口&泄油口 Inlet&Outlet and Drain Port
OMH	200,250,315,400,500	参照下图 See Below Drawing		

### ■ OMH技术参数 Technical Data

型号 TYPE	OMH-200	OMH-250	OMH-315	OMH-400	OMH-500
排量 Displacement(ml/r)	203	253.7	318.9	405.9	471.1
最大压降 Max.Pressure.Drop (Mpa)	连续 cont.	15.5	15.5	10.5	8.5
	间断 int.	17.5	17.5	12.5	10
	尖峰 peak.	20	20	15.5	13
最大扭矩 Max.torque (N.m)	连续 cont.	419	493	535	508
	间断 int.	473	557	636	598
	尖峰 peak.	541	636	789	778
最高转速 Max. Cont. Speed (r/min)	370	295	235	185	155
最大流量 Max.Flow(cont.)(L/min)	75	75	75	75	75
最大输出功率 Max.Output.Power(cont.)(Kw)	14	14	12.5	10	8.5
重量 Weight(kg)	10.5	11	11.5	12.5	13

间断工作时间每分钟不得超过6秒，尖峰工作时间每分钟不得超过0.6秒  
 Intermittent operation the permissible values may occur for max. 10% of every minute  
 Peak load: the permissible values may occur for max. 1% of every minute

## OMH马达连接尺寸&外形图 Dimension&Mounting



排量(ml/r) Displacement	200	250	315	400	500	600	800
H	21.7	27.3	34.5	43.4	54.4	69.1	89
L	184.7	190.3	197.5	206.4	217.4	232.1	252

马达标准旋向：  
面对输出轴轴端，A油口进油，马达顺时针旋转

Standard direction if the motor rotation  
CW-When a part pressurizde, Viewed from the shaft end

## OMH油口代号 Port Code

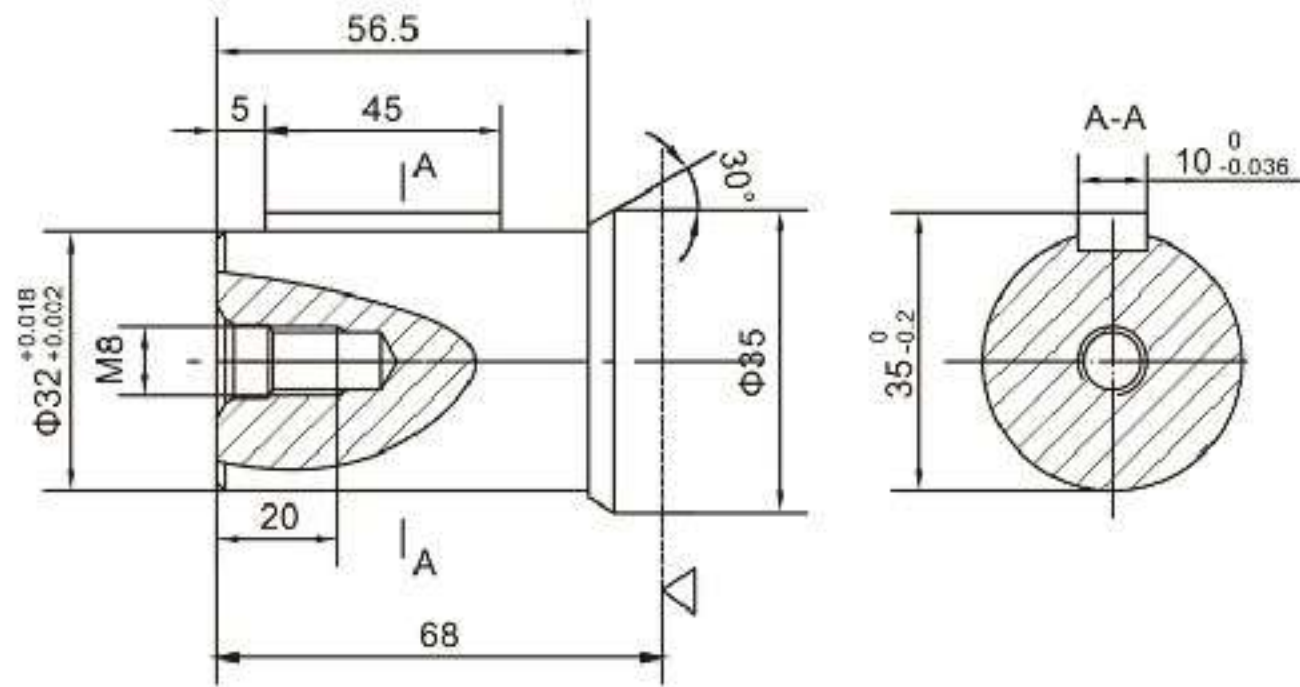
油口 Ports 代号 Code	P(A、B)(深deep)	C (深deep)	T (深deep)
Y	G1/2 (15)	M8 (13)	G1/4 (12)
Y5	7/8-14UNF (15)	3/8-16UNC (13)	7/16-20UNF (12)
Y8	NPT1/2 (15)	5/16-18UNC (13)	7/16-20UNF (12)
Y25	7/8-14UNF (15)	M8 (13)	7/16-20UNF (12)

注: P(A、B)--进出油口, C--油口面安装螺纹 (—表示没有此螺纹孔), T--泄油口

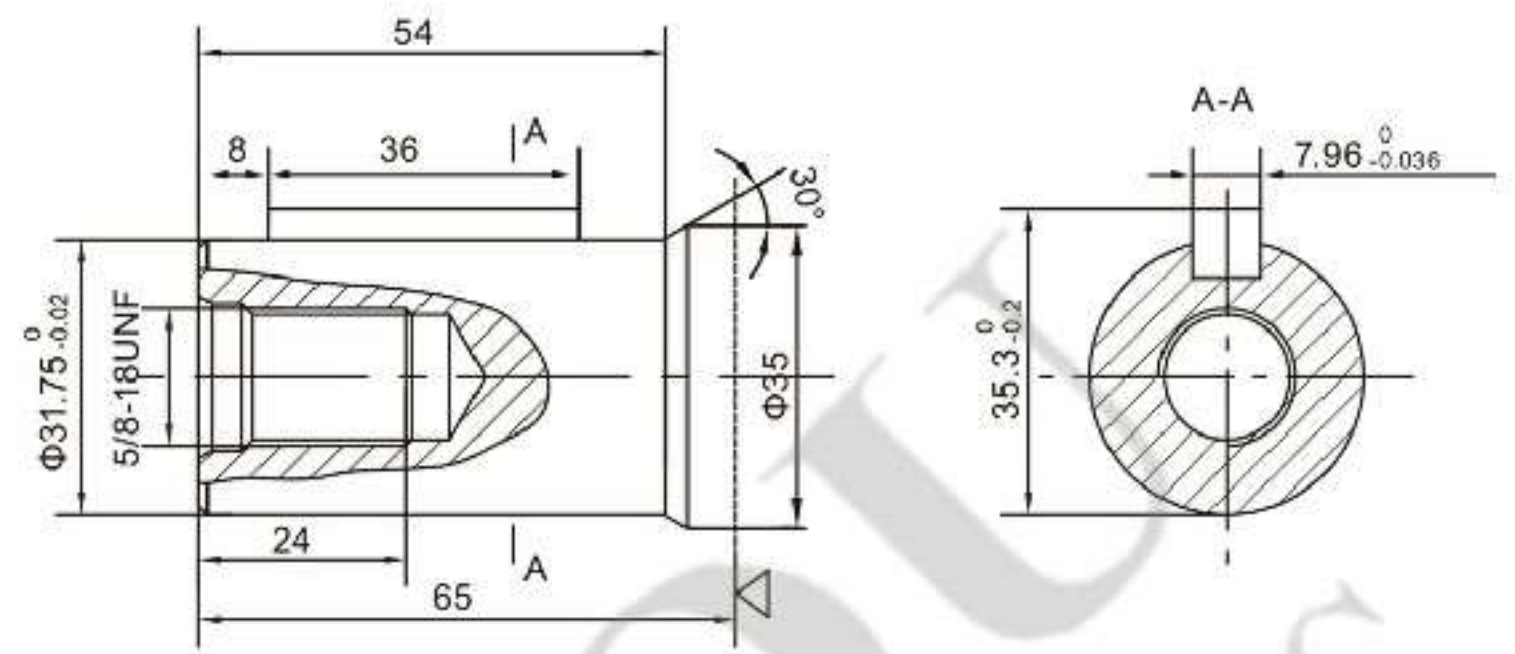
Note:P(A、B)--Ports, C--Mounting Thread (—Indicates no this thread), T--Drain connettion

■ OMH外形安装尺寸-输出轴 Shaft Version

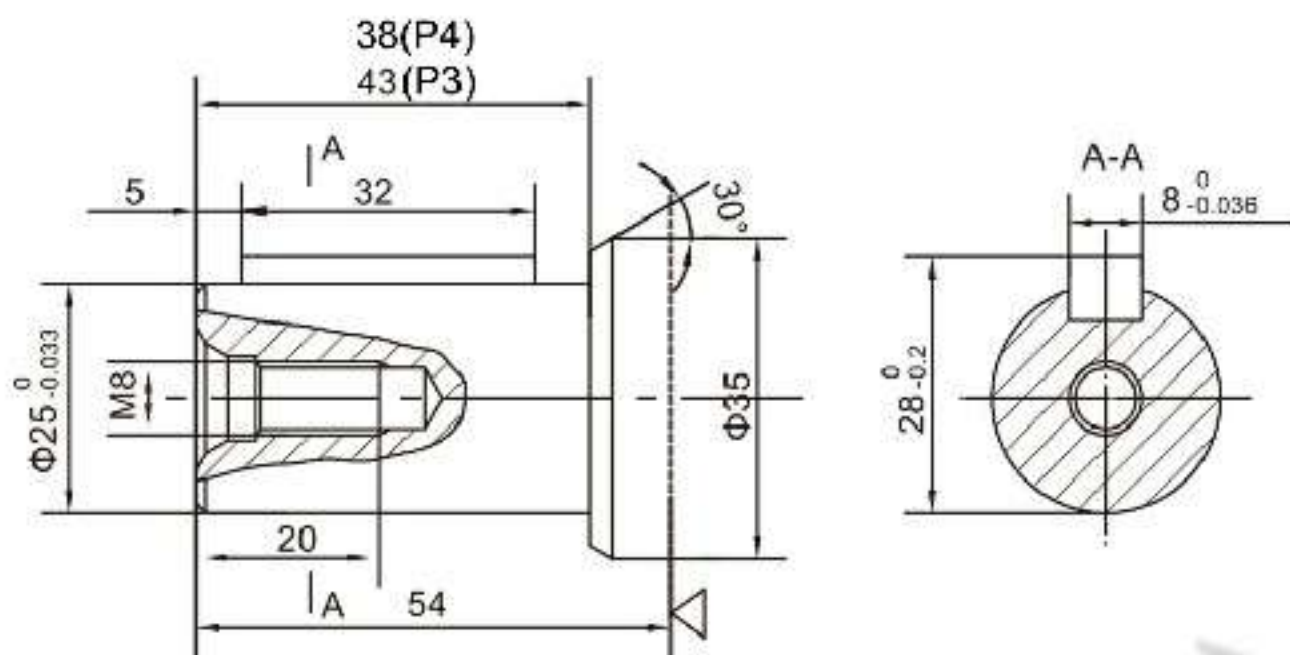
P1:  $\Phi 32$ 平键轴, 平键 $10 \times 8 \times 45$   
 $\Phi 32$ Cylindrical shaft, parallel key $10 \times 8 \times 45$



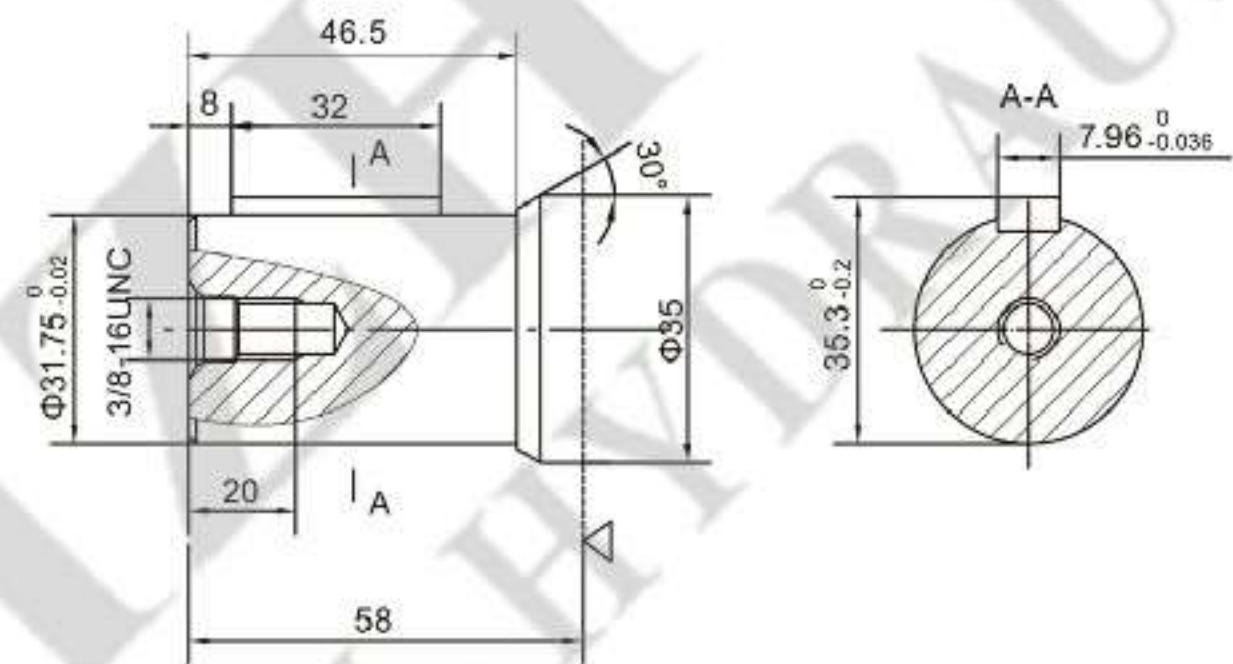
P2:  $\Phi 31.75$ 平键轴, 平键 $7.96 \times 7.96 \times 36$   
 $\Phi 31.75$ Cylindrical shaft, parallel key $7.96 \times 7.96 \times 36$



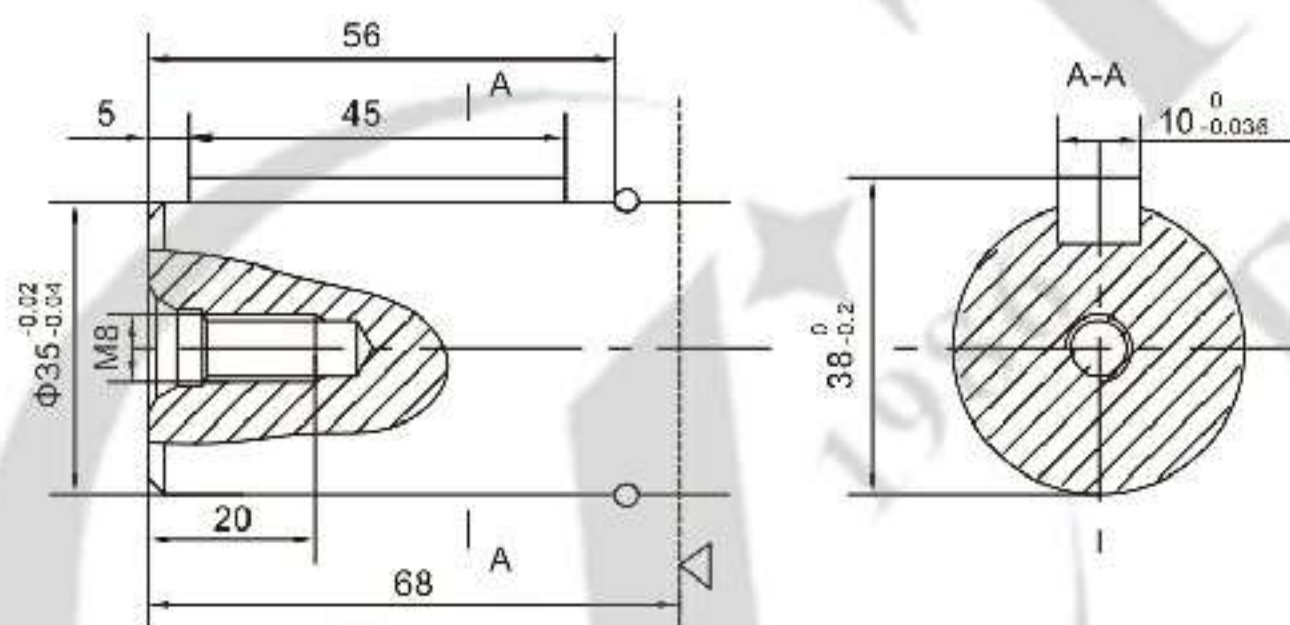
P3&P4:  $\Phi 25$ 平键轴, 平键 $8 \times 7 \times 32$   
 $\Phi 25$ Cylindrical shaft, parallel key $8 \times 7 \times 32$



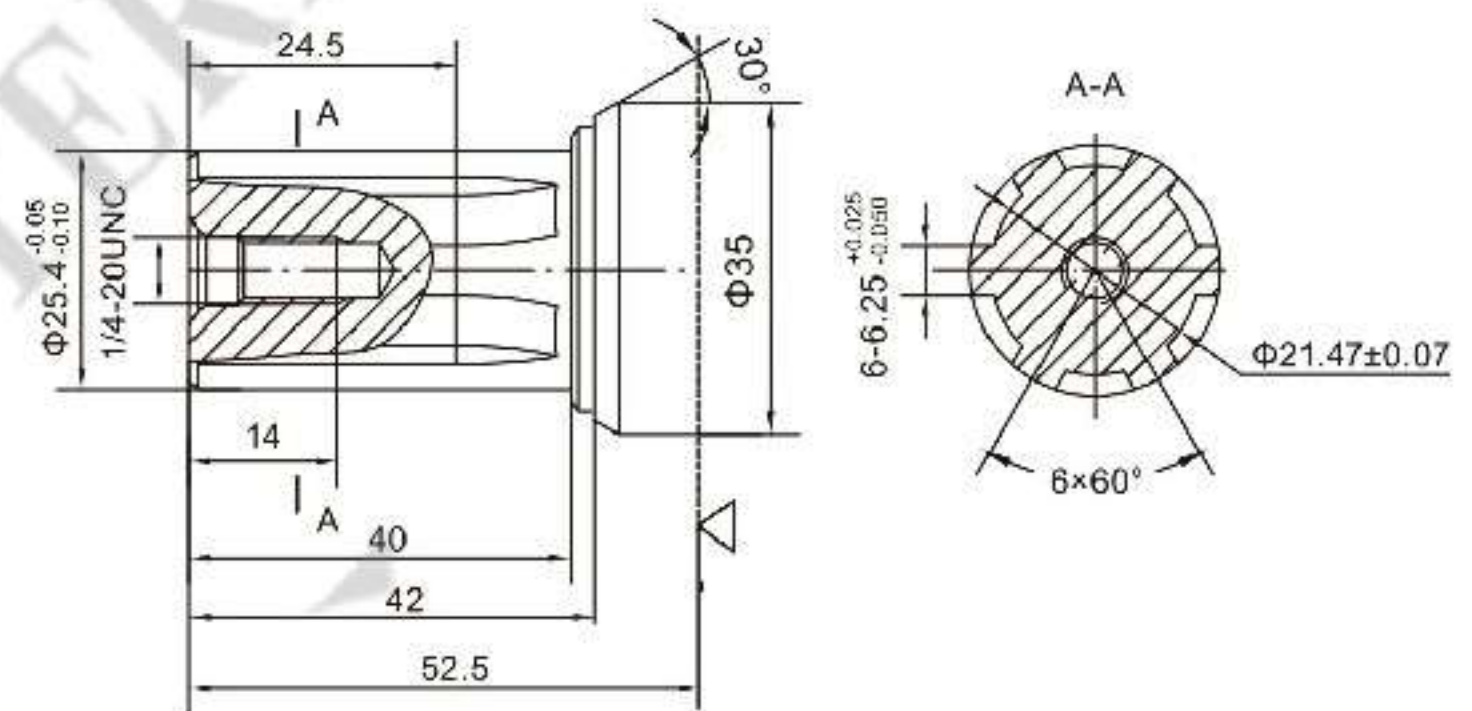
P5:  $\Phi 31.75$ 平键轴, 平键 $7.96 \times 7.96 \times 32$   
 $\Phi 31.75$  Cylindrical shaft, parallel key $7.96 \times 7.96 \times 32$



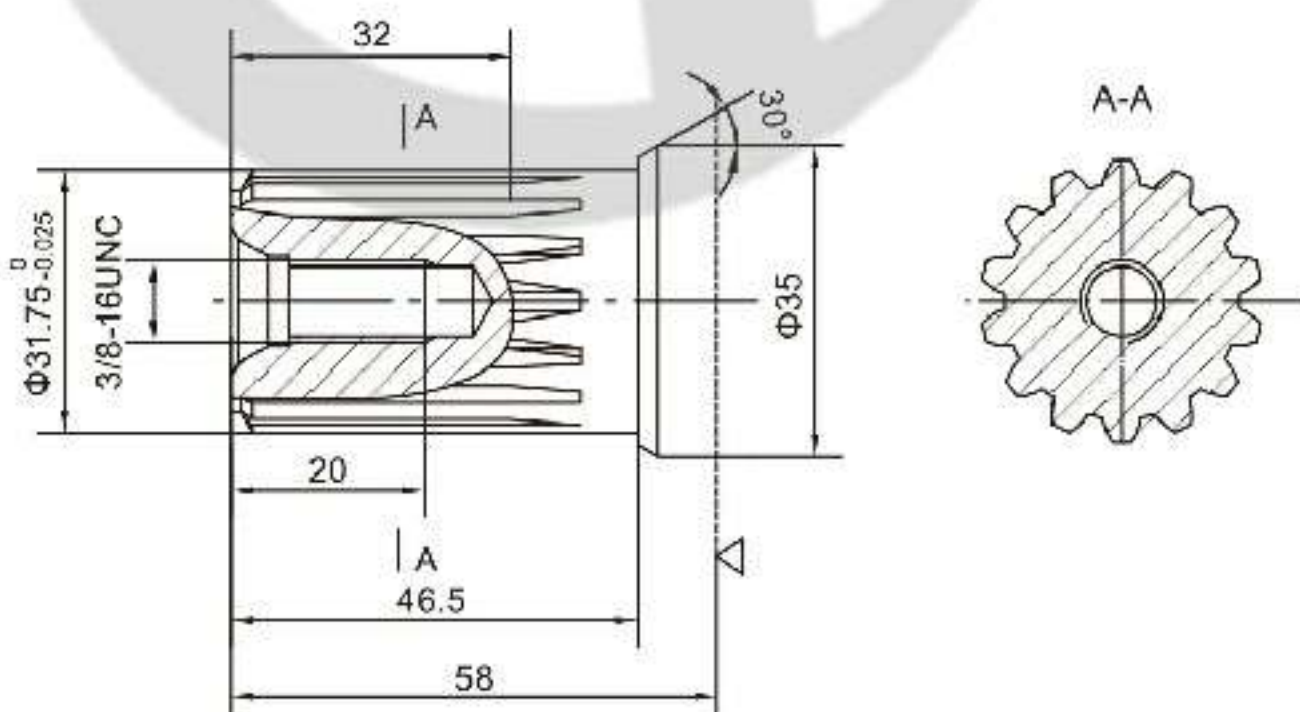
P6:  $\Phi 35$ 平键轴, 平键 $10 \times 8 \times 45$   
 $\Phi 35$ Cylindrical shaft, parallel key $10 \times 8 \times 45$



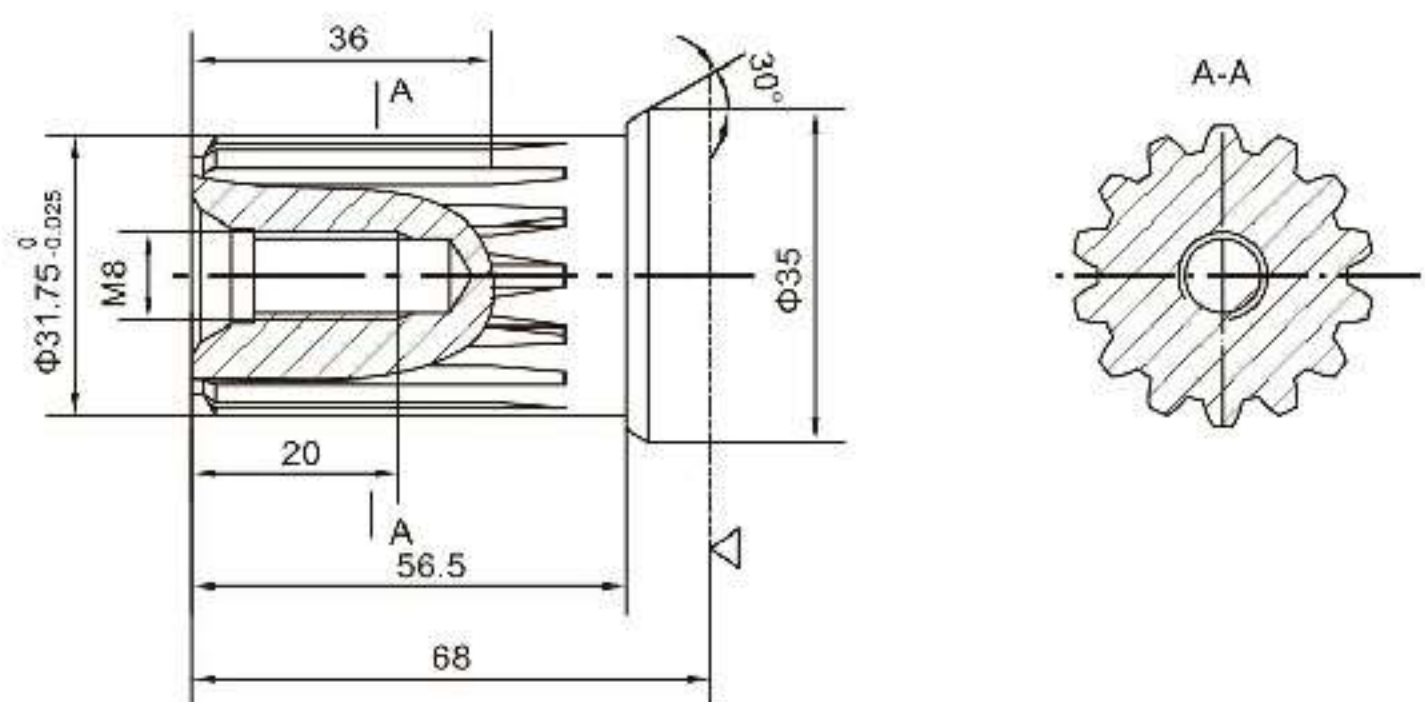
H3:  $\Phi 25.4$ 矩形花键轴,  $6-25.4 \times 21.47 \times 6.25$   
 $\Phi 25.4$  Splined shaft,  $6-25.4 \times 21.47 \times 6.25$



K1:  $\Phi 31.75$ 渐开线花键轴 14-DP12/24  $a=30^\circ$   
 $\Phi 31.75$  involute splined shaft 14-DP12/24  $a=30^\circ$



K2:  $\Phi 31.75$ 渐开线花键轴 14-DP12/24  $a=30^\circ$   
 $\Phi 31.75$  involute splined shaft 14-DP12/24  $a=30^\circ$



△ : 马达安装面  
Motor mounting surface

OMP1	-400	B1	P	G
系列 Code	排量 Displacement	安装法兰及止口 Mounting Flange & Spigot	输出轴 Shaft	油口 & 泄油口 Inlet & Outlet and Drain Port
OMP1	50, 80, 100, 125, 160, 200, 250, 315, 400	B1: 4-φ11 方法兰 Square Flange, 止口 Spigot φ80x5 B2: 4-φ11 方法兰 Square Flange, 止口 Spigot φ82.5x5	P: φ25(40), key8x7x28 L: φ25(40), 6-25x21x5 花键 Spline M: φ25(40), 6-25x21x6 花键 Spline	M1: M18x1.5, M10x1 M2: M20x1.5, M10x1 M3: M22x1.5, M10x1 G: G1/2, G1/4
OM1		B1: 4-φ11 方法兰 Square Flange, 止口 Spigot φ80x6 B2: 4-φ11 方法兰 Square Flange, 止口 Spigot φ82.5x6		
OMRL		2: 2-φ13.5 菱形法兰 Diamond Flange, 止口 Spigot φ82.5x6		
OYM		Z3: 4-φ11 长方形法兰 Rectangle Flange, 止口 Spigot φ80x5 Z5: 4-φ11 长方形法兰 Rectangle Flange, 止口 Spigot φ85x5		
OM2/3/4	-400	2	A	M3
系列 Code	排量 Displacement	安装法兰及止口 Mounting Flange & Spigot	输出轴 Shaft	油口 & 泄油口 Inlet & Outlet and Drain Port
OM2	80, 100, 125, 160, 200, 250, 315, 400	2: 4-φ13 方法兰 Square Flange, 止口 Spigot φ100x6	A: φ25(43), key8x7x32 P: φ30(43), key10x8x40 N: φ30(43), 6-30x26x6 花键 Spline J: φ30(43), 6-30x26x8 花键 Spline P1: φ30(37), key8x7x28	M3: M22x1.5, M10x1
OM3	500, 630	3: 4-φ13 方法兰 Square Flange, 止口 Spigot φ125x6	N: φ42轴, 8-42x36x7 花键 Spline	
OM4	160, 200, 250, 315, 400, 500, 630	2: 4-φ13 方法兰 Square Flange, 止口 Spigot φ100x6	P: φ30(46), key10x8x40 N: φ30(46), 6-30x26x6 花键 Spline J: φ30(46), 6-30x26x8 花键 Spline P1: φ30(37.5), key8x7x28 B: φ30(56), key10x8x45 B1: φ30(46), key10x8x32	
OMER2	475	M	S	G2
系列 Code	排量 Displacement	安装法兰及止口 Mounting Flange & Spigot	油口 Inlet & Outlet Port	输出轴 Shaft
OMER2	160, 200, 250, 315, 400, 500, 630, 800, 985	M: 4-φ13.5 腰型法兰 Magneto Flange, 止口 Spigot φ82.55x2.8 F: 6-φ13.5 腰型法兰 Magneto Flange, 止口 Spigot φ82.55x2.8 W: 4-φ13.5 车轮法兰 Wheel Flange, 止口 Spigot φ82.55x2.5	S: 7/8-14 O-ring P: 1/2-14NPTF D: G1/2 H: 1/2 法兰油口 Flange Port	G2: φ31.75, key7.96x36.5 B1: φ32, key10x45 FD1: φ31.75, 14-DP12/24 T4: φ31.75 锥轴 Taper, key7.96x25.4 RW: φ25.4, key6.35x31.75 AW: φ25, key 8x32 SW: φ25.4, SAE 6B