

OMM型号说明 Model Code

OMM系列马达壳体采用足够强度的球墨铸铁铸造而成，适用于负载较小且间隙工作的场合，广泛应用于农业林业、塑料、机床、矿业机械等。

OMM Series motor with its shell made of ductile cast iron of adequate intensity, can be applied to situations with less and interval operation, widely to agriculture, forestry, plastic machine tools and minmachines etc.

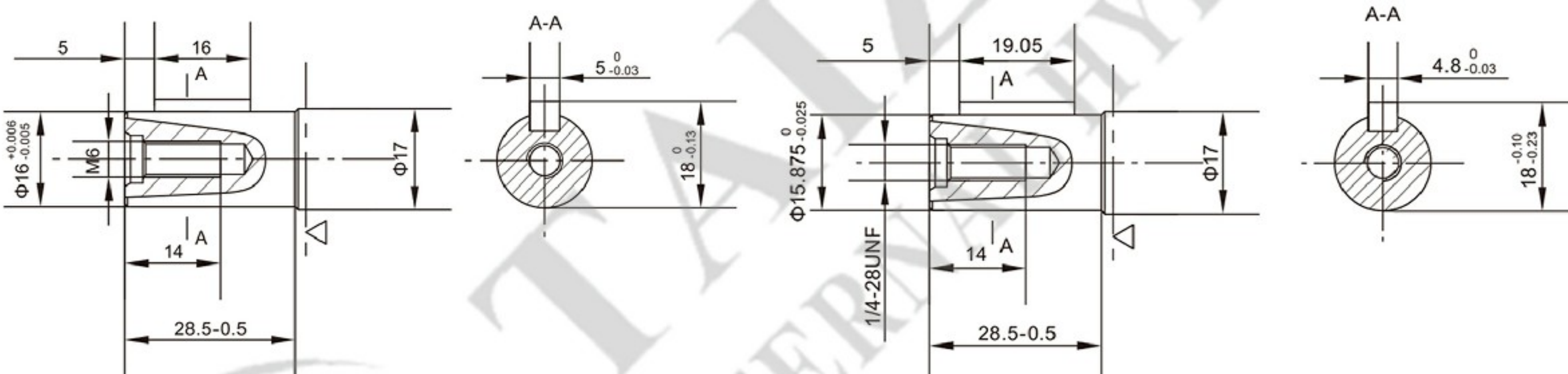


OMM	-40	M	A	E			
系列 Code	排量 Displacement	安装法兰及止口 Mounting Flange & Spigot	输出轴 Shaft	油口 & 泄油口 Inlet & Outlet and Drain Port			
OMM	8, 12.5, 20, 32, 40, 50	M: 3-M6 圆法兰 Round Flange, 止口 Spigot $\phi 31.5 \times 5$ U: 3-1/4-28UNF 圆法兰 Round Flange, 止口 Spigot $\phi 31.5 \times 5$ F: 2- $\phi 9$ 菱形法兰 Diamond Flange, 止口 Spigot $\phi 63 \times 2$ S: 特殊 Special	A: $\phi 16$, key 5x5x16 B: $\phi 15.875$, key 4.8x4.8x19.05 C: $\phi 16.5$ 花键 Spline Shaft, B17x14, DIN5482 S: 特殊轴 Special Shaft	E: 侧油口 Side Port G3/8, G1/8 U: 侧油口 Side Port 9/16-18UNF, 3/8-24UNF 1E: 后油口 Rear Port G3/8, G1/8 1U: 后油口 Rear Port 9/16-18UNF, 3/8-24UNF			
型号 Model		OMM-8	OMM-12.5	OMM-20	OMM-32	OMM-40	OMM-50
重量 Weight(KG)		1.9	2	2.1	2.2	2.3	2.4

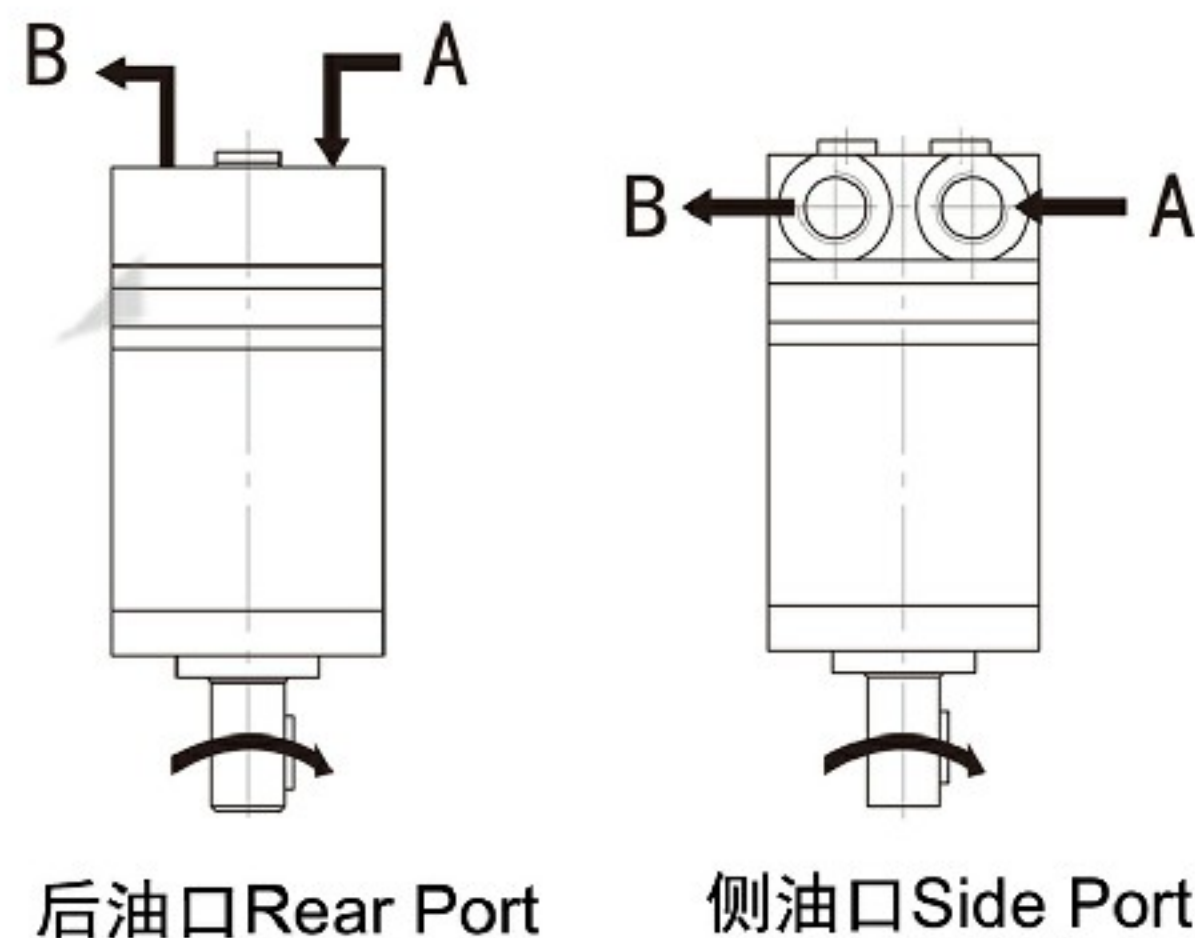
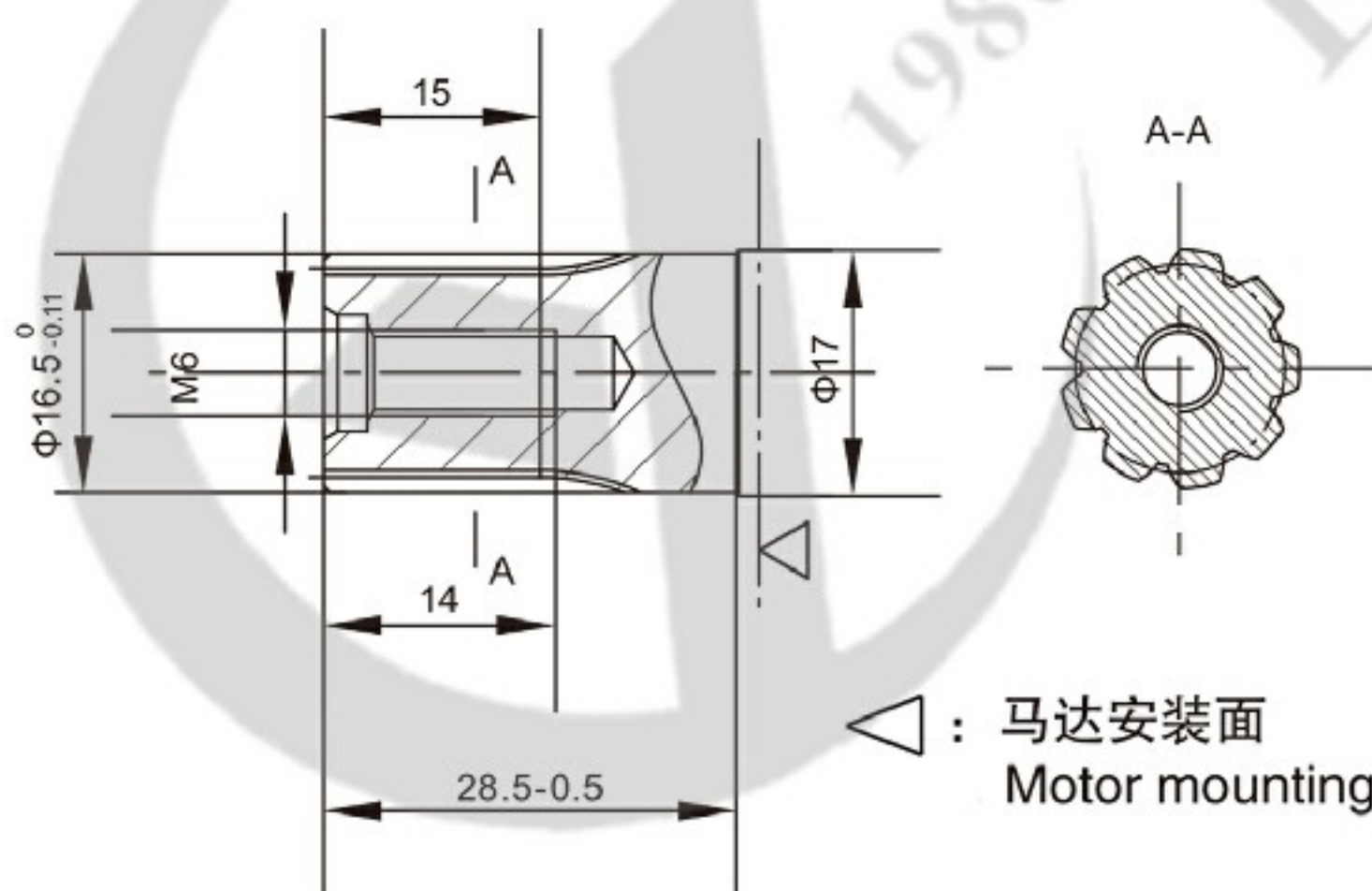
OMM 外形安装尺寸-输出轴 Shaft Version

A: $\phi 16$ 平键轴, 平键 $5 \times 5 \times 16$
 $\phi 16$ Straight Shaft Key 5X5X16

B: $\phi 15.875$ 平键轴, 平键 $4.8 \times 4.8 \times 19.05$
 $\phi 15.875$ Straight Shaft Key 4.8x4.8x19.05



C: $\phi 16.5$ 渐开线花键轴 B17 \times 14 DIN5482
 $\phi 16.5$ involute splined shaft B17 \times 14 DIN5482



OMM输出轴旋向: 标准

OMM Direction of Shaft Rotation: Standard

面向马达输出轴方向:

当“A”口进油时, 马达顺时针方向旋转;

当“B”口进油时, 马达逆时针方向旋转。

When facing shaft end of motor, shaft to rotate:

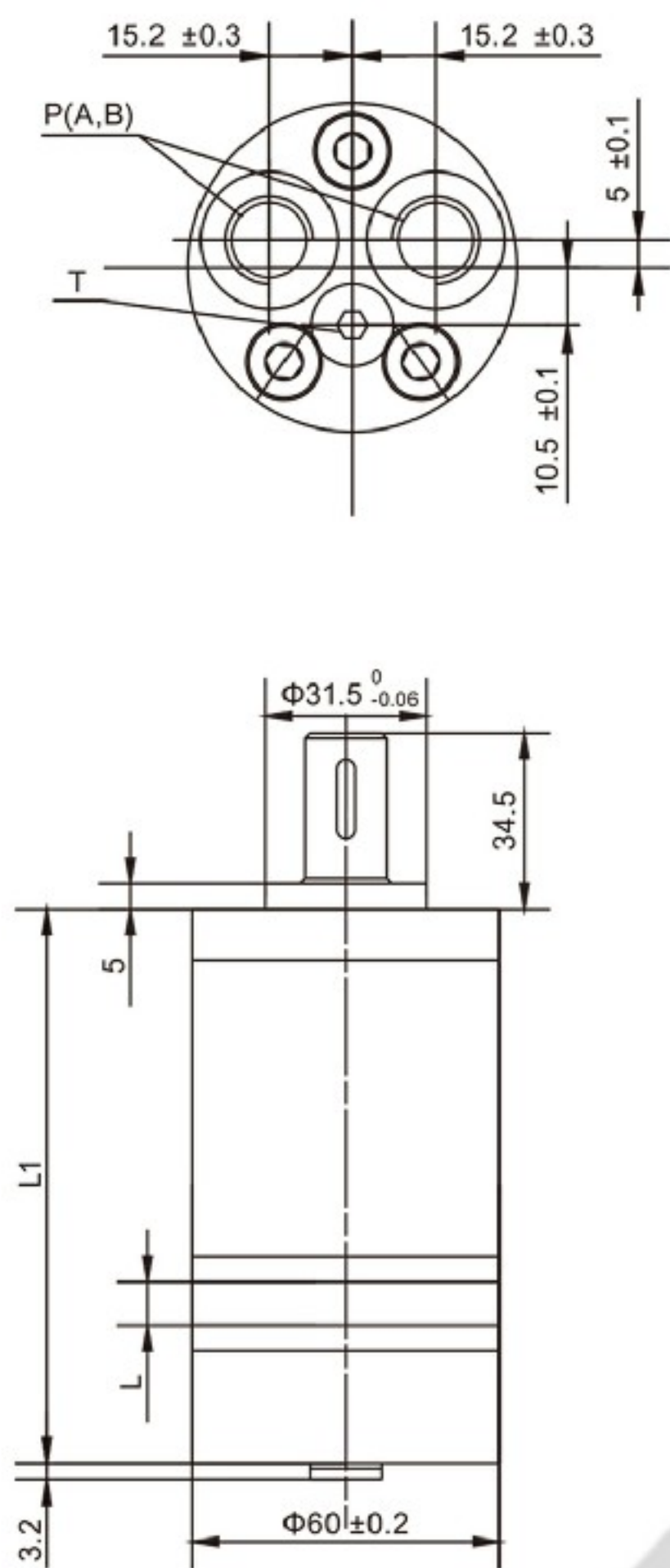
Clockwise when port “A” is pressurized;

Counter-clockwise when port “B” is pressurized.

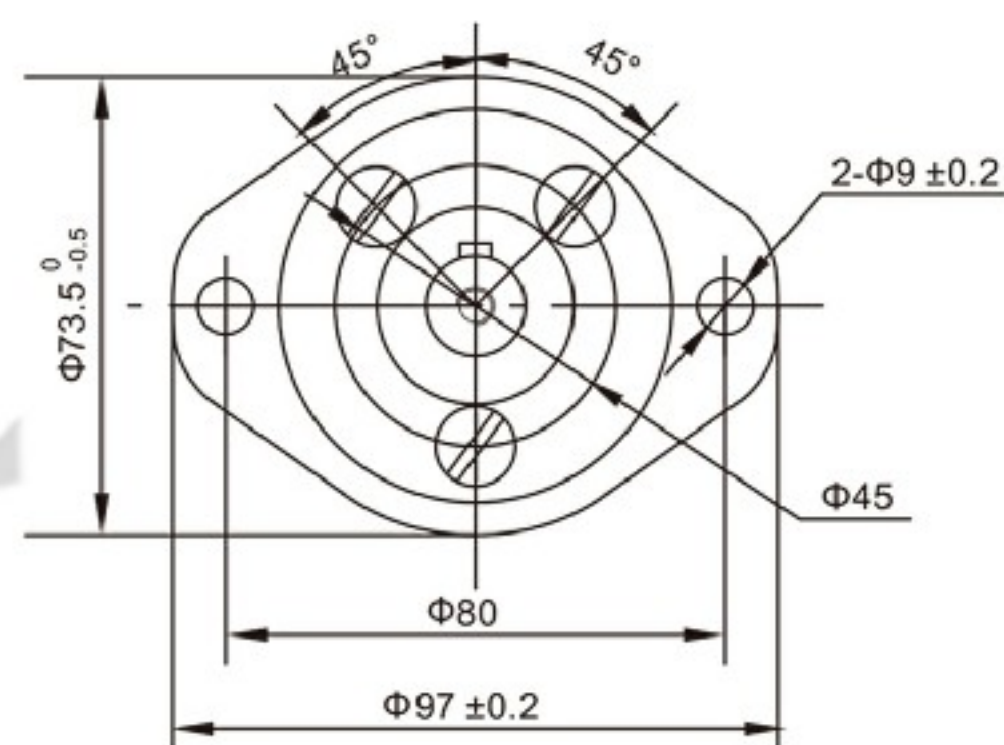
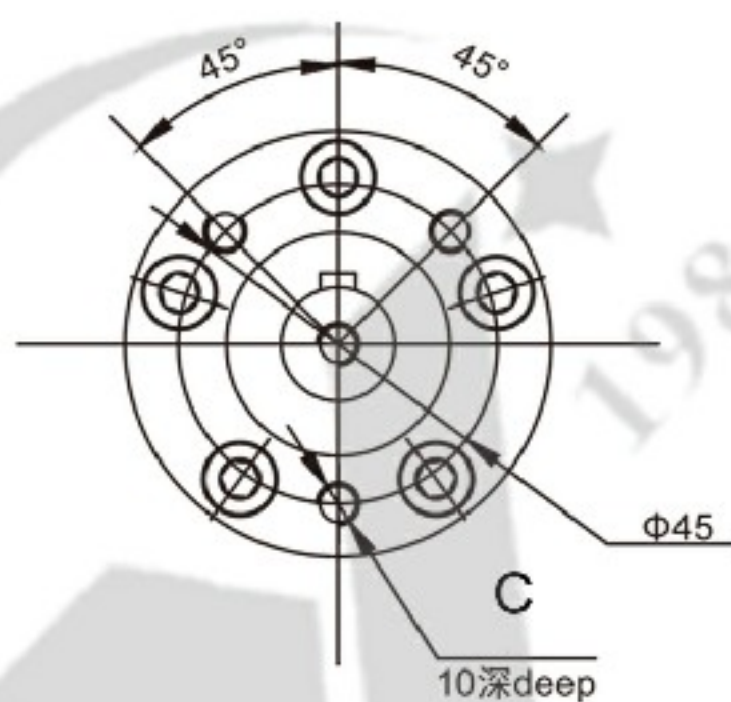
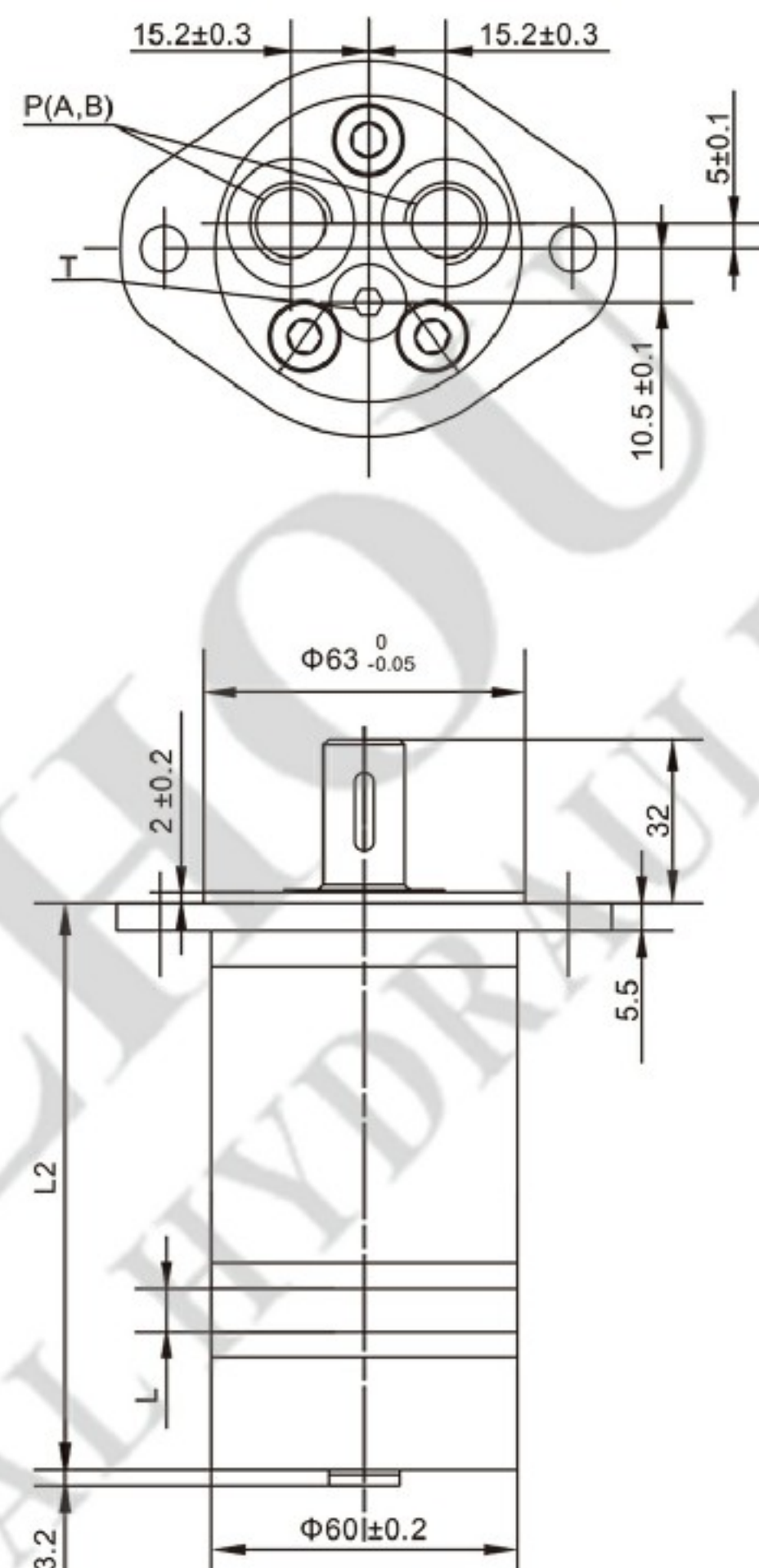
■ OMM外形安装图 Installation

1E&1U后油口 (Rear Port)

M&U型法兰 Flange M&U



F型法兰 2-Hole Oval Flange F



连接尺寸 Connection Size	代号Code	
	M	U
C	3-M6	3-1/4-28UNF

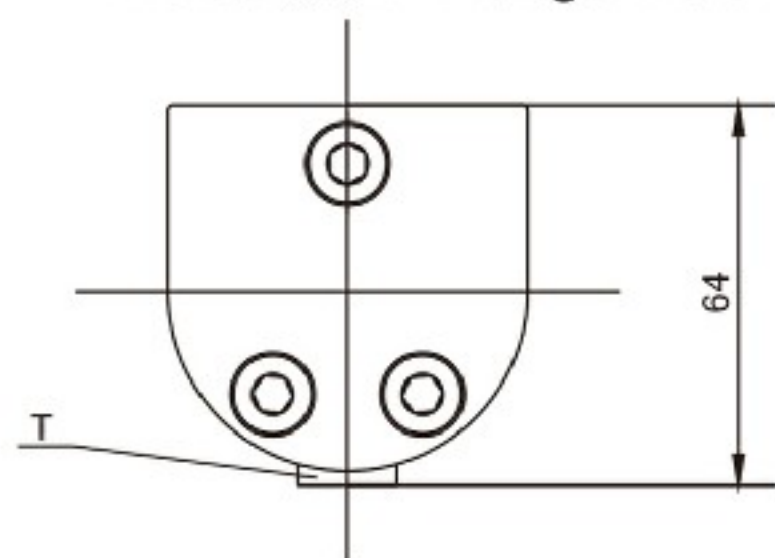
连接尺寸 Connection Size	代号Code			
	1E	1U	E	U
P	G3/8(12)	9/16-18UNF(12)	G3/8(12)	9/16-18UNF(12)
T	G1/8(8)	3/8-24UNF(8)	G1/8(8)	3/8-24UNF(8)

型号Type	OMM-8	OMM-12.5	OMM-20	OMM-32	OMM-40	OMM-50
L	3.5	5.5	8.5	13.5	17	21.5
L1	104	106	109	114	117.5	122
L2	107.5	109.5	112.5	117.5	121	125.5

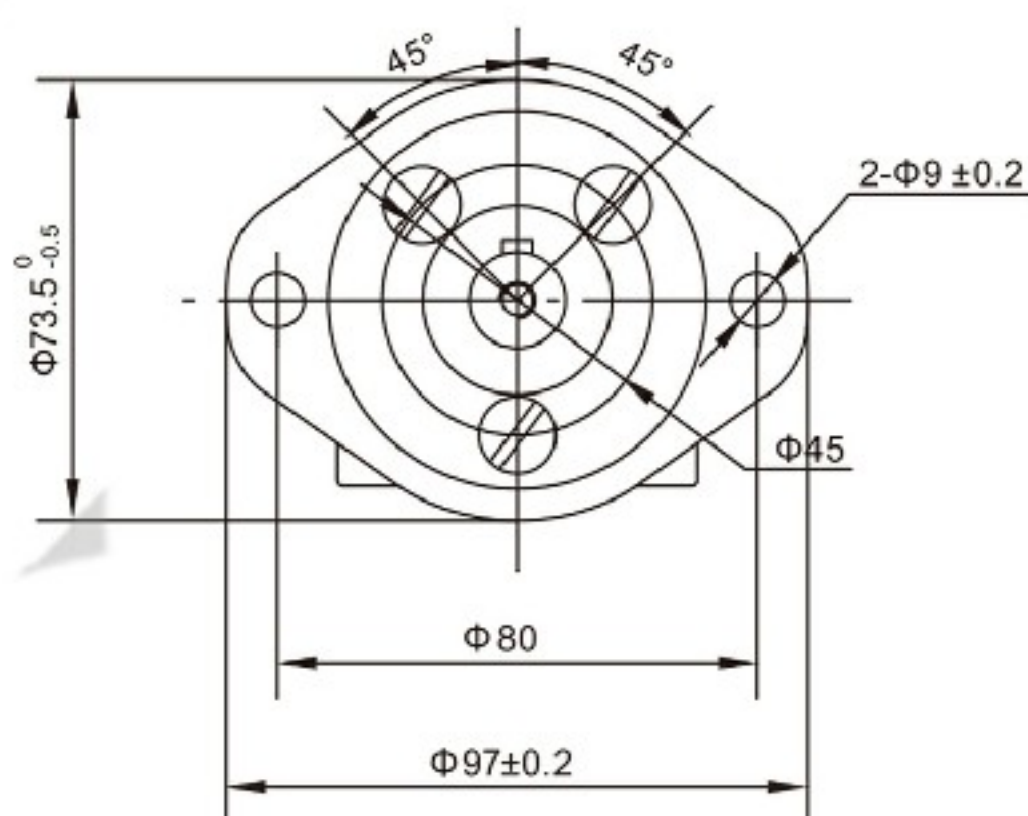
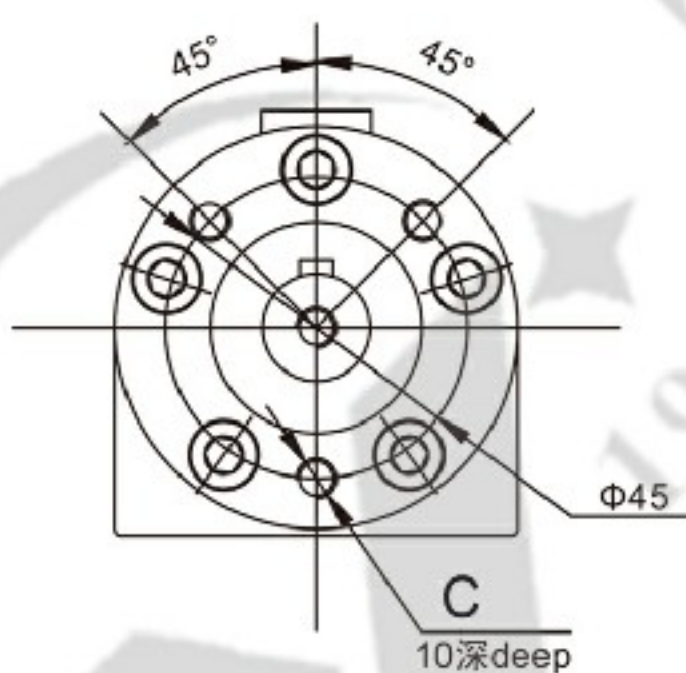
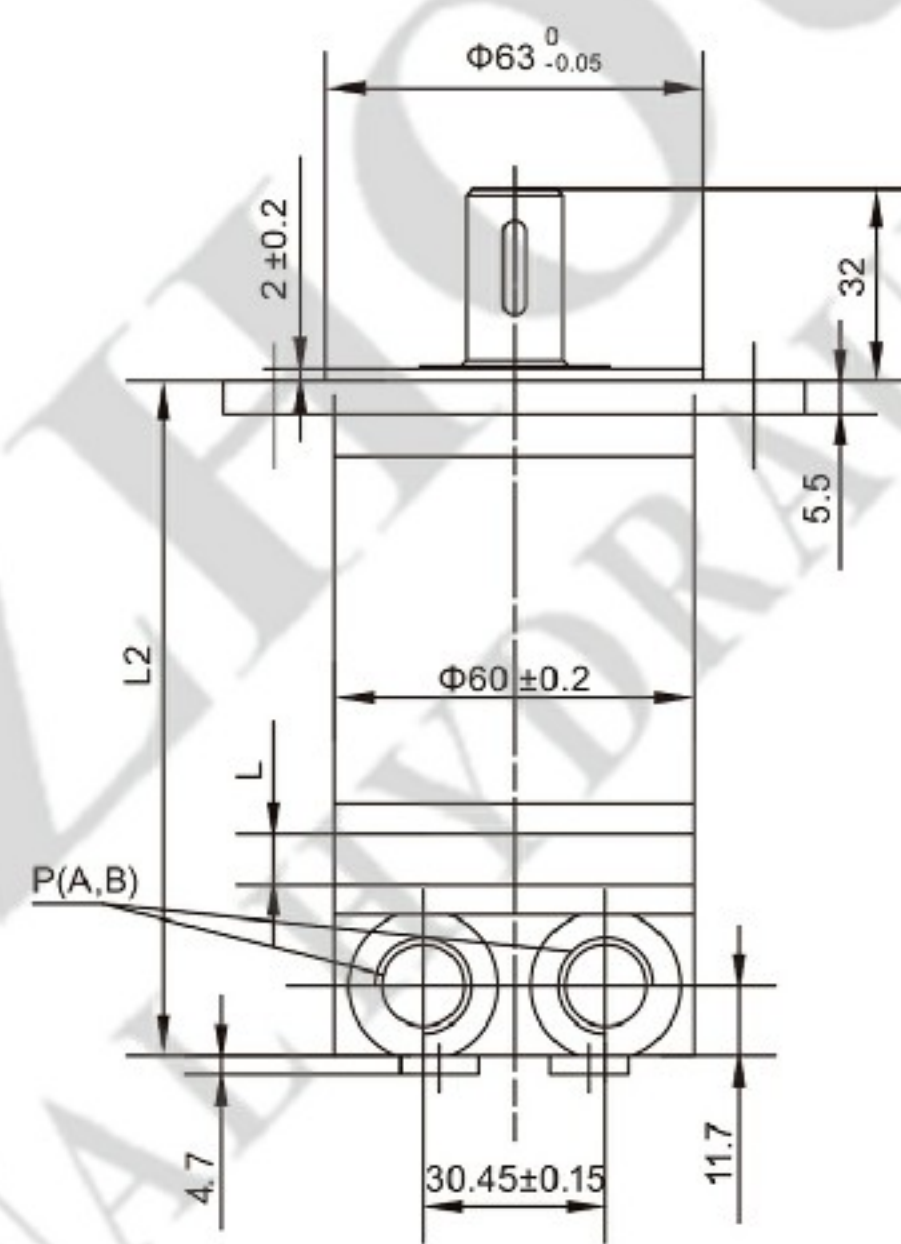
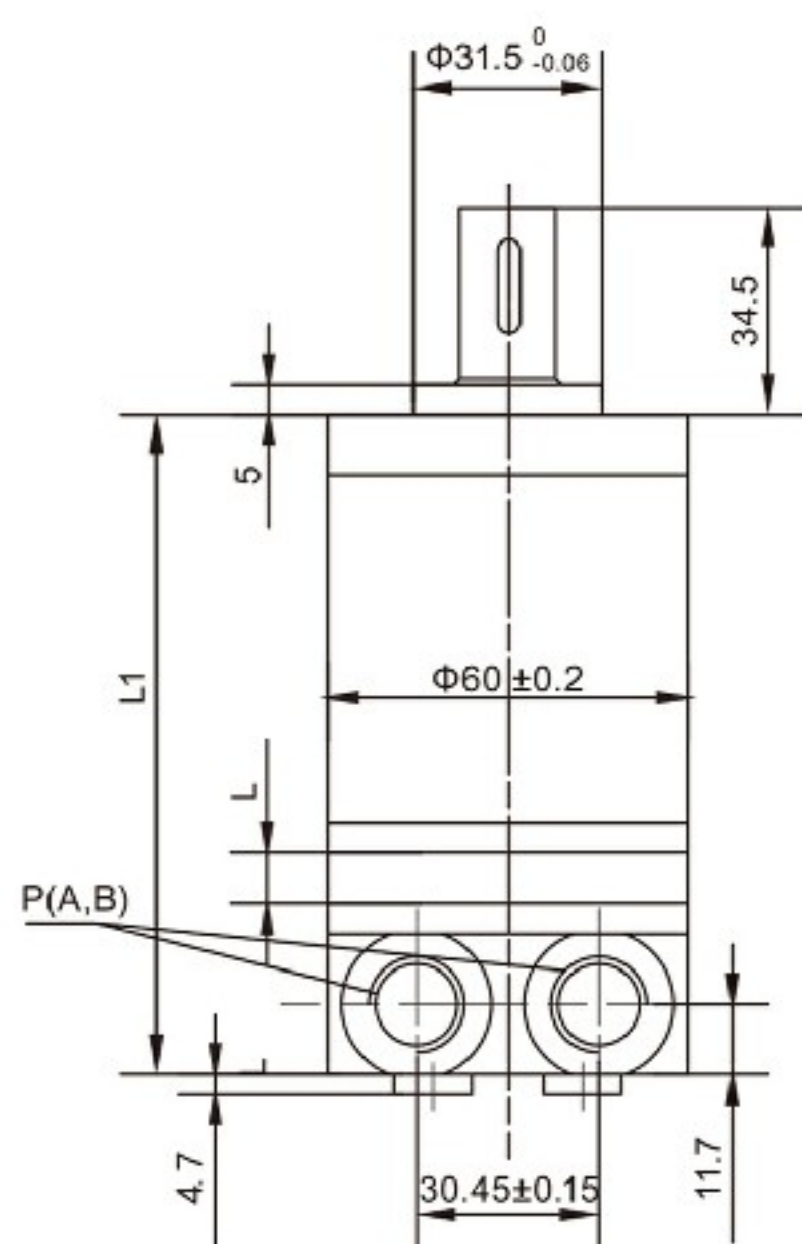
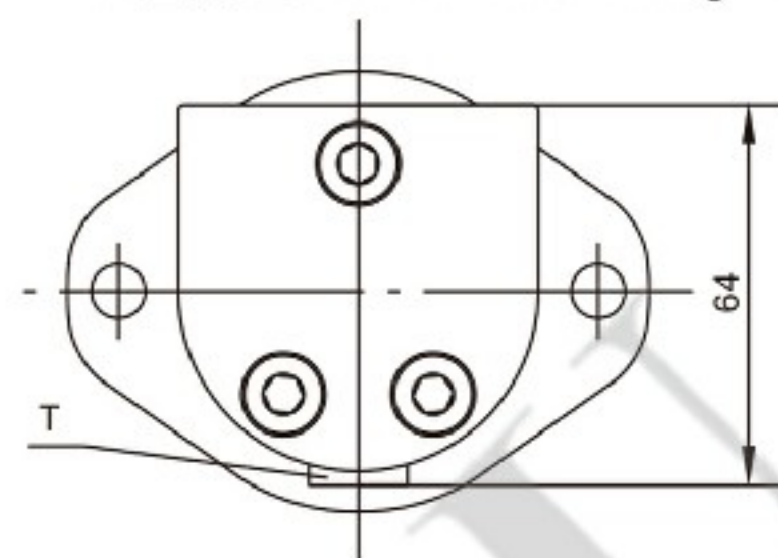
■ OMM外形安装图 Installation

E&U侧油口 (Side Port)

M&U型法兰 Flange M&U



F型法兰 2-Hole Oval Flange F



连接尺寸 Connection Size	代号Code	
	M	U
C	3-M6	3-1/4-28UNF

连接尺寸 Connection Size	代号Code			
	1E	1U	E	U
P	G3/8(12)	9/16-18UNF(12)	G3/8(12)	9/16-18UNF(12)
T	G1/8(8)	3/8-24UNF(8)	G1/8(8)	3/8-24UNF(8)

型号Type	OMM-8	OMM-12.5	OMM-20	OMM-32	OMM-40	OMM-50
L	3.5	5.5	8.5	13.5	17	21.5
L1	105	107	110	115	118.5	123
L2	108.5	110.5	113.5	118.5	122	126.5