

■ 特点 Feature:

OMS马达是一种盘配流马达

先进的盘配流设计, 低速性能好, 容积效率高, 并具有磨损自动补偿功能
双列圆锥滚针轴承能够承受大的径向力, 并应用于重载荷驱动的场所

OMS motor is one disc valve type gerolator motor,

Advanced design of disc distribution flow, which can provide improved performance at low speed

Higher volumetric for the automatically copensate wear.

Double taper roller bearings permit high radial loads, can be used on heavy vehicles in traction drive applications



■ OMS型号说明 Model Code

OMS	-400	S1	B1	P1	E
系列 Code	排量 Displacement	泄油口位置 Drain Port Position	安装法兰及止口 Mounting Flange&Spigot	输出轴 Shaft	油口&泄油口 Inlet&Outlet and Drain Port
OMS	80,100,125, 160,200,250, 315,400,475	S1:隔板上 (on Spacer Plate) S2:后盖上 (on End Cover) S3: S3 Type	参照下图 See Below Drawing		

■ OMS技术参数 Technical Data

型号 TYPE	OMS-80 OMSS-80 OMSW-80	OMS-100 OMSS-100 OMSW-100	OMS-125 OMSS-125 OMSW-125	OMS-160 OMSS-160 OMSW-160	OMS-200 OMSS-200 OMSW-200	OMS-250 OMSS-250 OMSW-250	OMS-315 OMSS-315 OMSW-315	OMS-400 OMSS-400 OMSW-400	
排量 Displacement(ml/r)	80.5	100.5	126.3	160.8	200.9	252.6	321.5	401.9	
最大压降 Max.Pressure.Drop (Mpa)	连续 cont.	17.5	17.5	17.5	16	16	12.5	12.5	10
	间断 int.	20	20	20	20	20	16	16	14
	尖峰 peak.	22.5	22.5	22.5	22.5	22.5	20	20	17.5
最大扭矩 Max.torque (N.m)	连续 cont.	194	242	303	358	438	440	551	560
	间断 int.	218	283	345	429	540	580	625	687
	尖峰 peak.	271	318	373	459	576	700	831	865
转速范围(连续) Speed.Range(cont.)(r/min)	10-810	10-750	9-600	7-470	6-375	6-300	5-240	5-180	
最大流量(连续) Max.Flow(cont.)(L/min)	65	75	75	75	75	75	75	75	
最大输出功率(连续) Max.Output.Power(cont.)(Kw)	14	16	16	14	14	11	10	8	
重量 Weight (kg)	9.8	10.0	10.3	10.7	11.1	11.6	12.3	13.1	

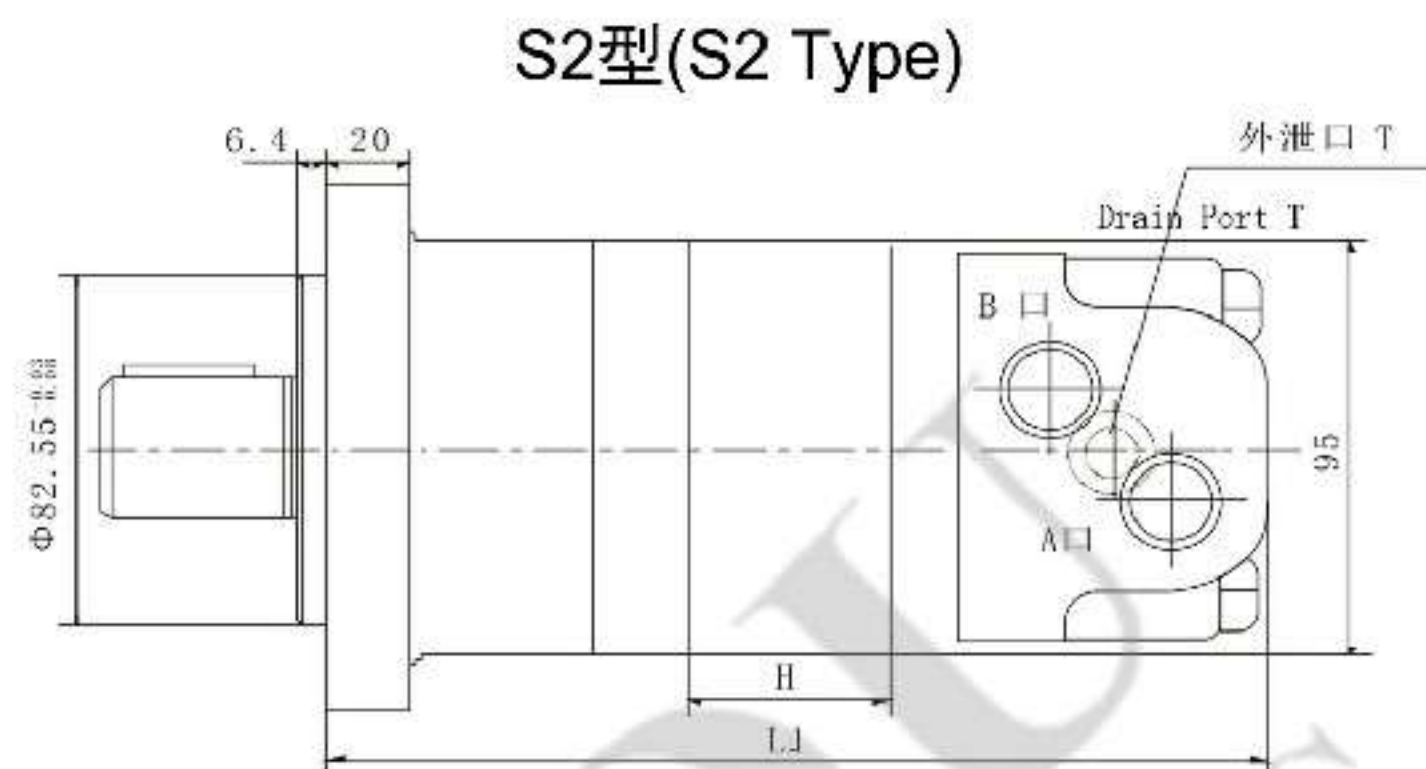
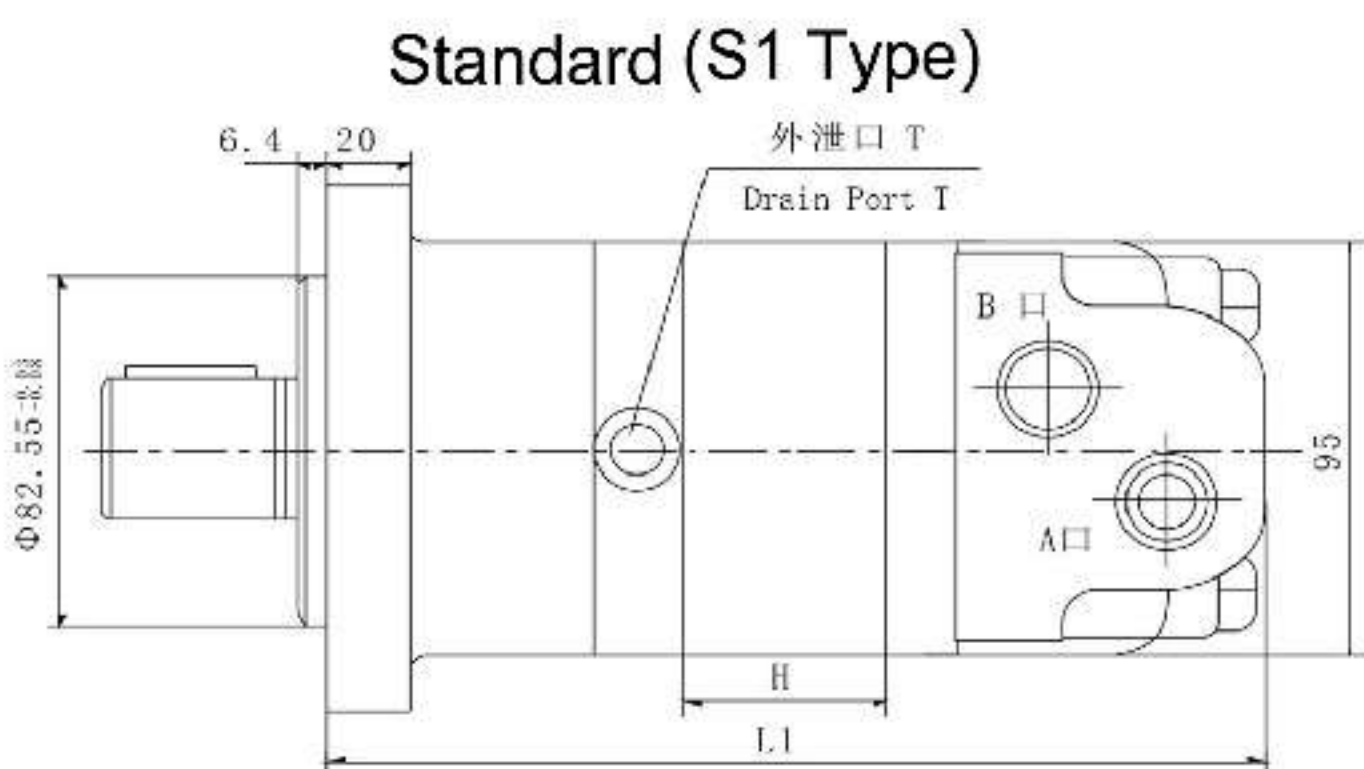
间断工作时间每分钟不得超过6秒, 尖峰工作时间每分钟不得超过0.6秒

Intermittent operation the permissible values may occur for max. 10% of every minute

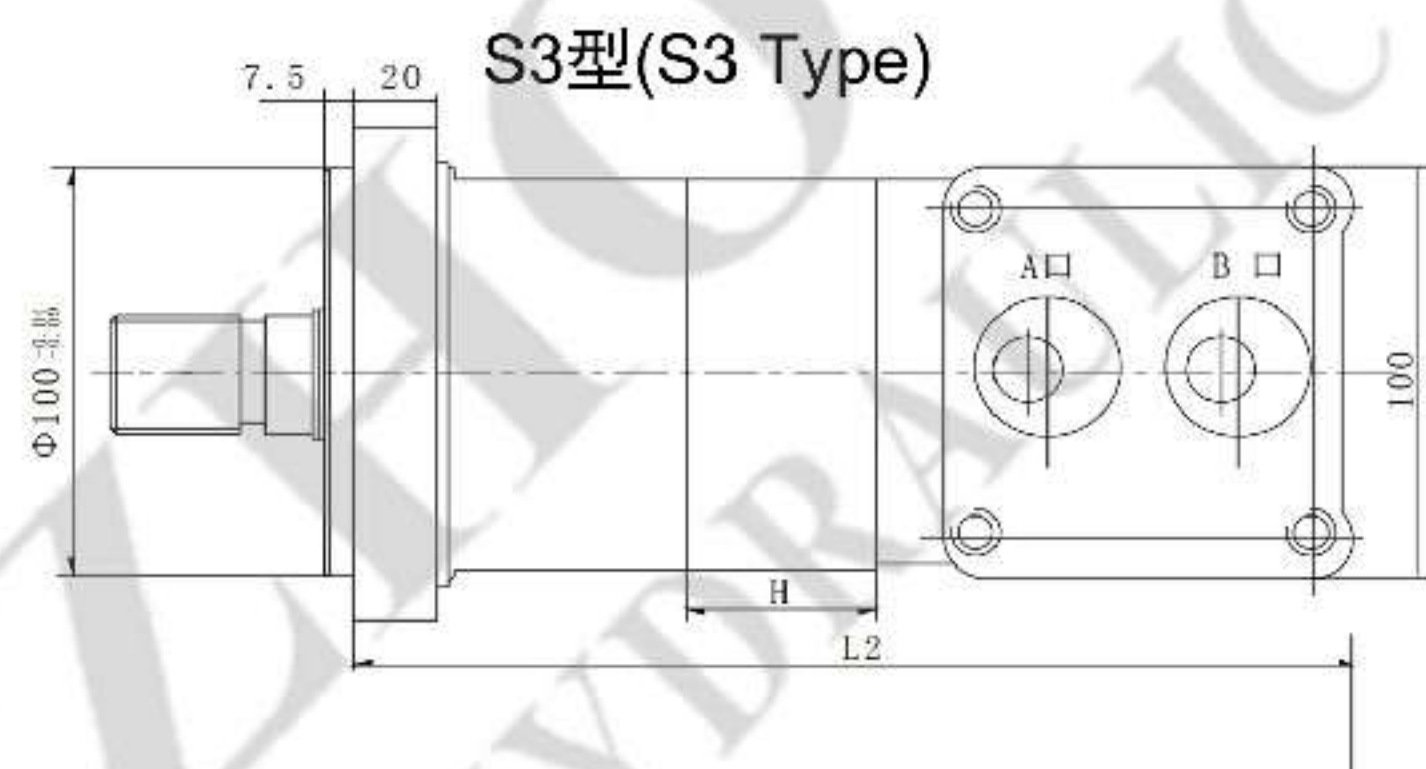
Peak load: the permissible values may occur for max. 1% of every minute

■ 轴承受最大扭矩(N.m): $\Phi 25$, $\Phi 25.4$ 花键轴为360, $\Phi 25$, $\Phi 25.4$ 平键轴为300

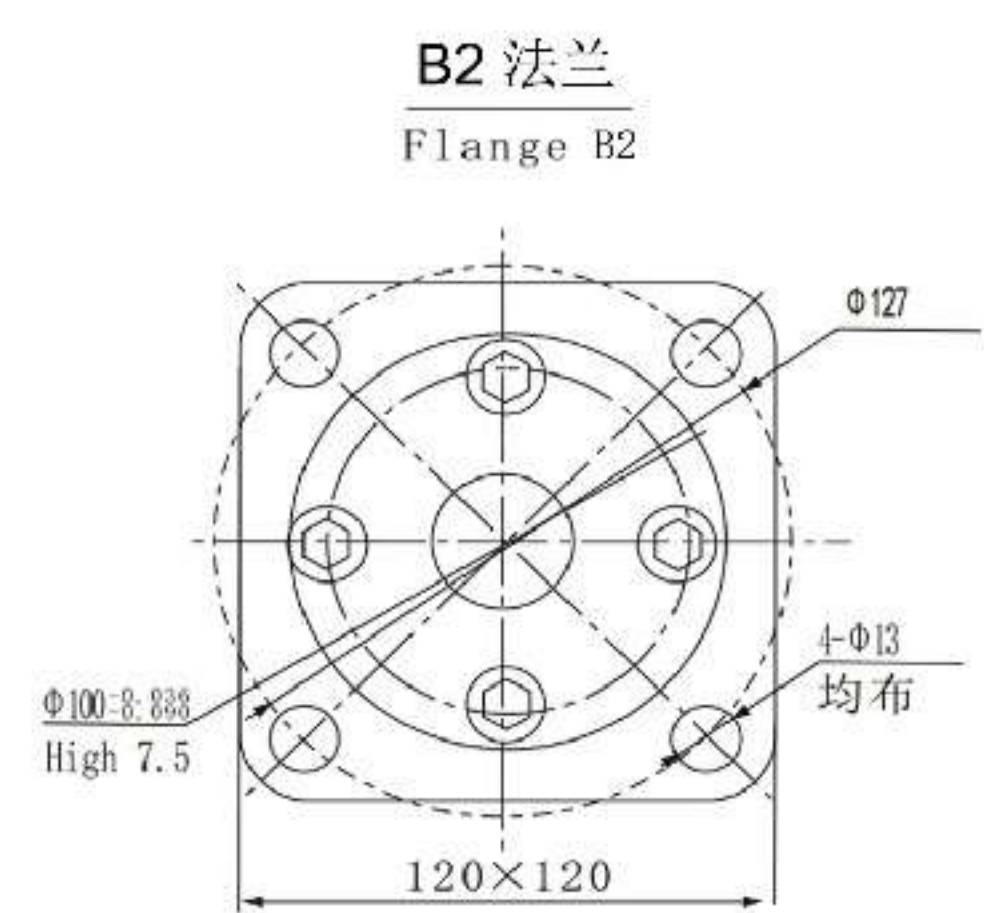
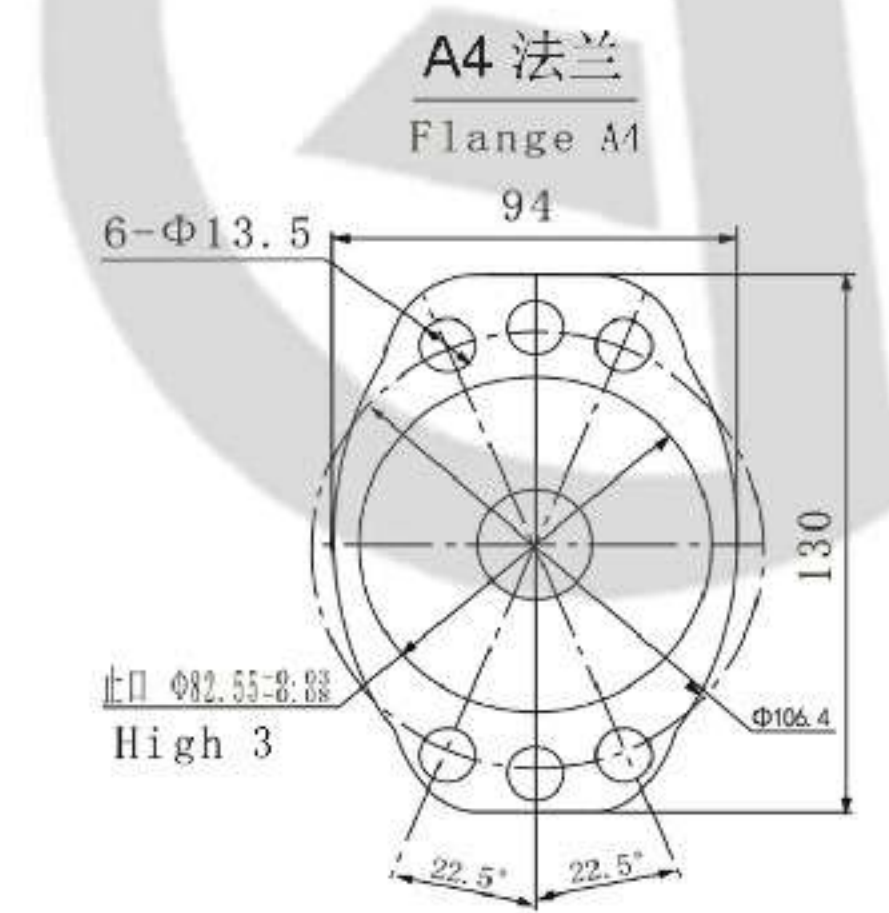
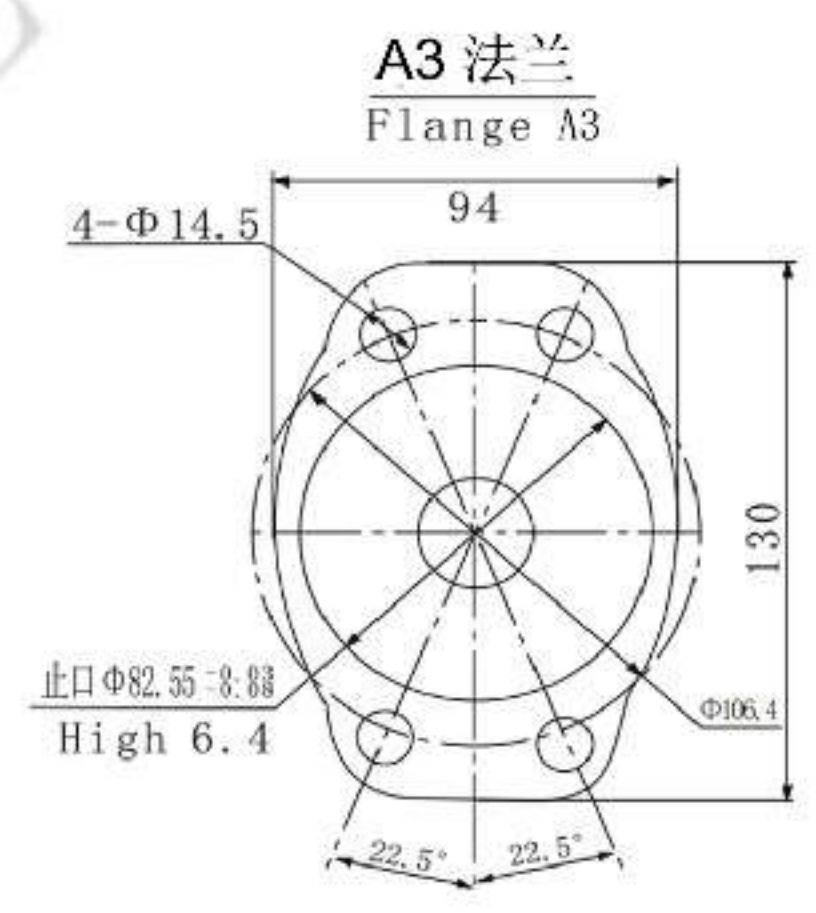
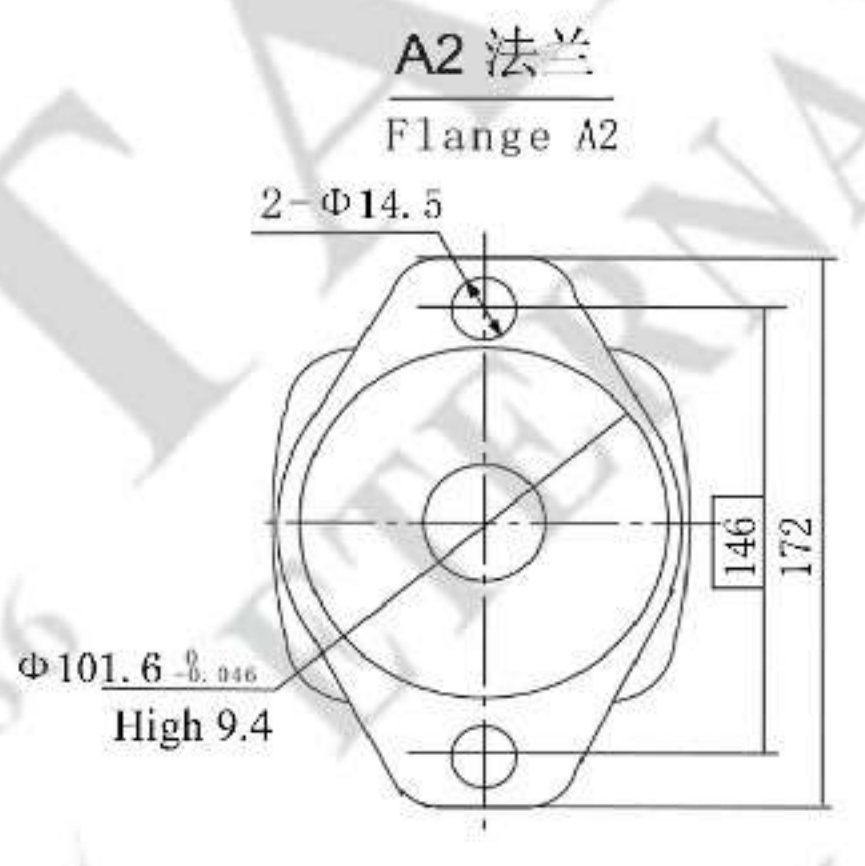
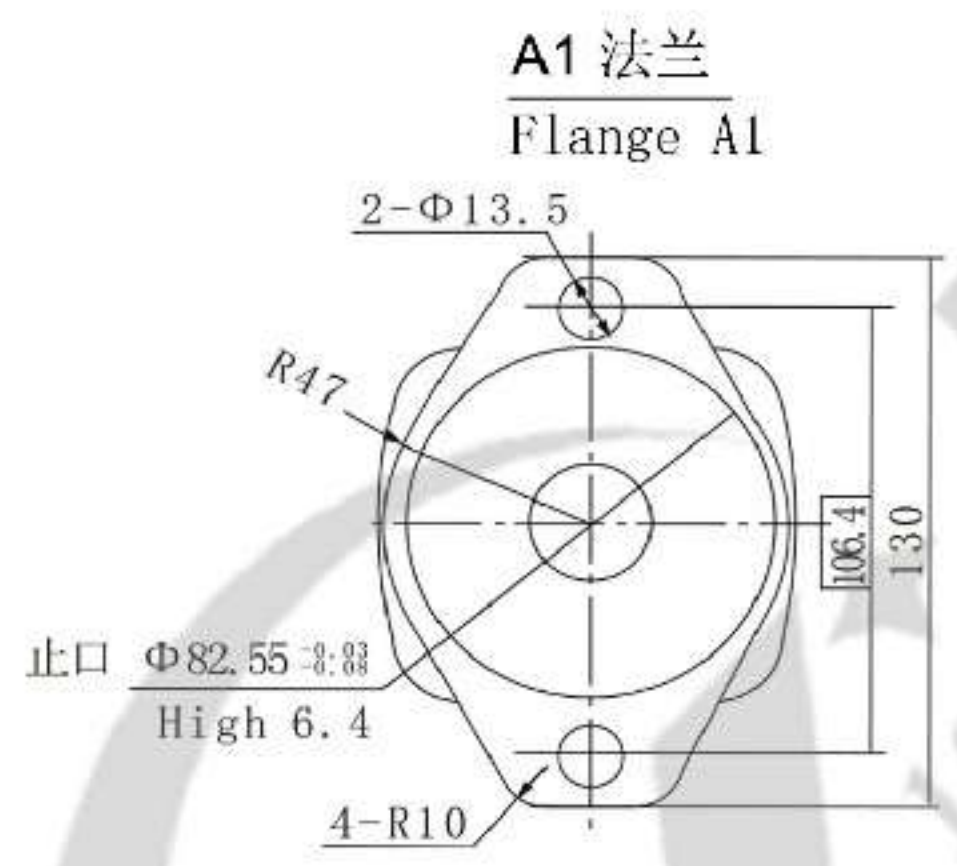
OMS马达连接尺寸—外形图 Dimensions&Mounting



排量 (ml/r) Displacement	80	100	130	160	195	245	305	395	490
H	14.4	18	22.8	28.8	35.6	44.6	56	72	90
L1	180	184	188	195	201	211	223	239	256
L2	208	212	216	222	229	238	249	265	282

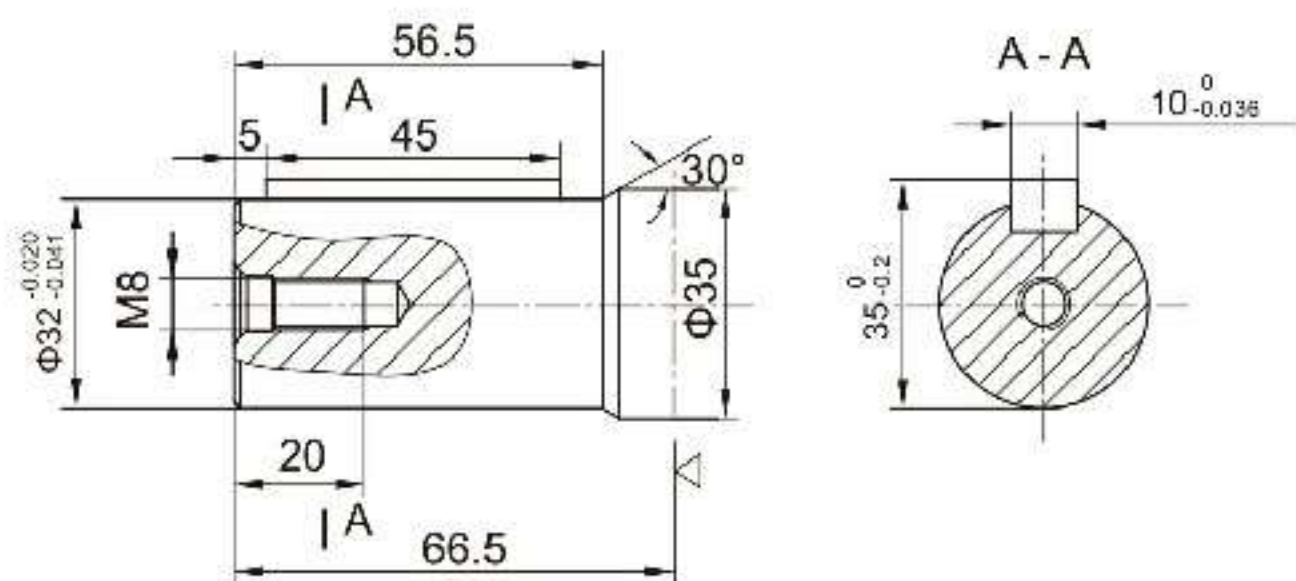


OMS马达连接尺寸—安装法兰 Flange

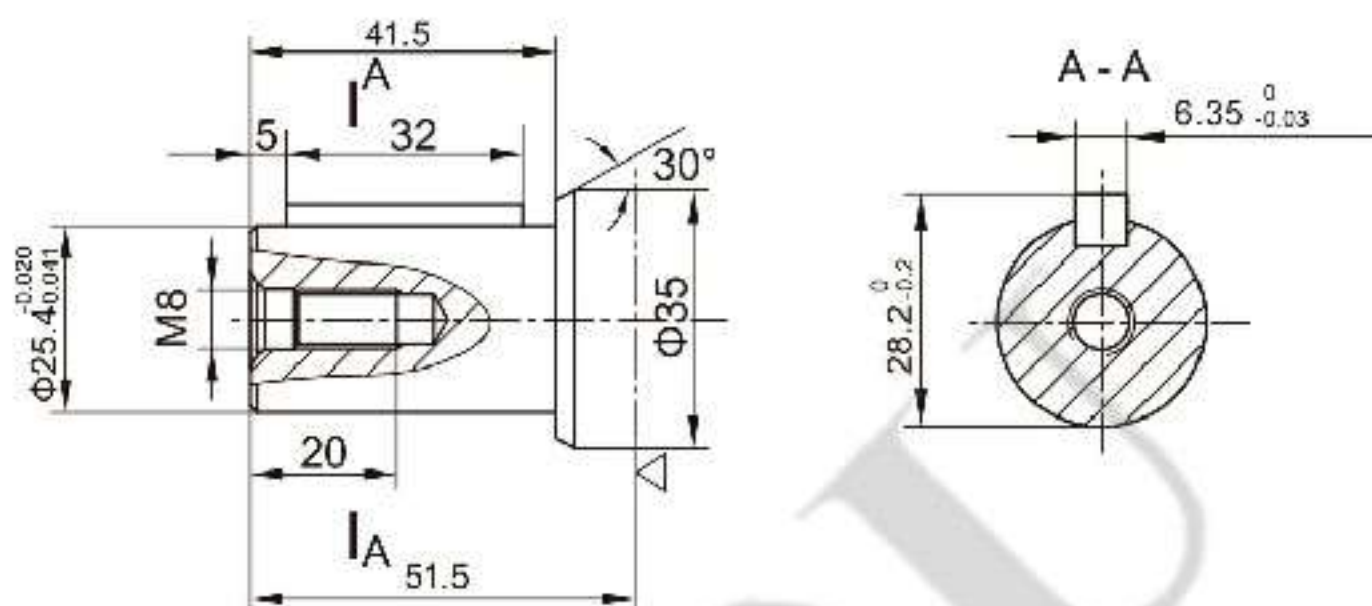


■ OMS外形安装尺寸—输出轴 Shaft Version

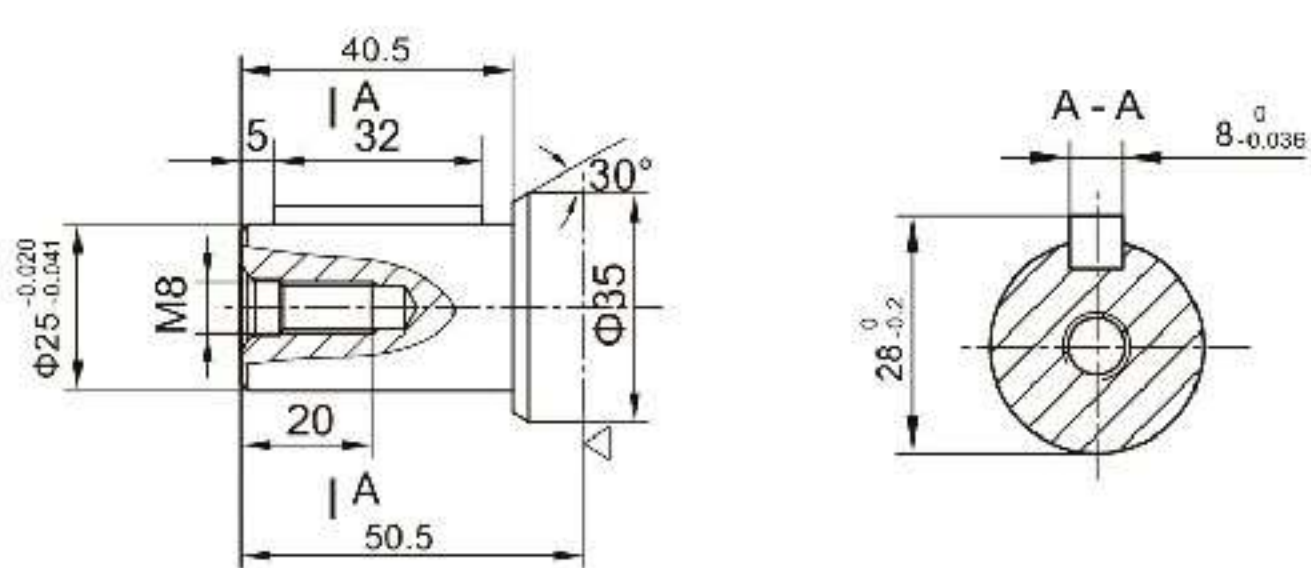
P1: $\Phi 32$ 平键轴, 平键 $10 \times 8 \times 45$
 $\Phi 32$ Cylindrical shaft, parallel key $10 \times 8 \times 45$



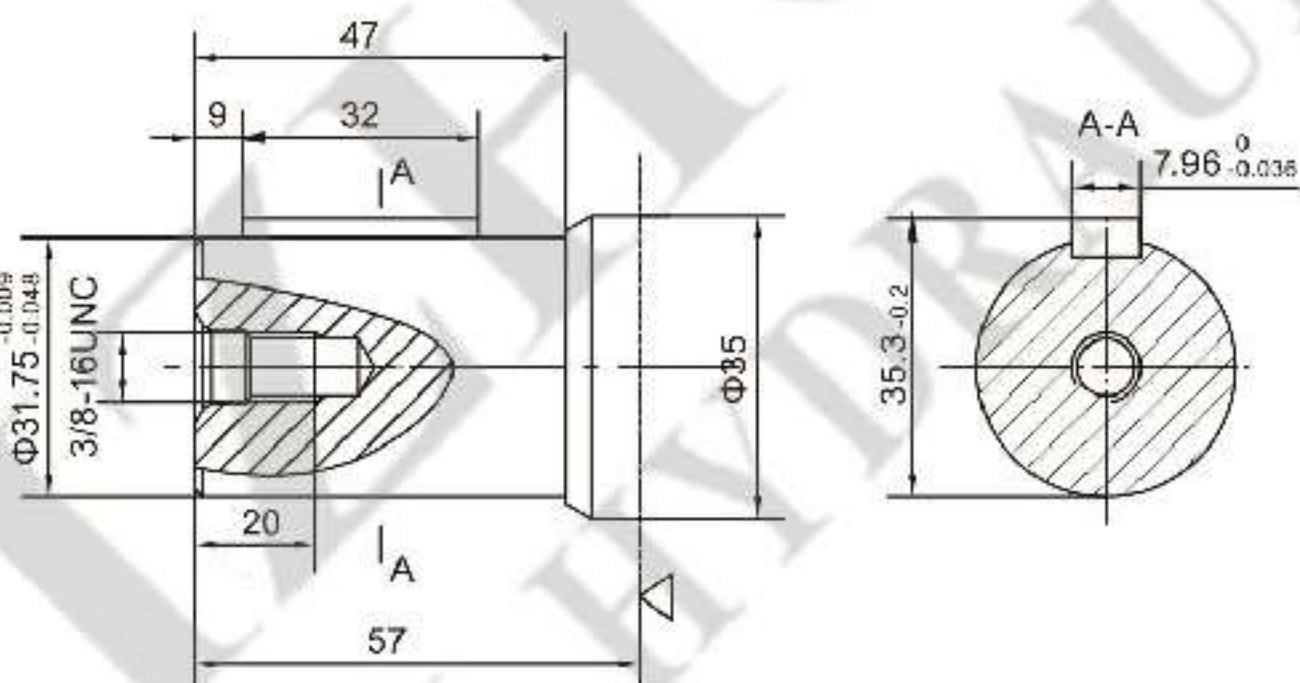
P2: $\Phi 25.4$ 平键轴, 平键 $6.35 \times 6.35 \times 32$
 $\Phi 25.4$ Cylindrical shaft, parallel key $6.35 \times 6.35 \times 32$



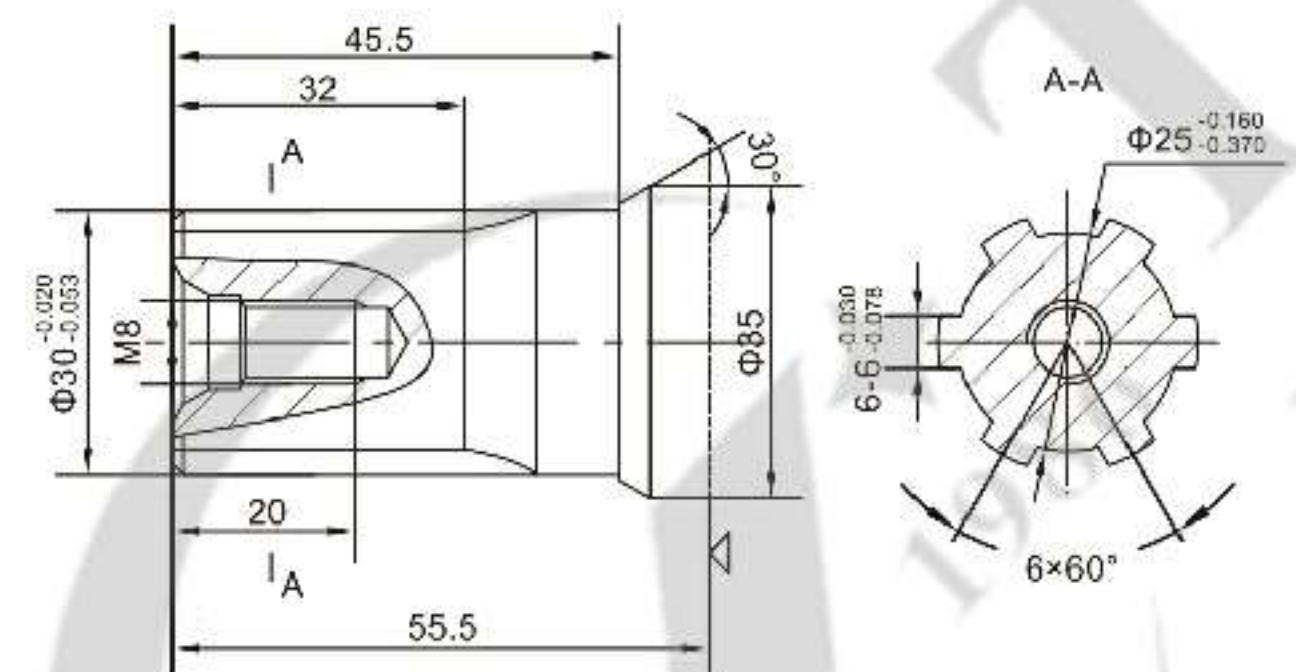
P3: $\Phi 25$ 平键轴, 平键 $8 \times 7 \times 32$
 $\Phi 25$ Cylindrical shaft, parallel key $8 \times 7 \times 32$



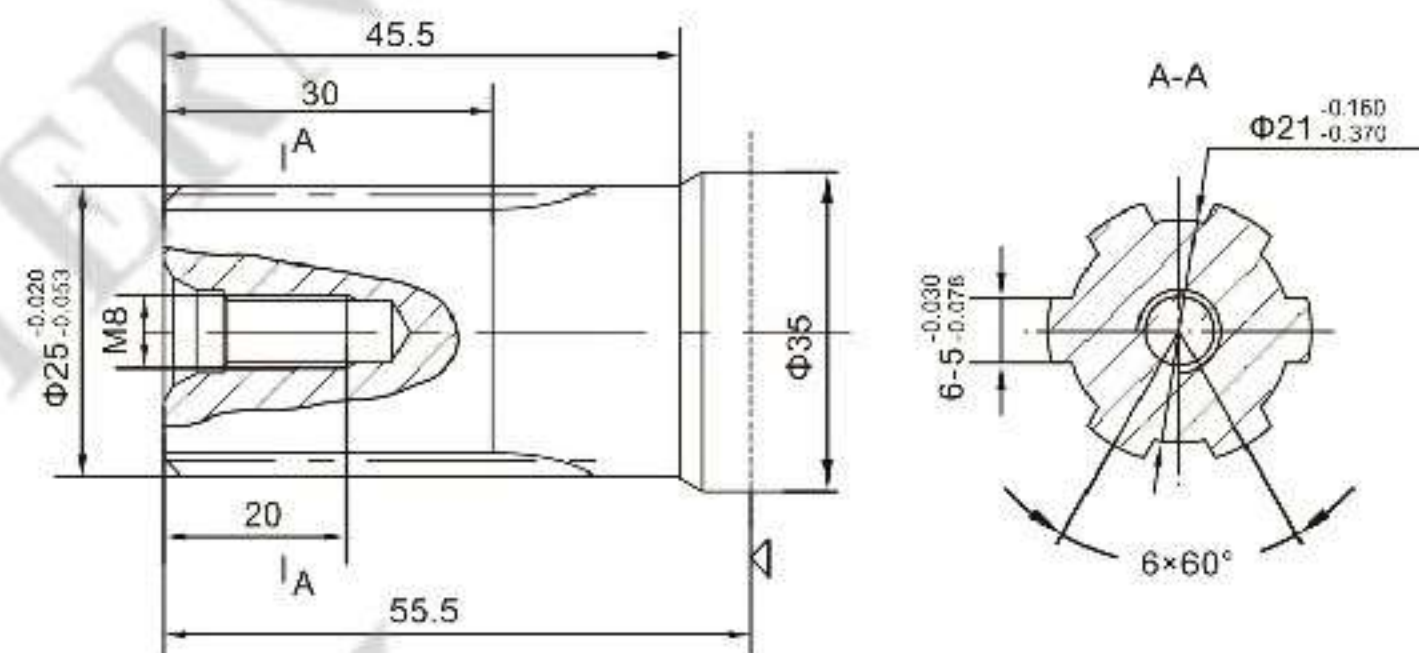
P4: $\Phi 31.75$ 平键轴, 平键 $7.96 \times 7.96 \times 32$
 $\Phi 31.75$ Cylindrical shaft, parallel key $7.96 \times 7.96 \times 32$



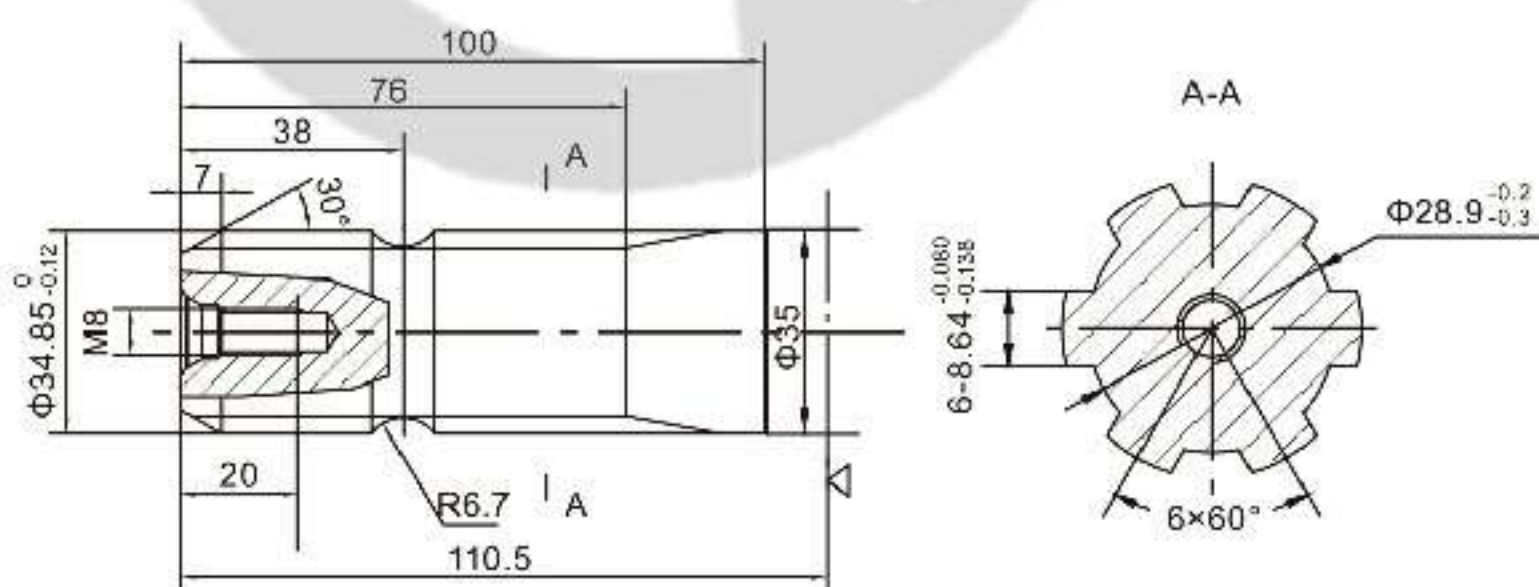
H1: $\Phi 30$ 矩形花键轴, $6-30 \times 25 \times 6$
 $\Phi 30$ Splined shaft, $6-30 \times 25 \times 6$



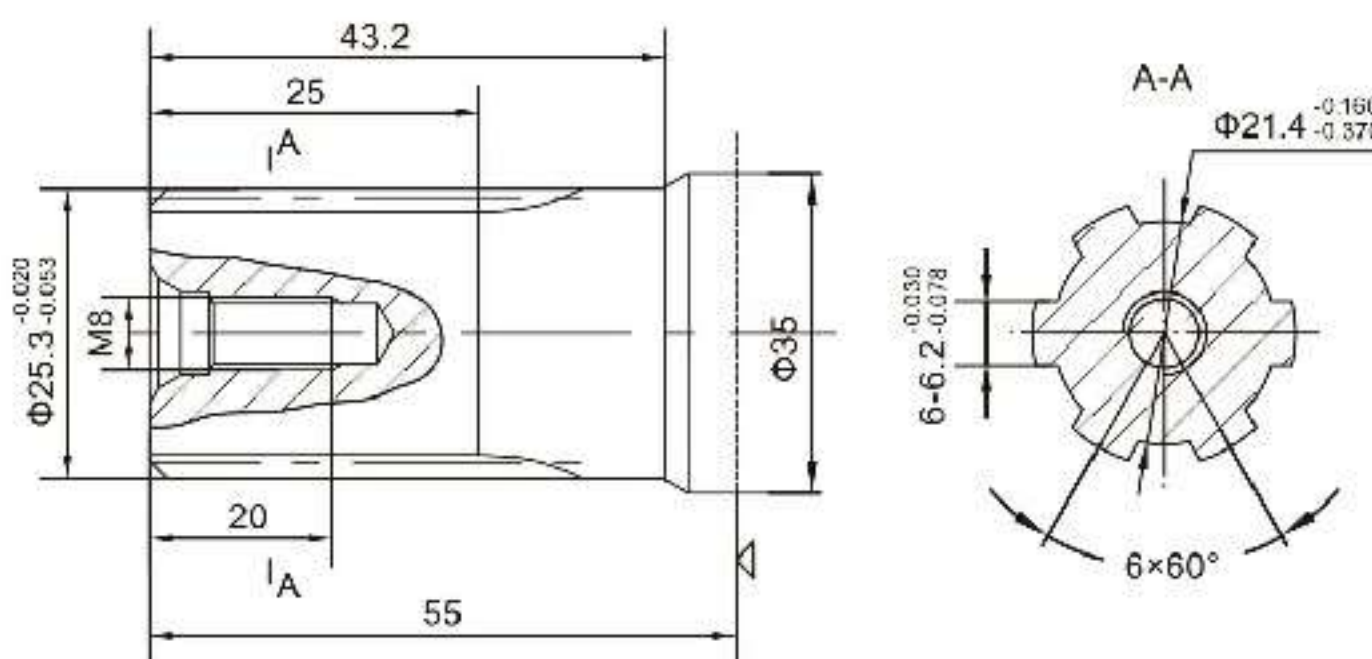
H2: $\Phi 25$ 矩形花键轴, $6-25 \times 21 \times 5$
 $\Phi 25$ Splined shaft, $6-25 \times 21 \times 5$



H3: $\Phi 34.85$ 矩形花键轴, $6-34.85 \times 28.9 \times 8.64$
 $\Phi 34.85$ Splined shaft, $6-34.85 \times 28.9 \times 8.64$



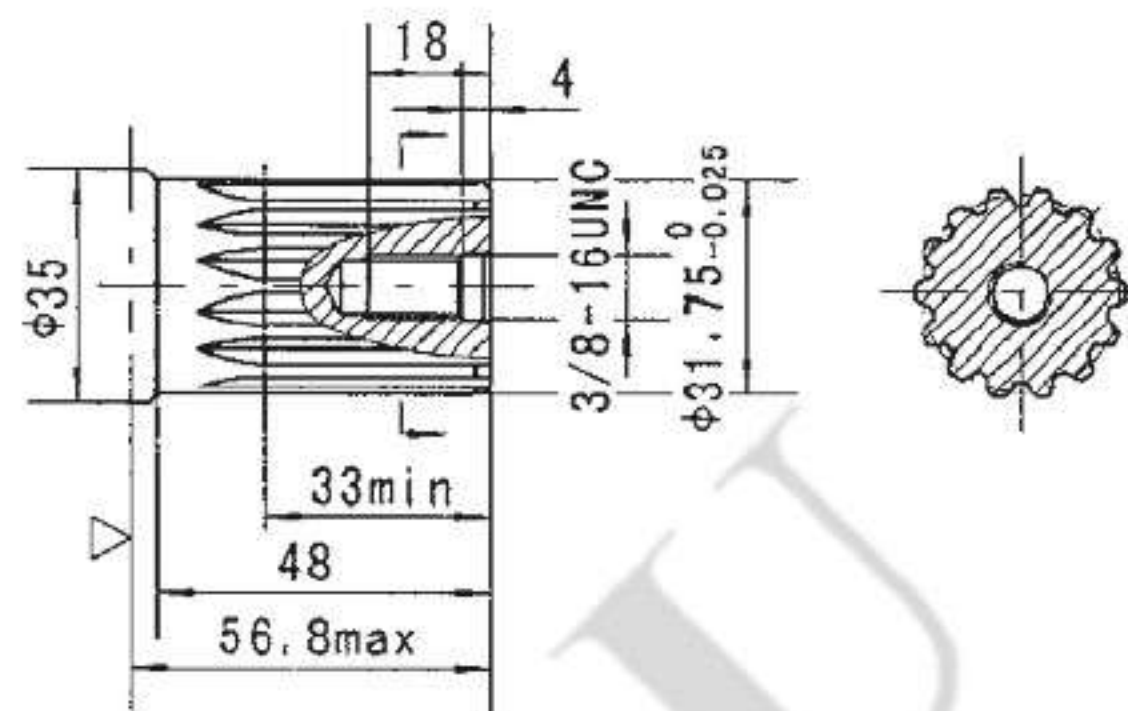
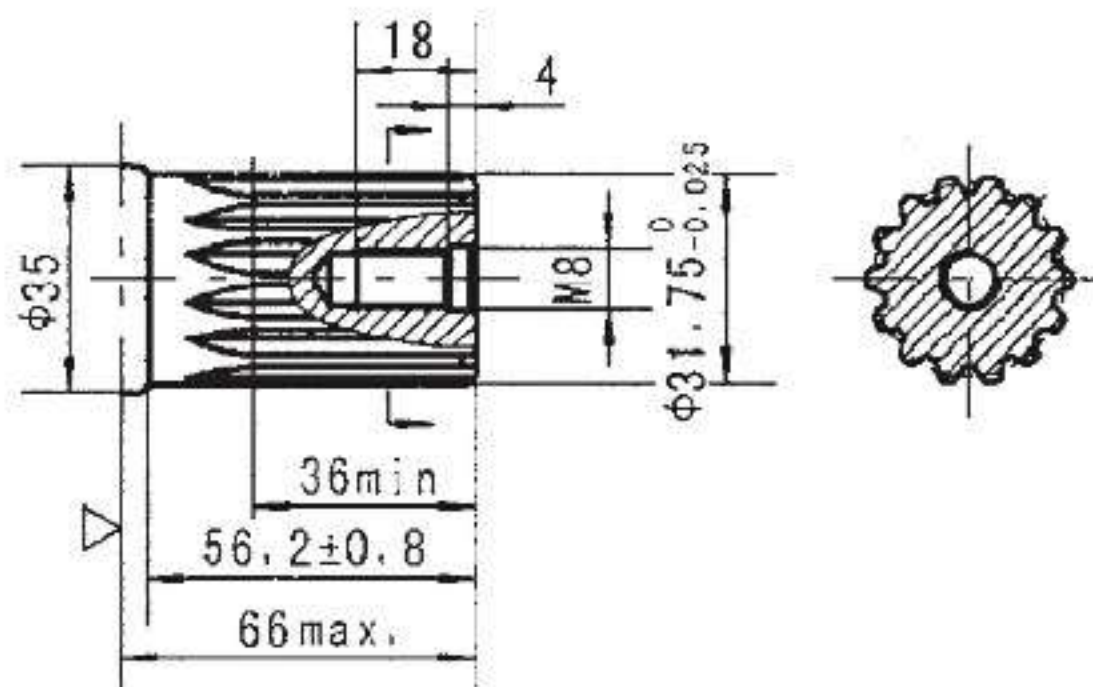
H4: $\Phi 25.3$ 矩形花键轴, $6-25.3 \times 21.4 \times 6.2$
 $\Phi 25.3$ Splined shaft, $6-25.3 \times 21.4 \times 6.2$



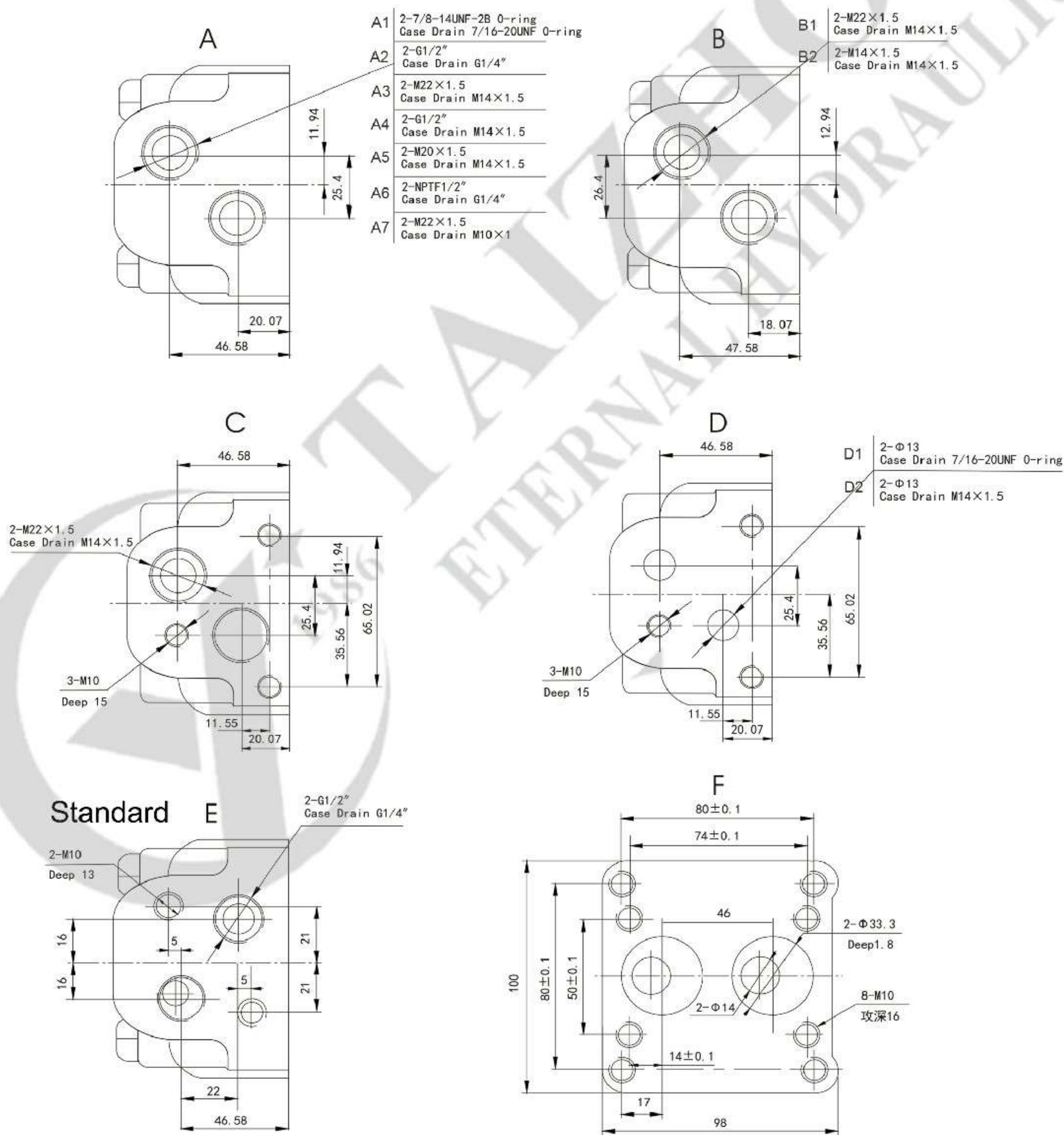
◁-- 马达安装面
 Motor mounting surface

FD: $\Phi 31.75$ 渐开线花键轴 14-DP12/24
 $\Phi 31.75$ involute splined shaft 14-DP12/24

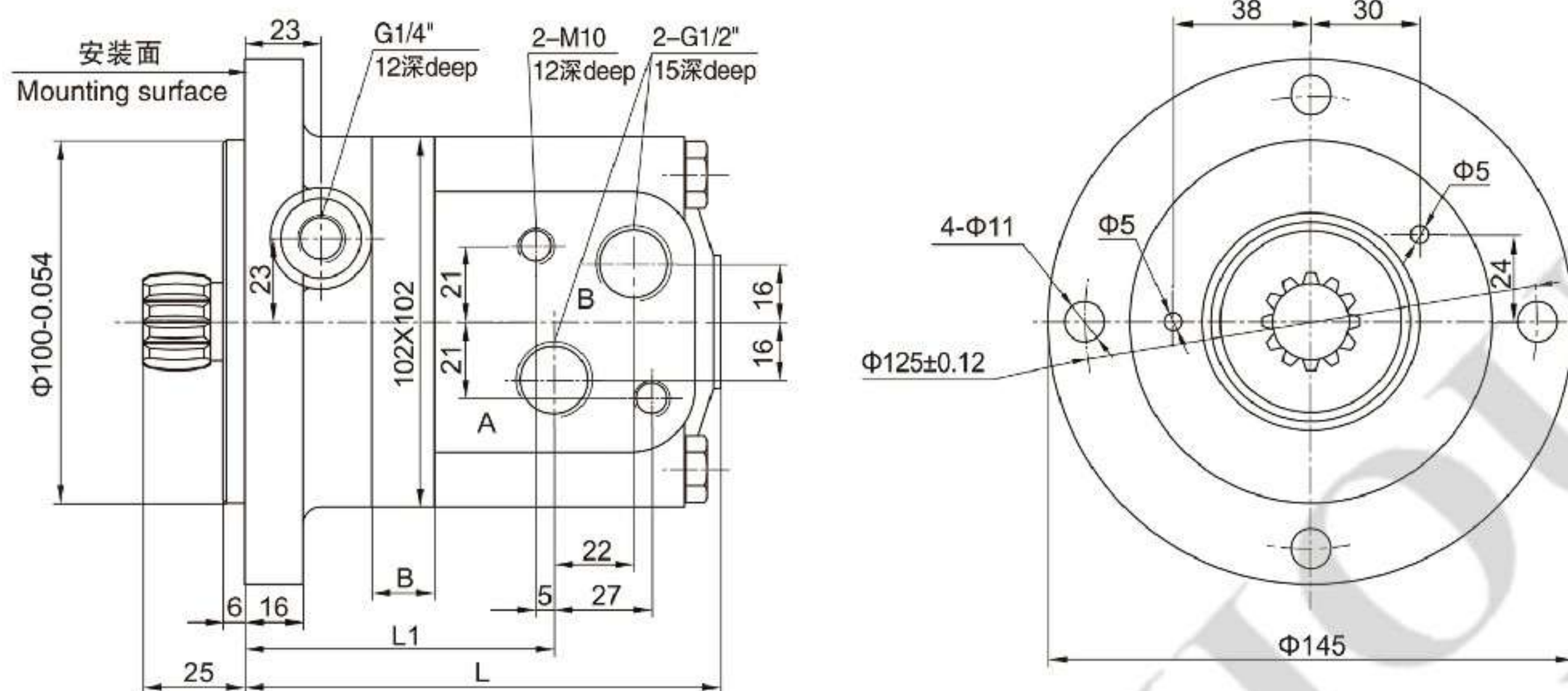
F: $\Phi 31.75$ 渐开线花键轴 14-DP12/24
 $\Phi 31.75$ involute splined shaft 14-DP12/24



OMS马达连接尺寸—油口 Port

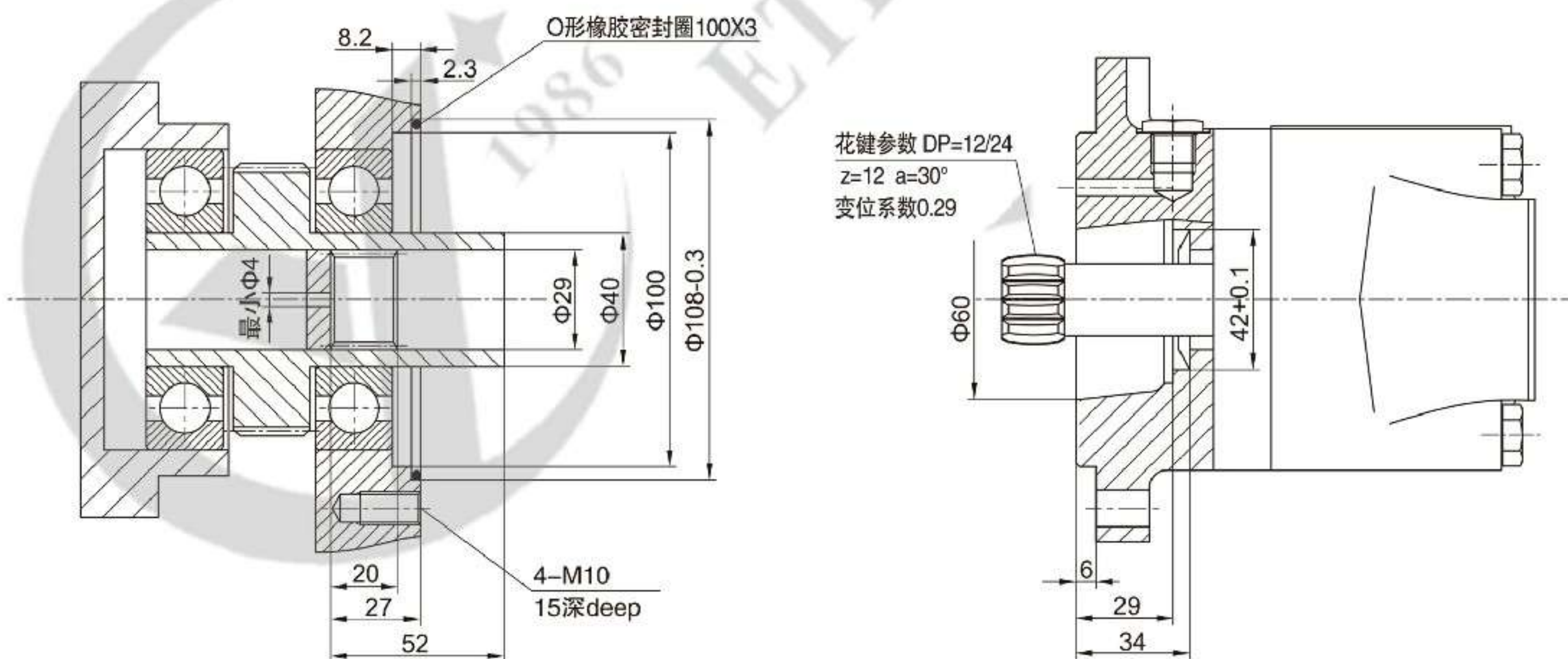


■ OMSS外形安装图 Installation

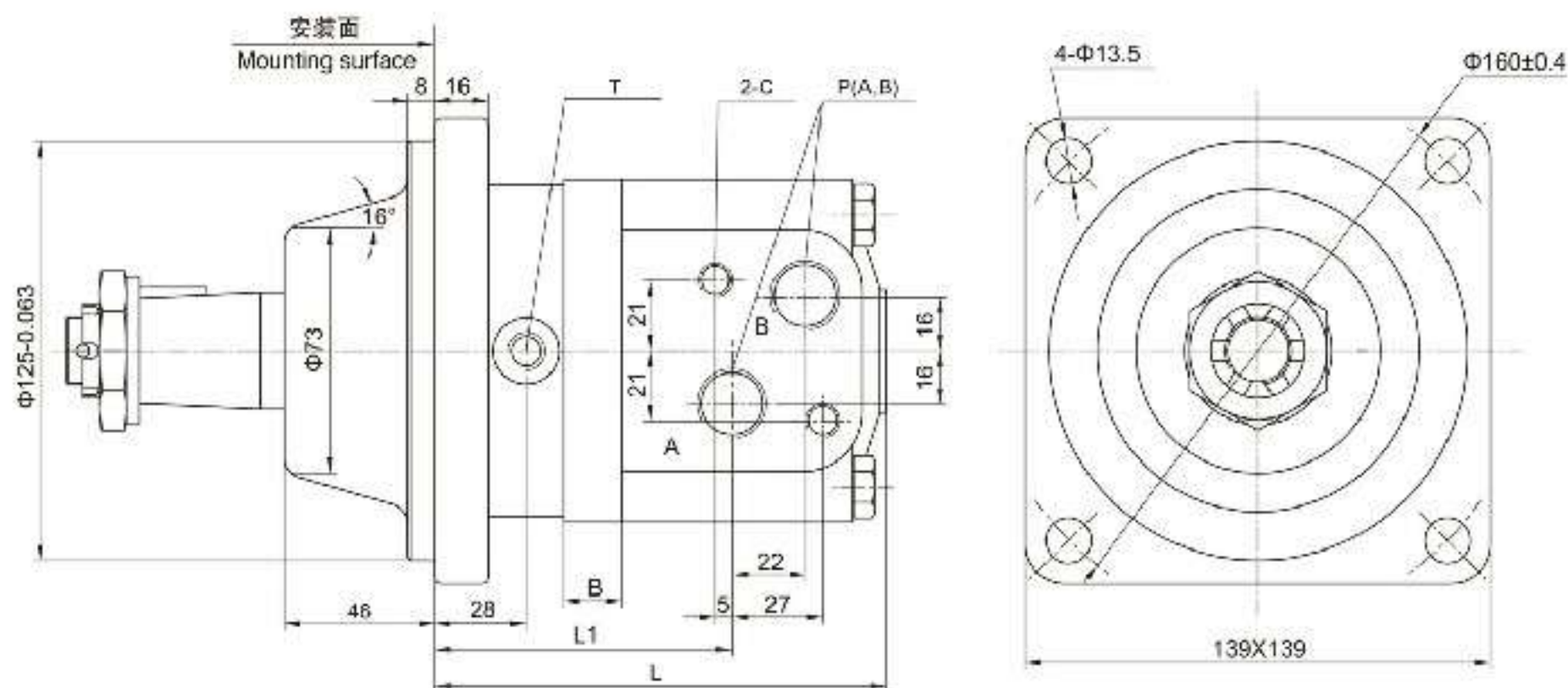


型号Type	OMSS-80	OMSS-100	OMSS-125	OMSS-160	OMSS-200	OMSS-250	OMSS-315	OMSS-400
L	122.5	126	130.5	136.5	143.5	152.5	164.5	178.5
L1	79.5	83	87.5	93.5	100.5	109.5	121.5	135.5
B	11	14.5	19	25	32	41	53	67

■ OMSS外形连接尺寸 Dimension of The Attached Component



OMSW轮用马达外形安装图 Installation



型号 Type	OMSW-80	OMSW-100	OMSW-125	OMSW-160	OMSW-200	OMSW-250	OMSW-315	OMSW-400
L	126	129.5	134	140	147	156	168	182
L1	83	86.5	91	97	104	113	125	139
B	11	14.5	19	25	32	41	53	67

OMSW轮用马达油口代号 Ports Code

油口 Ports	P(A、B)(深deep)	C (深deep)	T (深deep)
代号 Code			
Y	G1/2 (15)	M10 (12)	G1/4 (12)
Y5	7/8-14UNF (15)	—	7/16-20UNF (12)

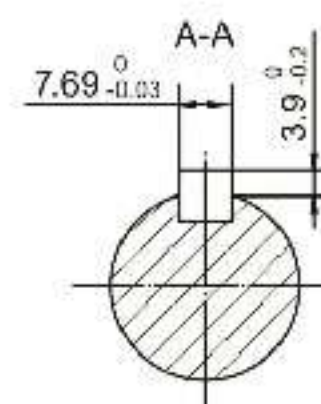
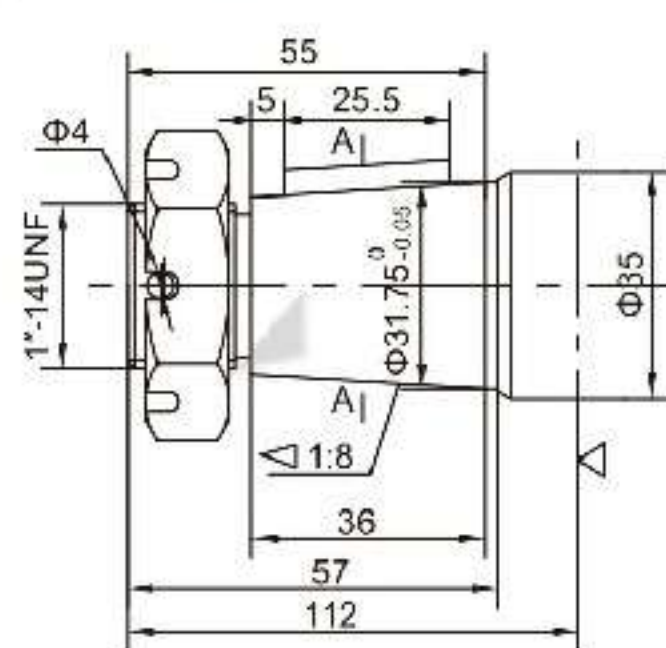
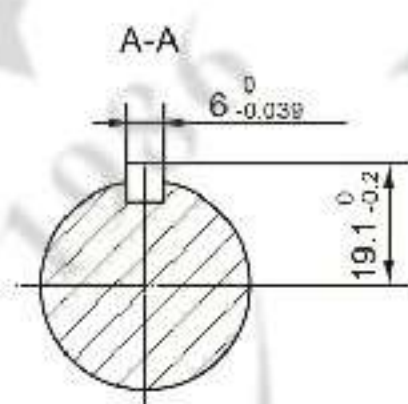
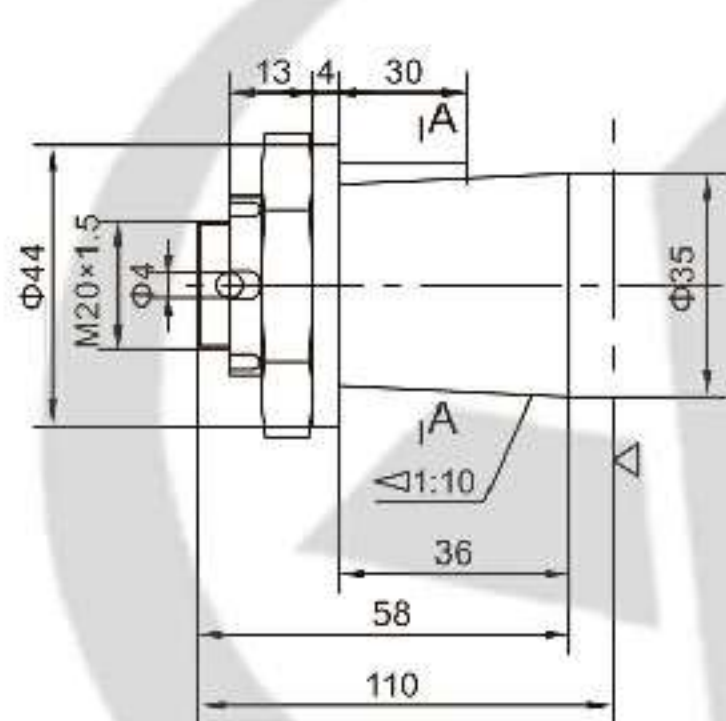
注: P(A、B)—进出油口, C—油口面安装螺纹 (—表示没有此螺纹孔), T—泄油口

Note: P(A、B)—Ports, C—Mounting Thread (—Indicates no this thread), T—Drain connettion

OMSW输出轴 Shaft Version

Z1: Φ35锥轴, 锥度1:10, 平键6×6×30
Φ35 Tapered shaft, taper1:10, parallel key 6×6×30

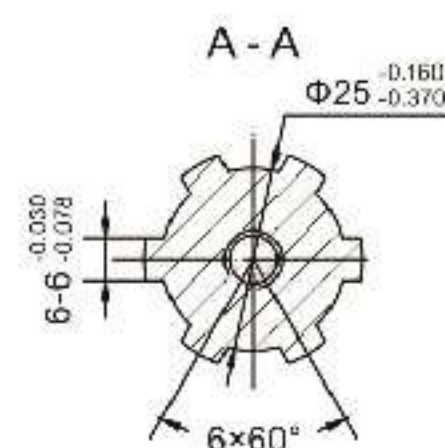
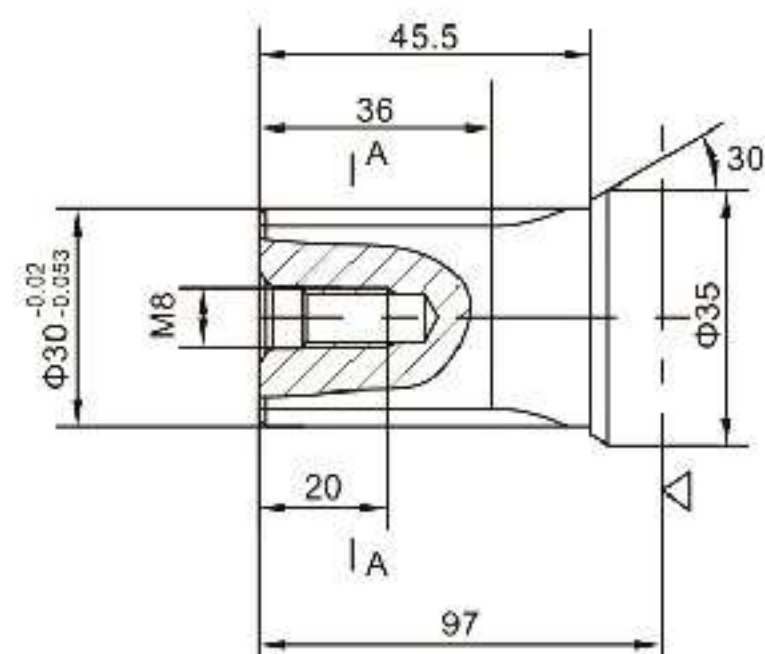
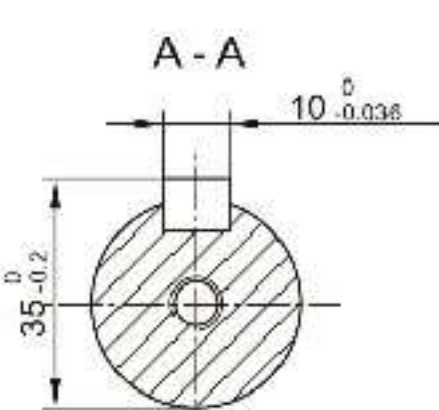
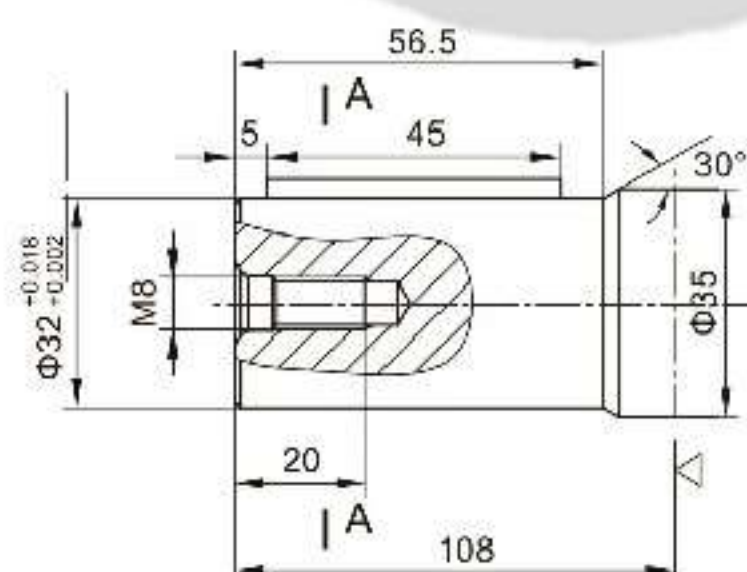
Z2: Φ31.75锥轴, 锥度1:8, 平键7.96×7.96×25
Φ31.75 Tapered shaft, taper1:8, parallel key 7.96×7.96×25



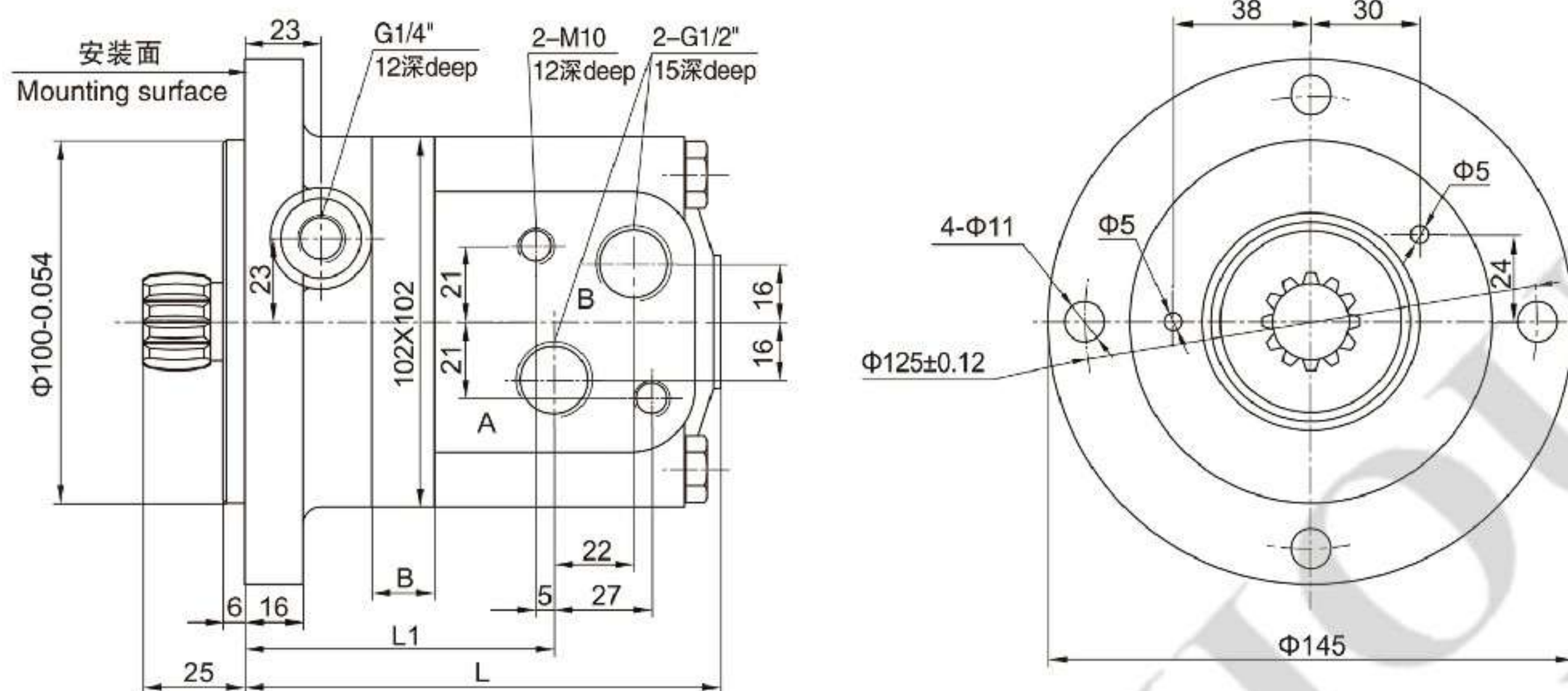
△-- 马达安装面
Motor mounting surface

P1: Φ32平键轴, 平键10×8×45
Φ32 Cylindrical shaft, parallel key 10×8×45

H1: Φ30矩形花键轴, 6-30×25×6
Φ30 Splined shaft, 6-30×25×6



■ OMSS外形安装图 Installation



型号Type	OMSS-80	OMSS-100	OMSS-125	OMSS-160	OMSS-200	OMSS-250	OMSS-315	OMSS-400
L	122.5	126	130.5	136.5	143.5	152.5	164.5	178.5
L1	79.5	83	87.5	93.5	100.5	109.5	121.5	135.5
B	11	14.5	19	25	32	41	53	67

■ OMSS外形连接尺寸 Dimension of The Attached Component

