

■ 特点 Feature:

OMT马达是一种盘配流马达。先进的盘配流结构设计，低速性能好。容积效率高，并具有磨损自动补偿功能。双列圆锥滚针轴承能够承受大的径向力，并应用于重载荷驱动的场所。

OMT Motor is one disc valve type gerolator motor, Advanced design of disc distribution flow, which can provide improve performance at low speed Higher volumetric for the automatically compensate wear. Double taper roller bearings permit high radial loads, can be used on heavy vehicles in traction drive applications



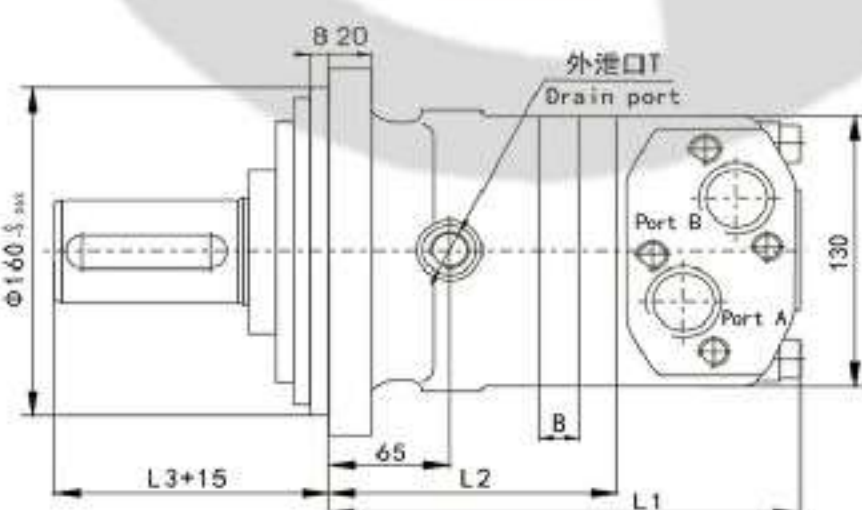
■ OMT型号说明 Model Code

OMT	-315	J	A1	P1	D
系列 Code	排量 Displacement	油口位置 Port Position	安装法兰及止口 Mounting Flange&Spigot	输出轴 Shaft	油口&泄油口 Inlet&Outlet and Drain Port
OMT	160,200,230, 250,315,400, 500,630,800	J D E	参照下图 See Below Drawing		

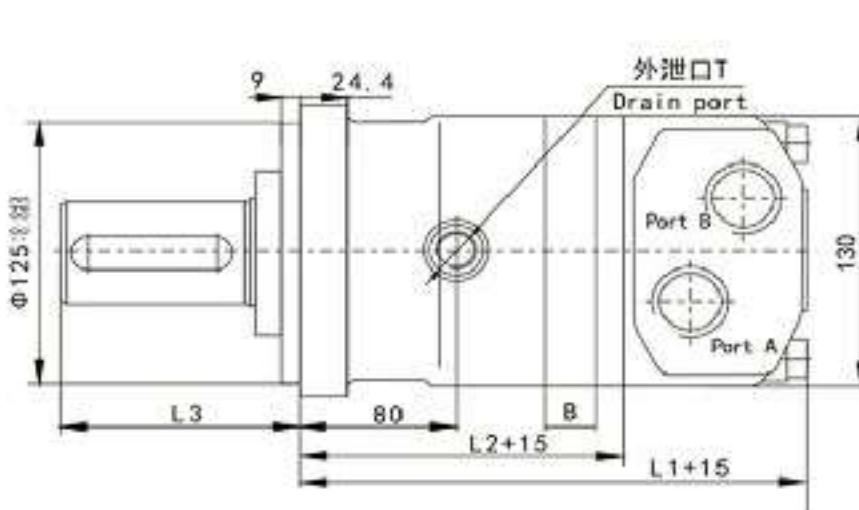
■ OMT技术参数 Technical Data

型号 TYPE	OMT-160	OMT-200	OMT-230	OMT-250	OMT-315	OMT-400	OMT-500	OMT-630	OMT-800
排量 Displacement(ml/r)	161.1	201.4	232.5	251.8	326.3	410.9	523.6	629.1	801.8
最大压降 Max.Pressure.Drop(Mpa)	连续 cont.	20	20	20	20	18	16	14	12.5
	间断 int.	24	24	24	24	21	18	16	13
	尖峰 peak.	28	28	28	28	24	21	19	16
最大扭矩 Max.Torque(N.m)	连续 cont.	470	590	670	730	950	1080	1220	1464
	间断 int.	560	710	821	880	1140	1260	1370	1520
	尖峰 peak.	669	838	958	1036	1346.3	1450.3	1643.8	1618.8
转速范围(连续) Speed.Range(cont)(r/min)	625	625	536	500	380	305	240	196	154
最大流量(连续) Max.Flow(cont)(L/min)	100	125	125	125	125	125	125	125	125
最大输出功率(连续) Max.output.Power(cont)(Kw)	27.7	34.9	34.7	34.5	34.9	31.2	28.8	25.3	22.2
重量 Weight(Kg)	19.5	20	20.4	20.5	21	22	23	24	25

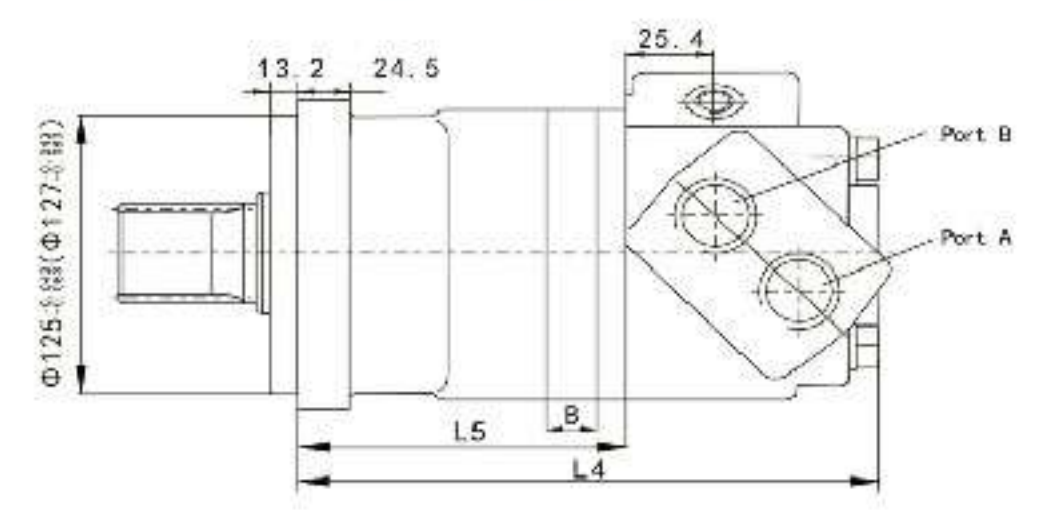
J形 (J Type)



D形 (D Type)



E形 (E Type)

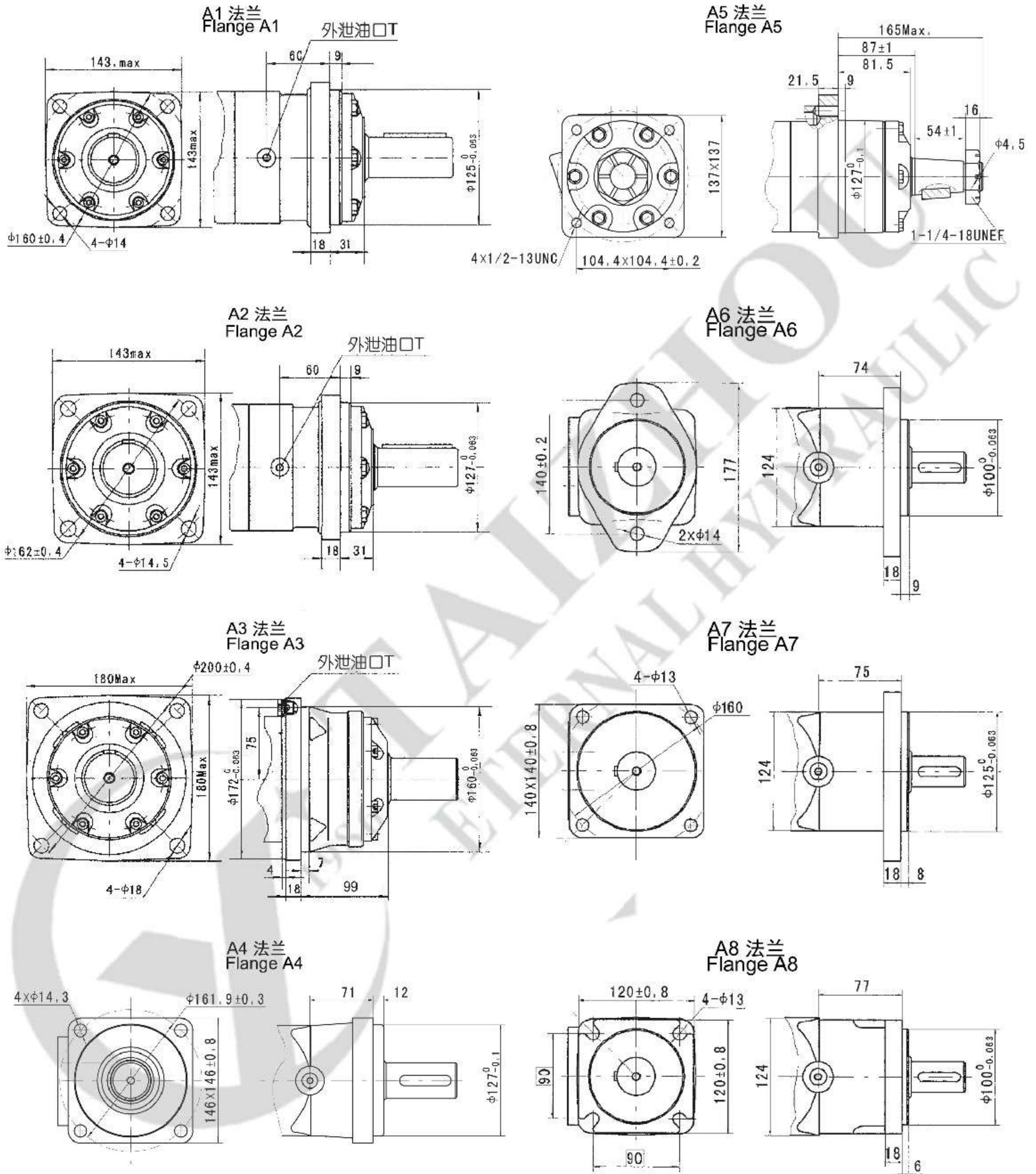


排量	195	245	310	390	490	625	800	985
B	21.7	27.3	34.5	43.4	54.4	69.1	89	108.9
L1	229.7	235.3	242.5	251.3	262.5	277	292.9	317
L2	135.1	140.7	148.1	156.7	167.7	182.5	198.5	222.3
L4	270.1	275.7	283	291.6	302.8	317.5	333.4	357.5
L5	150.1	155.7	163.1	171.7	182.9	197.5	213.5	237.3

L3:见下一页

马达标准旋向:
面对输出轴轴端, A油口进油, 马达顺时针旋转。
Standard Direction of The Motor Rotation:
CW---When A port pressurized, Viewed From the Shaft End.

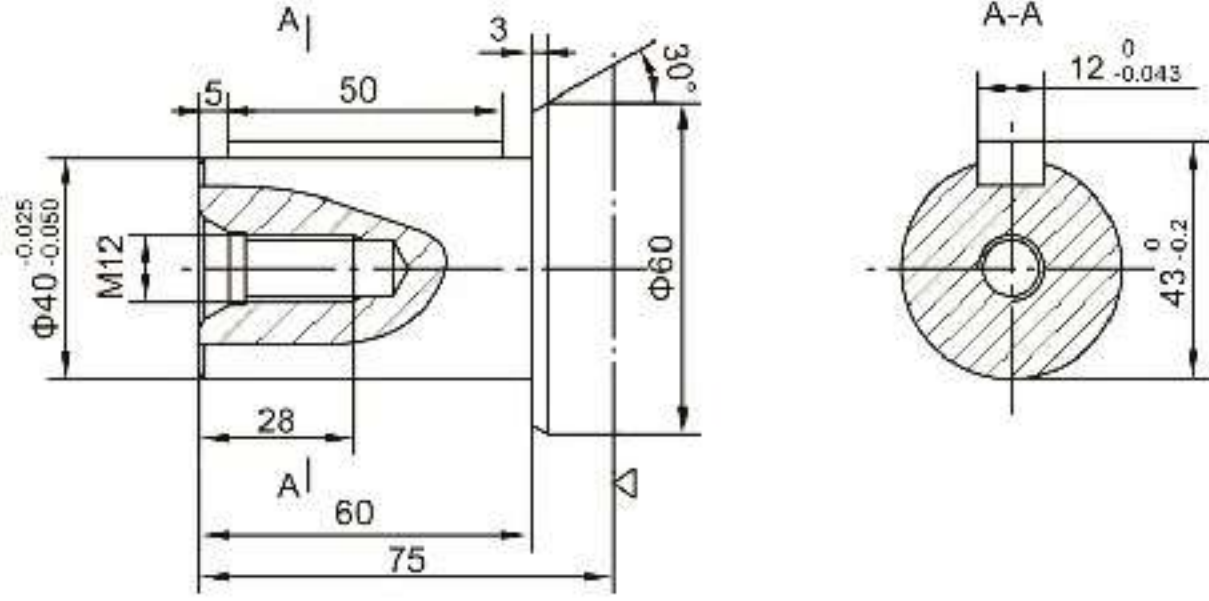
■ OMT马达安装法兰 Mounting Flange



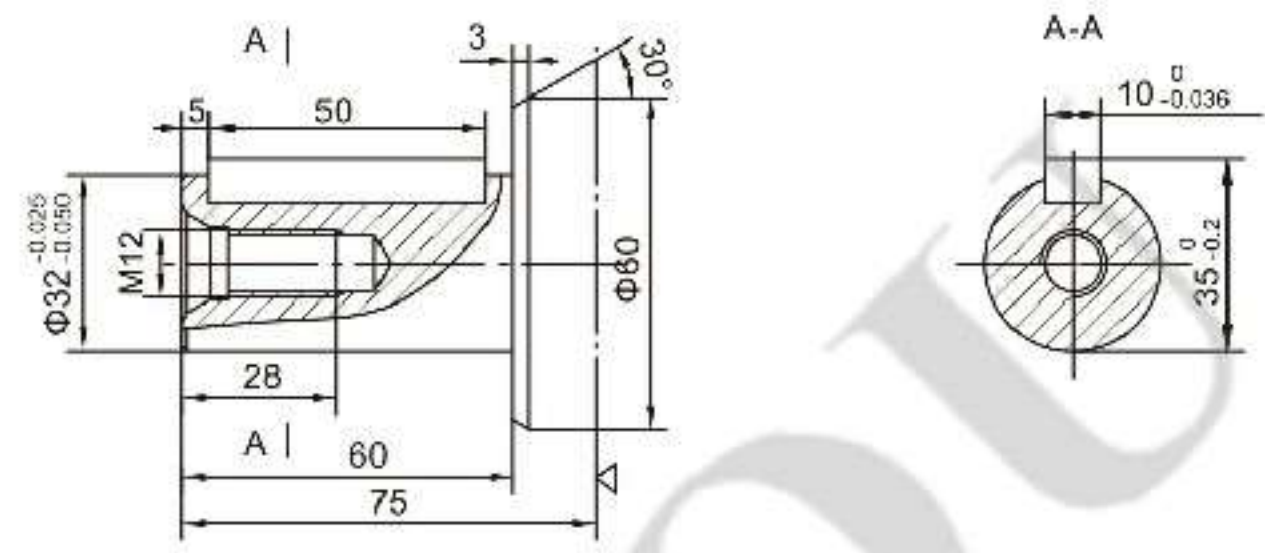
OMT外形安装尺寸-输出轴 Shaft Version

仅配A,A1,A7型 方法兰 Only match A,A1,A7 flange

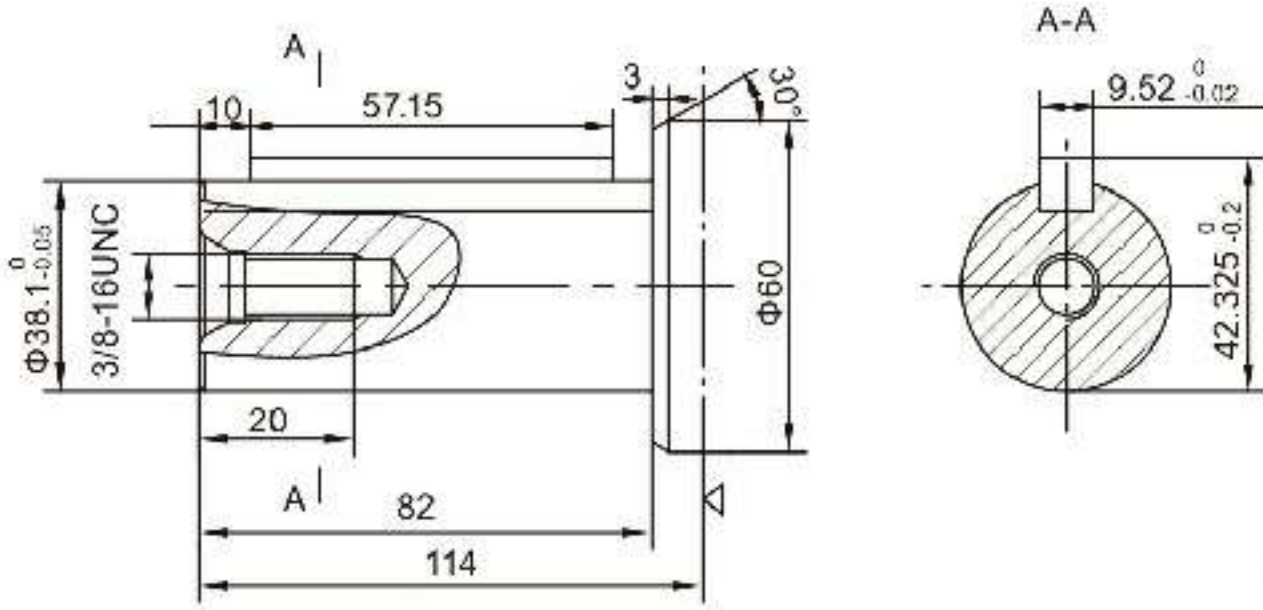
P1: $\Phi 40$ 平键轴, 平键 $12 \times 8 \times 50$
 $\Phi 40$ Cylindrical shaft, parallel key $12 \times 8 \times 50$



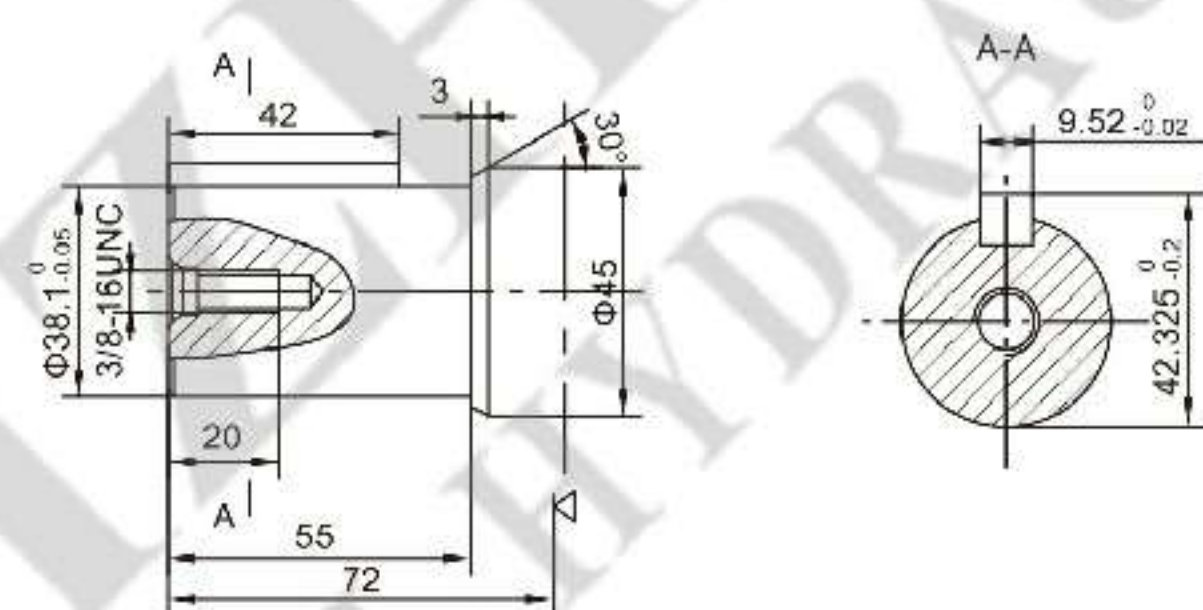
P2: $\Phi 32$ 平键轴, 平键 $10 \times 8 \times 50$
 $\Phi 32$ Cylindrical shaft, parallel key $10 \times 8 \times 50$



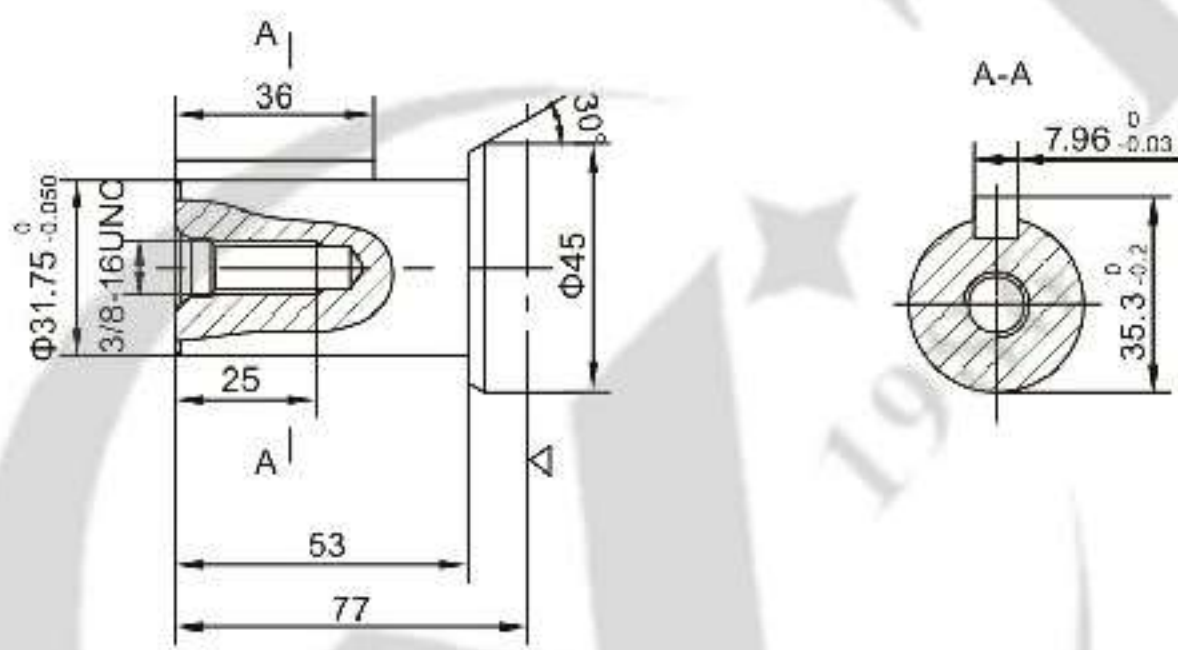
P3: $\Phi 38.1$ 平键轴, 平键 $9.525 \times 9.525 \times 57.15$
 $\Phi 38.1$ Cylindrical shaft, parallel key $9.525 \times 9.525 \times 57.15$



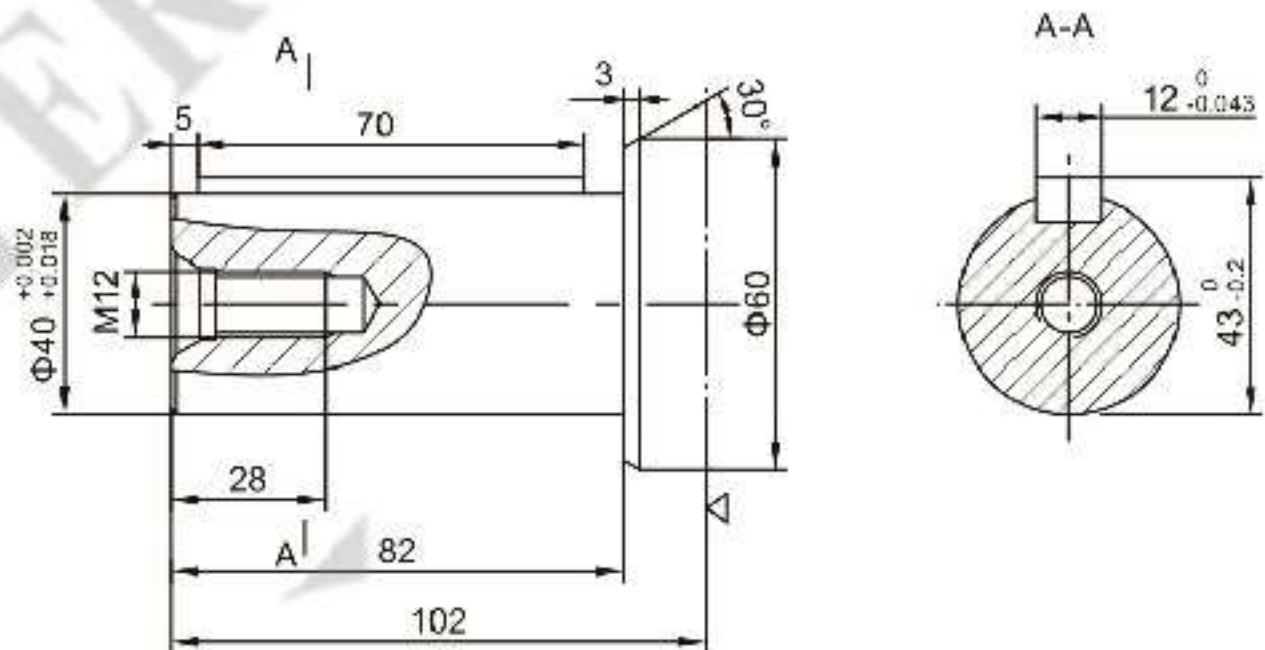
P4: $\Phi 38.1$ 平键轴, 平键 $9.525 \times 9.525 \times 42$
 $\Phi 38.1$ Cylindrical shaft, parallel key $9.525 \times 9.525 \times 42$



P5: $\Phi 31.75$ 平键轴, 平键 $7.96 \times 7.96 \times 36$
 $\Phi 31.75$ Cylindrical shaft, parallel key $7.96 \times 7.96 \times 36$



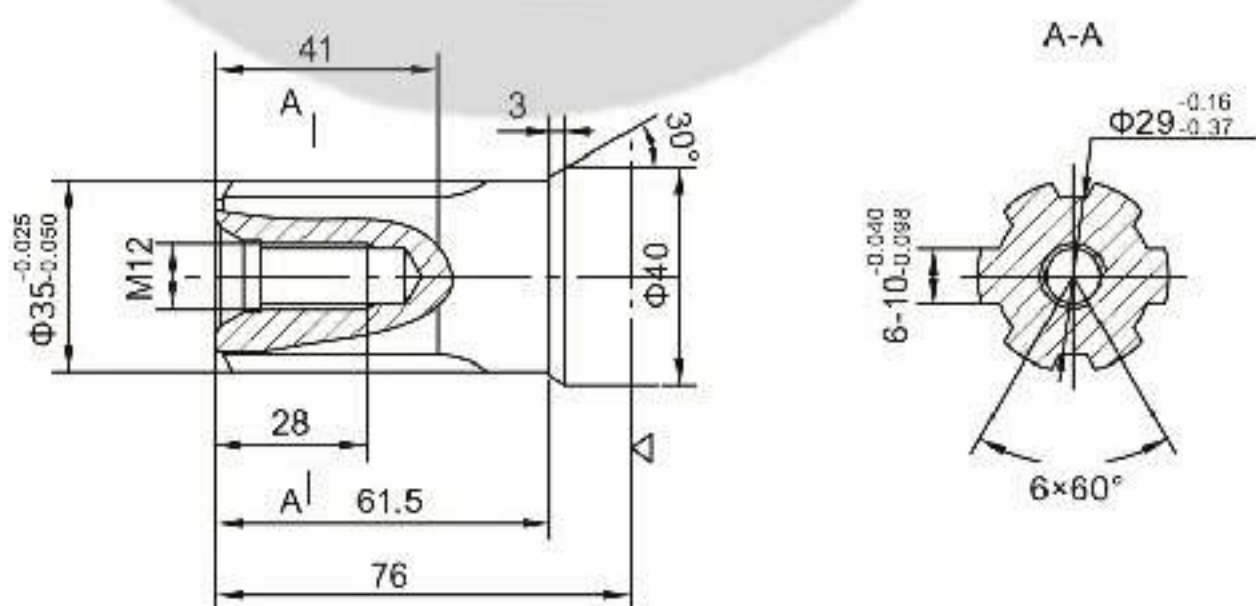
P6: $\Phi 40$ 平键轴, 平键 $12 \times 8 \times 70$
 $\Phi 40$ Cylindrical shaft, parallel key $12 \times 8 \times 70$



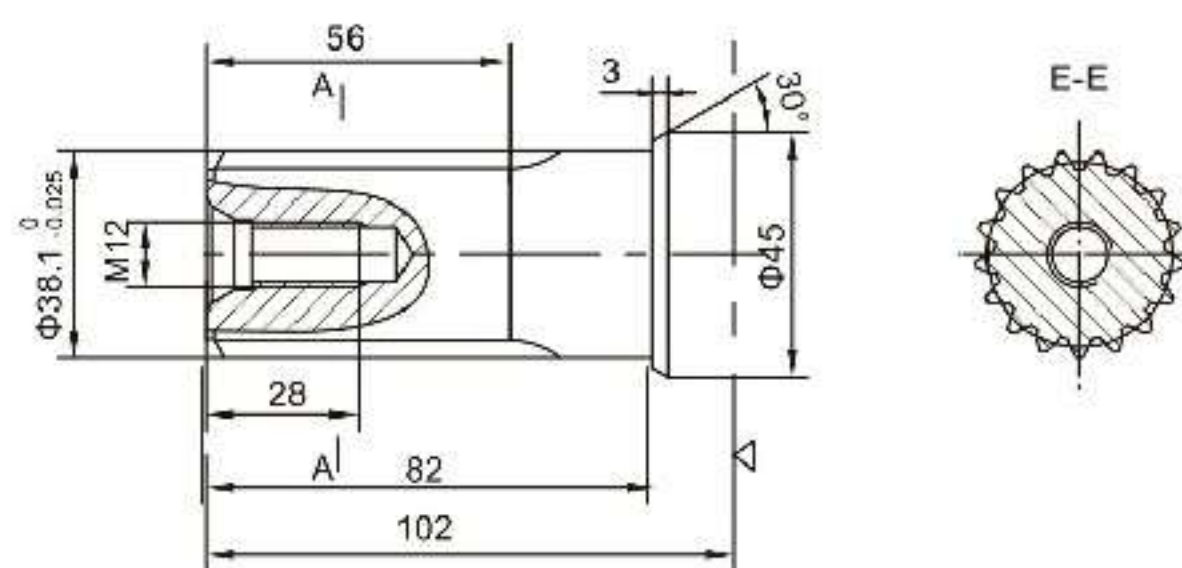
仅配A,A1,A7型 方法兰 Only match A,A1,A7 flange

H4: $\Phi 35$ 矩形花键轴, $6-35 \times 29 \times 10$
 $\Phi 35$ Splined shaft, $6-35 \times 29 \times 10$

H5: $\Phi 35$ 矩形花键轴, $6-35 \times 29 \times 6$
 $\Phi 35$ Splined shaft, $6-35 \times 29 \times 6$



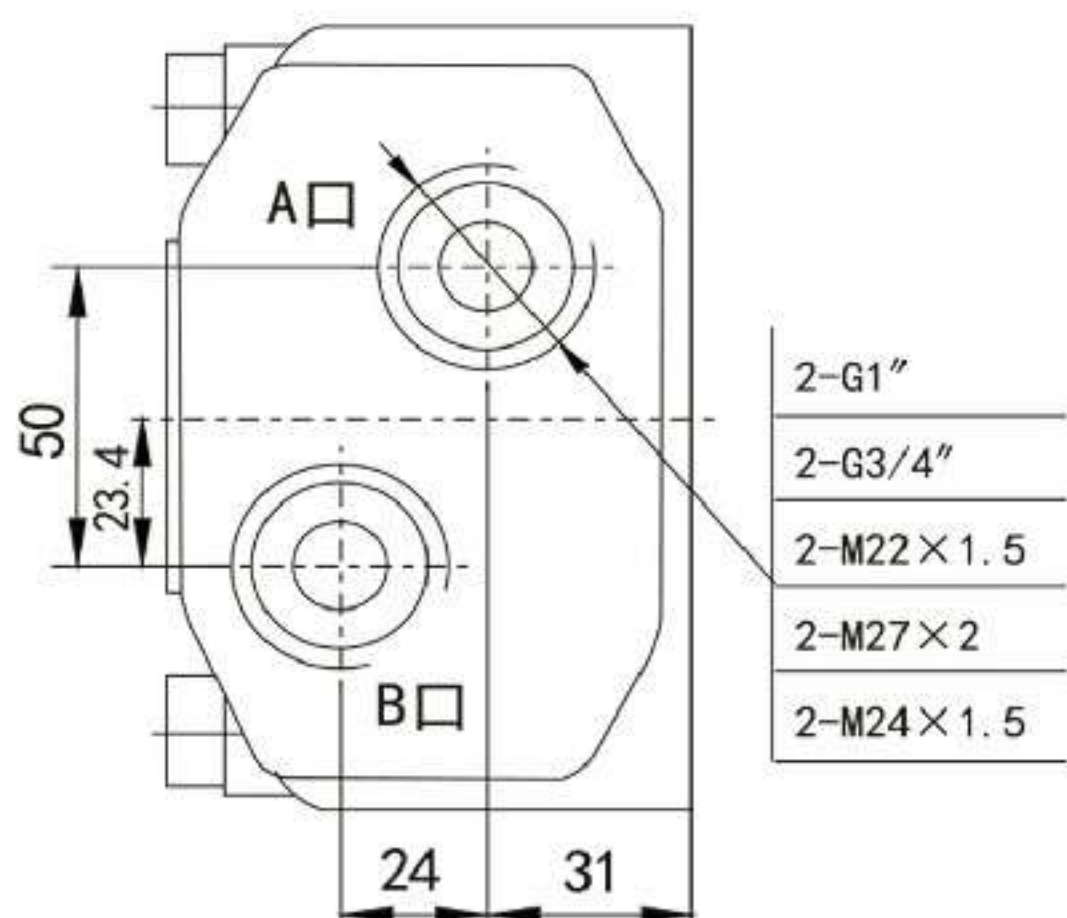
K3: $\Phi 38.1$ 渐开线花键轴 17-DP12/24 $a=30^\circ$
 $\Phi 38.1$ involute splined shaft 17-DP12/24 $a=30^\circ$



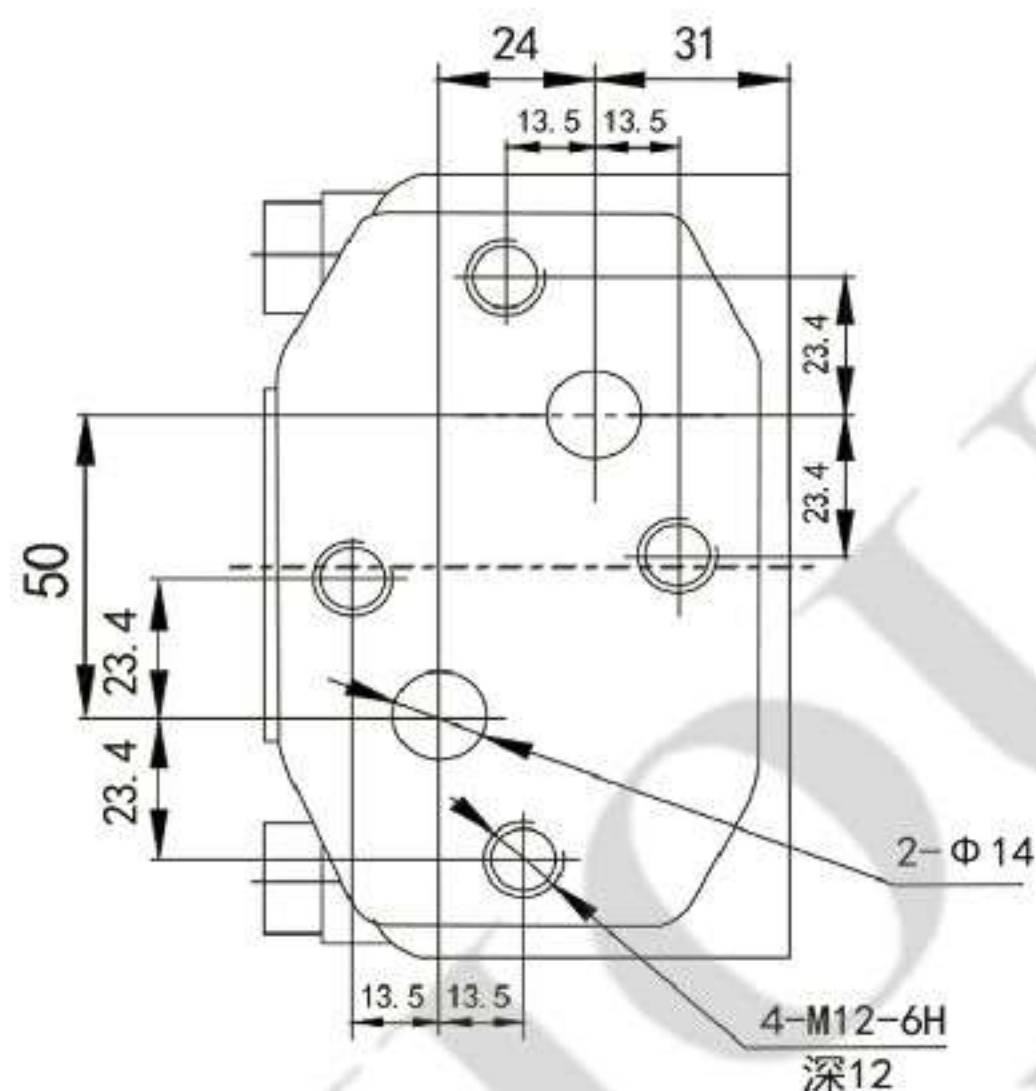
◁ : 马达安装面
Motor mounting surface

OMT马达连接尺寸 油口 Port

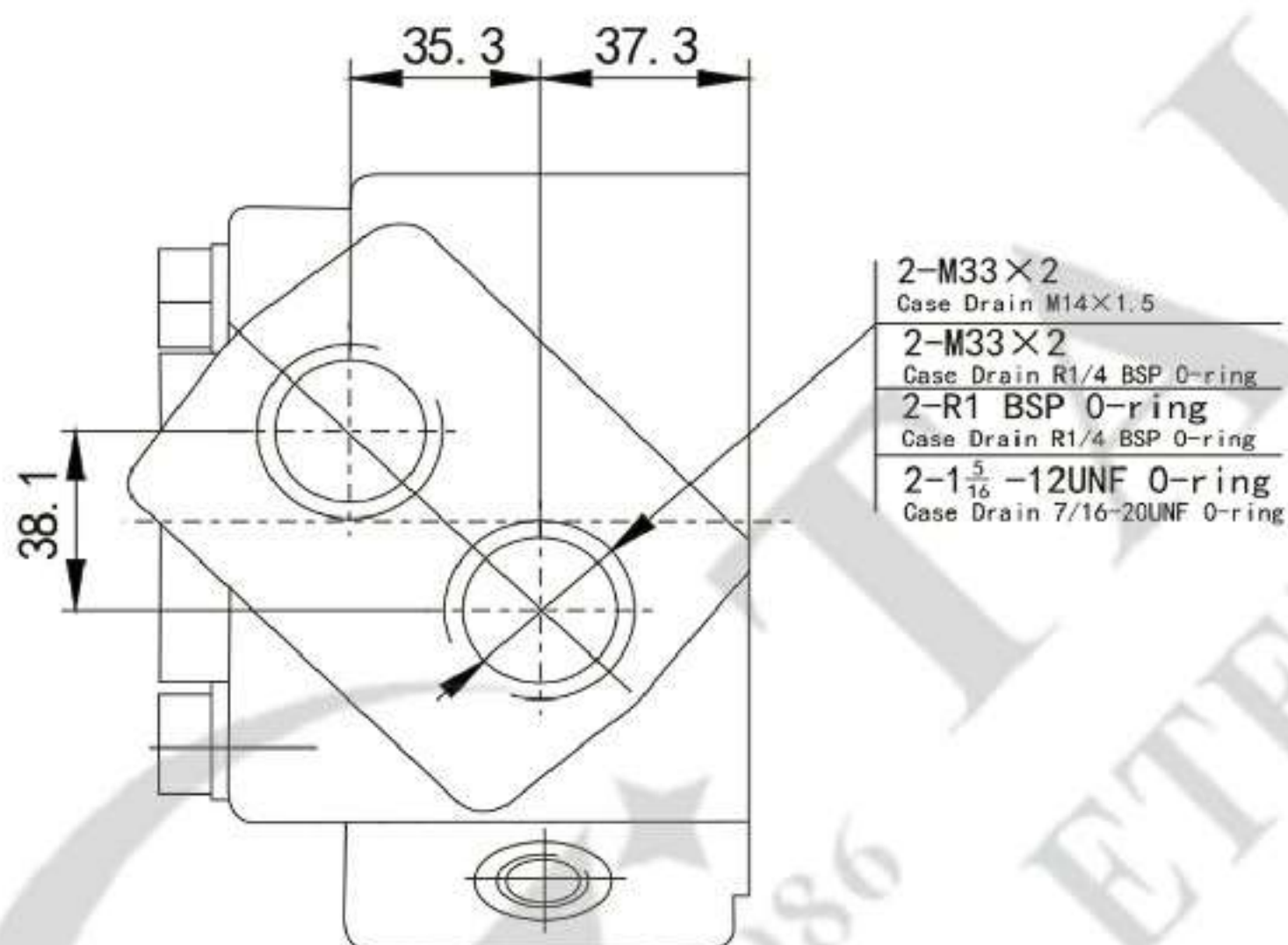
A:



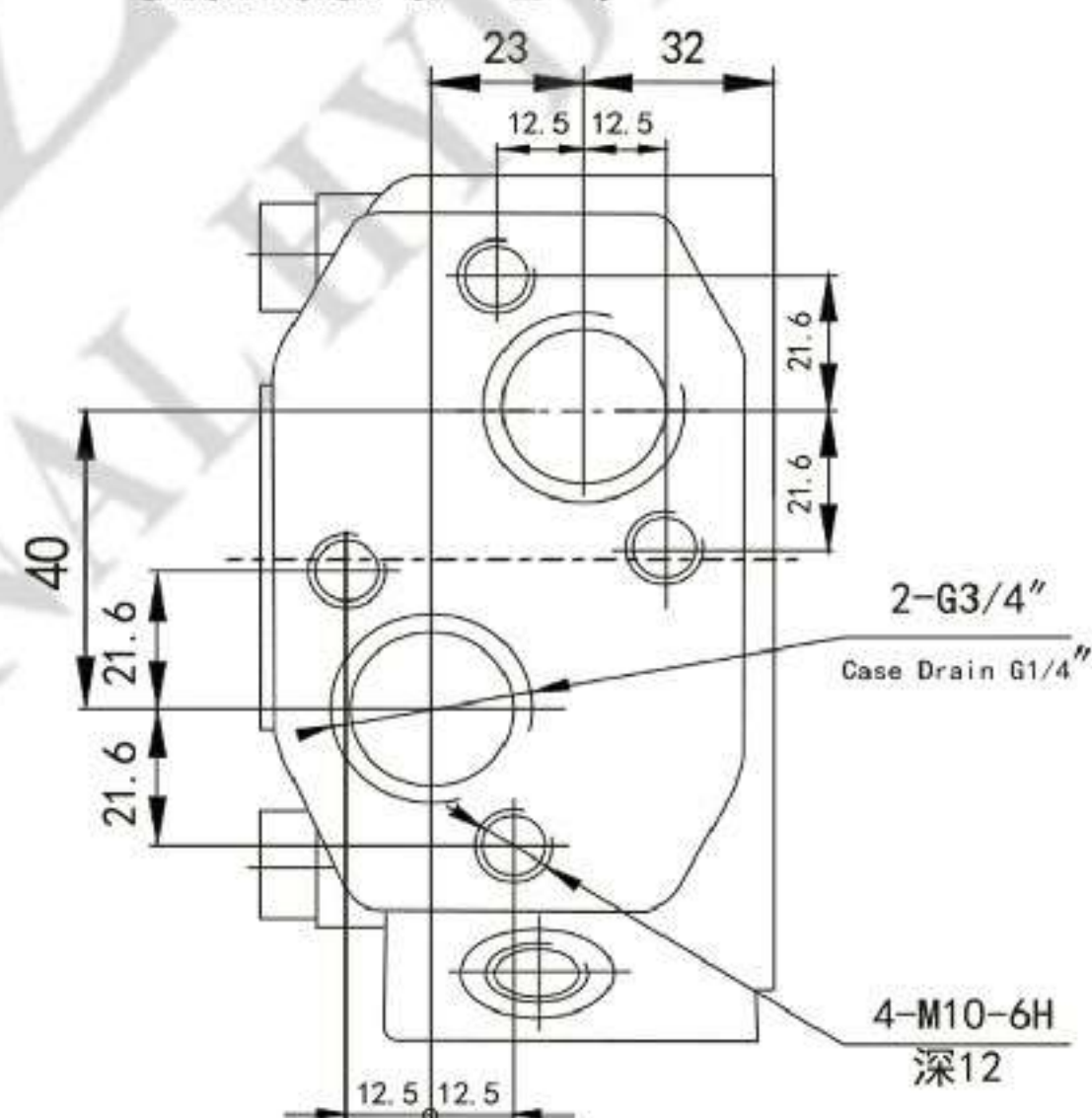
B:



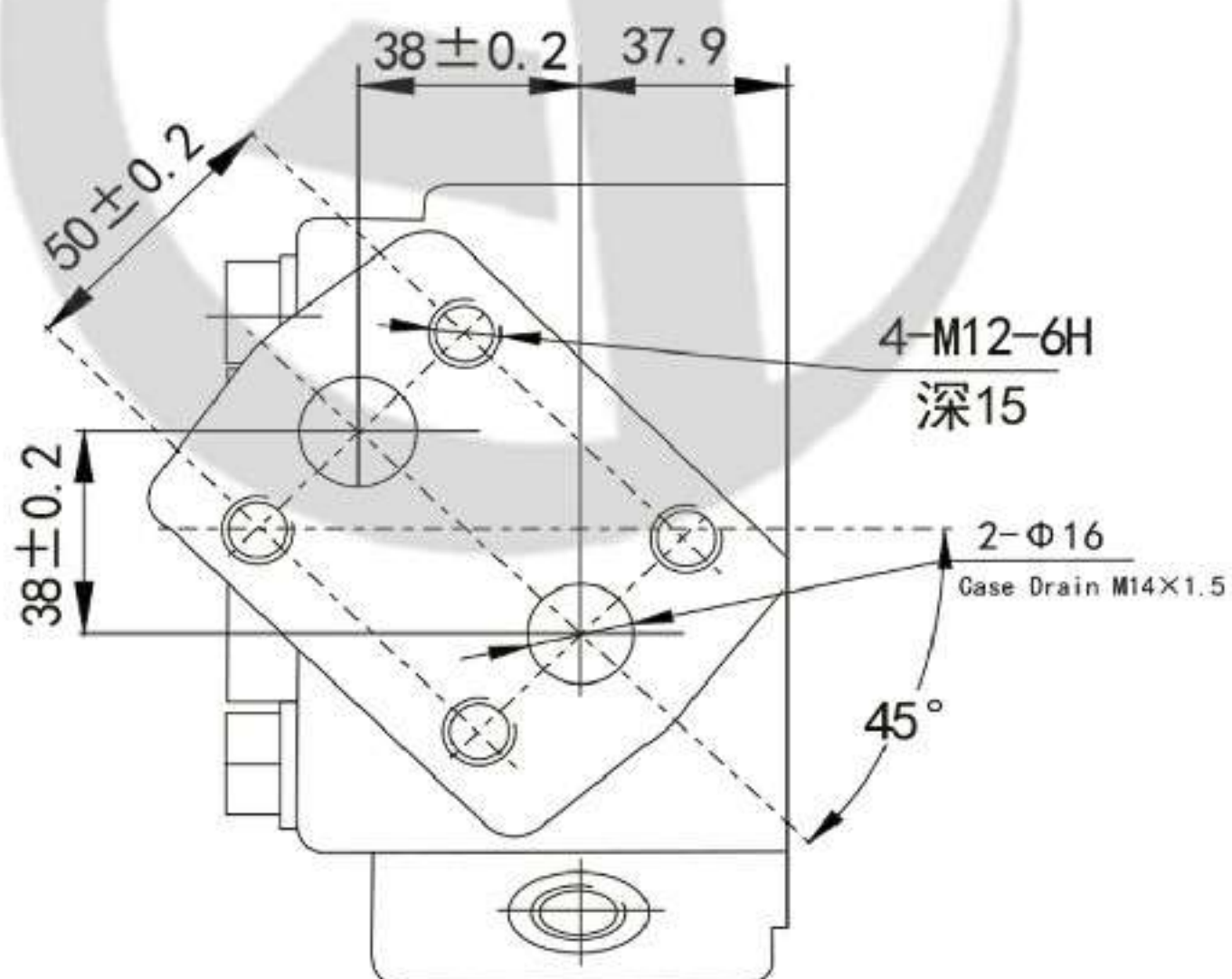
C:



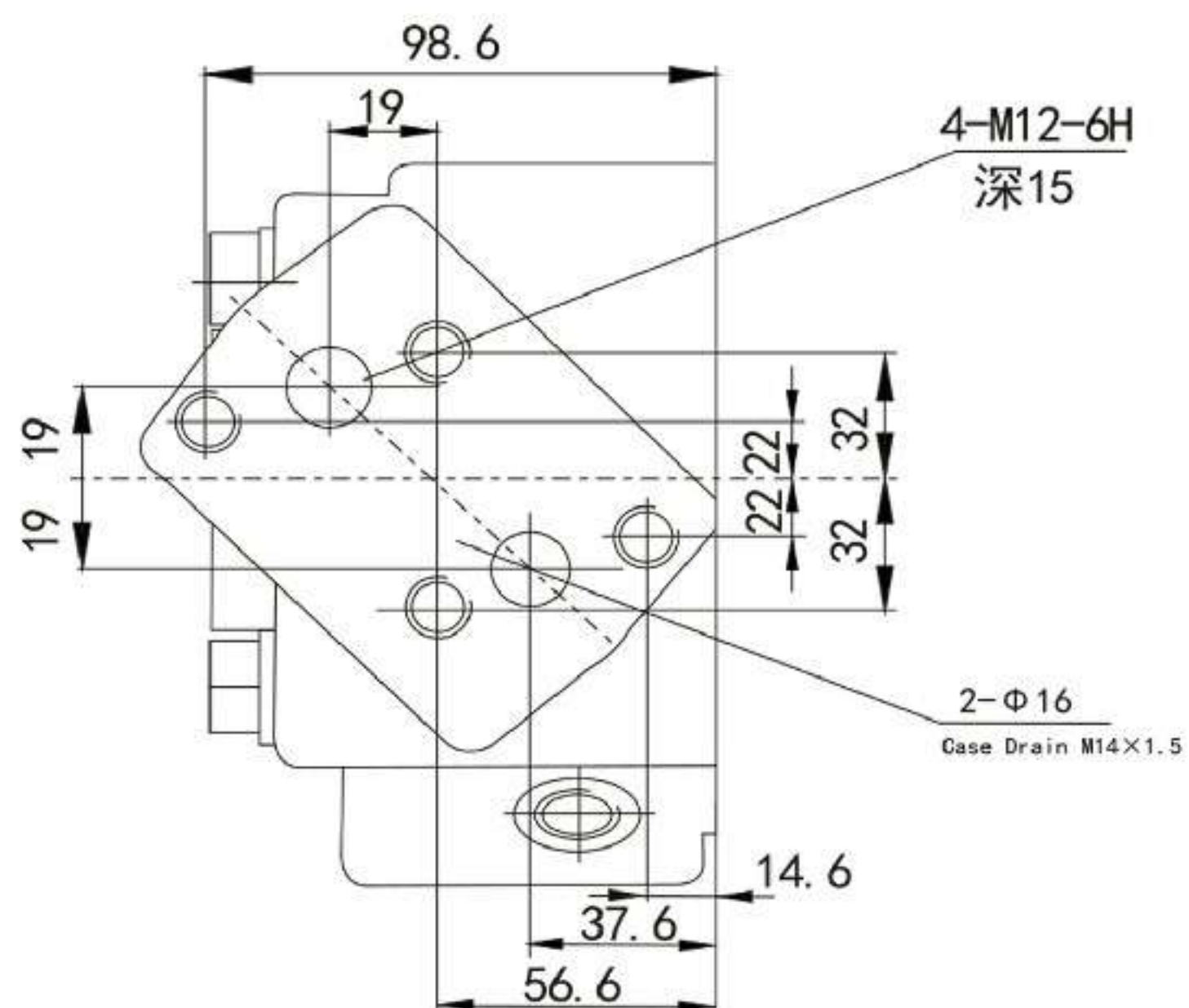
Standard D:



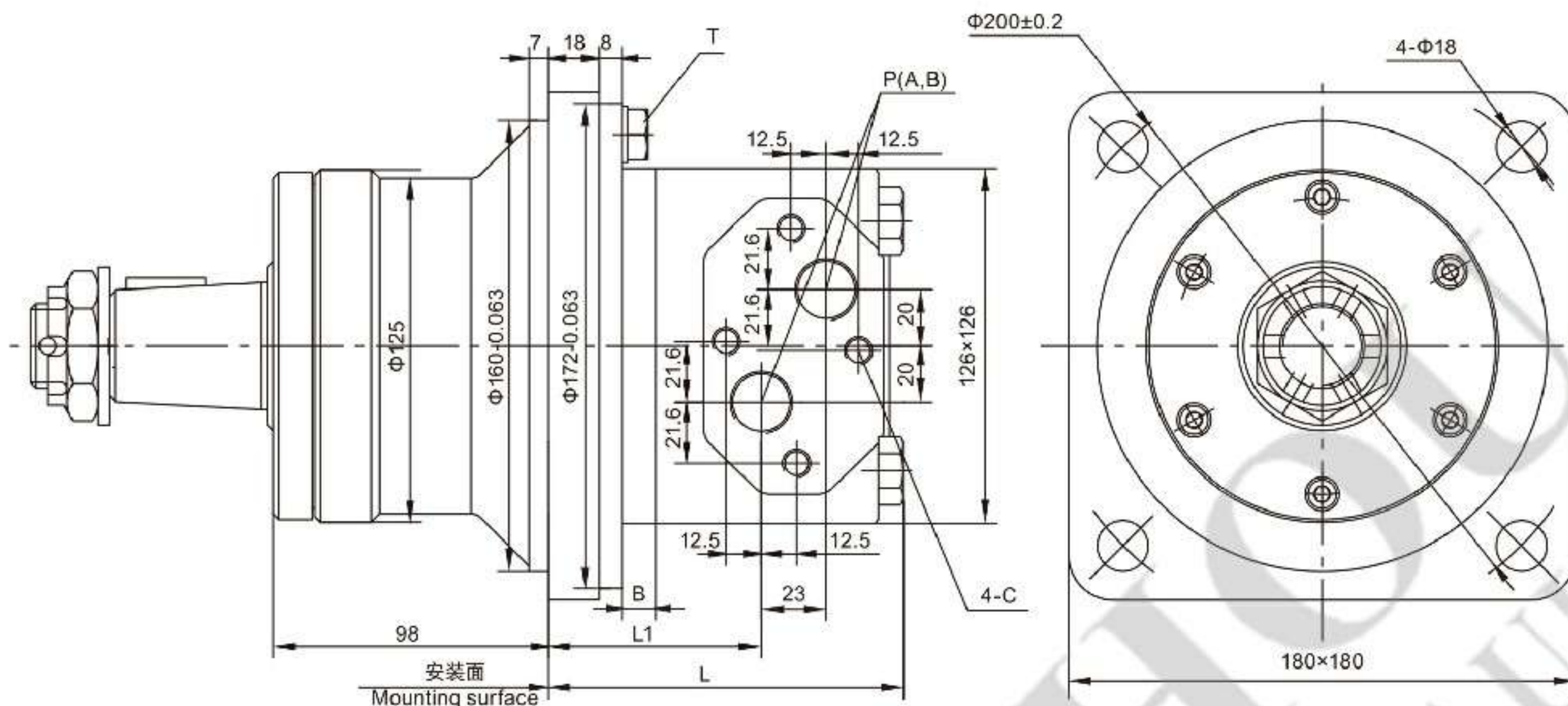
E:



F:



OMTW型号说明 Model Code



型号Type	OMTW-160	OMTW-200	OMTW-250	OMTW-320	OMTW-400	OMTW-500
L	127	131.5	138	145	154	172
L1	76.5	81	86.5	93.5	102.5	121
B	12	16.5	22	29	38	56.5

OMTW油口代号 Ports Code

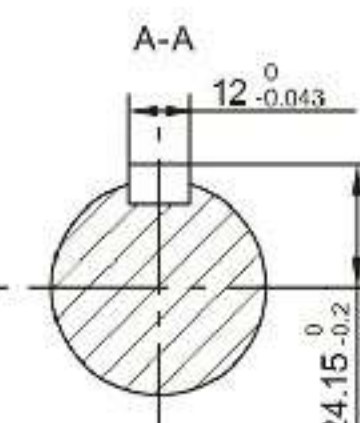
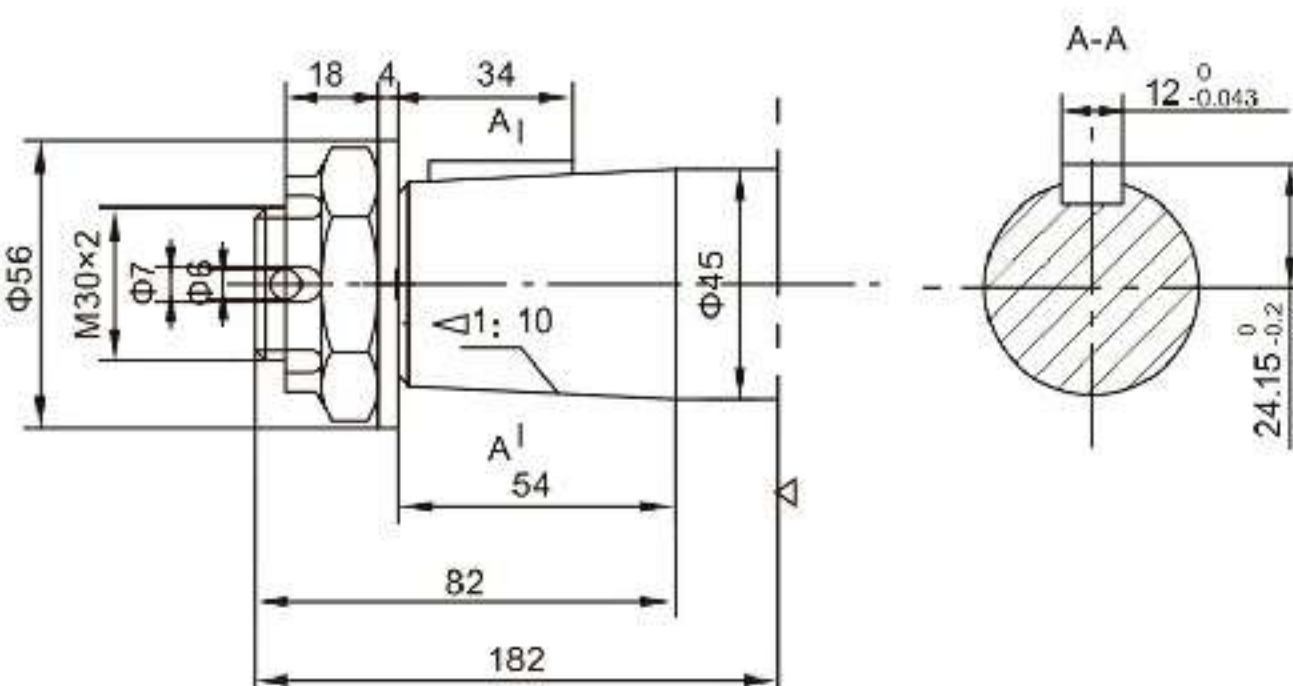
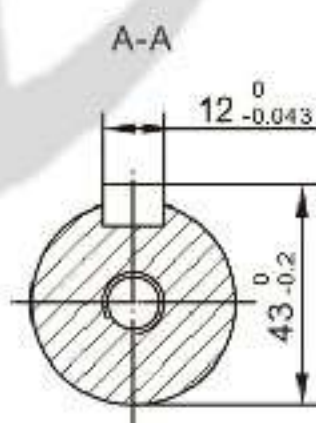
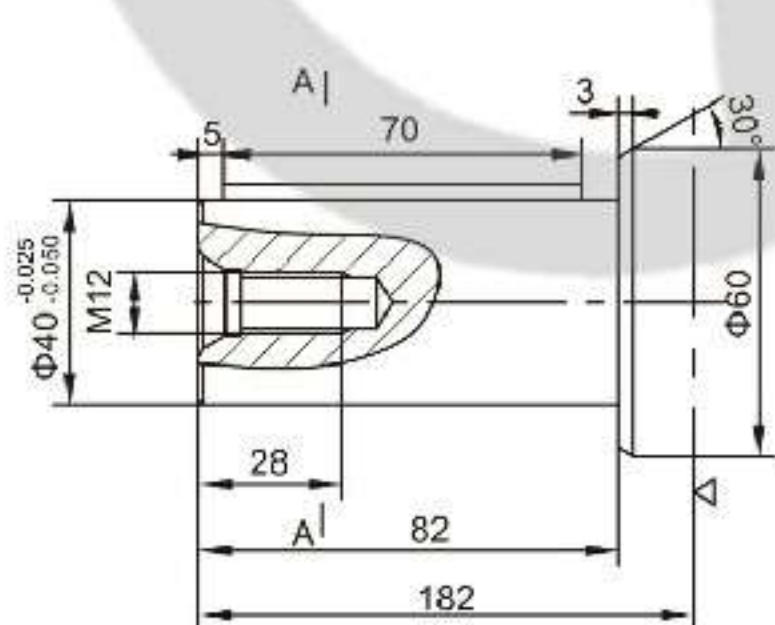
油口 Ports	P(A、B)(深deep)	C (深deep)	T (深deep)
代号 Code			
Y	G3/4 (15)	M10 (12)	G1/4(12)

P(A、B)—进出油口，C—油口面安装螺纹孔（—表示没有此螺纹孔），T—泄油口
 P(A、B)—Ports, C—Mounting Thread（—Indicates no this thread），T—Drain connetton

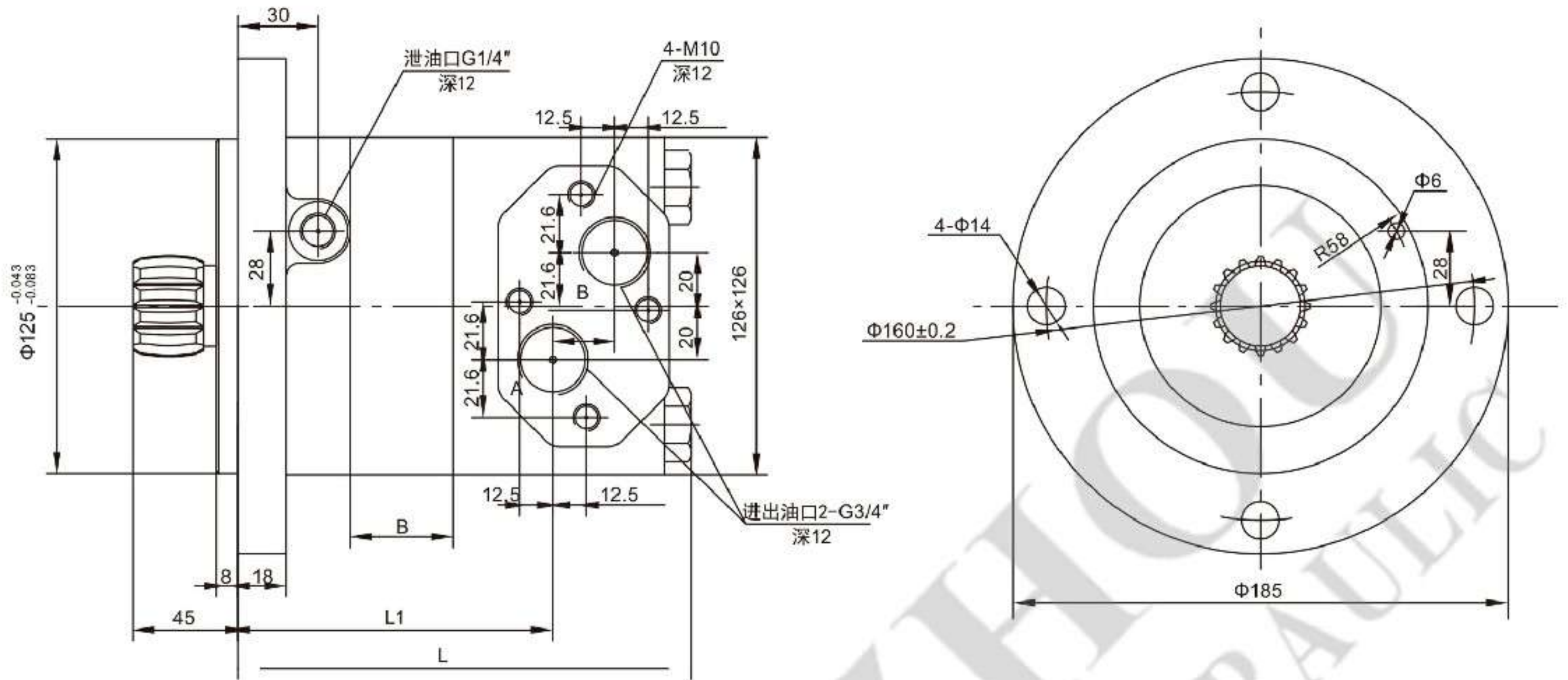
OMTW外形安装尺寸-输出轴 Shaft Version

P31: Φ40平键轴，平键12×8×70
 Φ40 Cylindrical shaft, parallel key 12×8×70

Z2: Φ45锥轴，锥度1:10，平键12×8×28
 Φ45 Tapered shaft, taper 1:10, parallel key 12×8×28



■ OMTS外形安装图 Installation



型号Type	OMTS-160	OMTS-200	OMTS-250	OMTS-320	OMTS-400	OMTS-500
L	144	148.5	154	161	170	188.5
L1	93.5	98	103.5	110.5	119.5	138
B	12	16.5	22	29	38	56.5

■ OMTS外形连接尺寸（连接尺寸供参考） Shaft Version

