



○ 产品简介/Production Introduction

本系列泵是专为低噪声工况而开发的高压高性能叶片泵，产品所有连接尺寸和内部配件均可与原装油研互换，具有结构合理、性能先进、效率高、噪声低、脉动小、可靠性好等特点，广泛应用于工程机械、矿山机械、橡塑机械、鞋革机械、压铸机械、金属切割机床及各类液压系统中。

PV2R Yuken type vane pump are developed basic on the original Yuken vane pump, the all connecting dimension and spare parts can be interchanged with original Yuken, with advanced structure and performance, higher efficiency, lower noise and ripple, longer life etc, are widely used in Construction Machinery, Mining Machinery, Rubber&Plastic machinery, Shoe Machinery, Die Casting Machinery, Metallurgical Machinery, Metal Cutting Machinery and all types hydraulic systems.

■ PV2R系列单泵 PV2R Series Single Pump

PV2R1	31	- F	-1	-R	A
系列号 Series No	公称排量 Displacement (ml/r)	安装形式 Mounting Type	轴伸形式 Shaft Extention	旋转方向 Rotation	出油口位置 Outlet Position
PV2R1	6,8,10,12,14,17 19,23,25,28,31	F:法兰安装 F: Flange Mounting	1: 大轴标准 1: Standard 2: 小轴 2: Minor Shaft 3: 特殊轴 3: Special Shaft	从轴端看(Viewed from Shaft end) 进油口朝上(Inlet port A is set as upper.)	
PV2R2	26,33,41,47,53,59 65,75			R: 正转 (标准) L: 反转	A-上方 (标准) B-下方 R-右方 L-左方
PV2R3	52,60,66,76,85,94 116,125,136,153			R: Right(Standard) L: Left	A: Upper(Standard) B: Bottom R: Right L: Left
PV2R4	136,153,184,200,237				

■ PV2R系列双泵 PV2R Series Double Pump

PV2R23	-59	-125	-F	-1	-R	E	A
系列号 Series No	公称排量 Displacement (ml/r)		安装形式 Mounting Type	轴伸形式 Shaft Extention	旋转方向 Rotation	出油口位置 Outlet Position	
	盖端泵 Cover end pump	轴端泵 Shaft end pump				从轴端看(Viewed from Shaft end) 进油口朝上(Inlet port A is set as upper.)	
PV2R12	6,8,10,12,14,17, 19,23,25,28,31	26,33,41,47,53, 59,65,75	F: 法兰 安装	1: 大轴标准 1: Standard	R:正转 (标准) R: Right (Standard) L: Left L: 反转	盖端泵 Cover end pump	轴端泵 Shaft end pump
PV2R13	6,8,10,12,14,17, 19,23,25,28,31	52,60,66,76,85, 94,116,125,136, 153	F: Flange Mounting	2: 小轴 2: Minor Shaft			
PV2R23	26,33,41,47,53, 59,65,75	52,60,66,76,85, 94,116,125,136, 153					

■ 技术参数 Technical Data

产品型号 Model	理论排量 Displacement (mL/r)	最高压力Max.Pressure(MPa)			允许转速Speed (r/min)		质量 Weight (kg)					
		高压用特定油 Special Oil	抗磨液压油 Antiwear Oil	普通液压油 Common Oil	最低Min.	最高Max.						
PV2R1-6	5.8	21	17.5	16	750	1800 (1200)	9					
PV2R1-8	8.0											
PV2R1-10	9.4											
PV2R1-12	12.2											
PV2R1-14	13.7											
PV2R1-17	16.6											
PV2R1-19	18.6											
PV2R1-23	22.7											
PV2R1-25	25.3											
PV2R1-28	28.1											
PV2R1-31	31.0											
PV2R2-26	26.6	21	17.5	14	600	1800 (1200)	18.5					
PV2R2-33	33.3											
PV2R2-41	41.3											
PV2R2-47	47.2											
PV2R2-53	52.5											
PV2R2-59	58.2											
PV2R2-65	64.7											
PV2R2-75*	74.6						20					
PV2R3-52	52.2	21	17.5	14	600	1800 (1200)	31					
PV2R3-60	59.6											
PV2R3-66	66.3											
PV2R3-76	76.4											
PV2R3-85	85											
PV2R3-94	93.6											
PV2R3-116	115.6	17.5	16				32					
PV2R3-125	122.2											#34
PV2R3-136	136											
PV2R3-153	153											
PV2R4-136	136.0	17.5	17.5	14	600	1800	75					
PV2R4-153	153.0											
PV2R4-184	184.0											
PV2R4-200	201.0											
PV2R4-237	237.0											

注：

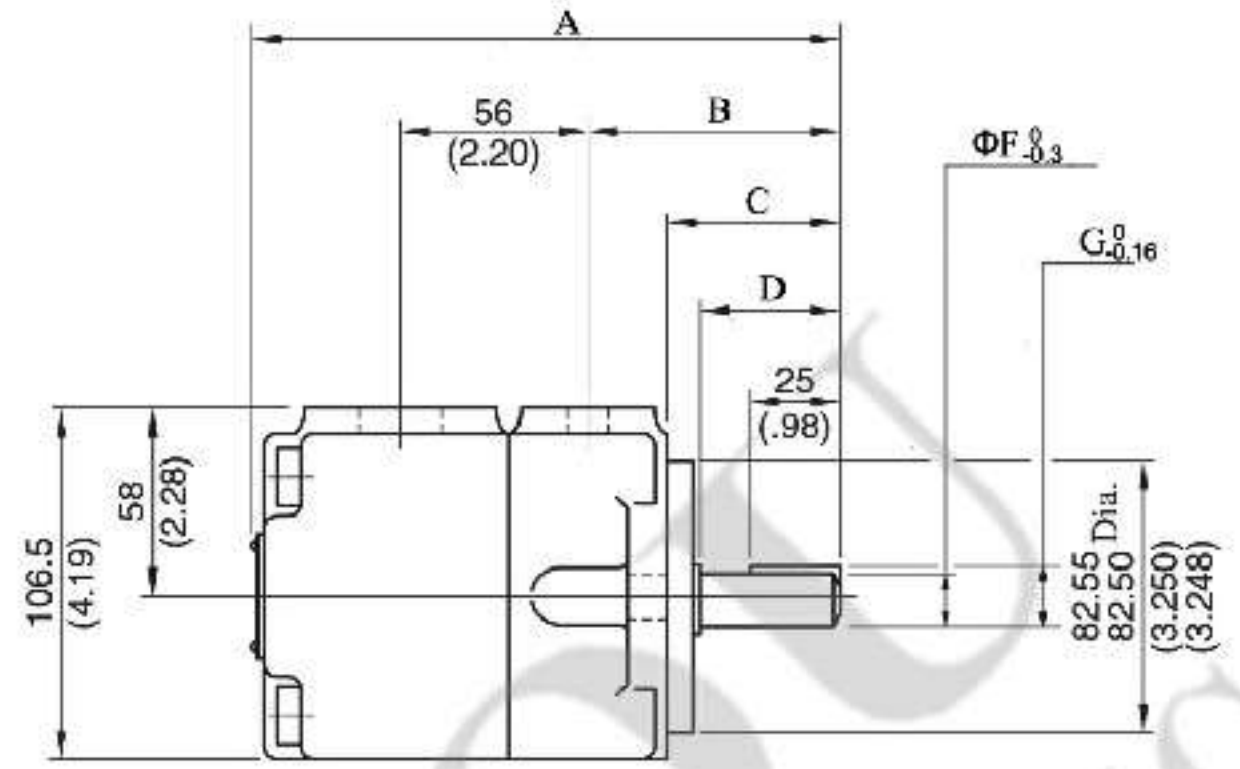
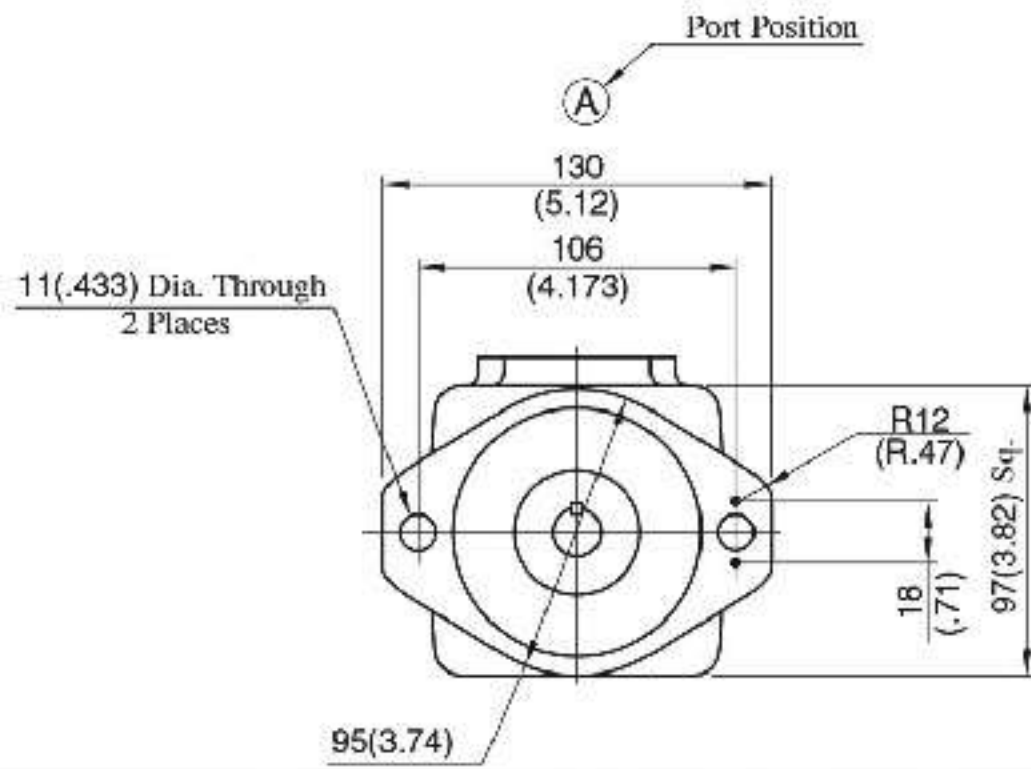
- 1.公称排量“6”、“8”泵，压力超过16Mpa使用时，转速不低于1450r/min.
- 2.对于严格要求低噪声的场合，建议工作转速在1000r/min，最高工作压力在12-14Mpa.
- 3.有*处为PV2R2/3-W组拓展规格，有#处为PV2R3-W组泵体加长10mm，安装尺寸相同，接受特殊订货.
- 4.驱动功率近似计算：泵的排量(ml/r)X电机转速(r/min)X工作压力(Mpa)/49000，计算结果单位为KW.

Notes:

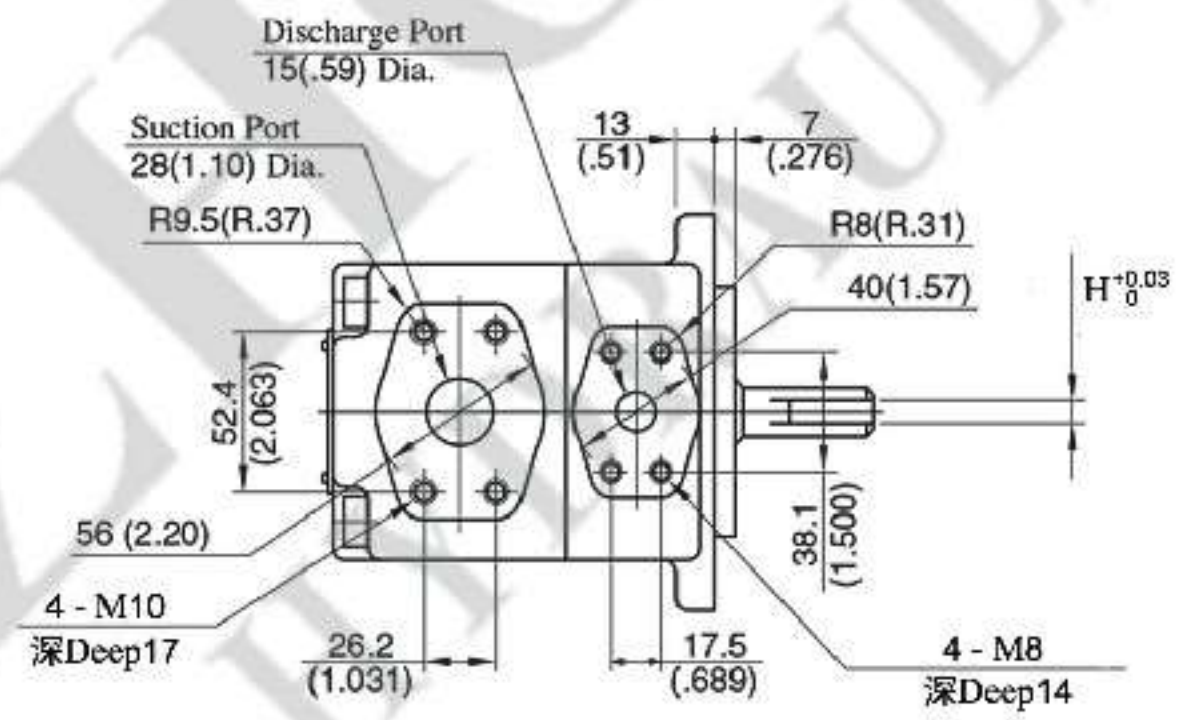
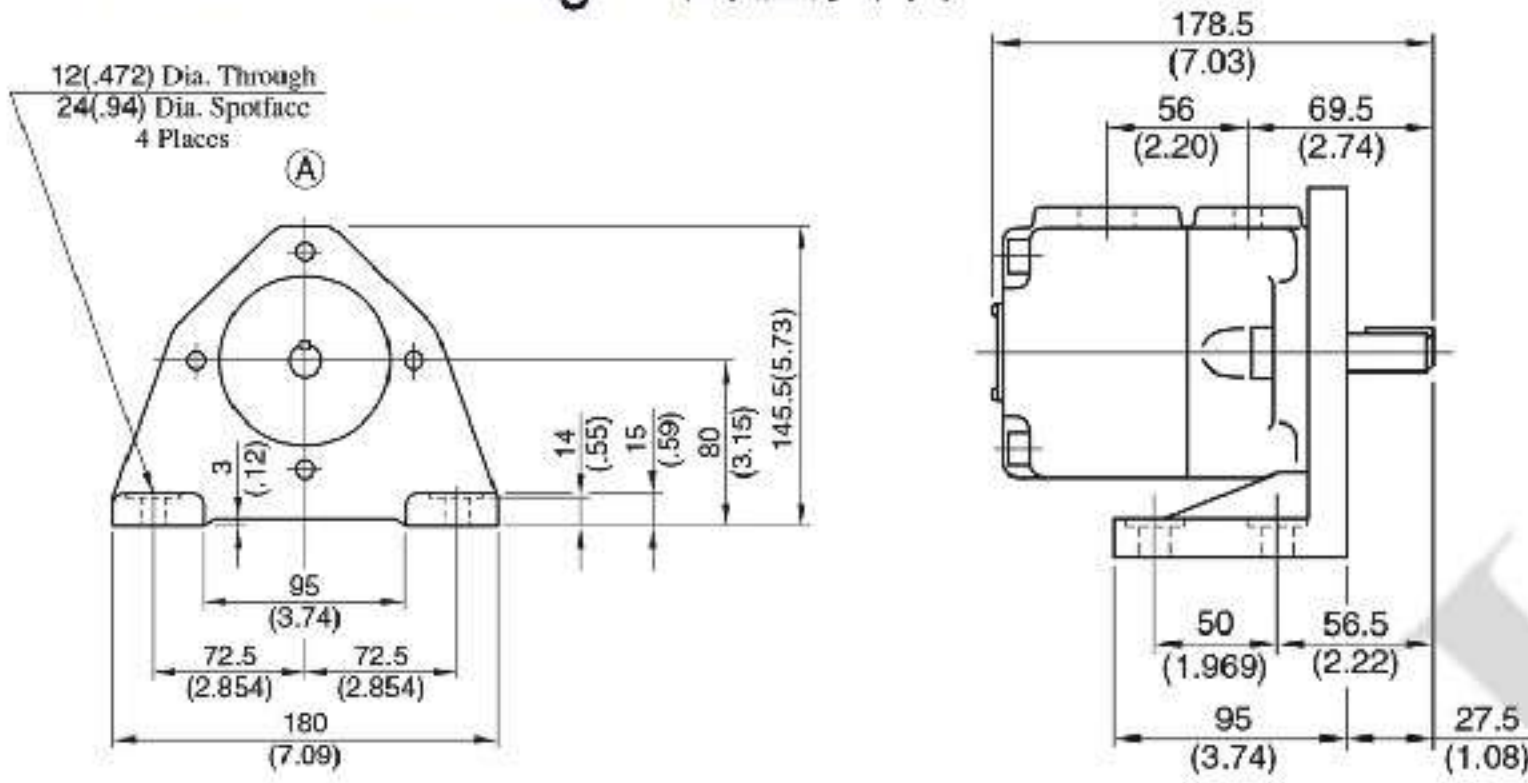
1. Regarding the pumps with 6ml/r and 8ml/r displacement, the speed should be less than 1450r/min if the working pressure is over 16 Mpa.
2. The pumps are recommended to work with 1000r/min if the condition requires lower noise.
3. The pump with the mark * belong to the extension specification of PV2R2-W group, the mark # belong to the extension specification of PV2R3-W group, with 10mm longer body, same connecting dimension for special order.
4. The formula of driving power pump: Displacement(ml/r) X Electric motor' s speed (r/min) X Working Pressure (Mpa) / 49000, Unit is KW.

PV2R1- Flange Mtg. (法兰安装)

轴伸形式 Shaft extension form	A	B	C	D	F	G	H
1	178.5	69.5	44.5	36	19.05	21.24	4.76
2	184	75	50	41	15.88	17.68	3.97



PV2R1- Foot Mtg. (脚座安装)

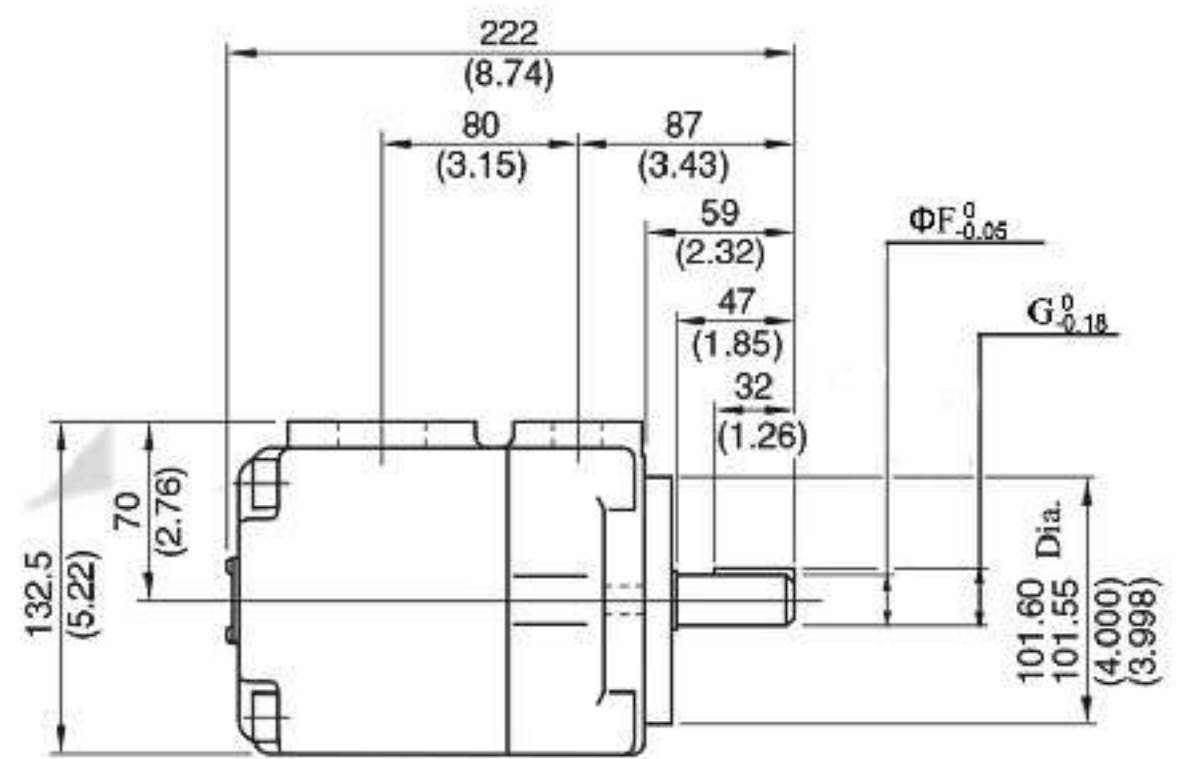
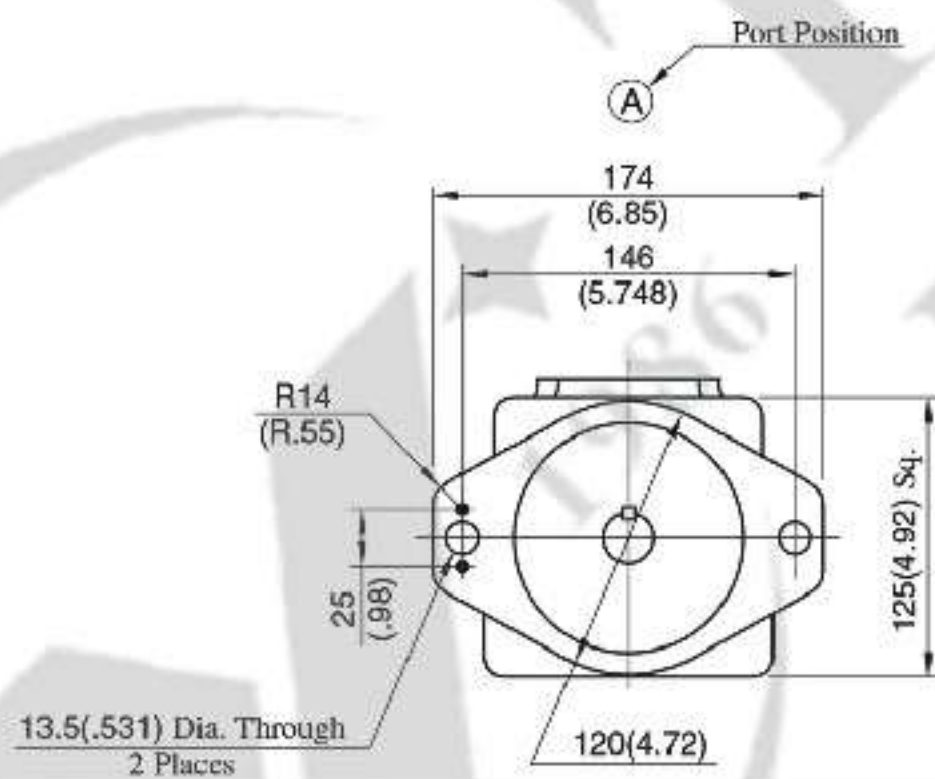


For other dimensions, refer to "Flange Mtg.".

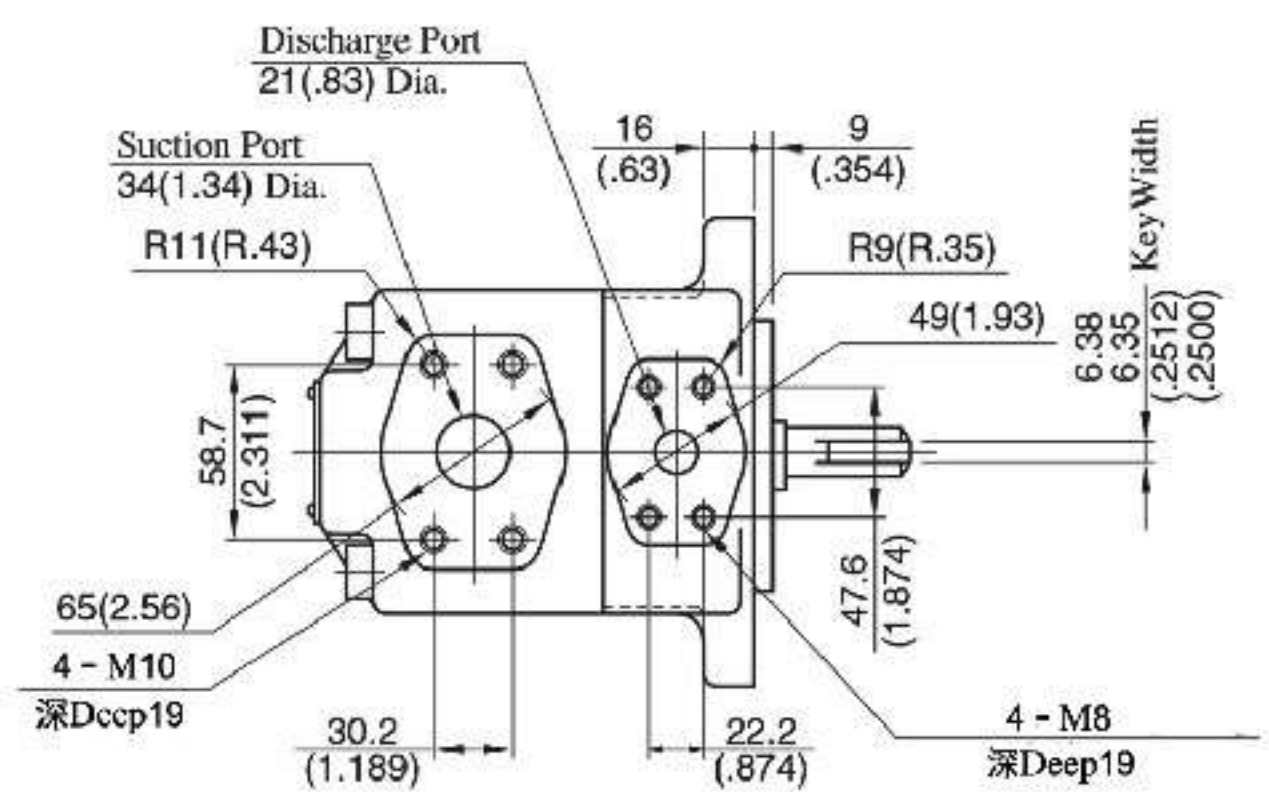
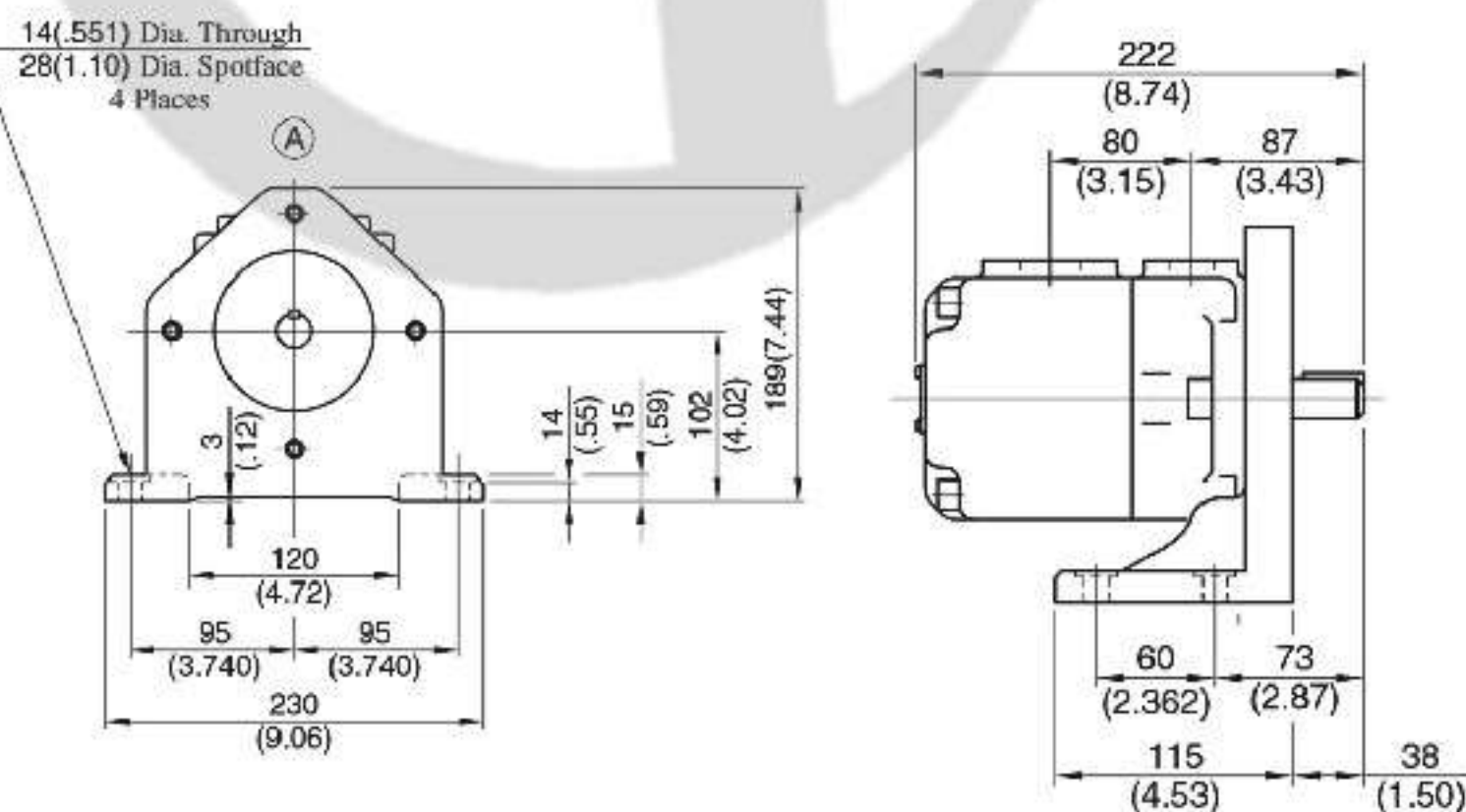
DIMENSIONS IN MILLIMETRES (INCHES)

PV2R2- Flange Mtg. (法兰安装)

轴伸形式 Shaft extension form	F	G
1	25.4	28.18
2	22.23	25.01



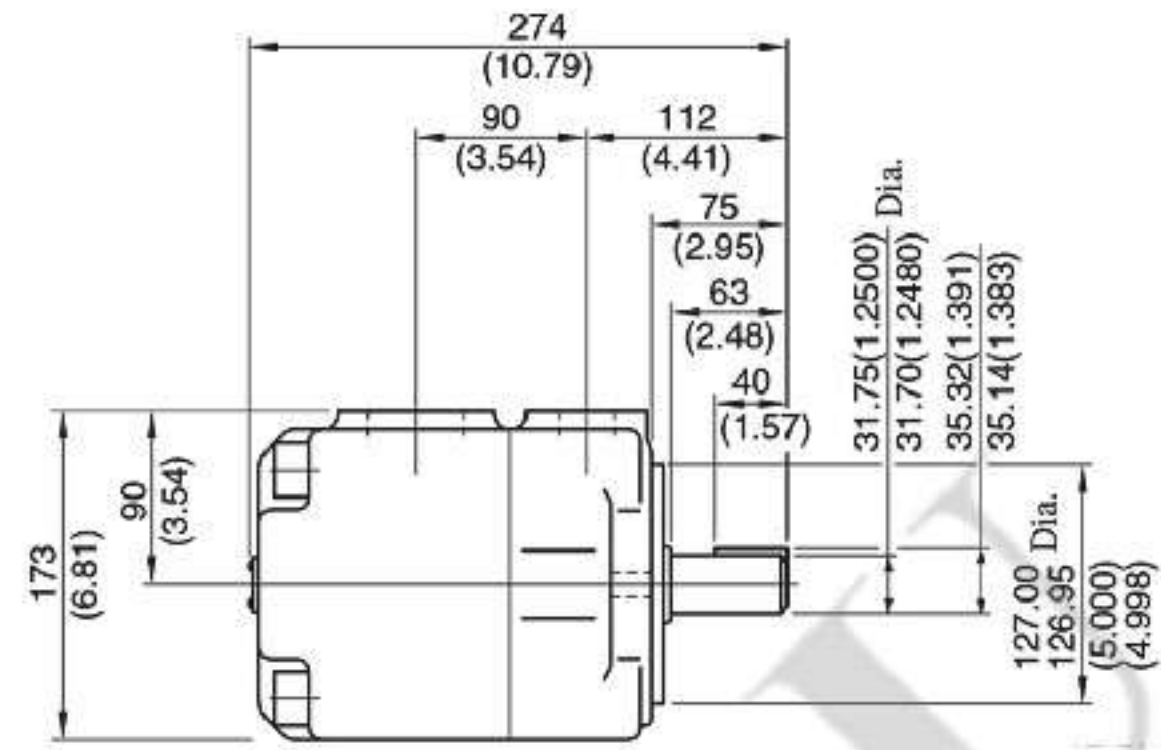
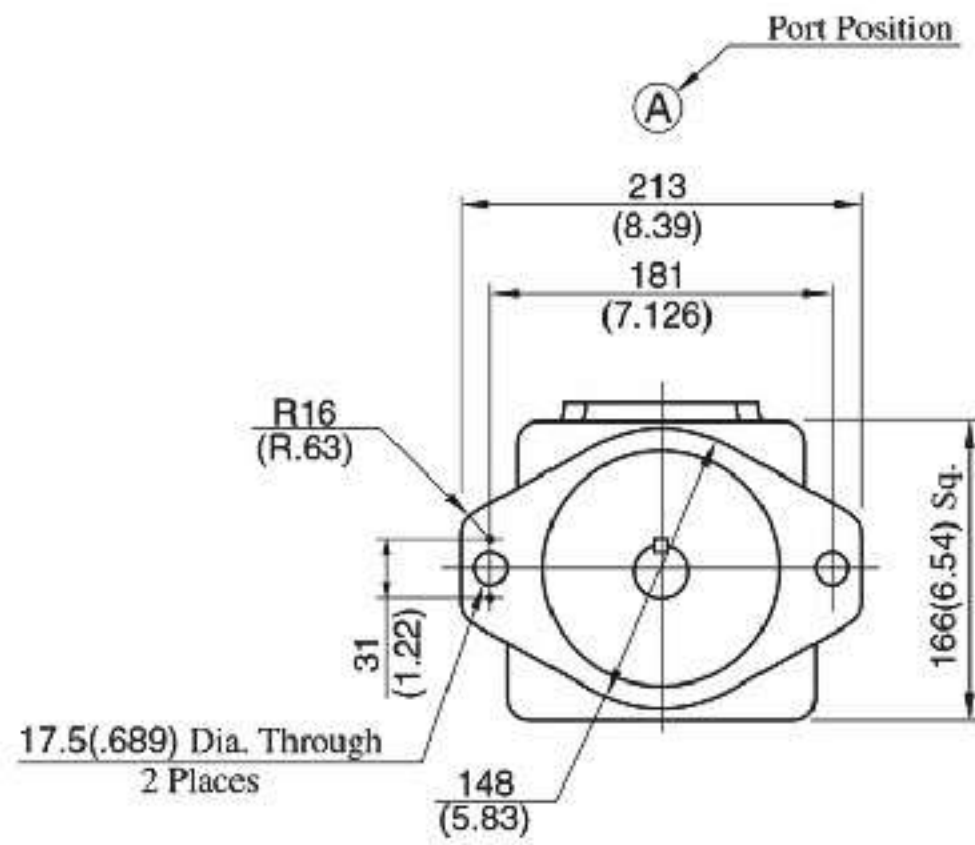
PV2R2- Foot Mtg. (脚座安装)



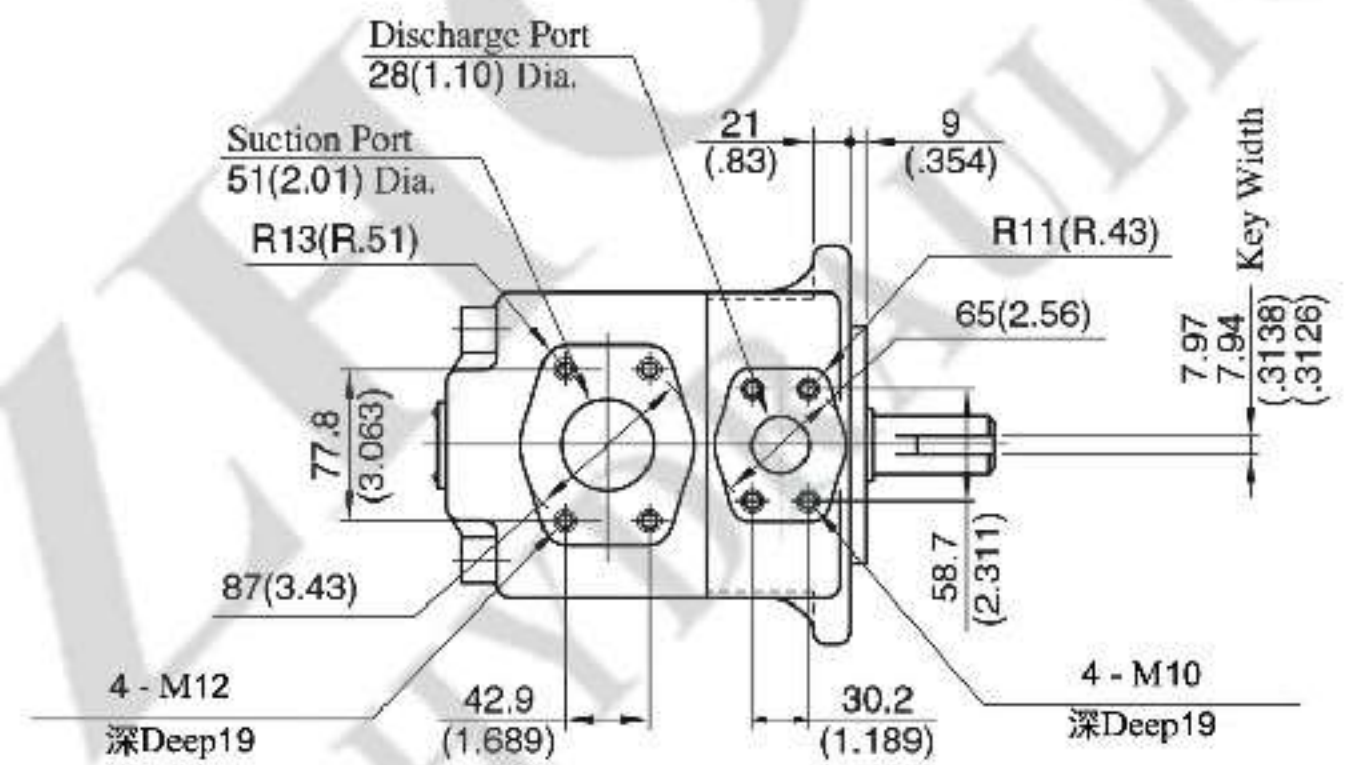
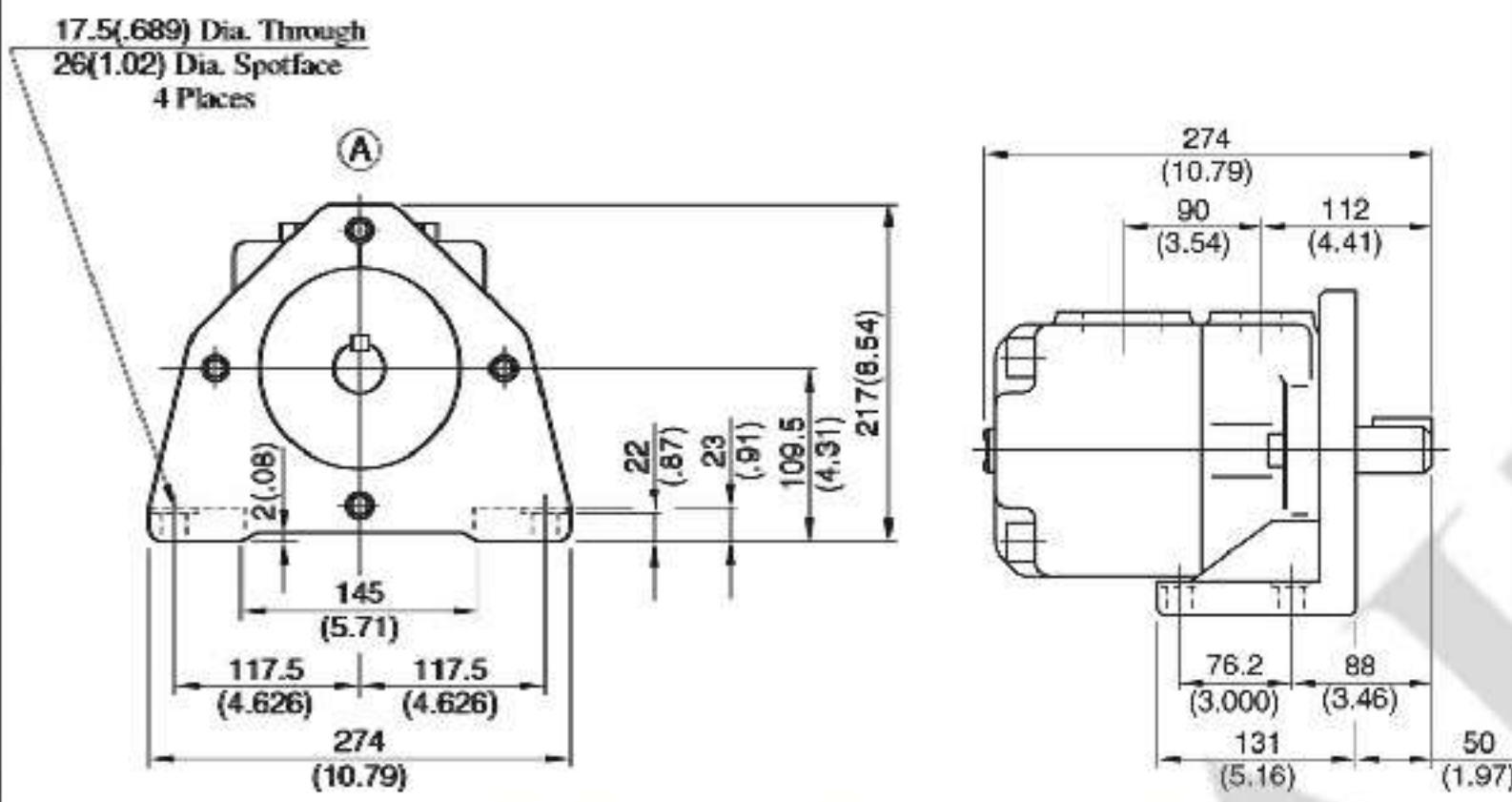
For other dimensions, refer to "Flange Mtg.".

DIMENSIONS IN MILLIMETRES (INCHES)

PV2R3- Flange Mtg. (法兰安装)



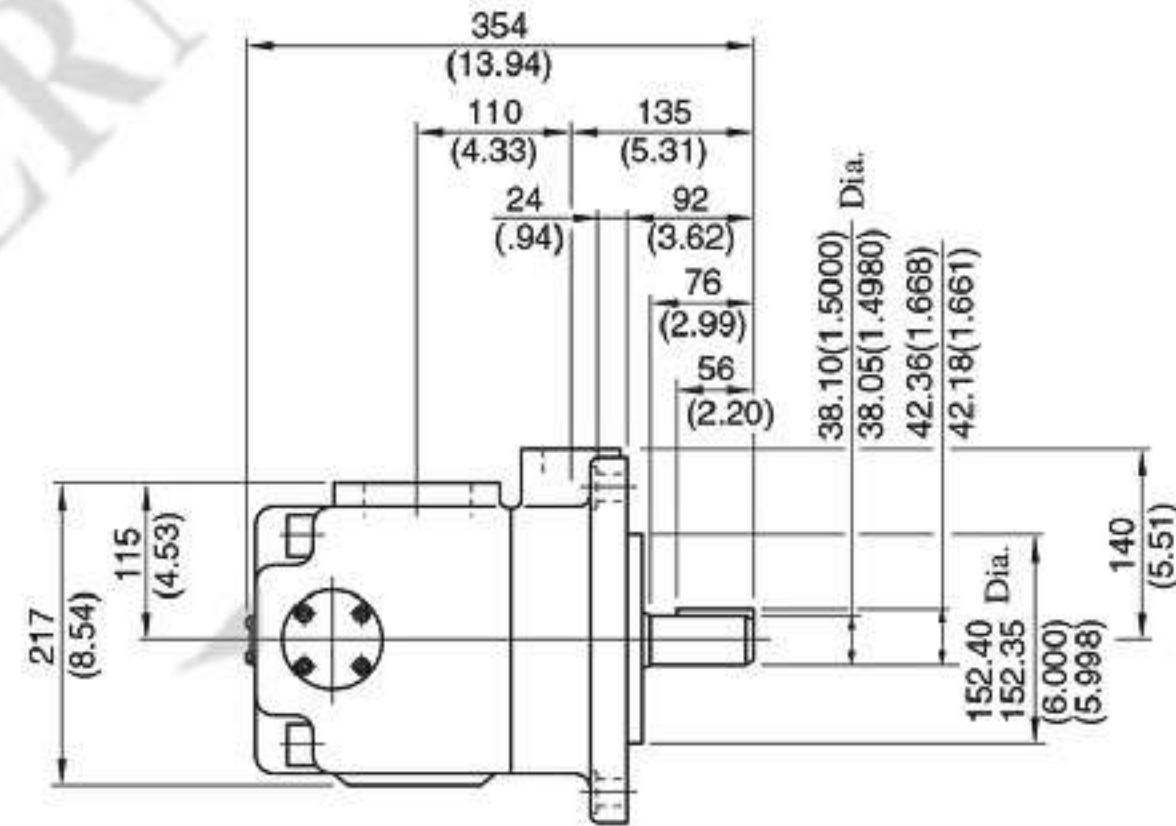
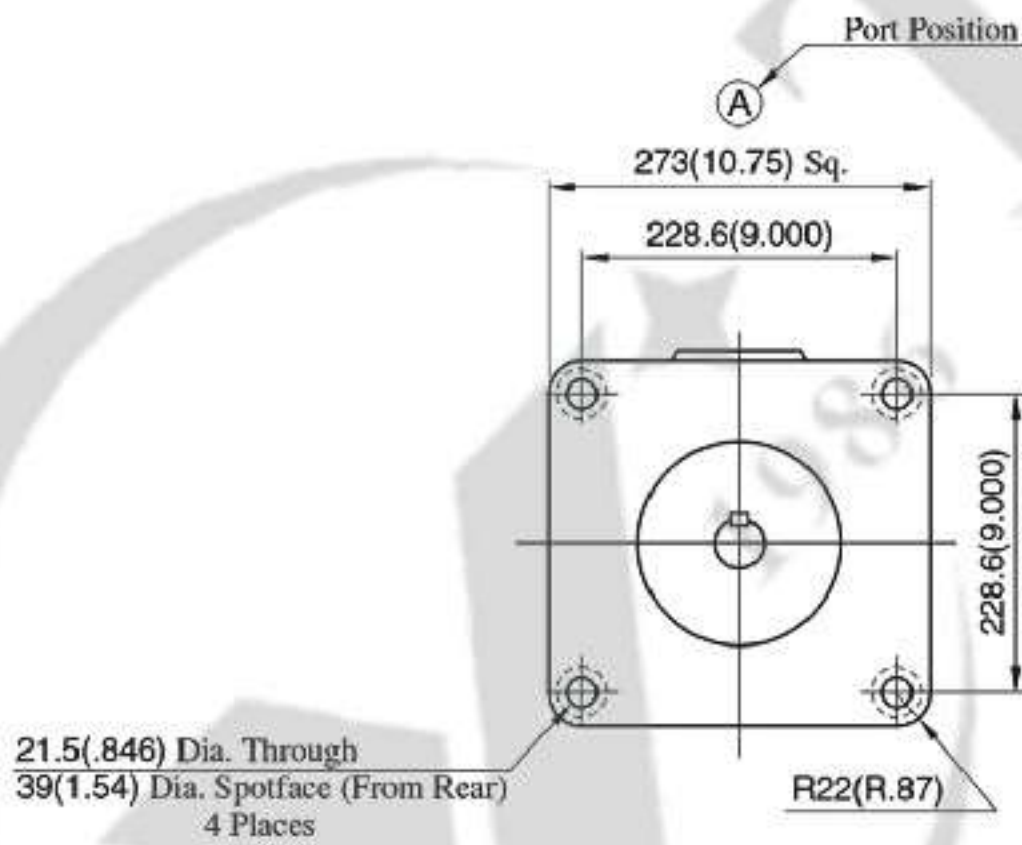
PV2R3- Foot Mtg. (脚座安装)



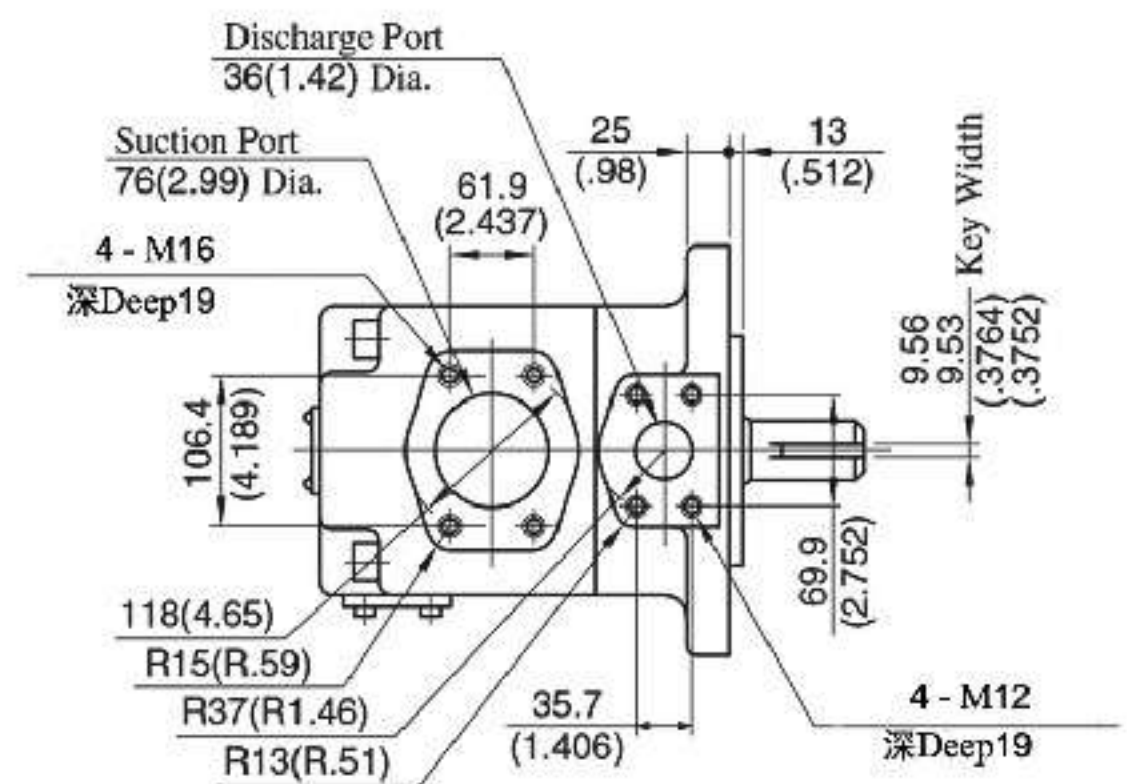
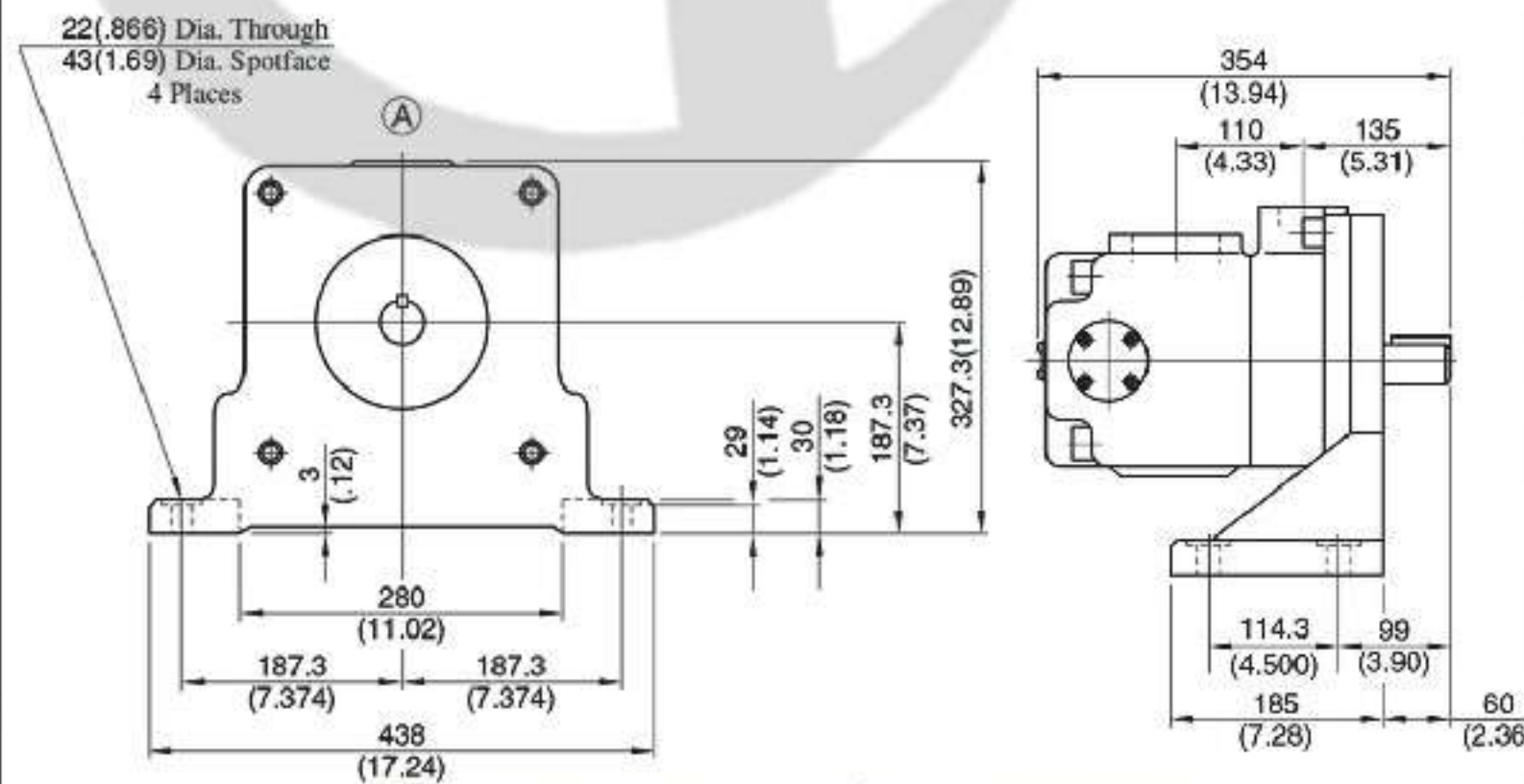
For other dimensions, refer to "Flange Mtg."

DIMENSIONS IN MILLIMETRES (INCHES)

PV2R4- Flange Mtg. (法兰安装)



PV2R4- Foot Mtg. (脚座安装)

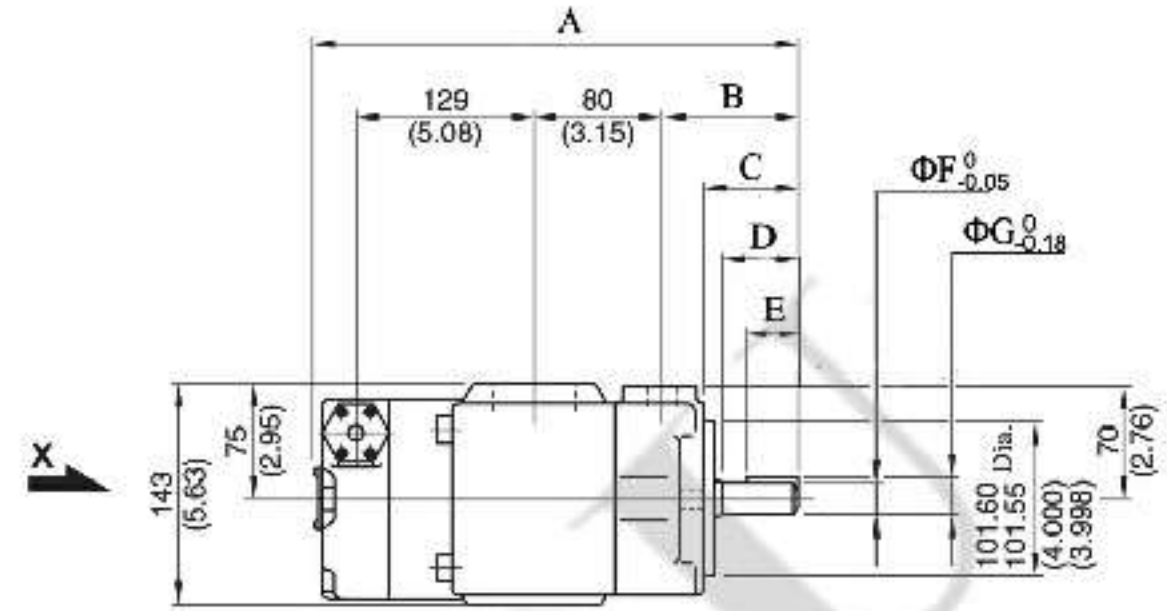
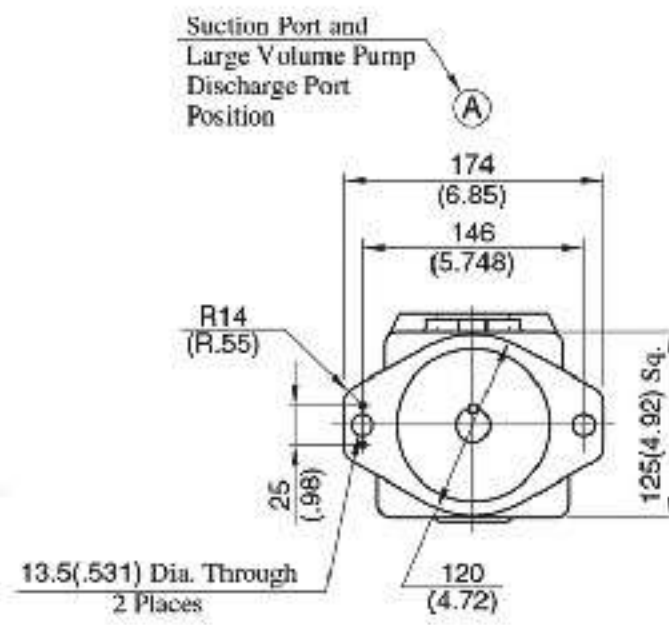
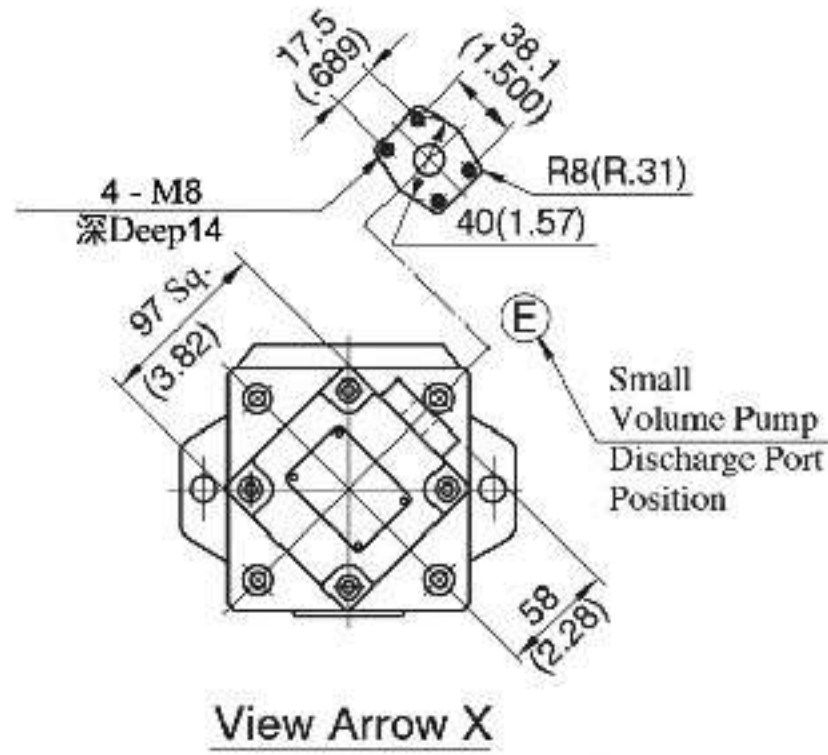


For other dimensions, refer to "Flange Mtg."

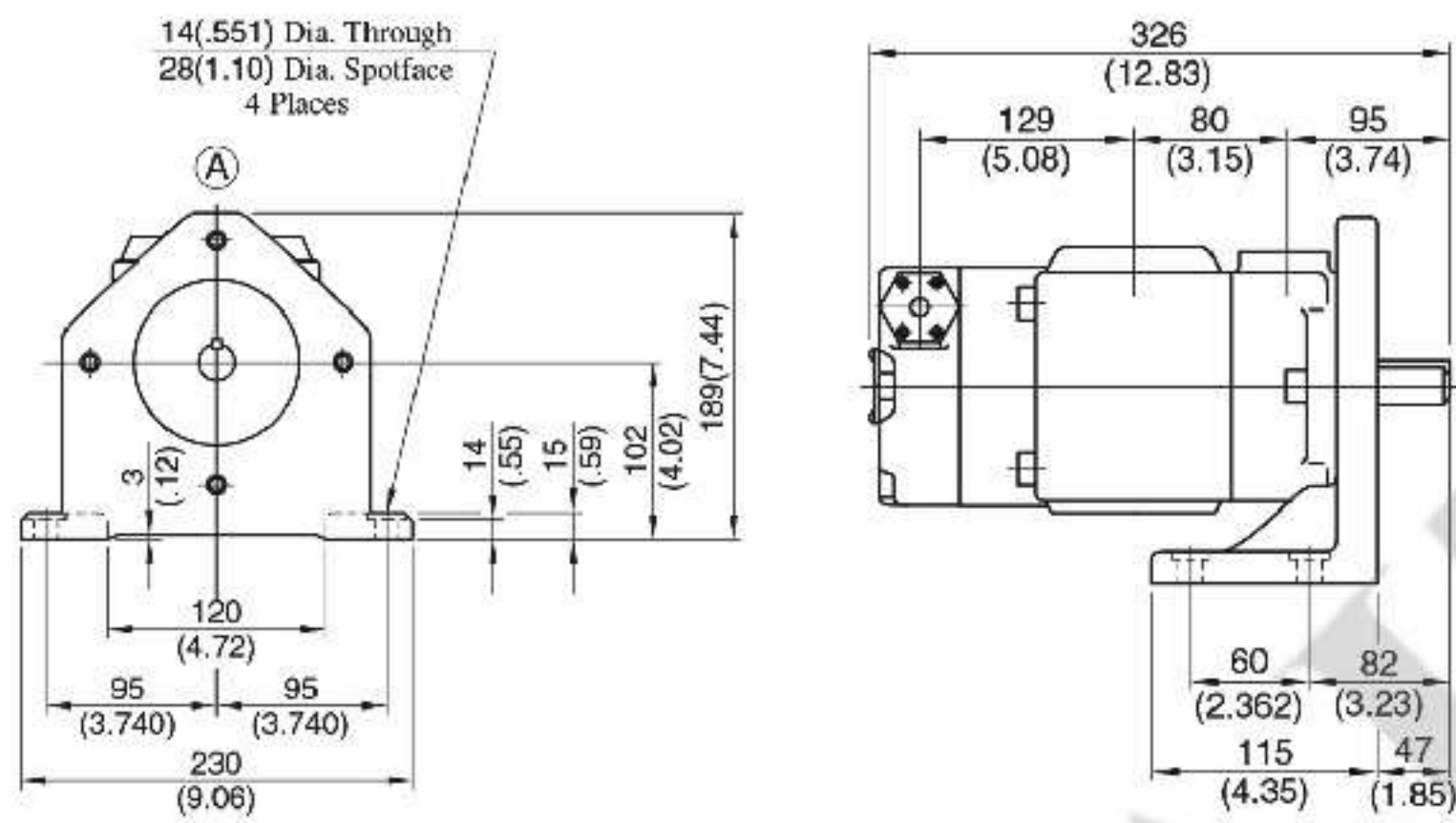
DIMENSIONS IN MILLIMETRES (INCHES)

PV2R12- Flange Mtg. (法兰安装)

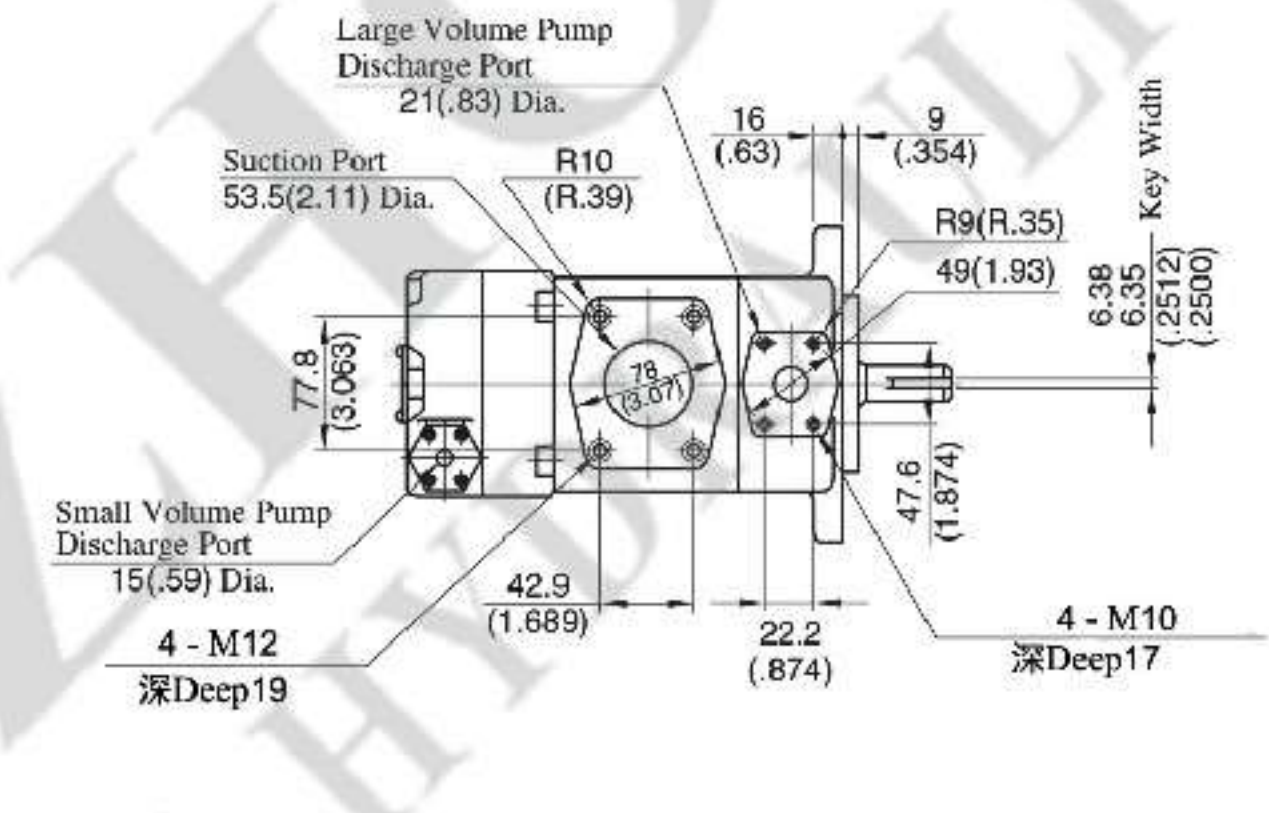
轴伸形式 Shaft extension form	A	B	C	D	F	G	H
1	326	95	67	55	40	25.4	28.18
2	348	87	59	47	32	22.23	25.01



PV2R12- Foot Mtg. (脚座安装)

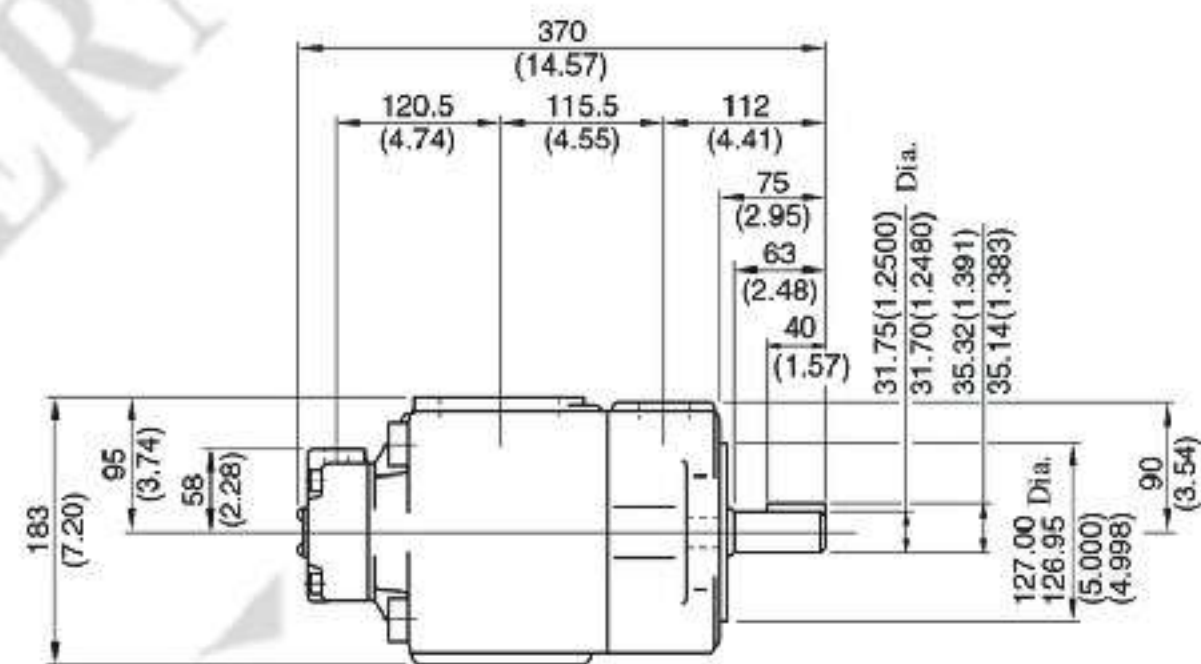
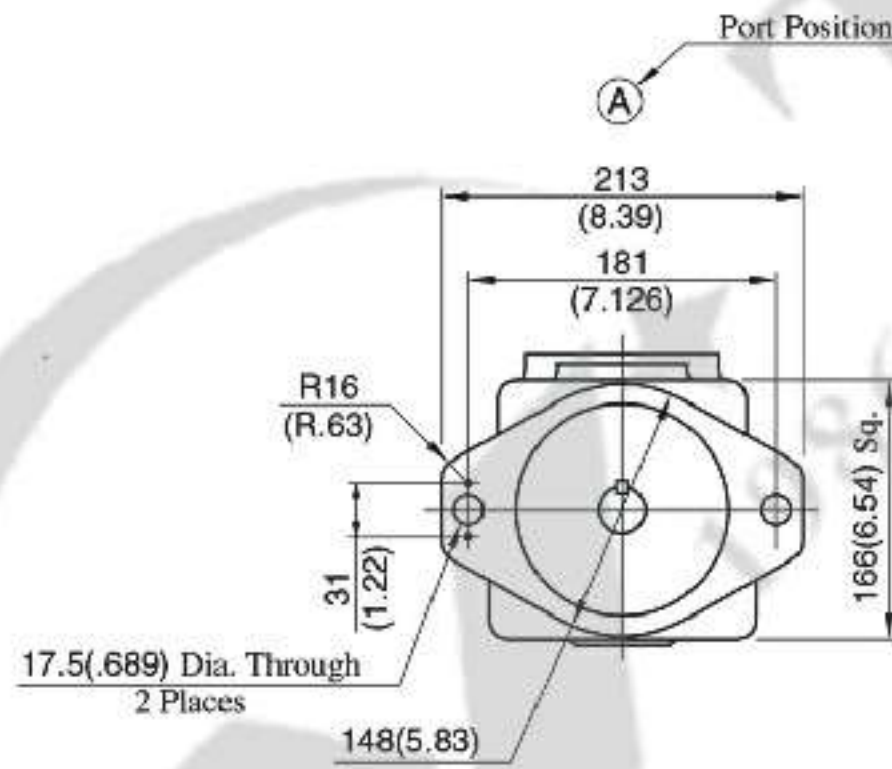


For other dimensions, refer to "Flange Mtg."

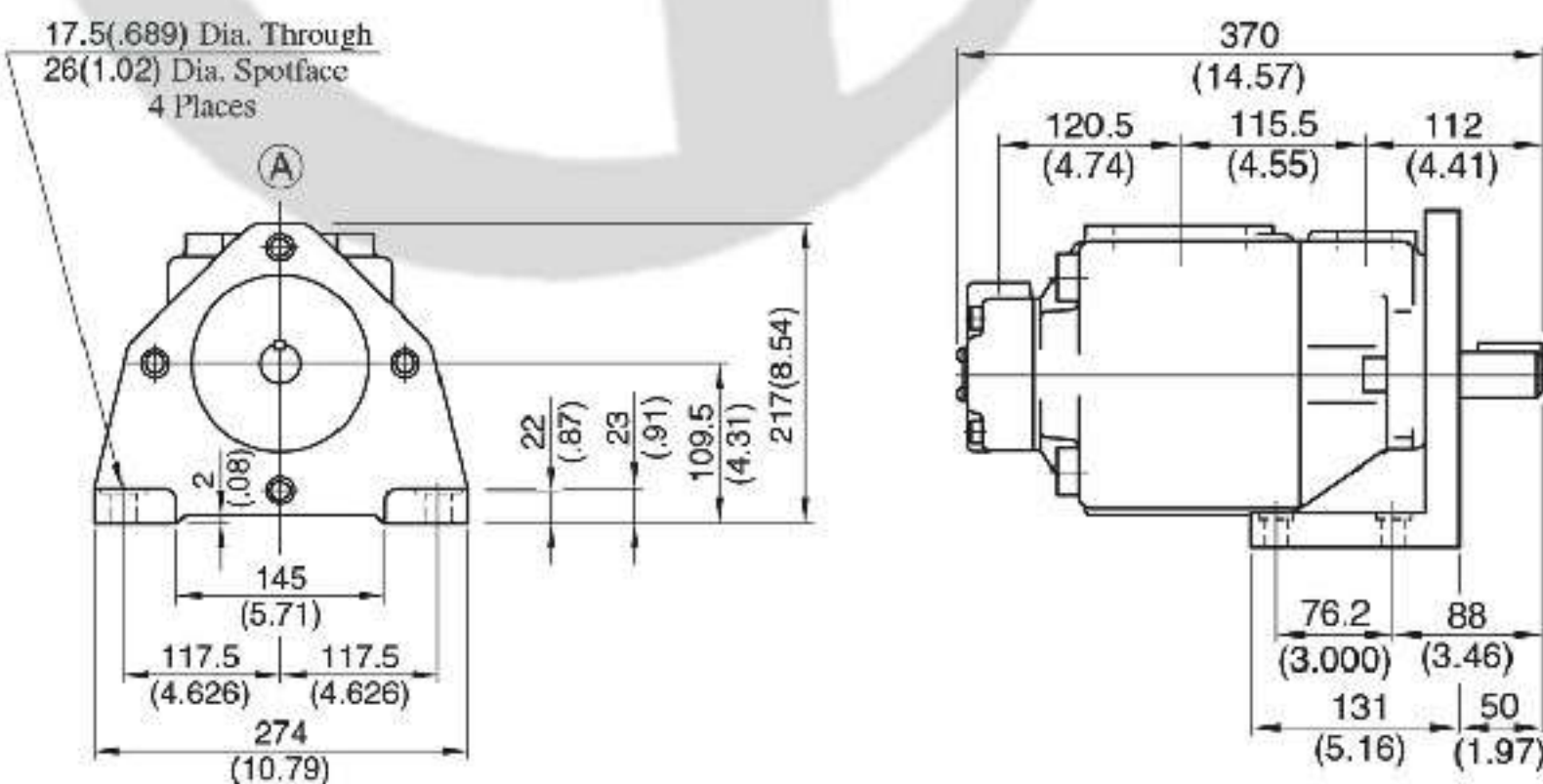


DIMENSIONS IN MILLIMETRES (INCHES)

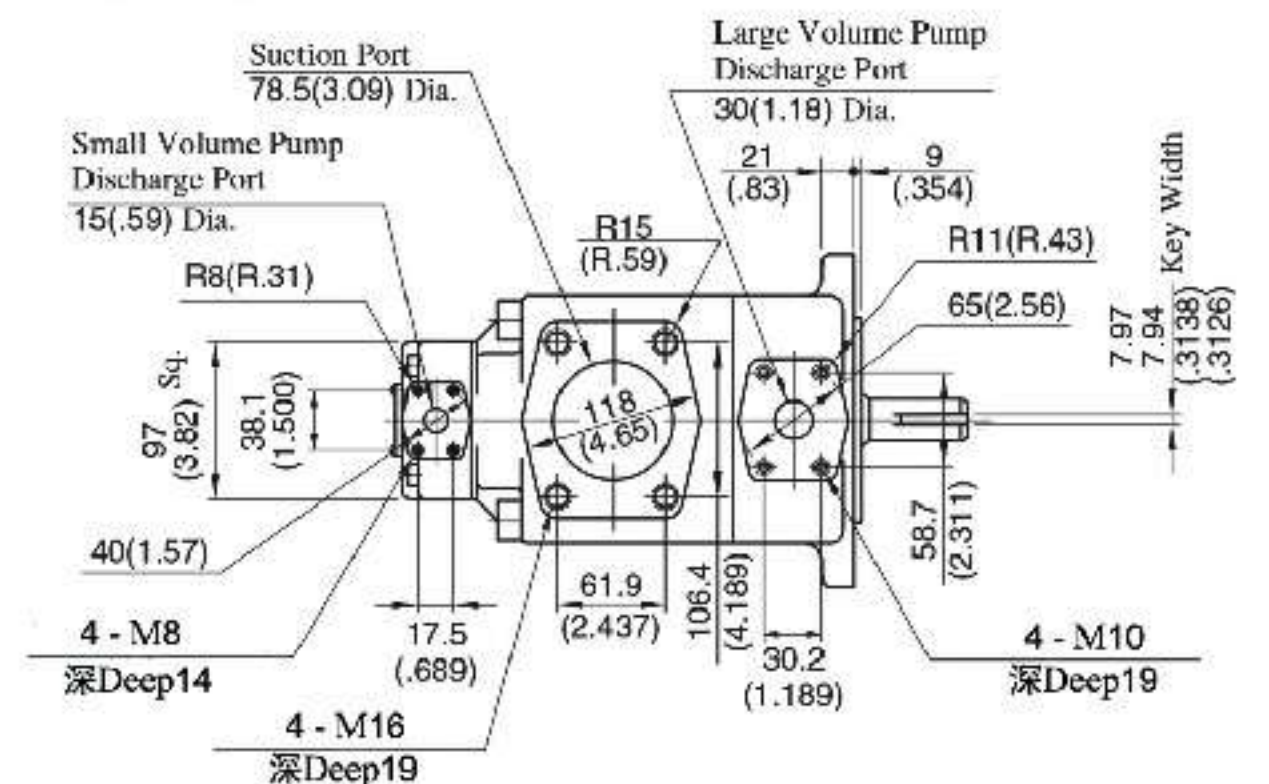
PV2R13- Flange Mtg. (法兰安装)



PV2R13- Foot Mtg. (脚座安装)

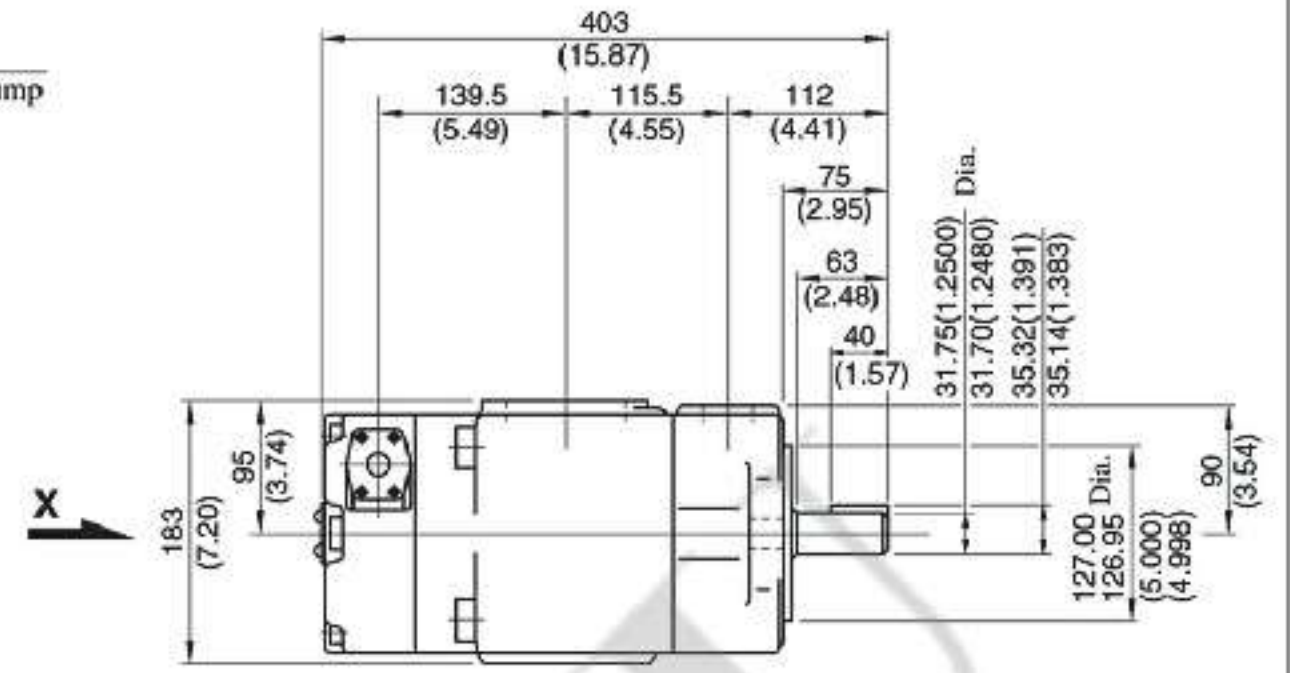
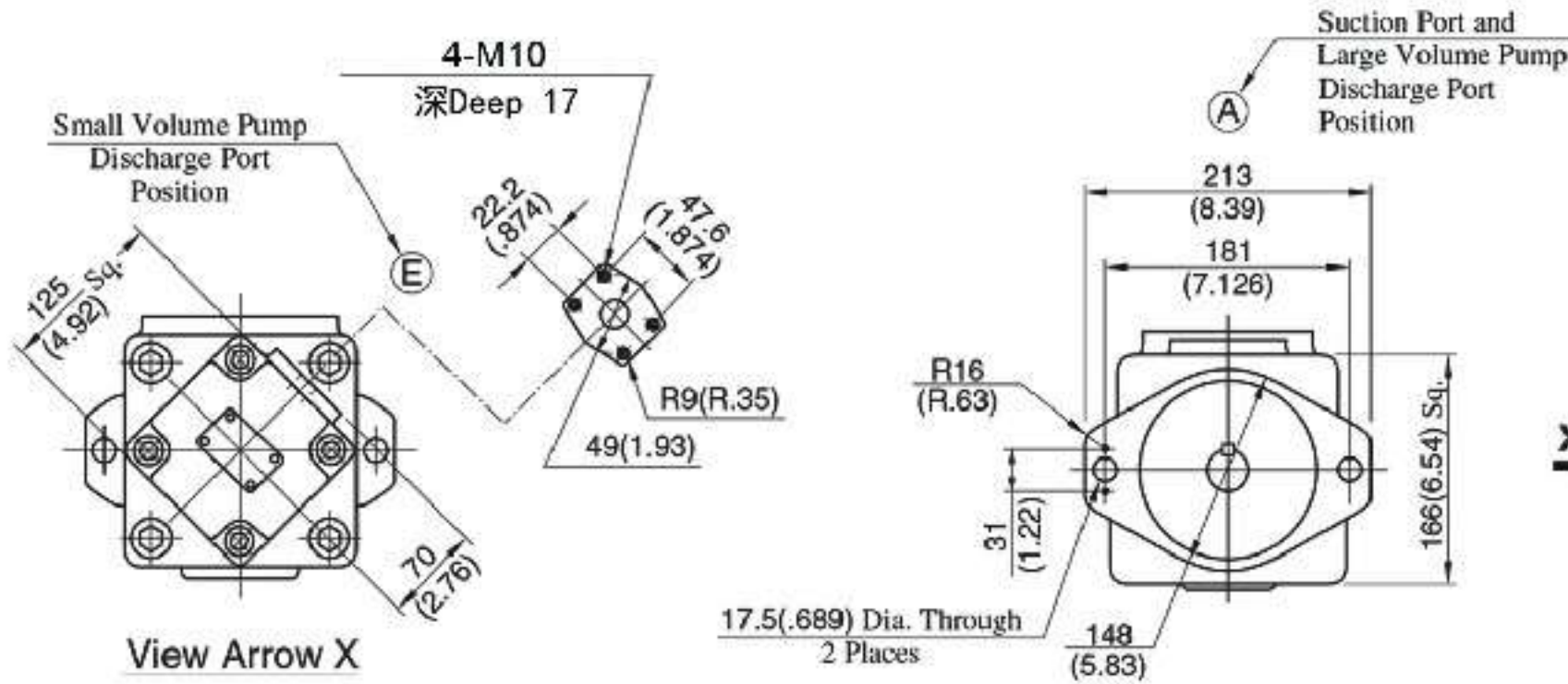


For other dimensions, refer to "Flange Mtg."

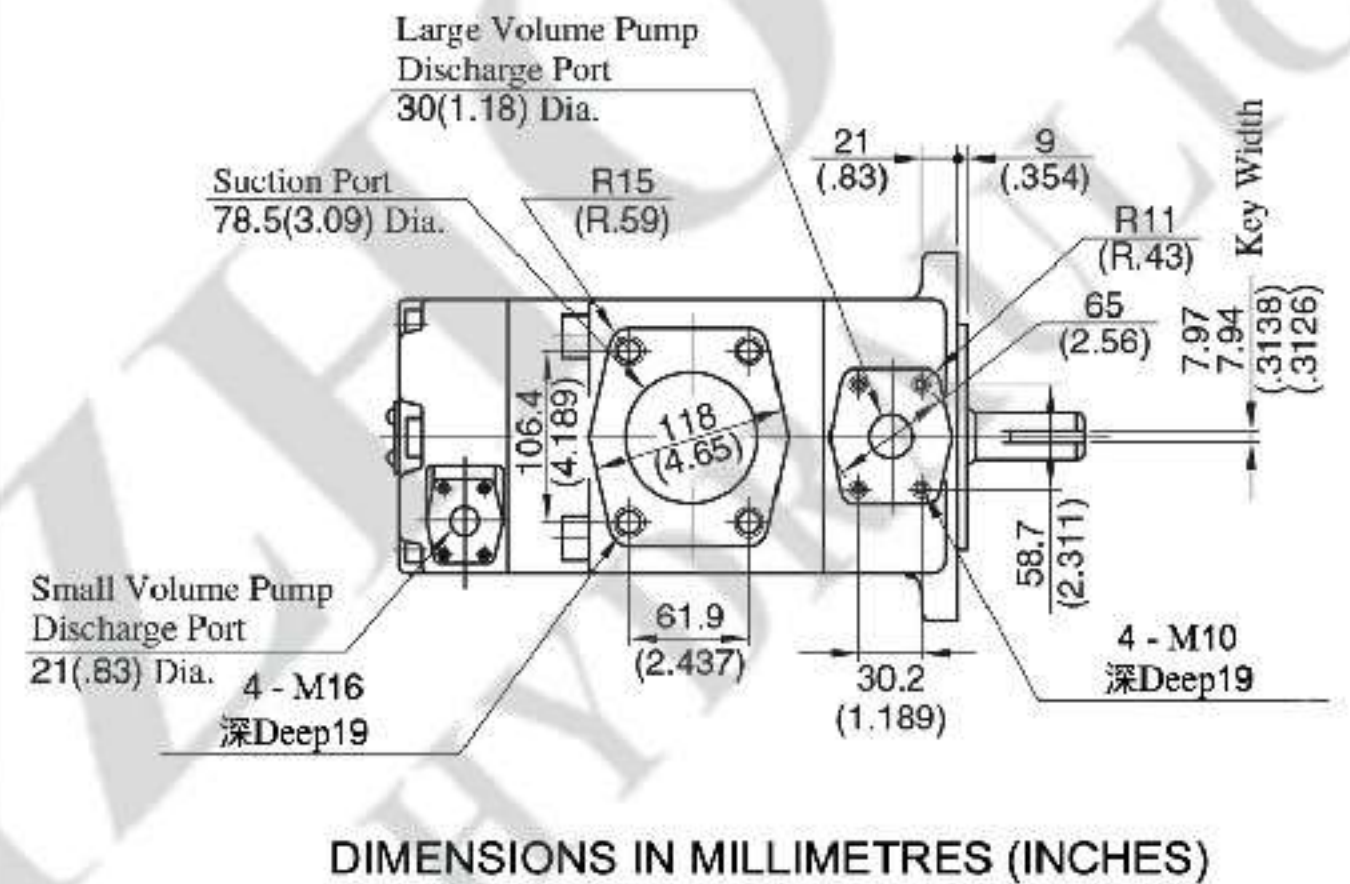
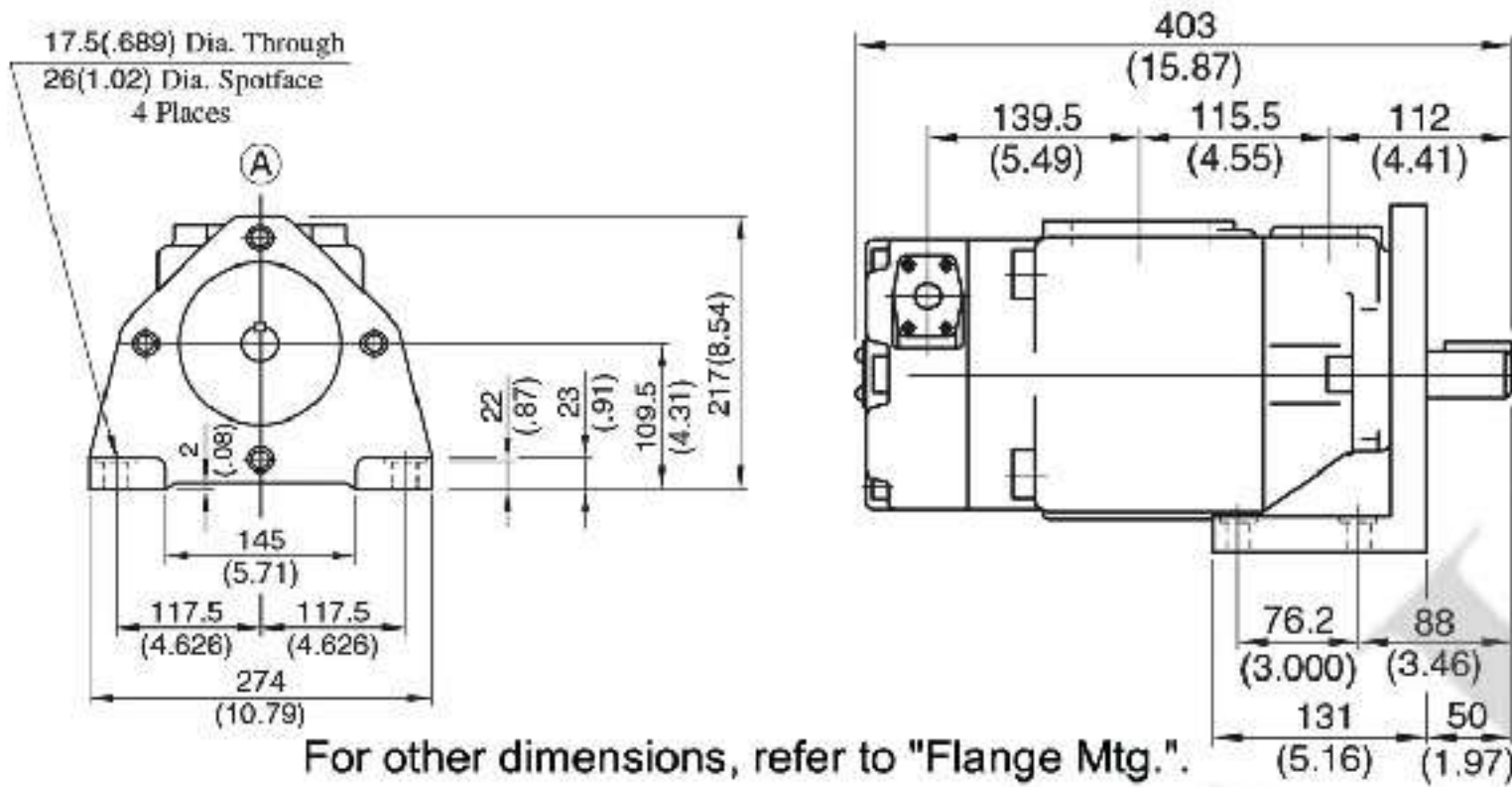


DIMENSIONS IN MILLIMETRES (INCHES)

PV2R23- Flange Mtg. (法兰安装)



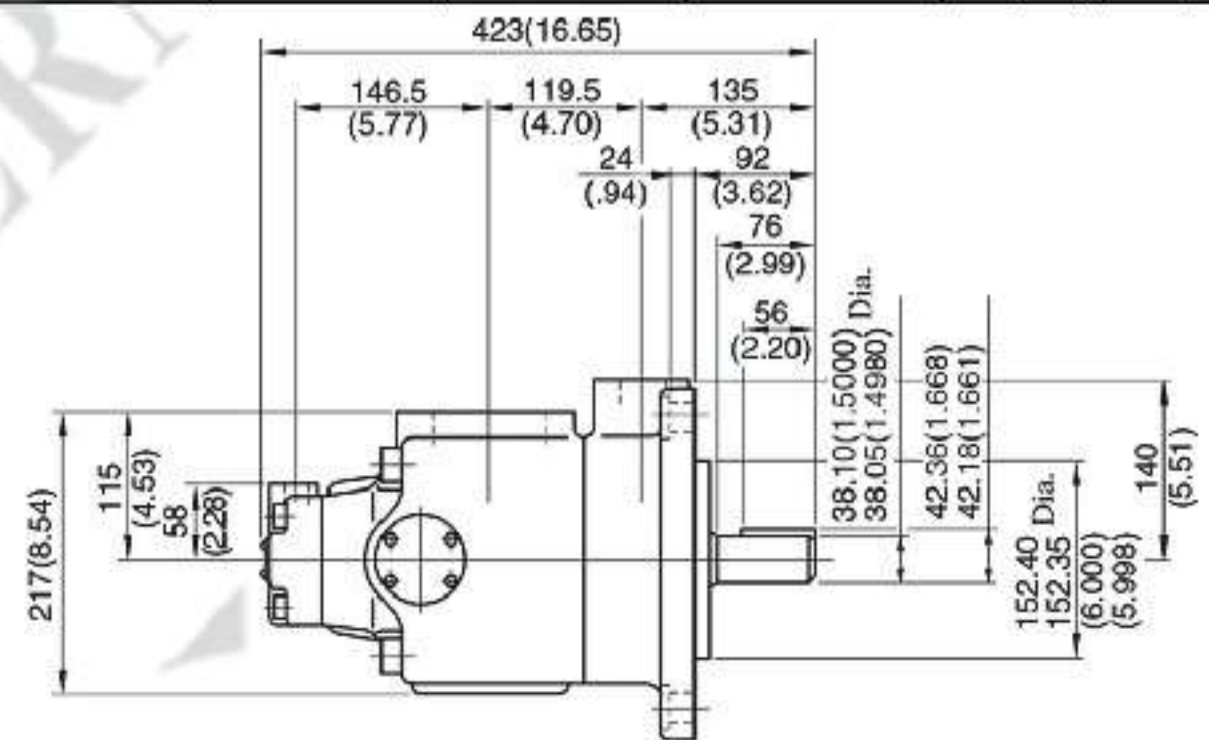
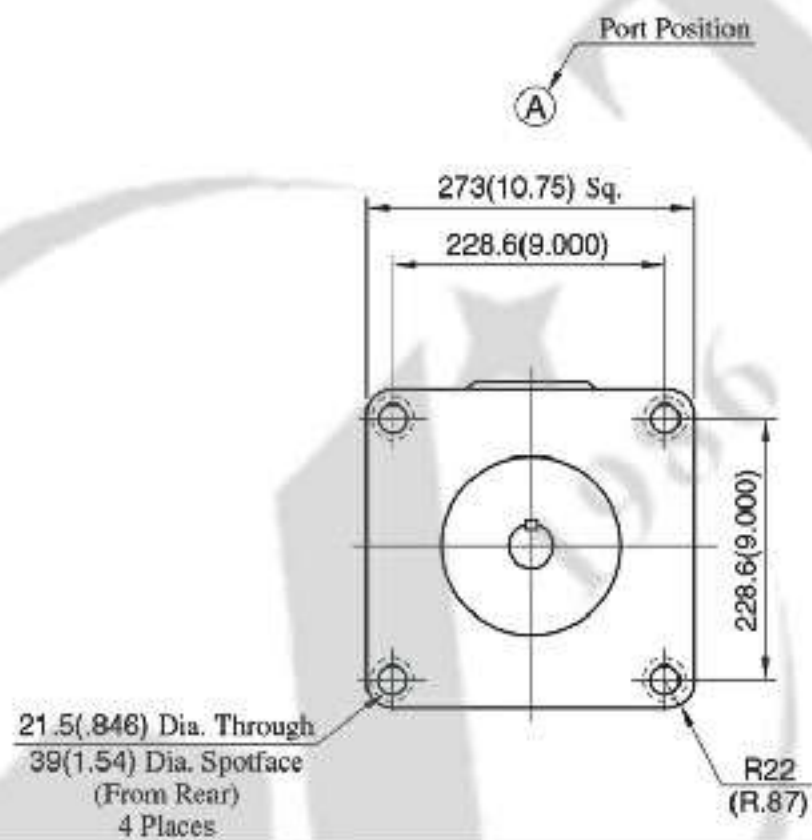
PV2R23- Foot Mtg.(脚座安装)



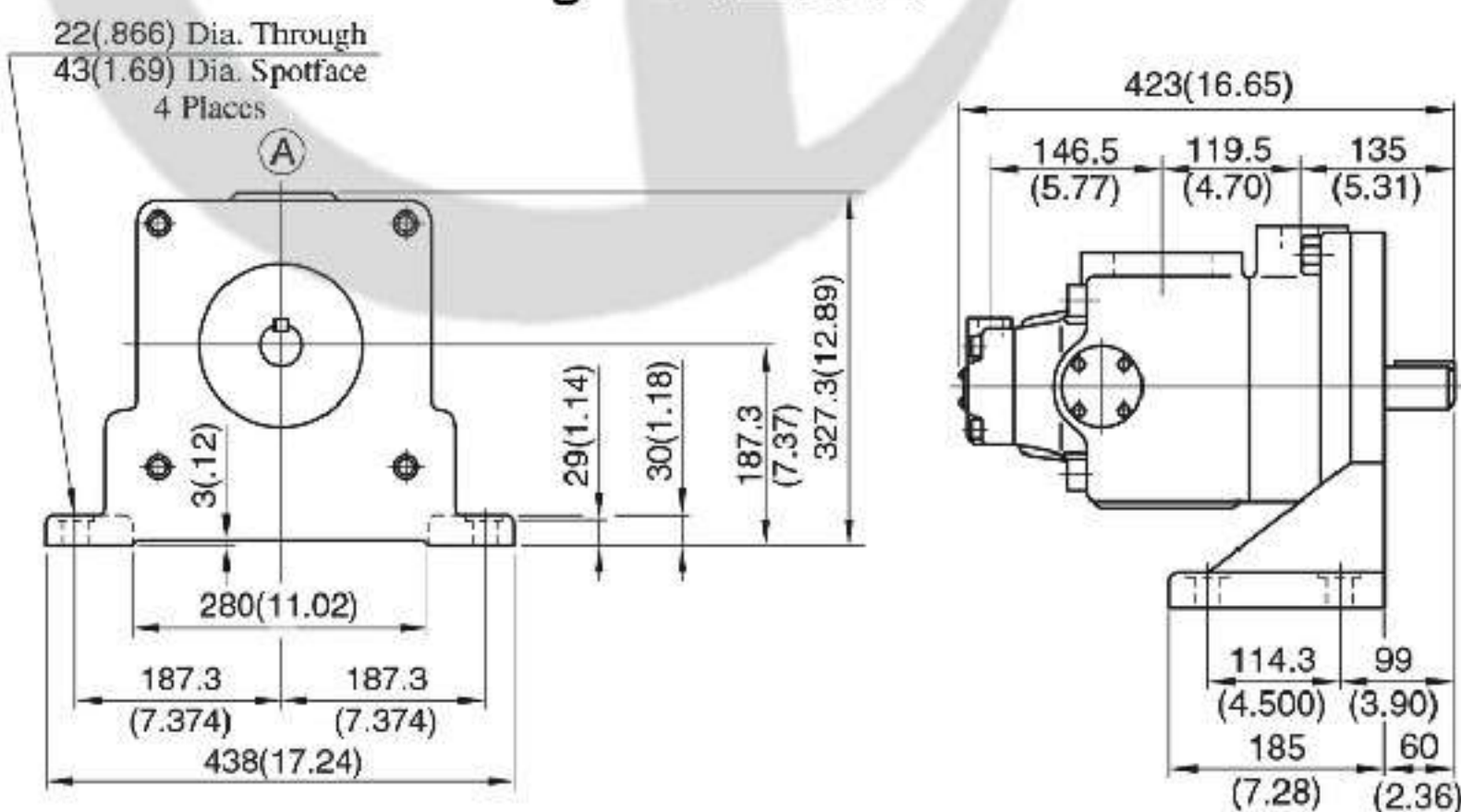
DIMENSIONS IN MILLIMETRES (INCHES)

PV2R14- Flange Mtg. (法兰安装)

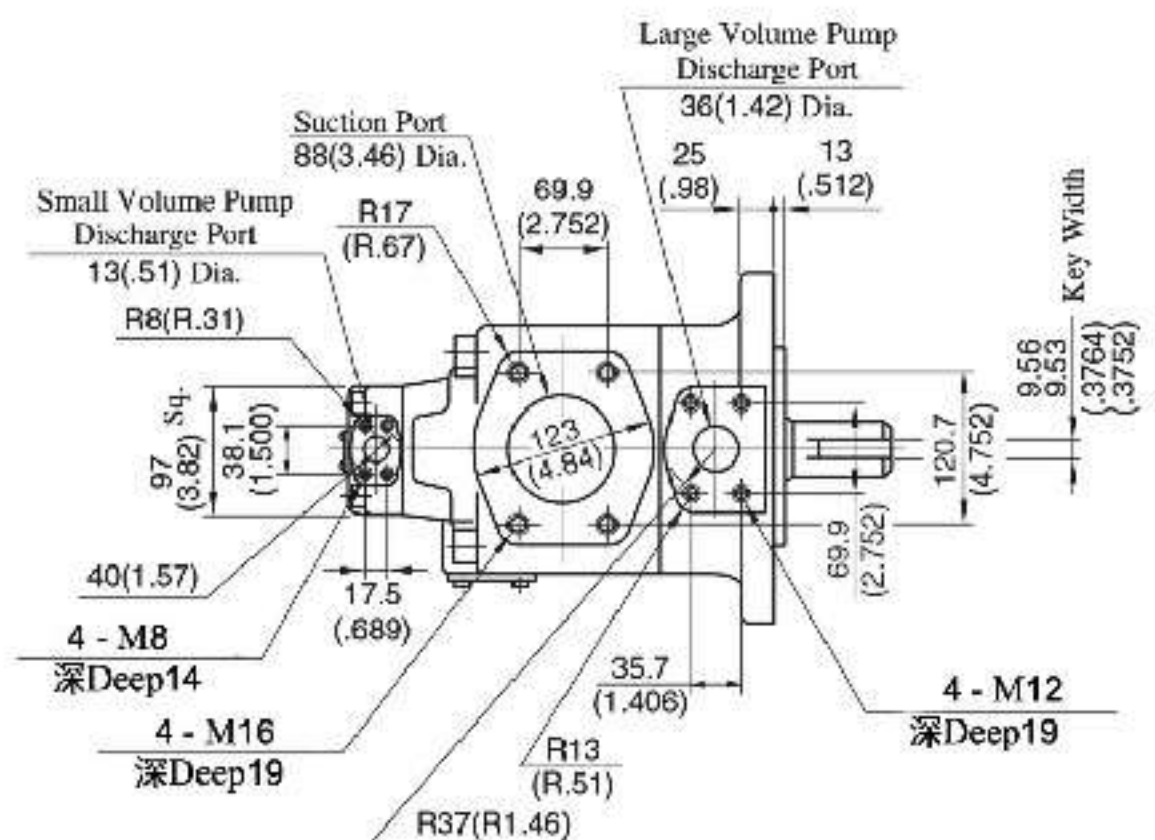
Model Numbers	" C " Thd.	" D " Thd.	" E " Thd.	Dimensions mm(Inches)		
				F	H	J
PV2R14- * - * -F-RAAA-32	M16	M12	M8	19 (.75)	19 (.75)	14 (.55)
PV2R14- * - * -F-RAAA-3290	5/8-11 UNC	1/2-13 UNC	5/16-18 UNC	21 (.83)	21 (.83)	16 (.63)



PV2R14- Foot Mtg. (脚座安装)

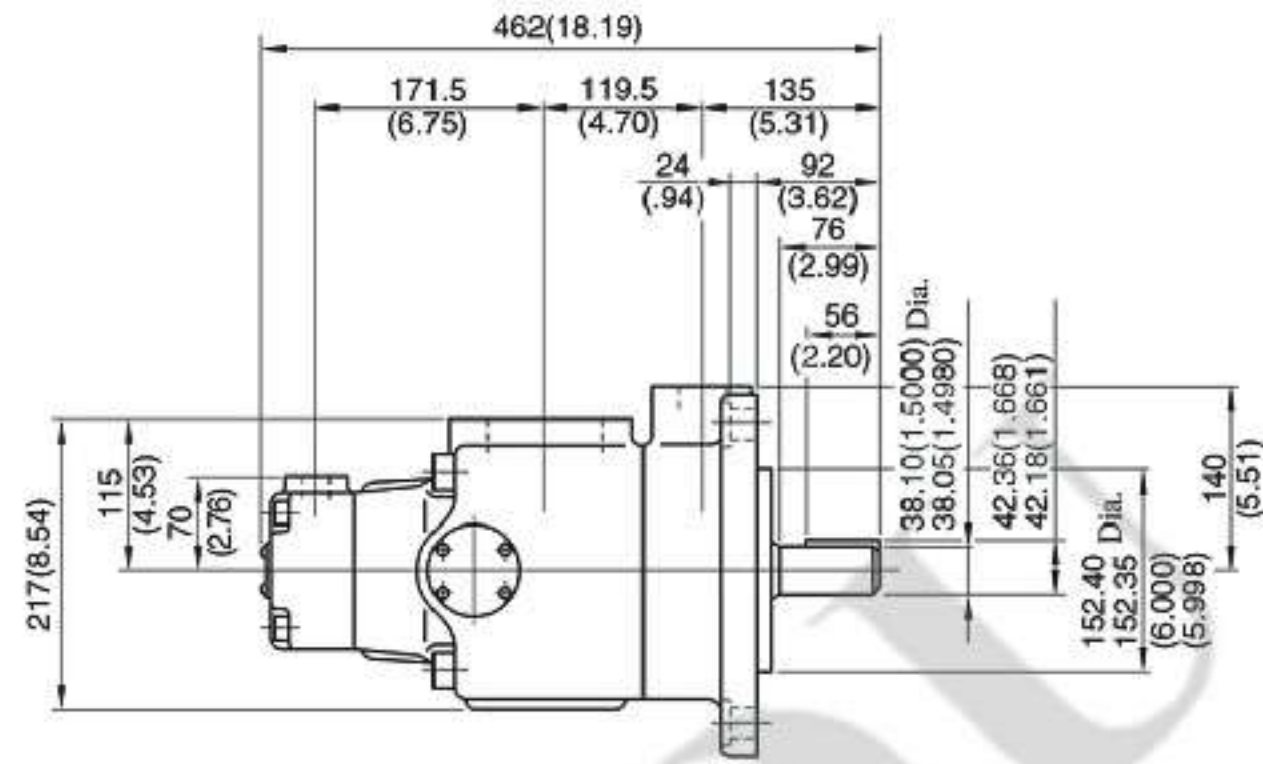
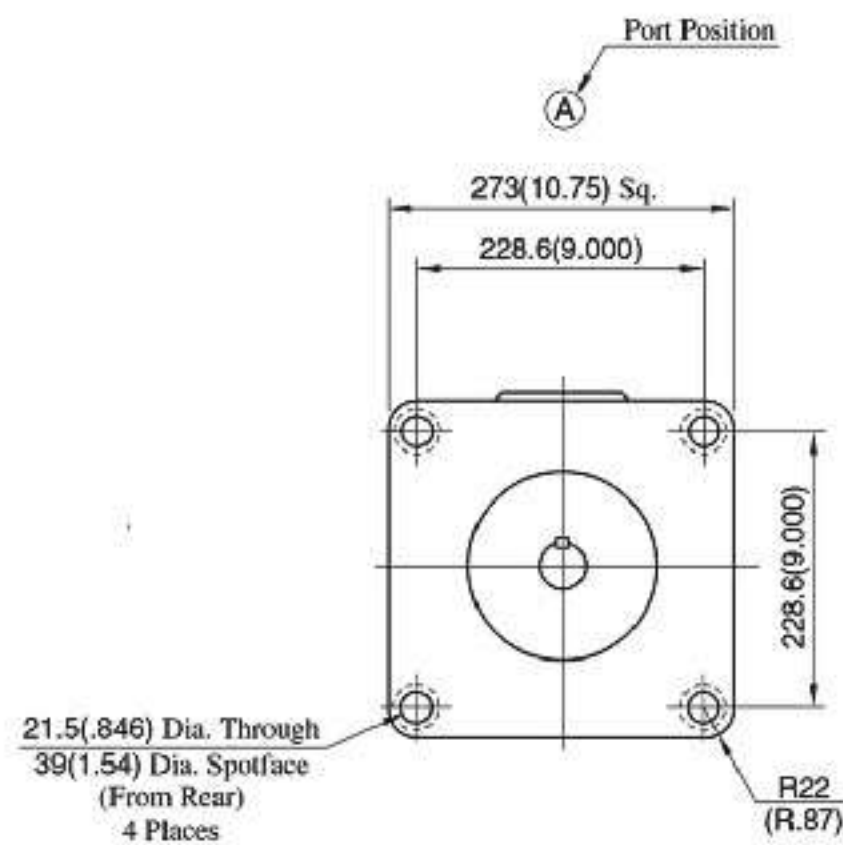


For other dimensions, refer to "Flange Mtg.".

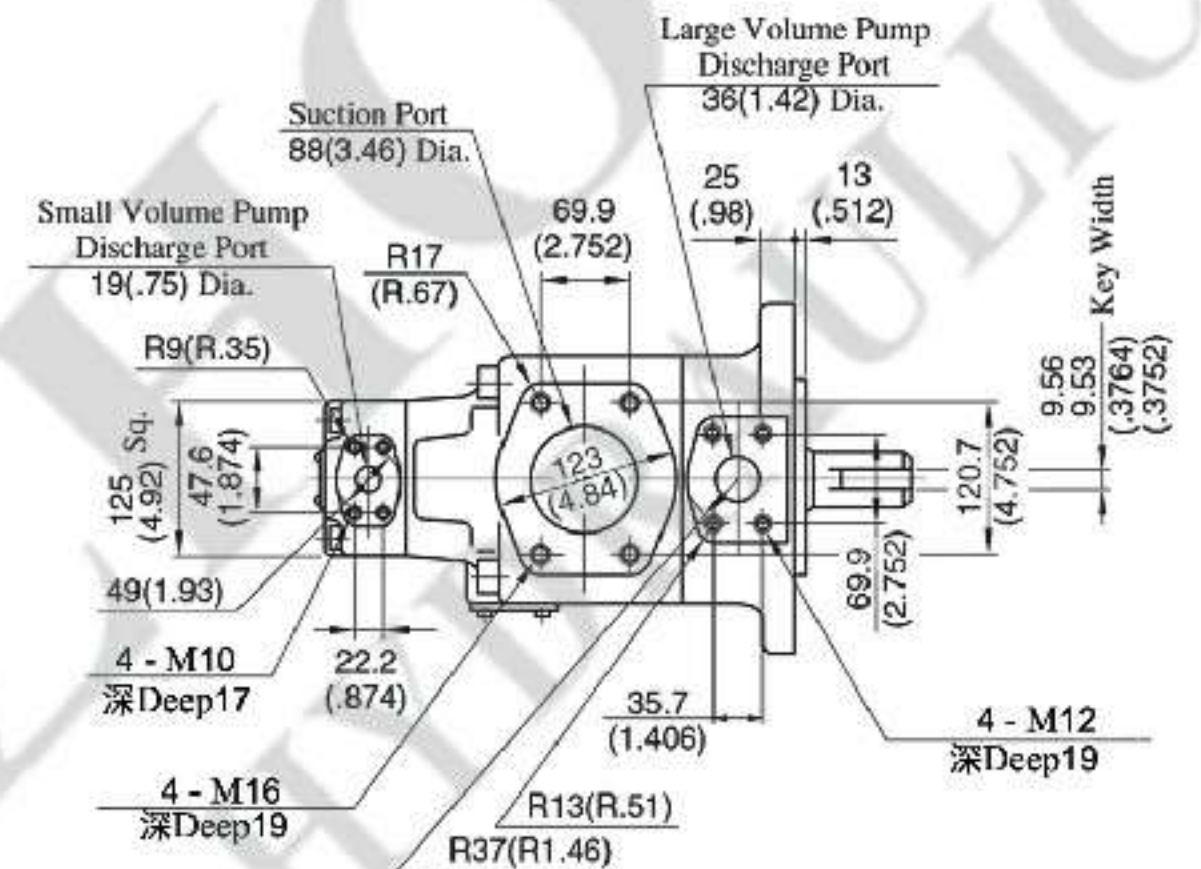
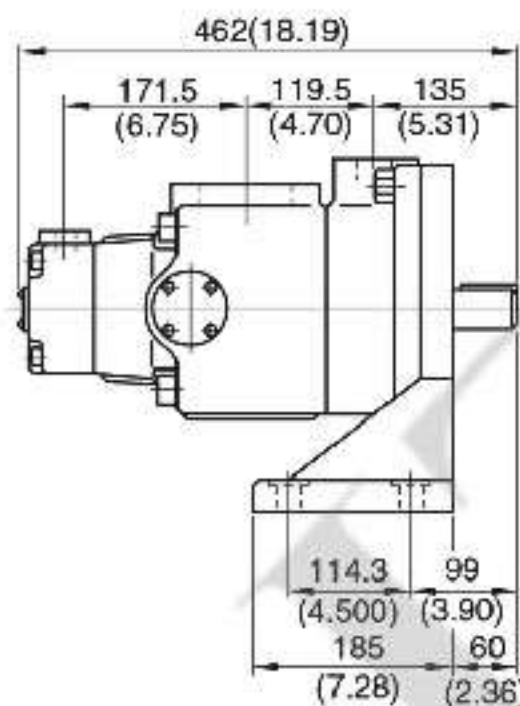
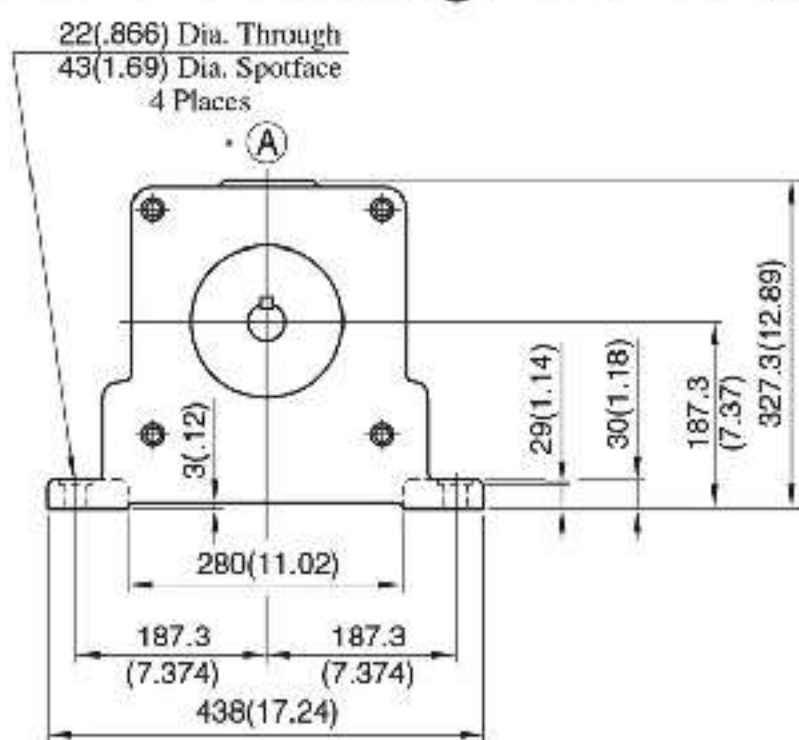


DIMENSIONS IN MILLIMETRES (INCHES)

PV2R24- Flange Mtg. (法兰安装)



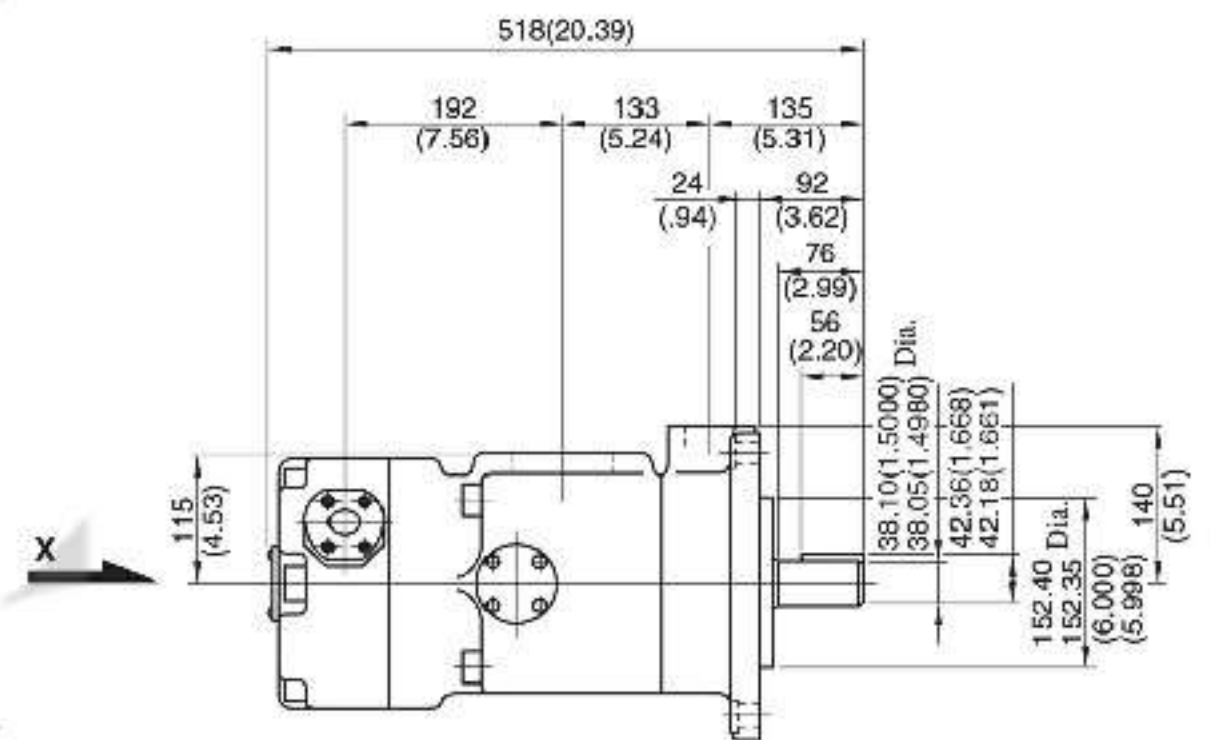
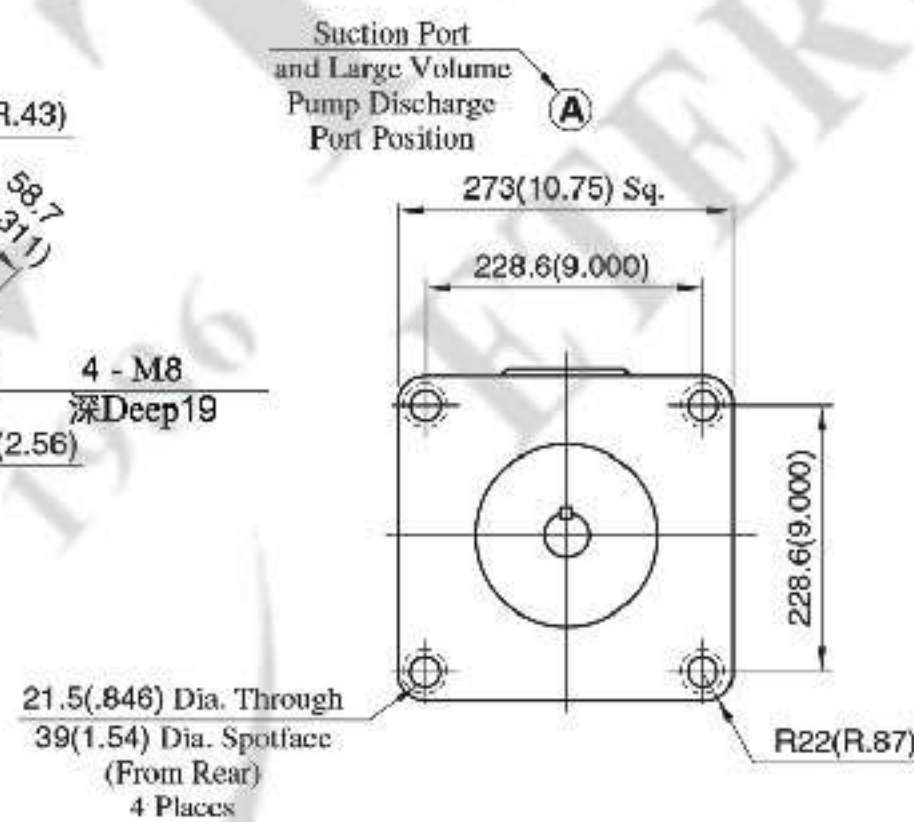
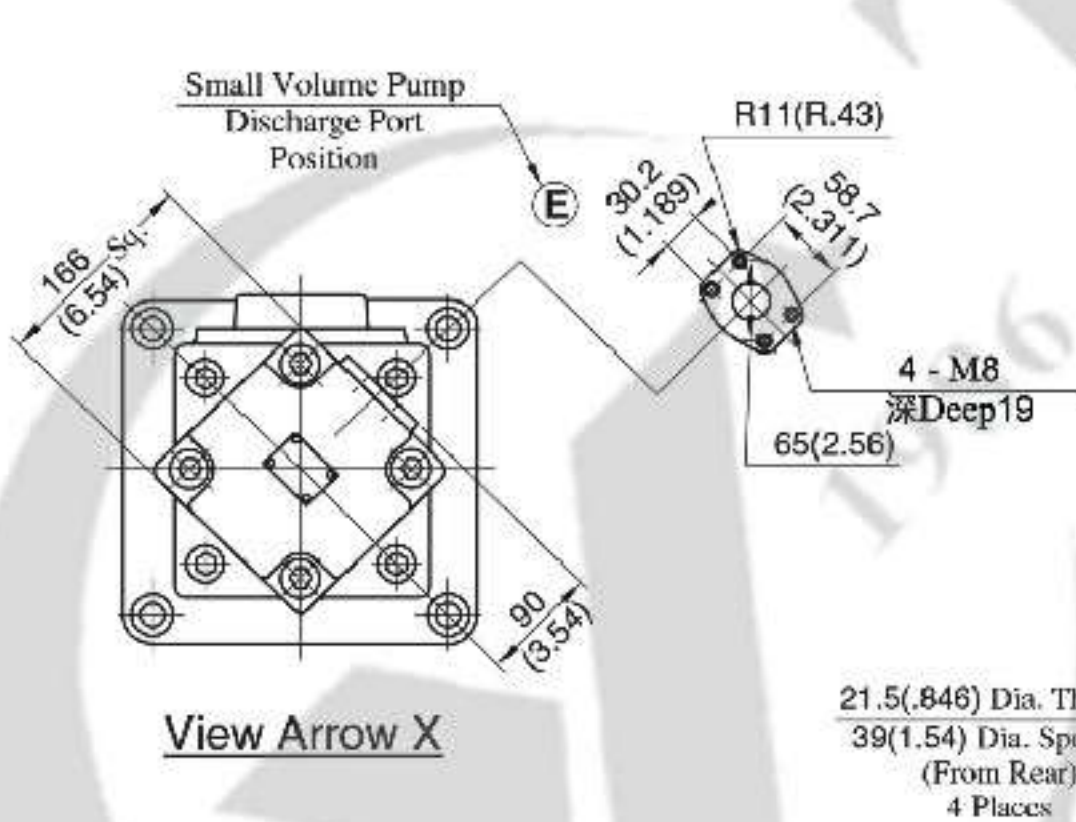
PV2R24- Foot Mtg. (脚座安装)



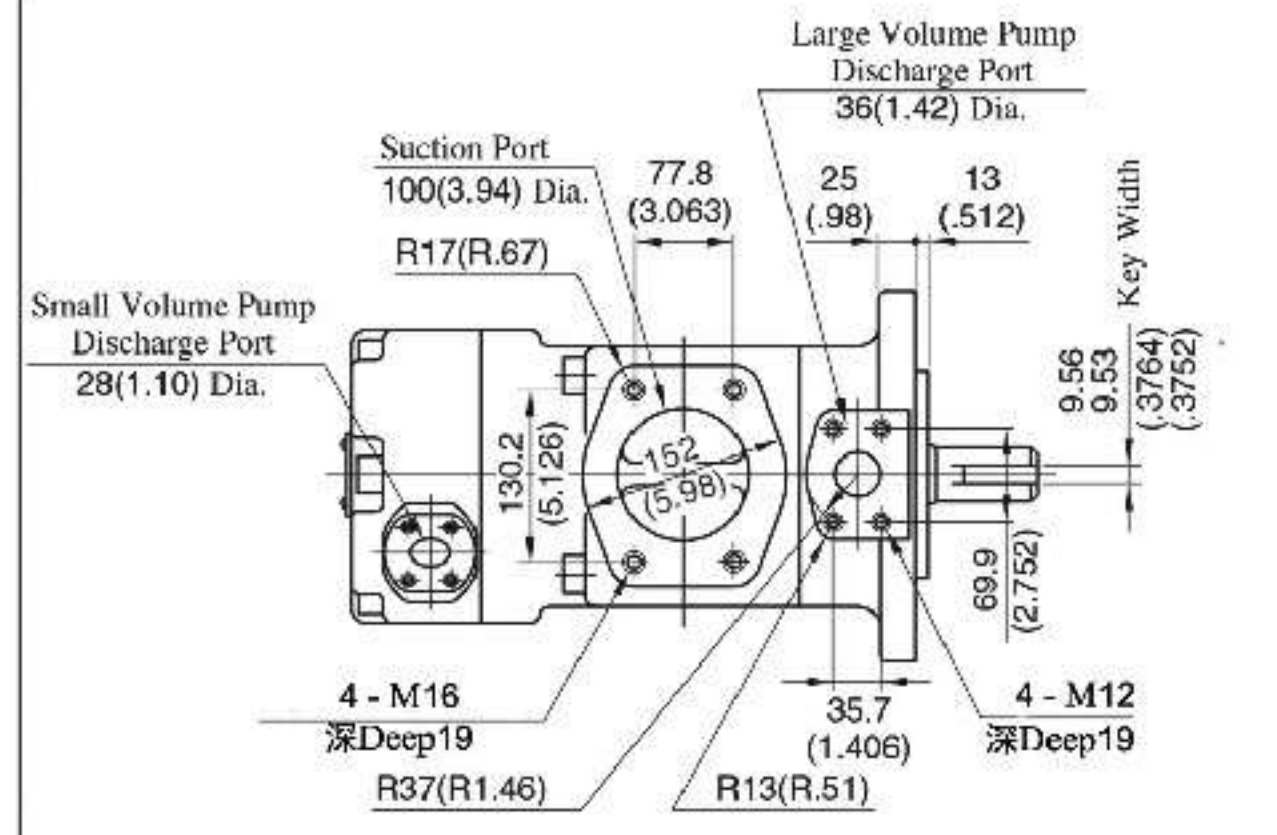
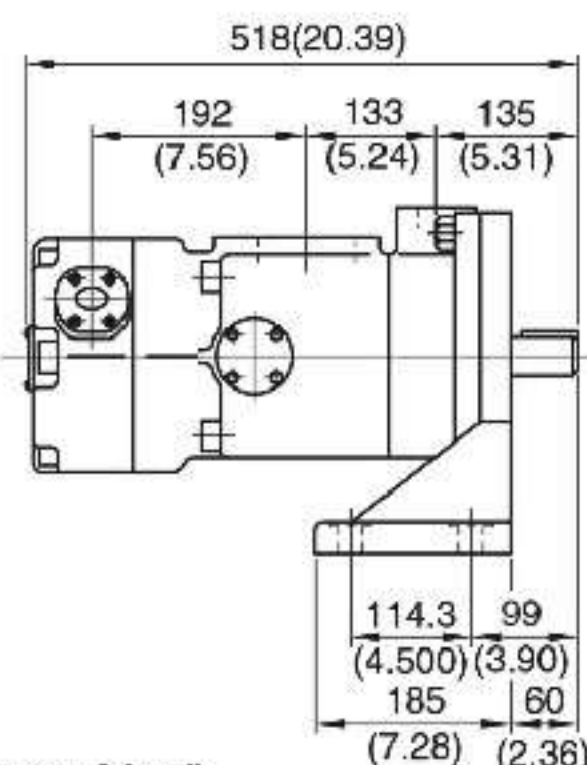
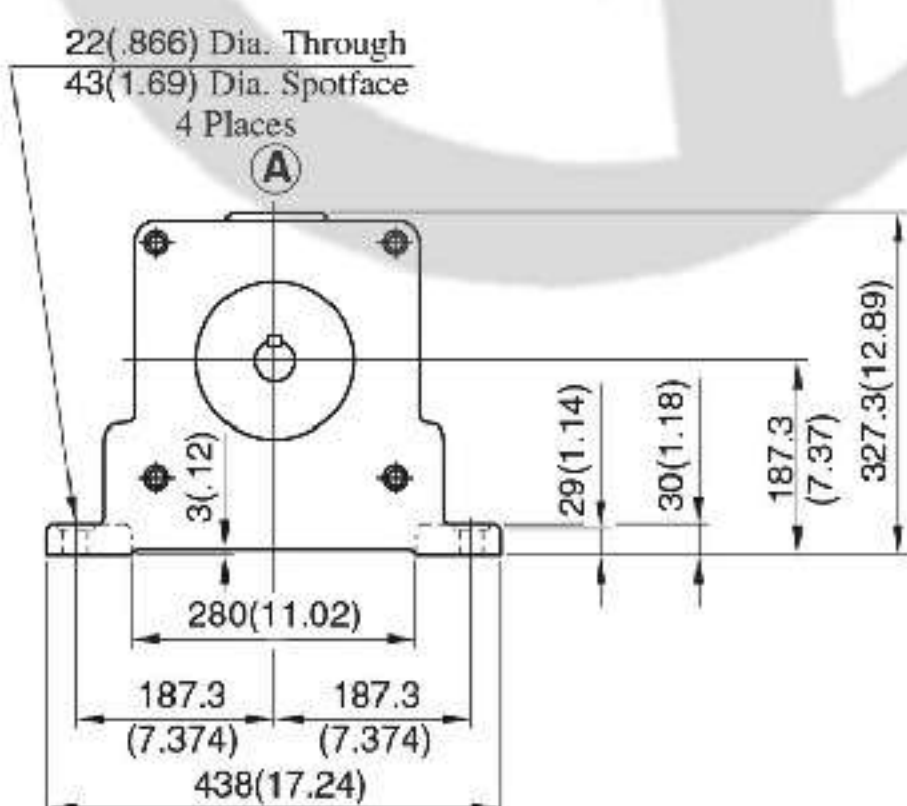
For other dimensions, refer to "Flange Mtg."

DIMENSIONS IN MILLIMETRES (INCHES)

PV2R34- Flange Mtg. (法兰安装)



PV2R34- Foot Mtg. (脚座安装)



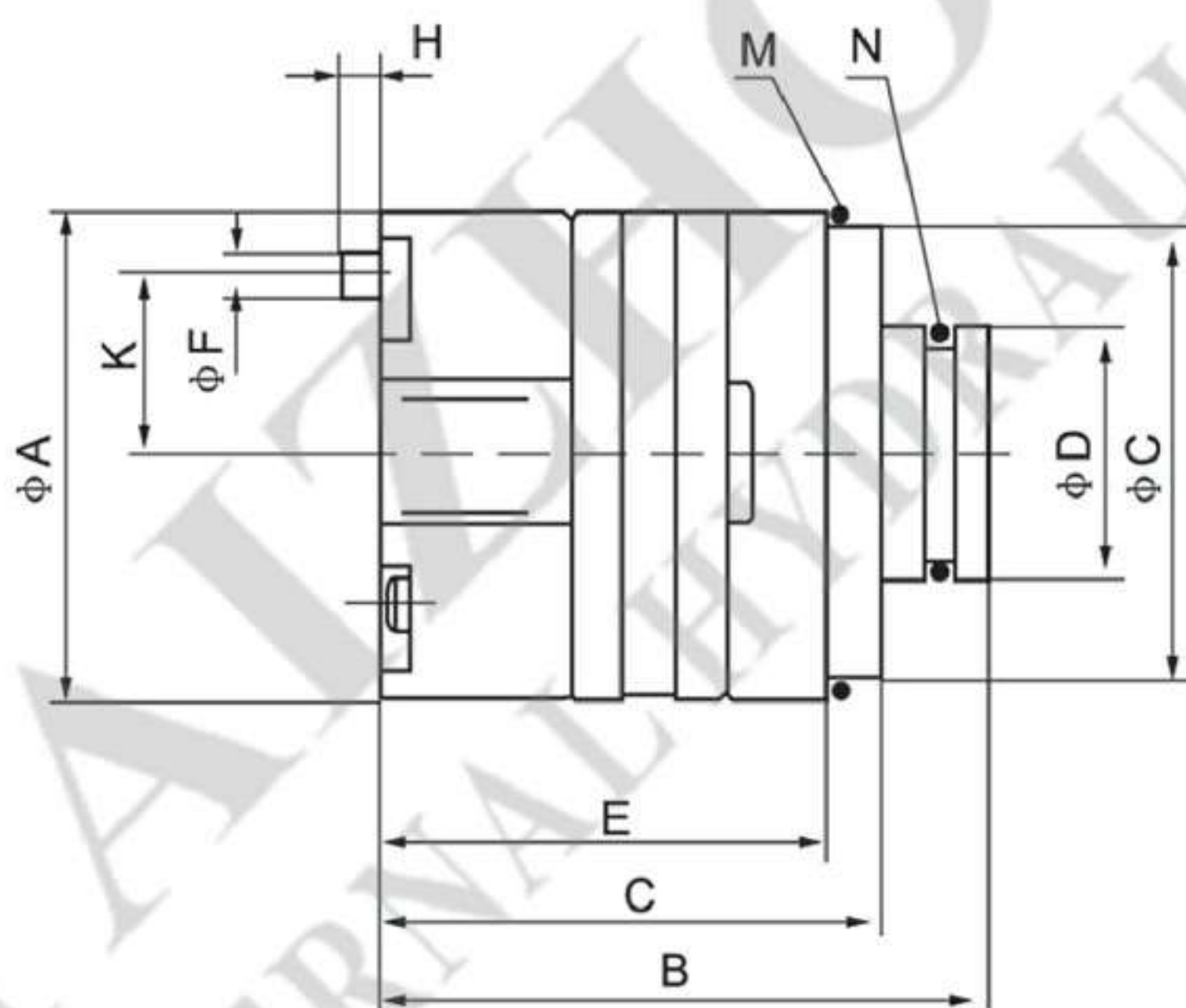
For other dimensions, refer to "Flange Mtg."

DIMENSIONS IN MILLIMETRES (INCHES)

■ PV2R系列泵芯 PV2R Series Cartridge Kit

PC-	PV2R	-23	-R
泵芯标记 Cartridge kit mark	系列号 Model	公称排量 Displacement code(ml/r)	油泵旋向 Rotation
PC:单泵泵芯 & 双联泵前泵芯 PC: Single pump kit & Double pump Front kit PCT: 双联泵后泵芯 Double pump Rear kit	PV2R1	6, 8, 10, 12, 14, 17, 19, 23, 25, 28, 31	(从轴端看) (Viewed from the shaft end) R-顺时针 R-Right rotation L-逆时针 L-Left rotation
	PV2R2	26, 33, 41, 47, 53, 59, 65, 75	
	PV2R3	52, 60, 66, 76, 85, 94, 116, 125, 136, 153	
	PV2R4	136, 153, 184, 200, 237	

■ 安装连接尺寸 Installation Size

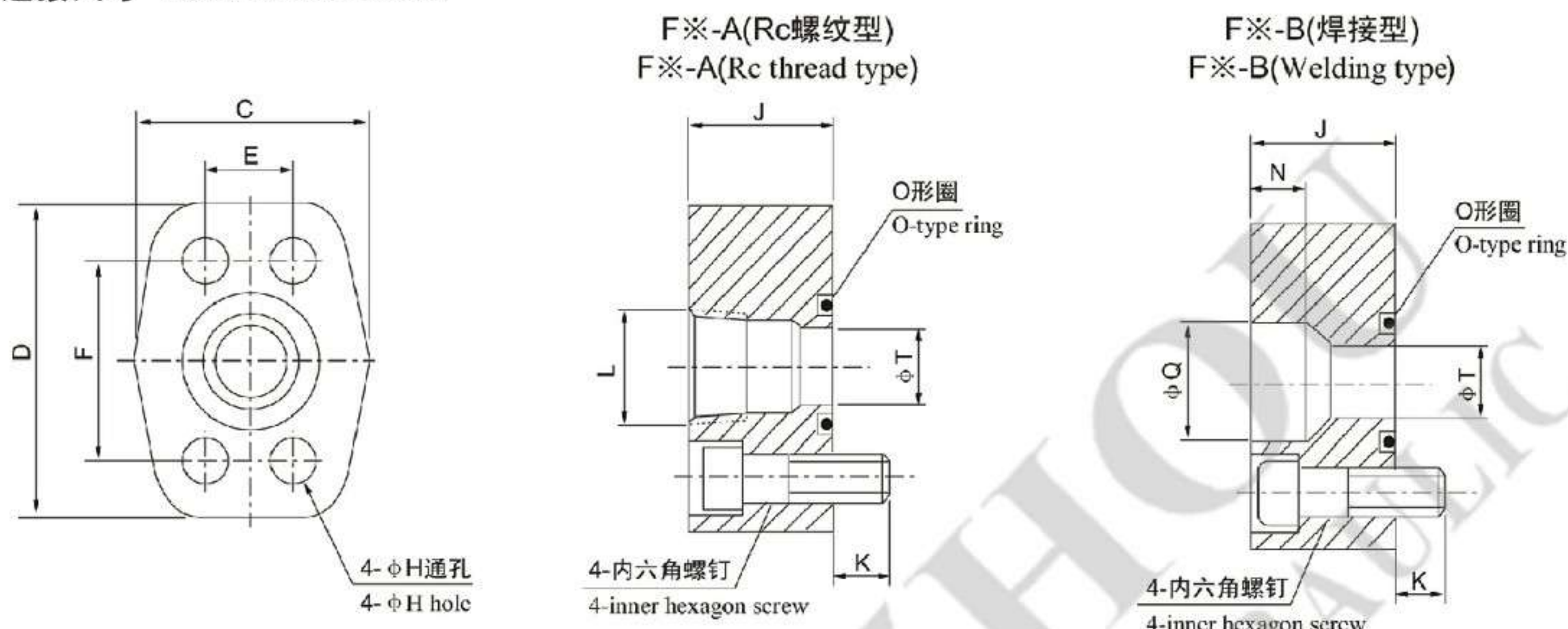


系列号 Models	A	B	C	D	E	F	G	H	K	M	N
PV2R1	68	84	70	35	62	6	62.7	5	R25	59.4X3.1	29.4X3.1
PV2R2	90	109	93	52	82	6	84.7	5	R36	84.4X3.1	45.7X3.5
PV2R3	120.5	127.5	106	72	94	8	115	8	R48	114.4X3.1	65.0X3.5

系列号 Models	转子内花键齿廓参数 Spline teeth No. in rotor					
	模数 Modulus	齿数 No. of teeth	标准压力角 Standard angle	大径 Major diameter	小径 Minor diameter	(节径圆)弧齿槽宽 Space width
PV2R1	0.75	24	45°	19.050	17.550	1.328
PV2R2	1.0	24	45°	25.400	23.400	1.771
PV2R3	1.0	28	45°	29.400	27.400	1.771

■ 法兰连接组件 Flange Part

安装连接尺寸 Installation sizes



法兰型号 Flange models	对应管子规格 Corresponding pipes' specifications	尺寸 mm Sizes mm											O型圈 O-type ring GB34521-82	内六角螺钉 inner hexagon screw	螺钉拧紧力矩 Tightening torque of screw N·m	对应油泵接口 Corresponding pumps connector
		C	D	E	F	H	J	K	L	N	Q	T				
F04 A	1/2"	43	59.0	17.5	38.1	9.0	28.0	11	1/2"	—	—	13	21.2x2.65	M8x30	35	PV 2R1出口 PV 2R12、PV 2R13 盖端泵出口 PV2R1 port PV. 2R12. PV2R13 cover end pump port
F04-B									—	11	22.5					
F06-A	3/4"	53.2	71.6	22.2	47.6	11.2	30.0	11	3/4"	—	—	19	30x3.55	M10x30	68.5	PV 2R2、PV 2R12 轴端泵出口 PV 2R23盖端泵出口 PV2R2. PV2R12 shaft end pump port PV2R23 cover end pump port
F06-B									—	12	28.5					
F08-A	1"	58.0	76.4	26.2	52.4	11.2	30.0	16	1"	—	—	26	34.5x3.55	M10x35	68.5	PV 2R1吸入口 PV2R1 inlet
F08-B									—	14	34.5					
F10-A	1-1/4"	57.7	84.7	30.2	58.7	12.0	40.0	16	1-1/4"	—	—	32	40x3.55	M10x45	68.5	PV 2R2吸入口 PV 2R3出口、PV 2R13 PV 2R23轴端泵出口 PV2R2 inlet PV2R3 port, PV2R13, PV2R23 shaft end pump port
F10-B									—	16	43.0					
F12-A	1-1/2"	70.0	96.0	35.7	69.9	13.8	40.0	18	1-1/2"	—	—	38	50x3.55	—	118	—
F12-B									—	18	49.1					
F16-A	2"	87.0	105.0	42.9	77.8	13.8	40.0	18	2"	—	—	51	65x3.55	M12x45	118	PV 2R3、PV 2R12 吸入口 PV2R3. PV2R12 inlet
F16-B									—	20	61.0					
F20-A	2-1/2"	96.0	116.0	50.8	88.9	13.8	45.0	18	2-1/2"	—	—	63	75x3.55	—	118	—
F20-B									—	22	77.1					
F24-A	3"	121.0	141.4	61.9	106.4	17.0	45.0	17	3"	—	—	76	85x3.55	M16x45	287	PV 2R13、PV 2R23 吸入口 PV2R13. PV2R23 inlet
F24-B									—	25	90.0					
F28-A	3-1/2"	136.0	155.0	69.9	120.7	17.0	50.0	17	3-1/2"	—	—	89	100x3.5	M16x40 M16x50	287	—
F28-B									—	28	102.8					
F32-A	4"	145.0	162.0	77.8	130.2	17.0	50.0	17	4"	—	—	102	115x3.5	M16x40 M16x50	287	—
F32-B									—	28	115.5					