

■ SQP系列单泵 SQP Series Single Pump

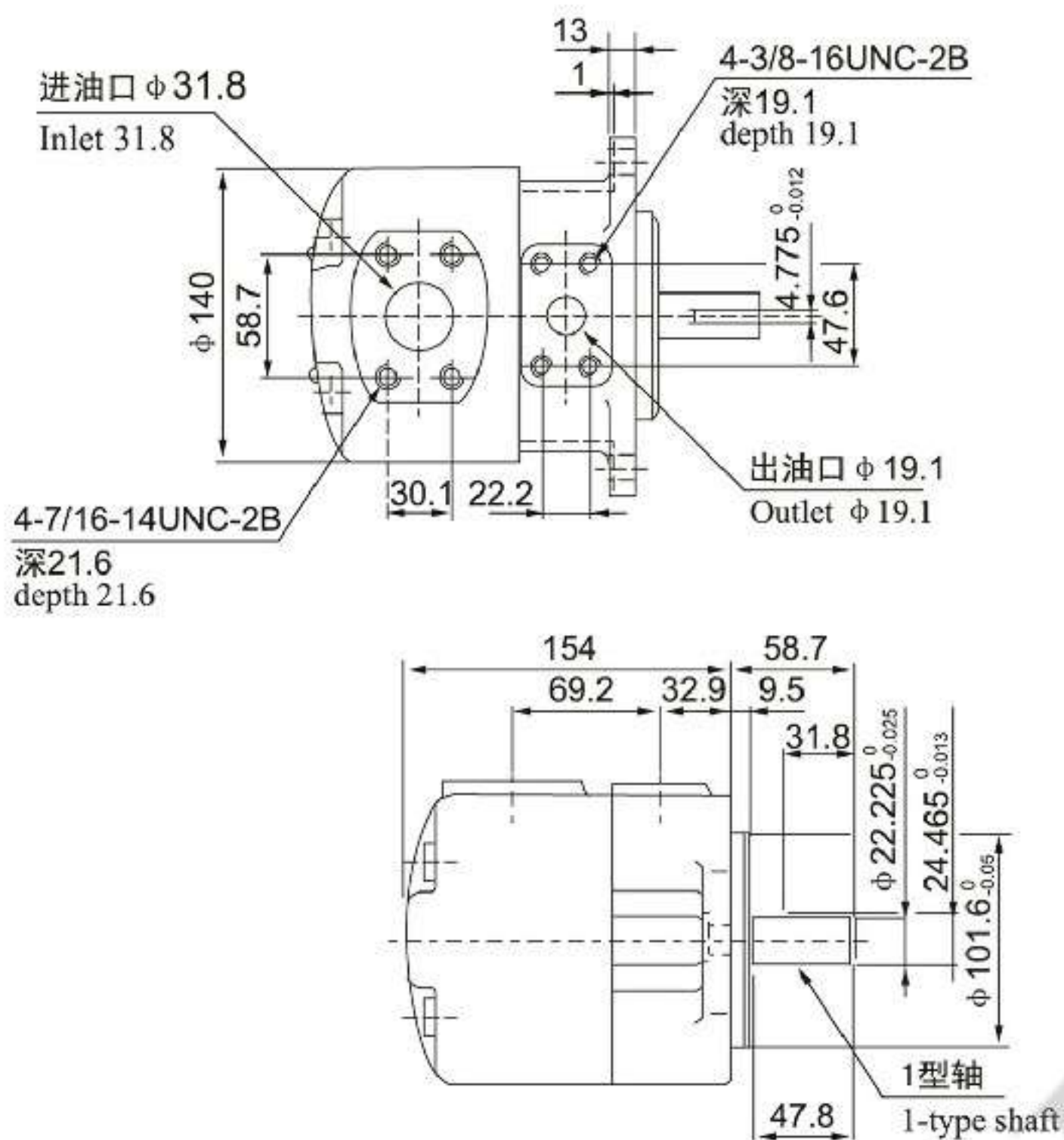
(F3-)	SQP2	-21	-86	C	(F)	(LH)	-18
前注 Front marks	泵壳号 Pump shell No	▲排量代号 Displacement codes	轴伸形式 Shaft extension	出油口位置 Outlet port position	安装型式 Mounting type	旋转方向 Direction of rotation	设计号 Designing No.
无标记: 丁腈橡胶 No mark: Nitrile rubber	SQP1	2,3,4,5,6,7,8,9 10,11,12,14	1-带键直轴 1-straight shaft with key	(从泵的盖端看) (from cover end pump) A-进口油对侧 A- Opposition of inlet B-从进口油逆时针90° B- counterclockwise 90° from inlet	无标记- 法兰安装 No mark- Flange mounting	(从泵的盖端看) (from cover end pump) LH-逆时针旋转 LH- counterclockwise rotation	15
	SQP2	10,11,12,14,15,17, 19,21					
F3: 氟橡胶 F3: Fluoro rubber	SQP3	21,25,30,32,35, 38,45	86-重型带键直轴 86-heavy-duty straight shaft with key	C-进口油同侧 C- the same side of inlet D-从进口油顺时针90° D- Clockwise 90° from inlet	F: 脚座安装型 Foot mounting	无标记 No mark 顺时针旋转 Clockwise rotation	18
	SQP4	42,45,50,57,60 66,75					

■ SQP系列双泵 SQP Series Double Pump

(F3)	SQP32	35	17	86	CD	(F)	-(LH)	18
前注 Front marks	系列号 Code of series	前泵排量代号 Displacement code of front pump	后泵排量代号 Displacement code of rear pump	轴伸形式 Shaft extension	油口位置 Pump position	安装型式 Mounting type	旋转方向 Direction of rotation	设计号 Designing No.
无标记: 丁腈橡胶 No mark: Nitrile rubber	SQP21	10,12,14,15,17, 19,21	2,3,4,5,6,7,8,9, 10,11,12,14	1-带键直轴 1- straight shaft with key	见下表 See as the following table	无标记- 法兰安装型 No marks- Flange mounting	(从泵的轴端看) (from shaft end pump) LH-逆时针旋转 LH-counterclockwise rotation	18
	SQP31	21,25,30,32,35, 38,45	2,3,4,5,6,7,8,9, 10,11,12,14					
F3: 氟橡胶 F3: Fluoro rubber	SQP32	21,25,30,32,35, 38,45	10,12,14,15,17, 19,21	86-重型带键直轴 86-heavy-duty straight shaft with key		F- 脚座安装型 Foot mounting	无标记- 顺时针旋转 No marks - clockwise	
	SQP41	42,45,50,57,60, 66,75	2,3,4,5,6,7,8,9, 10,11,12,14					
	SQP42	42,45,50,57,60, 66,75	10,12,14,15,17, 19,21					
	SQP43	42,45,50,57,60, 66,75	21,25,30,32,35, 38,45					

■ 安装连接尺寸 Installation Size

SQP1法兰安装型 SQP1 Flange mounting



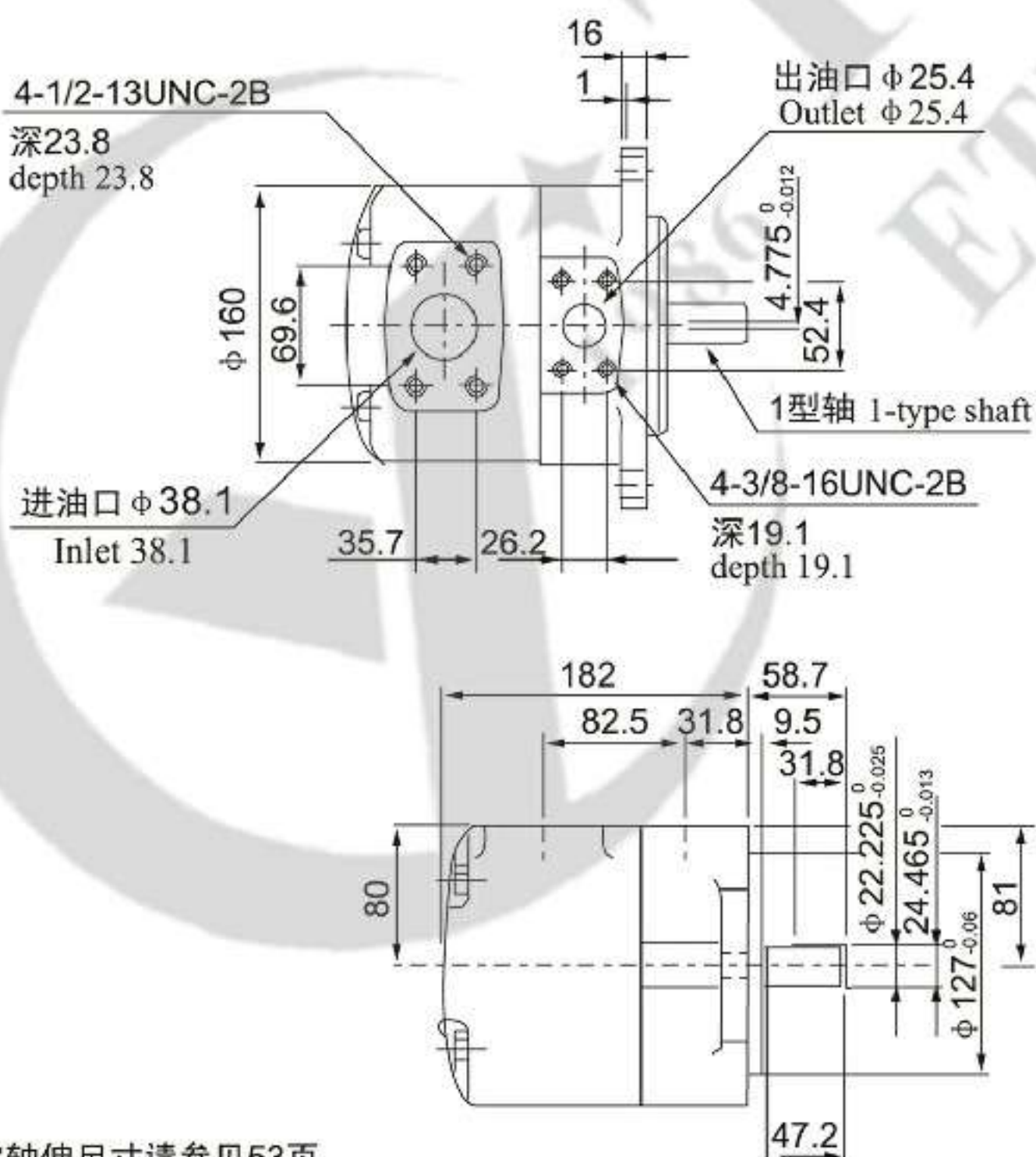
其它轴伸尺寸请参见53页  
Please refer to shaft extension sizes in page 53 for rest sizes

SQP1脚座安装型 SQP1 foot mounting



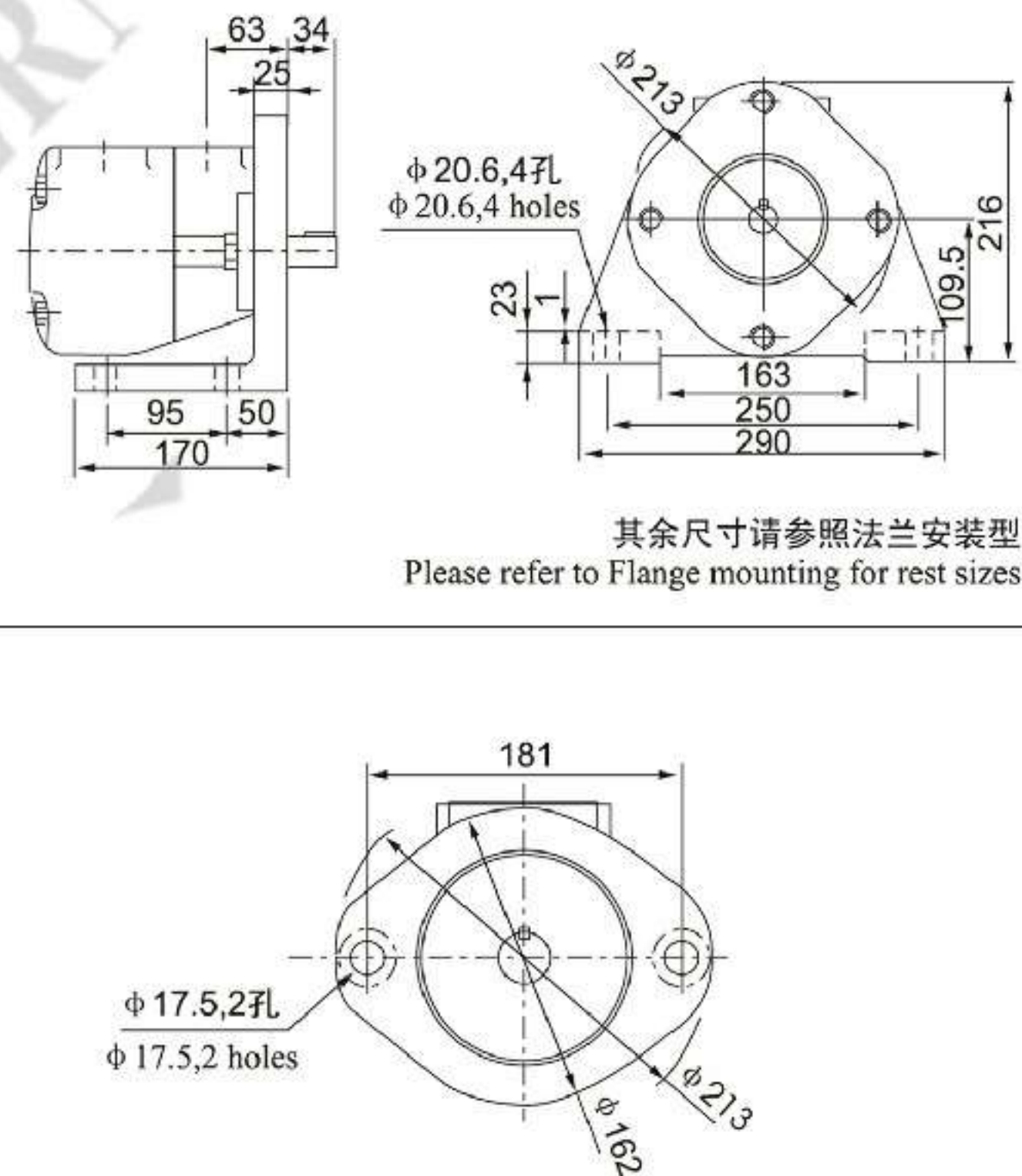
其余尺寸请参照法兰安装型  
Please refer to Flange mounting for rest sizes

SQP2法兰安装型 SQP2 Flange mounting



其它轴伸尺寸请参见53页  
Please refer to shaft extension sizes in page 53 for rest sizes

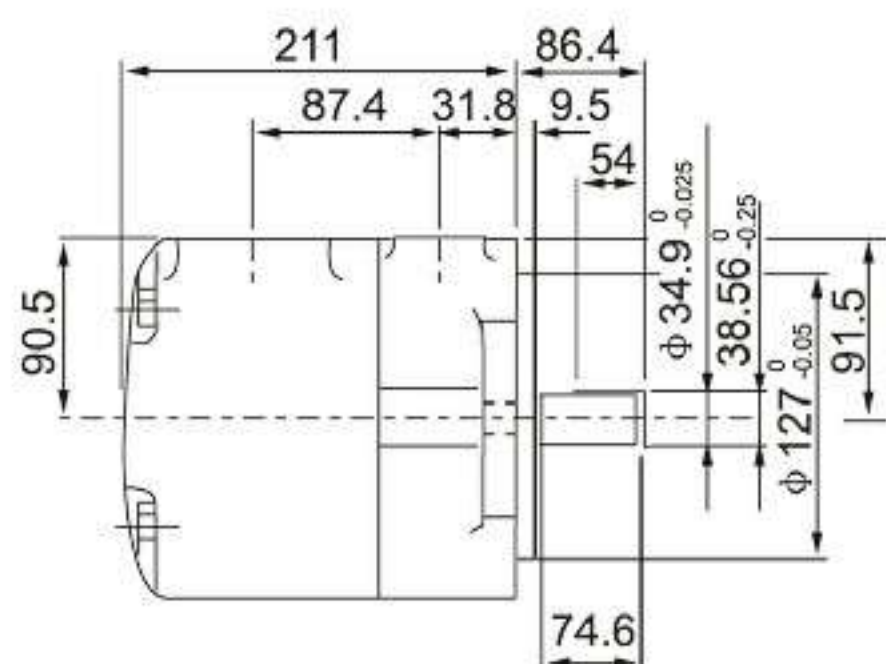
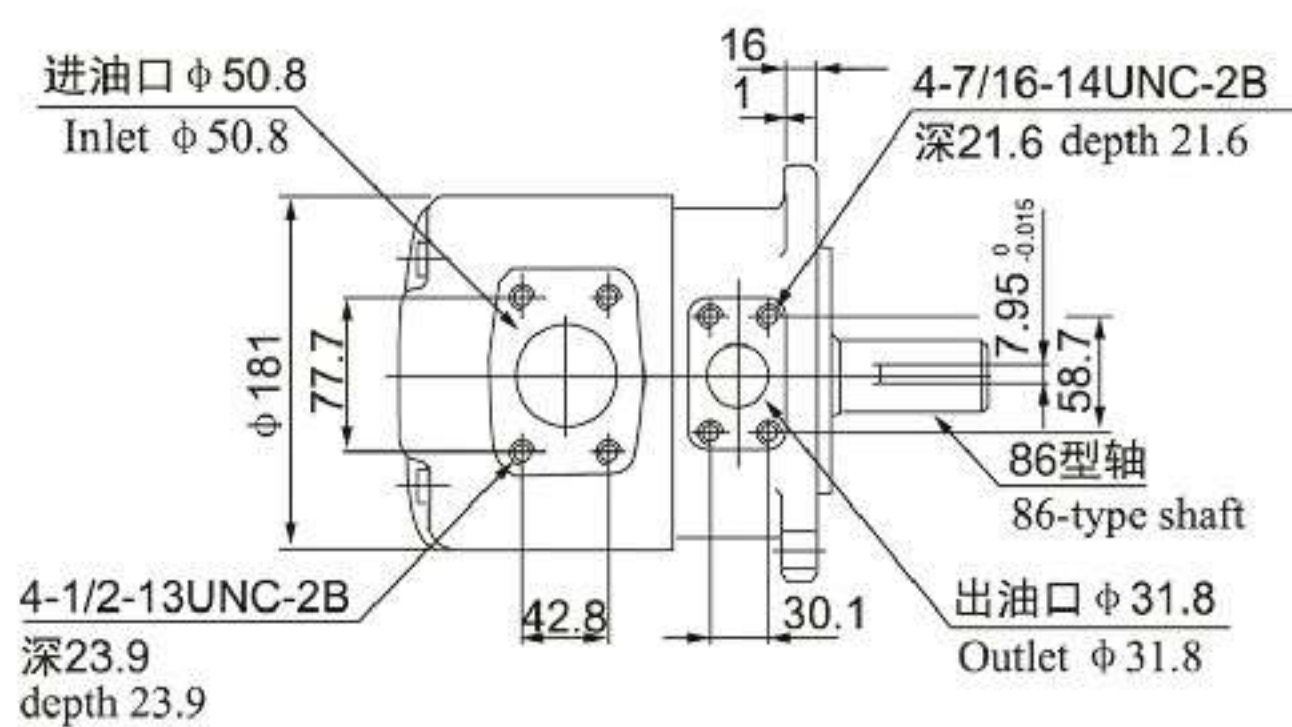
SQP2脚座安装型 SQP2 foot mounting



其余尺寸请参照法兰安装型  
Please refer to Flange mounting for rest sizes

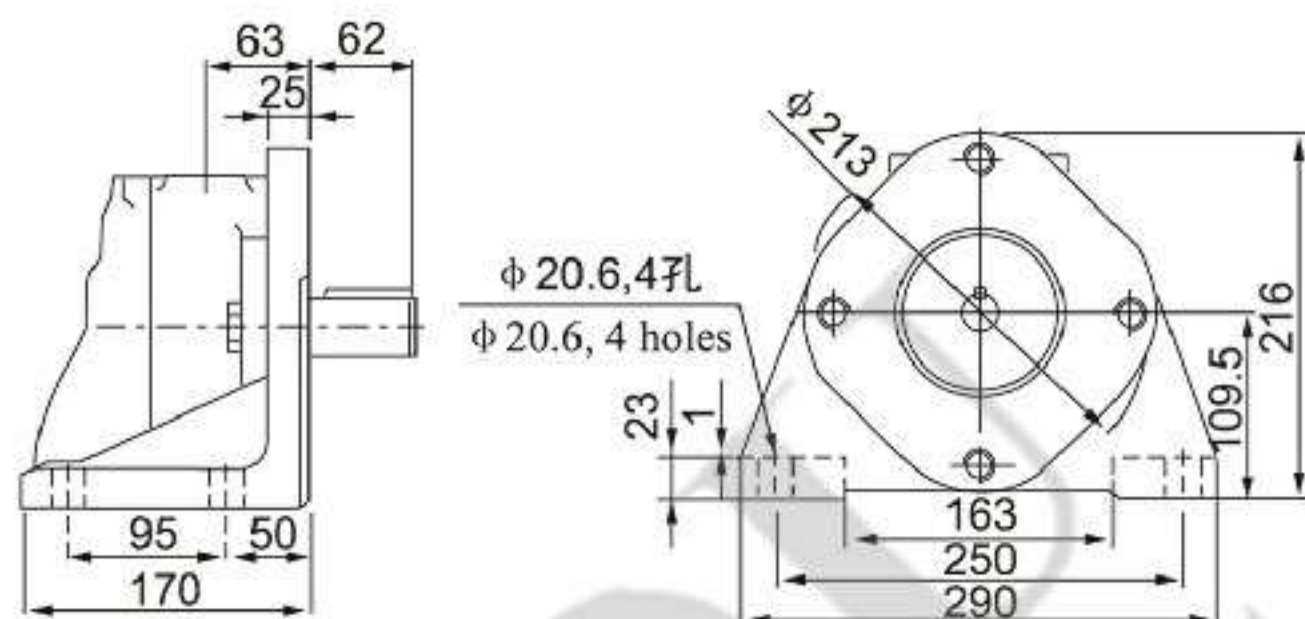
■ 安装连接尺寸 Installation Size

SQP3法兰安装型 SQP3 Flange mounting

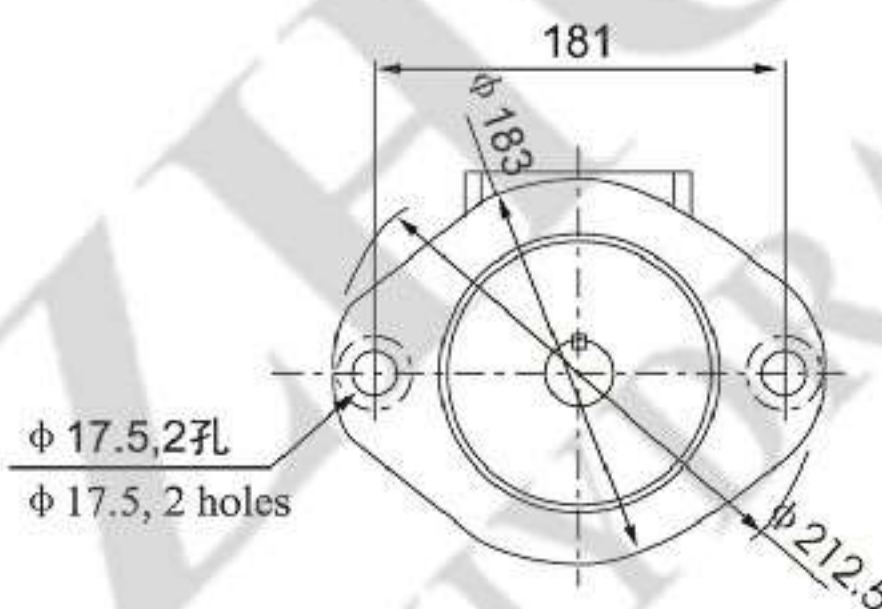


其它轴伸尺寸请参见53页  
Please refer to shaft extension sizes in page 53 for rest sizes

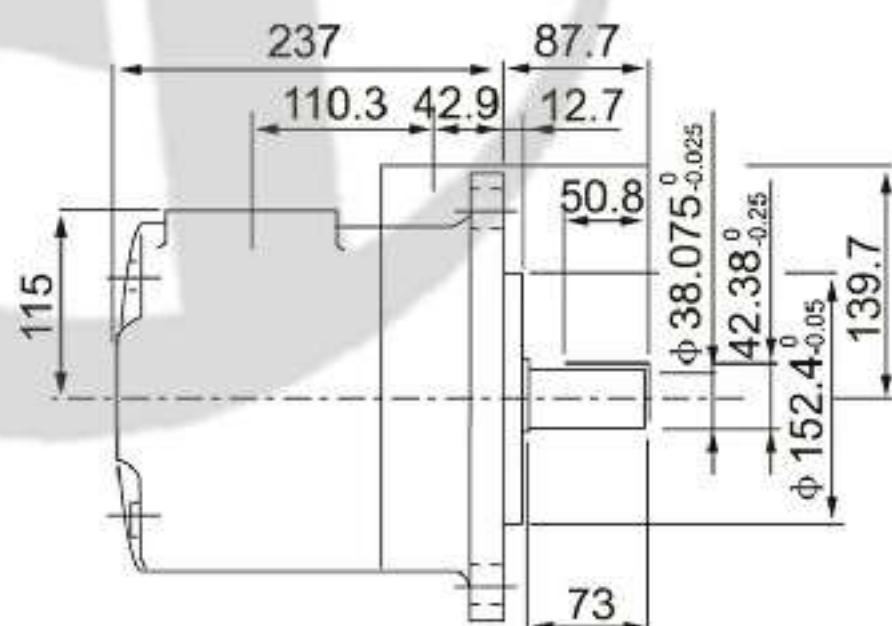
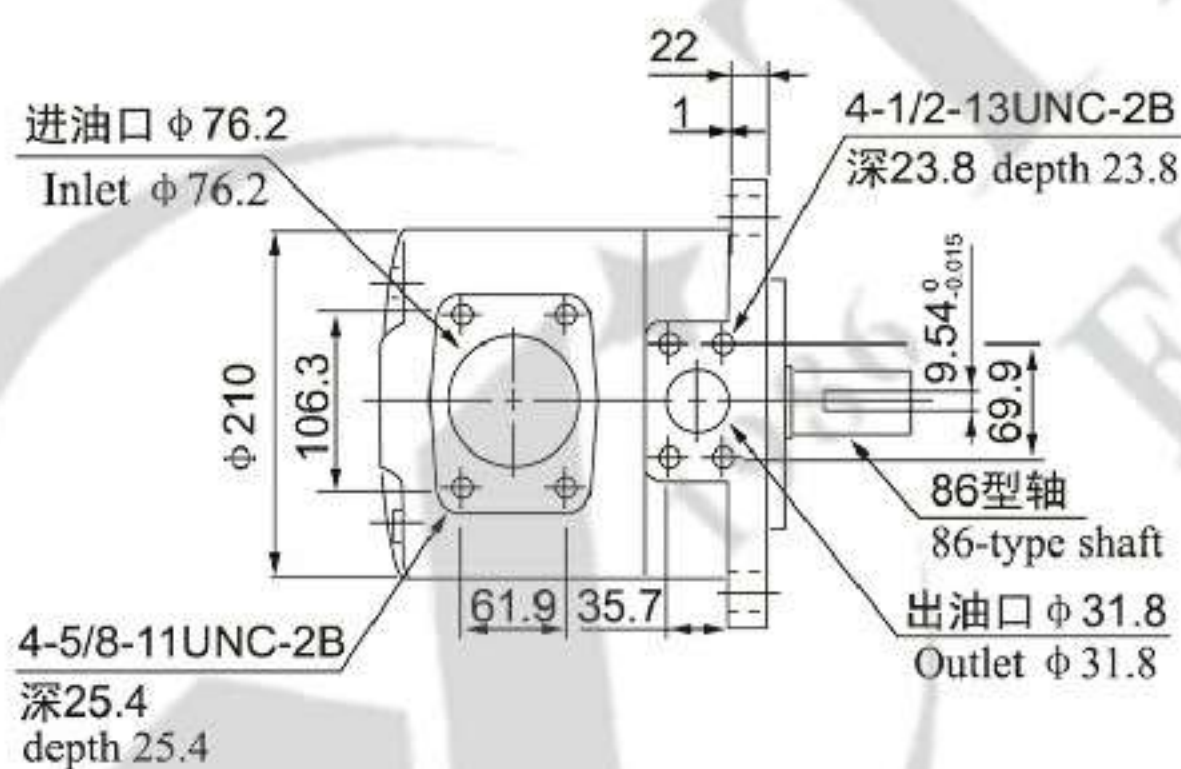
SQP3脚座安装型 SQP3 foot mounting



其余尺寸请参照法兰安装型  
Please refer to Flange mounting for rest sizes

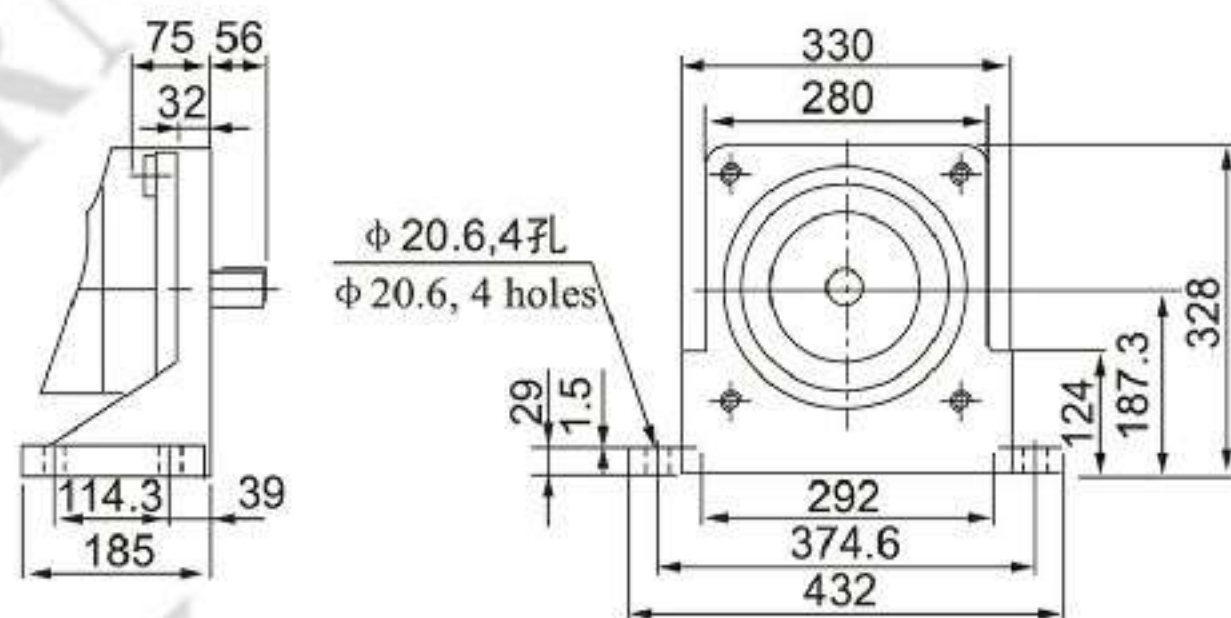


SQP4 法兰安装型 SQP4 Flange mounting

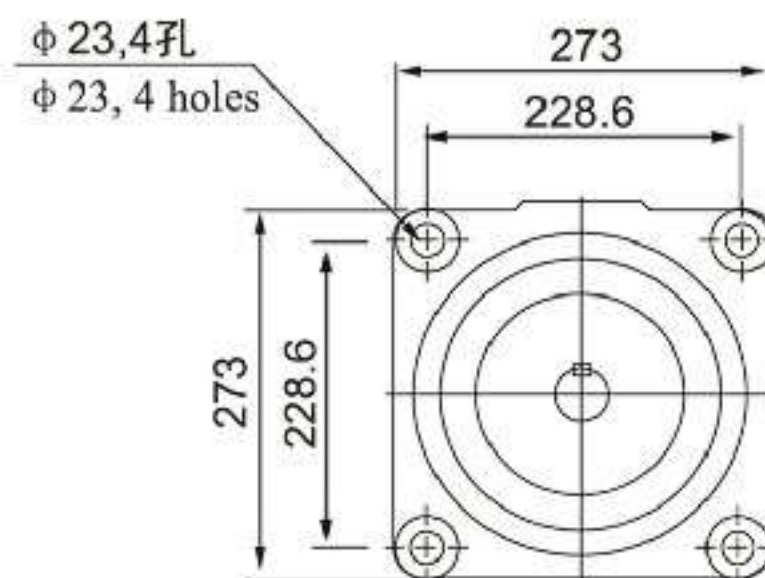


其它轴伸尺寸请参见53页  
Please refer to shaft extension sizes in page 53 for rest sizes

SQP4 脚座安装型 SQP4 foot mounting

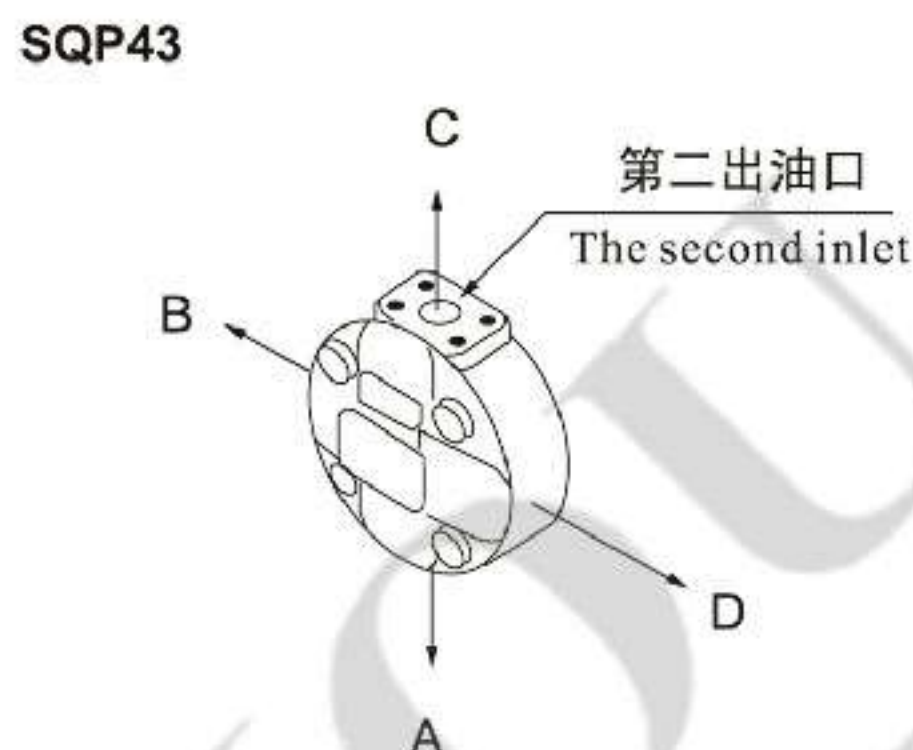
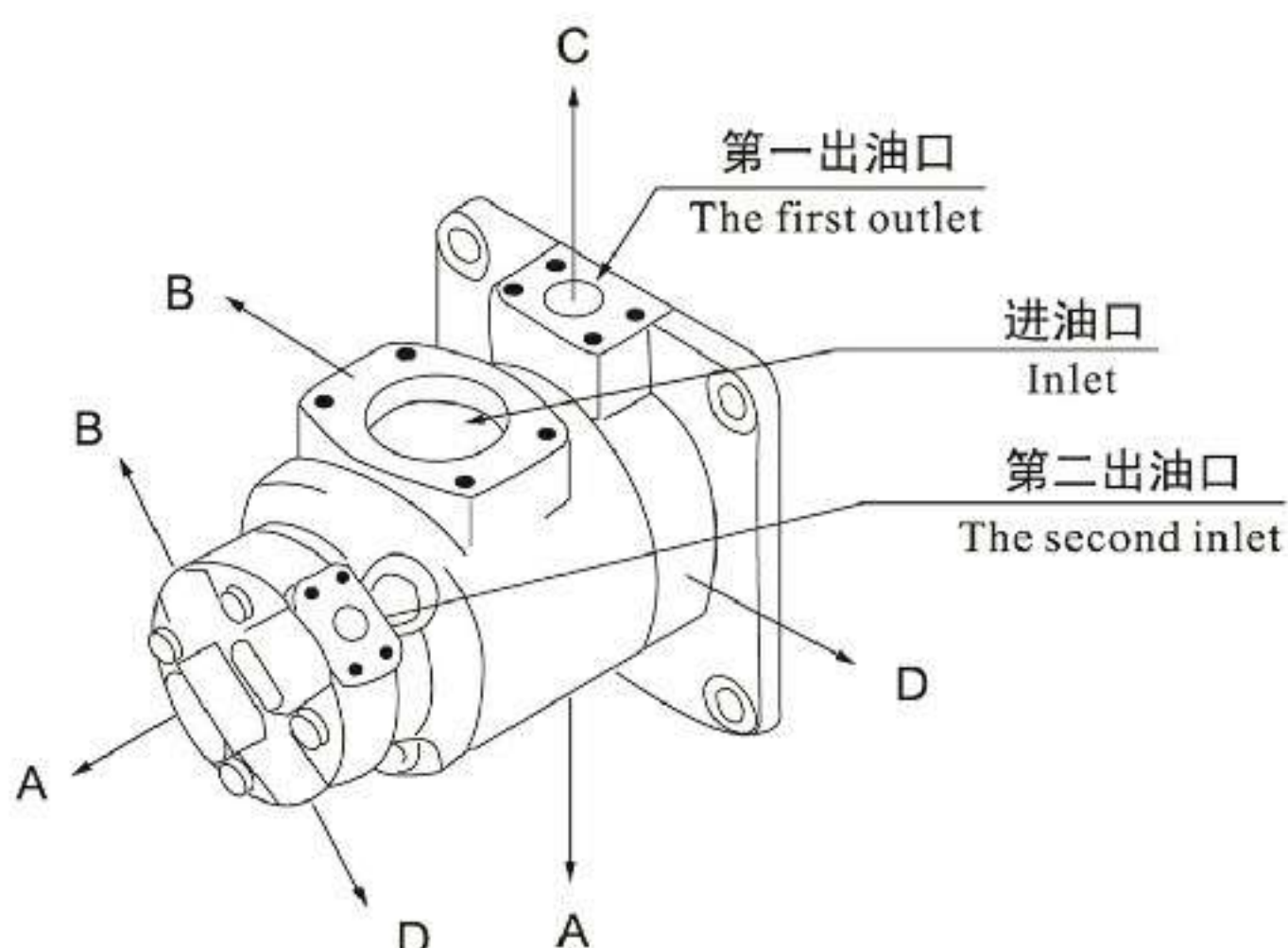


其余尺寸请参照法兰安装型  
Please refer to Flange mounting for rest sizes



■ 油口位置表（从泵的盖端看） Pump Oil Port Position (Viewed From Cover End Pump)

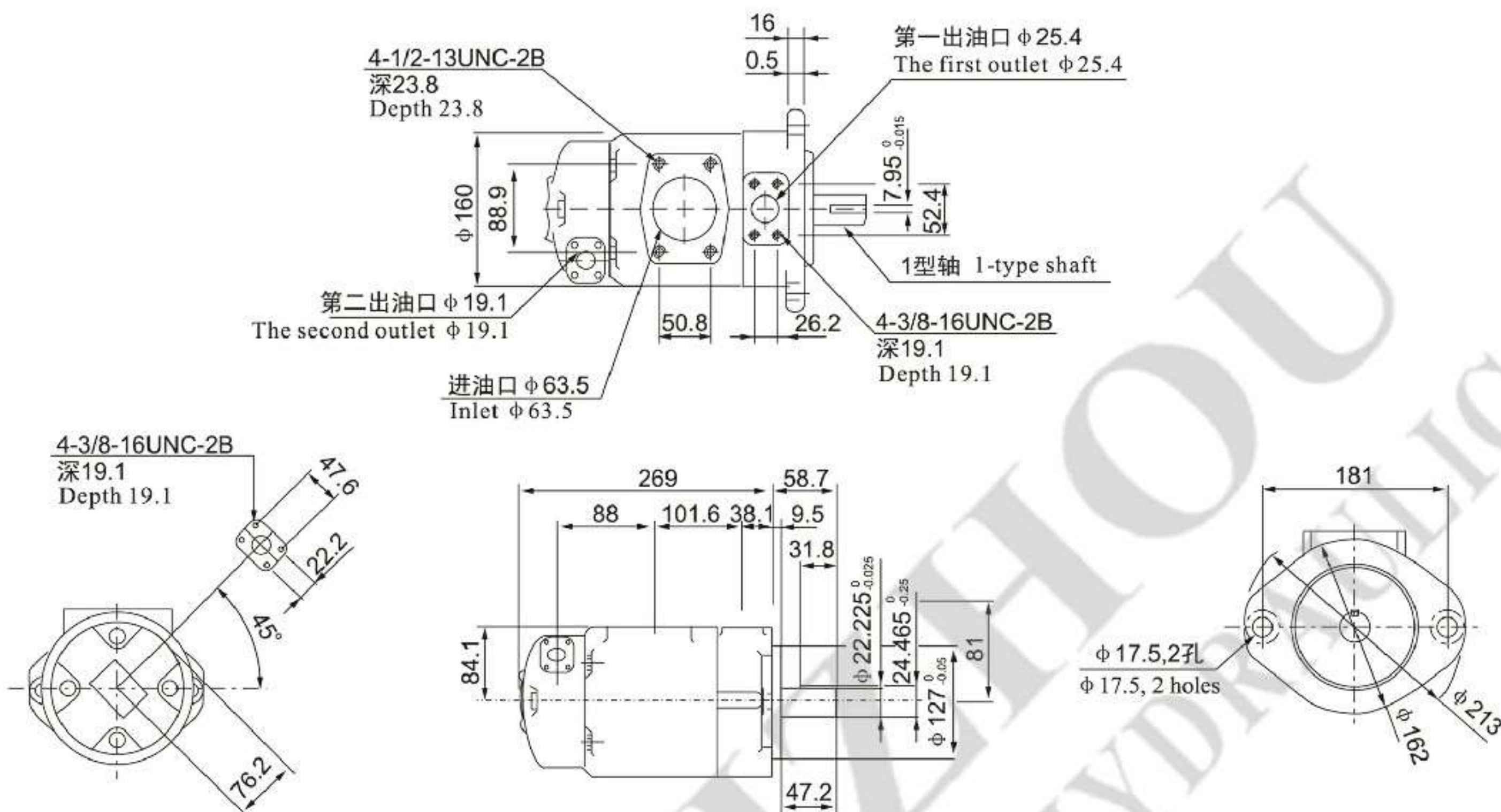
油口位置 Pump position



油口位置 Pump position		所有系列（除SQP43外） All series (except for SQP43)	SQP43
第一出油口 在进油口对侧 The first outlet is the opposition side of inlet.	AA	第二出油口在进油口逆时针转135° The second outlet is to counterclockwise rotation of 135° from inlet	第二出油口在进油口对侧 The second outlet is the opposition side of inlet.
	AB	第二出油口在进油口逆时针转45° The second outlet is to counterclockwise rotation of 45° from inlet	第二出油口在进油口逆时针转90° The second outlet is to counterclockwise rotation of 90° from inlet
	AC	第二出油口在进油口顺时针转45° The second outlet is to clockwise rotation of 45° from inlet	第二出油口在进油口同侧 The second outlet is the same side of inlet.
	AD	第二出油口在进油口顺时针转135° The second outlet is to clockwise rotation of 135° from inlet	第二出油口在进油口顺时针转90° The second outlet is to clockwise rotation of 90° from inlet
第一出油口 从进油口逆 时针转90° The first outlet is to counterclockwise rotation of 90° from inlet	BA	第二出油口在进油口逆时针转135° The second outlet is to counterclockwise rotation of 135° from inlet	第二出油口在进油口对侧 The second outlet is the opposition side of inlet.
	BB	第二出油口在进油口逆时针转45° The second outlet is to counterclockwise rotation of 45° from inlet	第二出油口在进油口逆时针转90° The second outlet is to counterclockwise rotation of 90° from inlet
	BC	第二出油口在进油口顺时针转45° The second outlet is to clockwise rotation of 45° from inlet	第二出油口在进油口同侧 The second outlet is the same side of inlet.
	BD	第二出油口在进油口顺时针转135° The second outlet is to clockwise rotation of 135° from inlet	第二出油口在进油口顺时针转90° The second outlet is to clockwise rotation of 90° from inlet
第一出油口 在进油口同侧 The first outlet is the same side of inlet.	CA	第二出油口在进油口逆时针转135° The second outlet is to counterclockwise rotation of 135° from inlet	第二出油口在进油口对侧 The second outlet is the opposition side of inlet.
	CB	第二出油口在进油口逆时针转45° The second outlet is to counterclockwise rotation of 45° from inlet	第二出油口在进油口逆时针转90° The second outlet is to counterclockwise rotation of 90° from inlet
	CC	第二出油口在进油口顺时针转45° The second outlet is to clockwise rotation of 45° from inlet	第二出油口在进油口同侧 The second outlet is the same side of inlet.
	CD	第二出油口在进油口顺时针转135° The second outlet is to clockwise rotation of 135° from inlet	第二出油口在进油口顺时针转90° The second outlet is to clockwise rotation of 90° from inlet
第一出油口 从进油口顺 时针转90° The first outlet is to clockwise rotation of 90° from inlet	DA	第二出油口在进油口逆时针转135° The second outlet is to counterclockwise rotation of 135° from inlet	第二出油口在进油口对侧 The second outlet is the opposition side of inlet.
	DB	第二出油口在进油口逆时针转45° The second outlet is to counterclockwise rotation of 45° from inlet	第二出油口在进油口逆时针转90° The second outlet is to counterclockwise rotation of 90° from inlet
	DC	第二出油口在进油口顺时针转45° The second outlet is to clockwise rotation of 45° from inlet	第二出油口在进油口同侧 The second outlet is the same side of inlet.
	DD	第二出油口在进油口顺时针转135° The second outlet is to clockwise rotation of 135° from inlet	第二出油口在进油口顺时针转90° The second outlet is to clockwise rotation of 90° from inlet

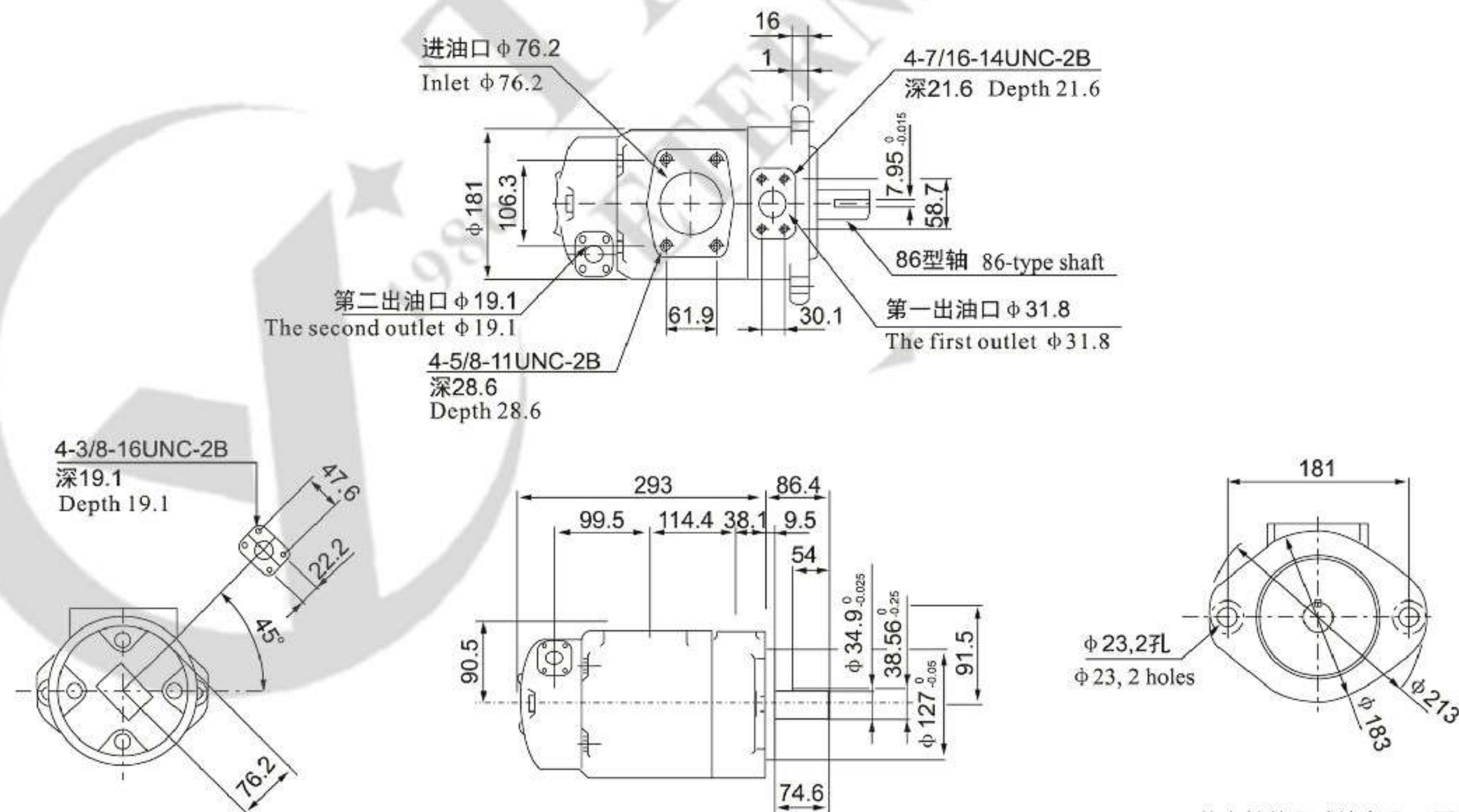
■ 安装连接尺寸 Installation Size

SQP21法兰安装型 SQP21 Flange mounting



其它轴伸尺寸请参见53页  
Please refer to shaft extension sizes in page 53 for rest sizes

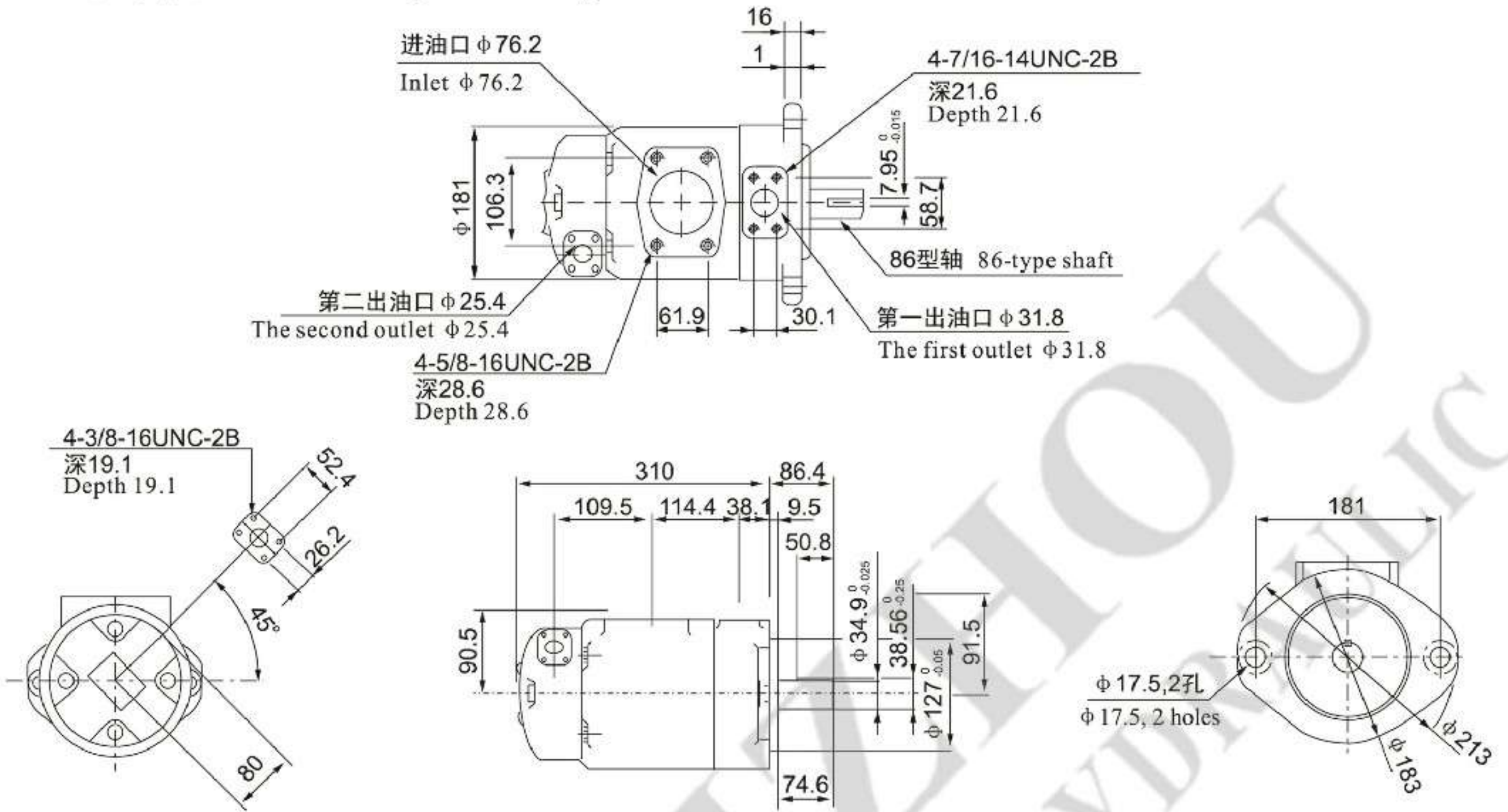
SQP31 法兰安装型 SQP31 Flange mounting



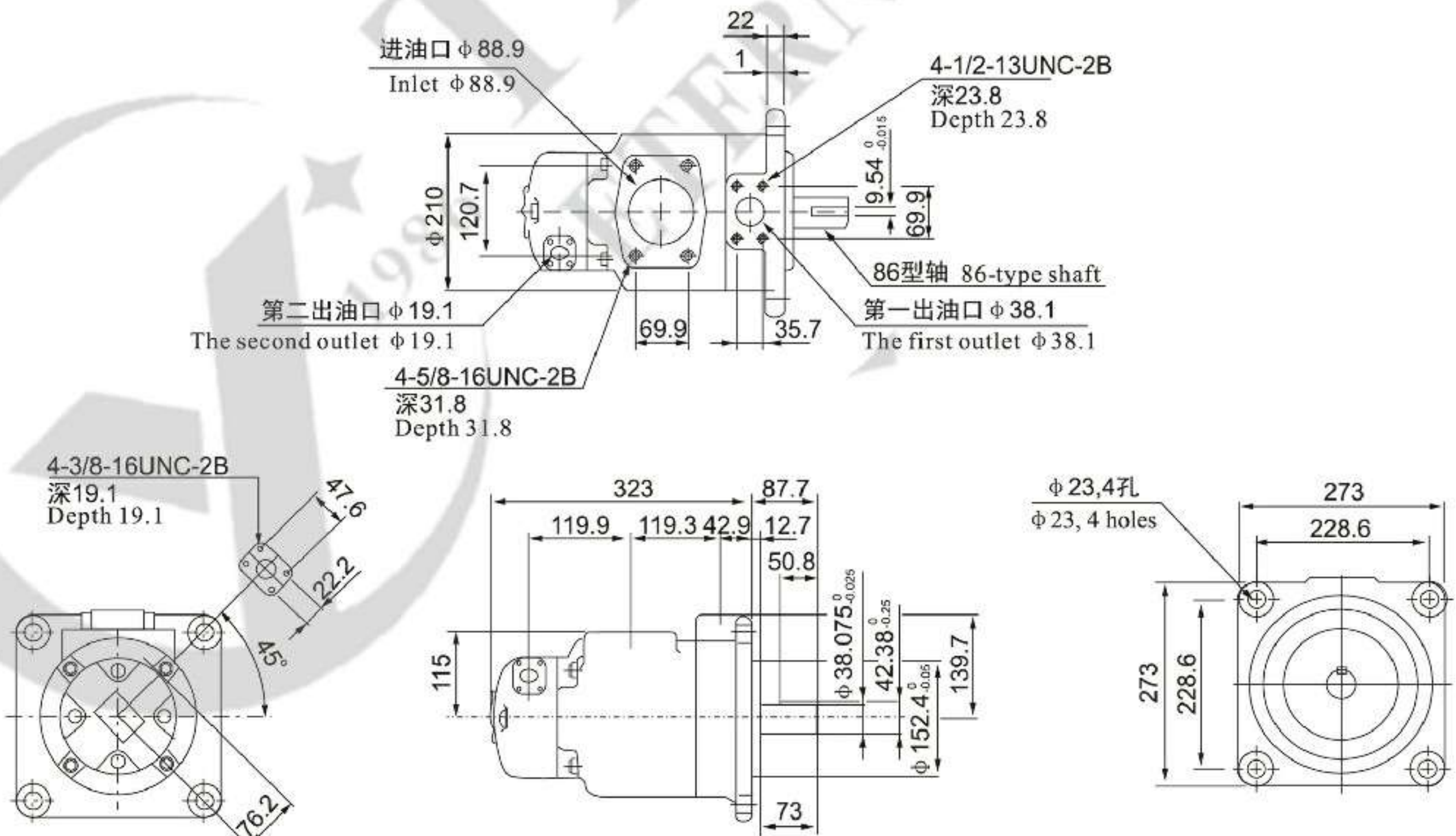
其它轴伸尺寸请参见53页  
Please refer to shaft extension sizes in page 53 for rest sizes

■ 安装连接尺寸 Installation Size

**SQP32法兰安装型 SQP32 Flange mounting**

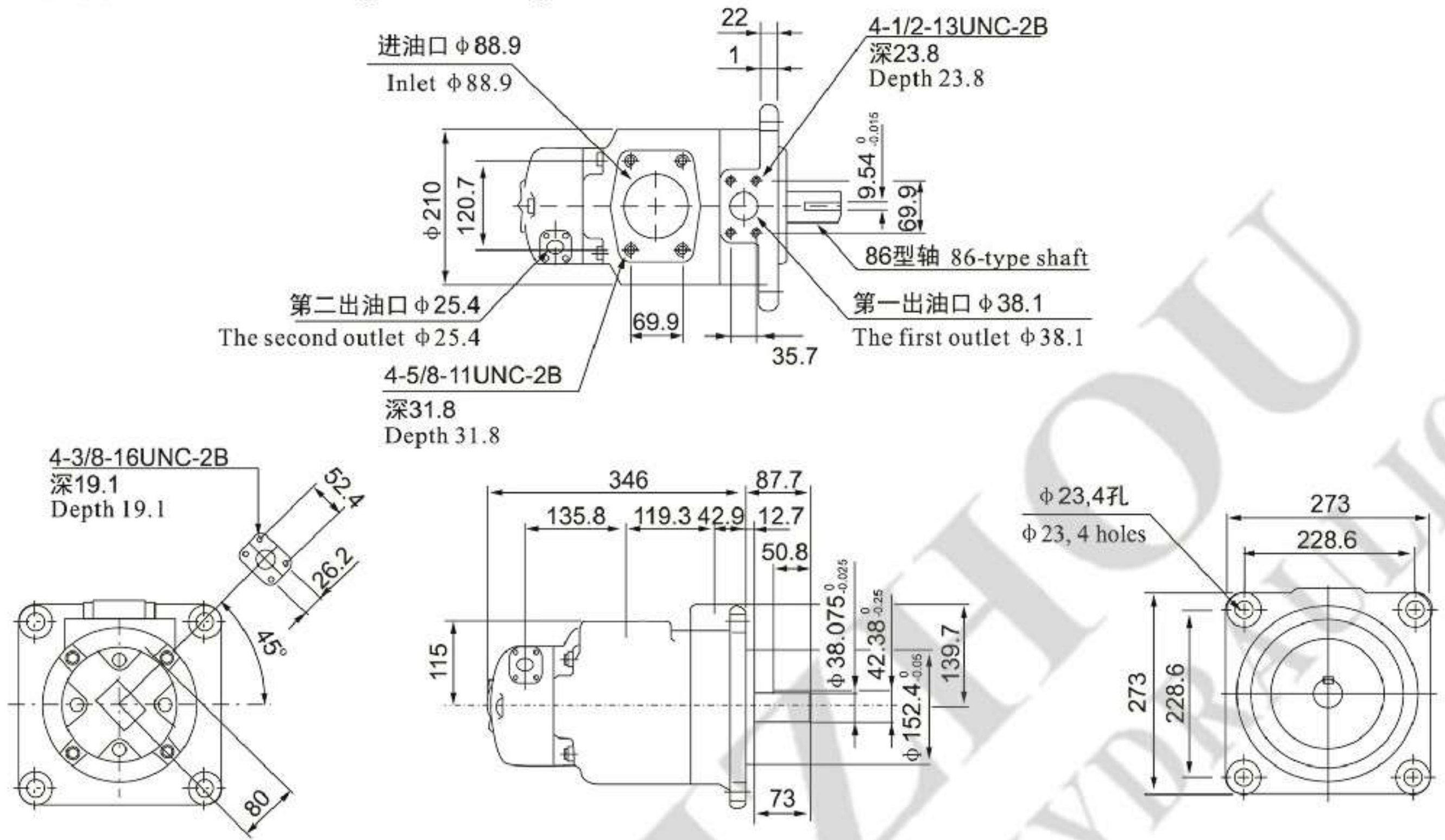


**SQP41法兰安装型 SQP41 Flange mounting**



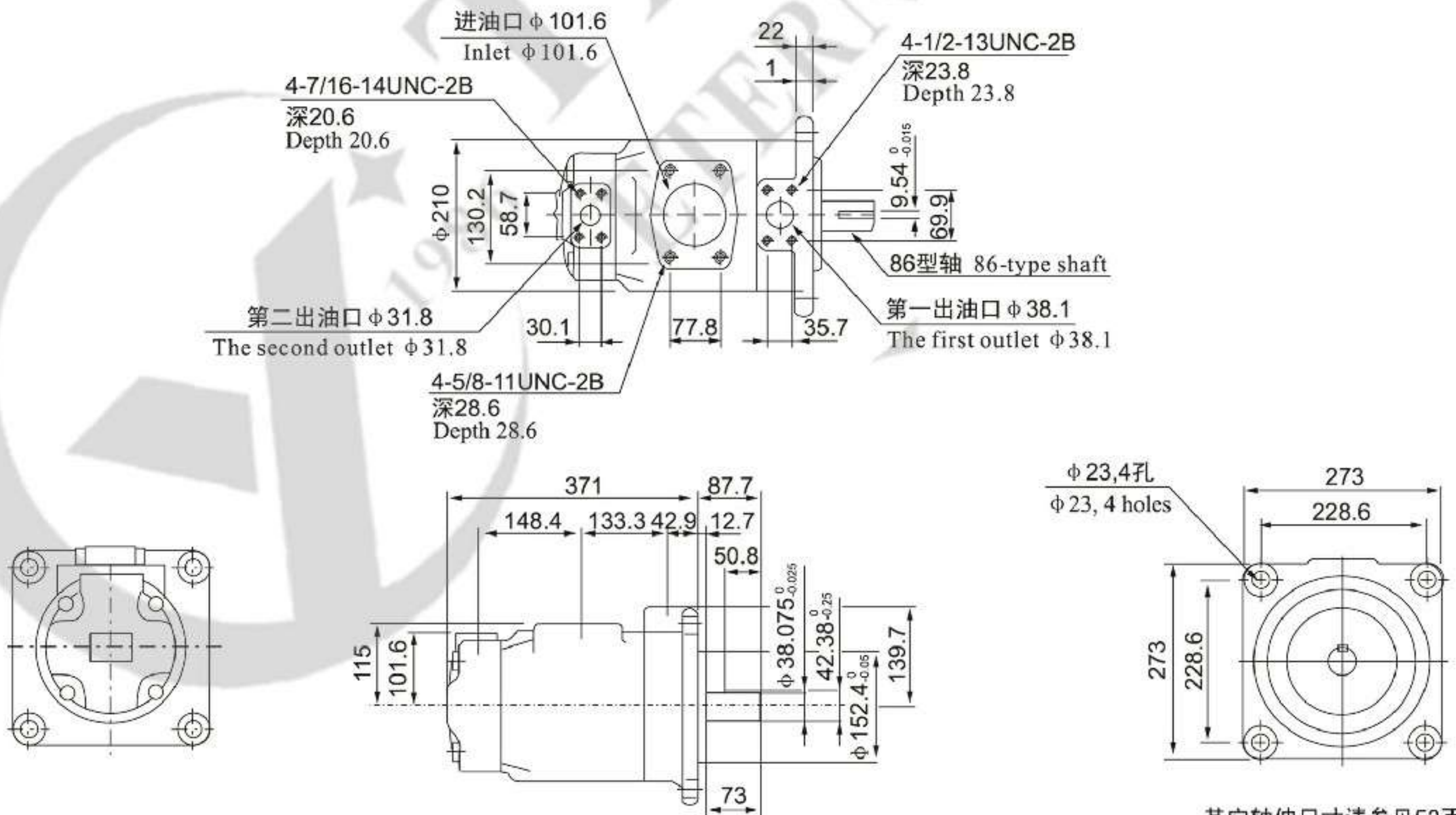
■ 安装连接尺寸 Installation Size

SQP42法兰安装型 SQP42 Flange mounting



其它轴伸尺寸请参见53页  
Please refer to shaft extension sizes in page 53 for rest sizes

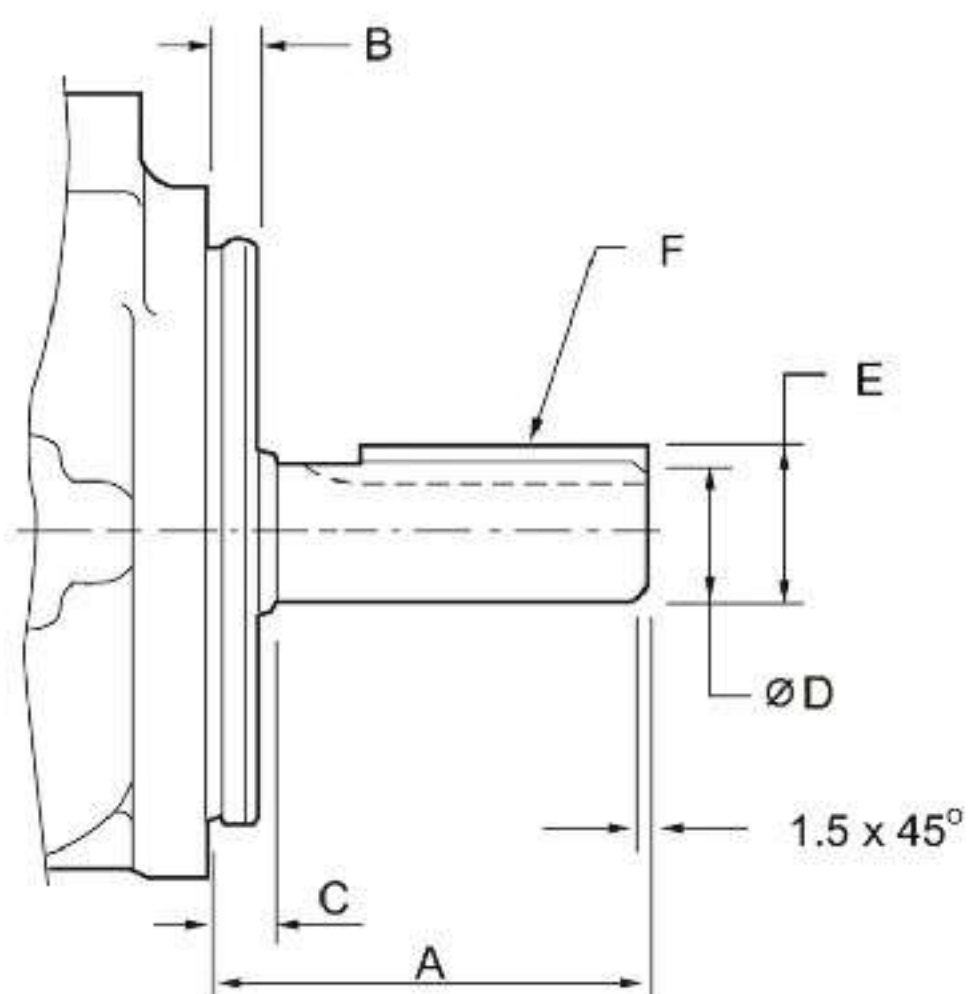
SQP43 法兰安装型 SQP43 Flange mounting



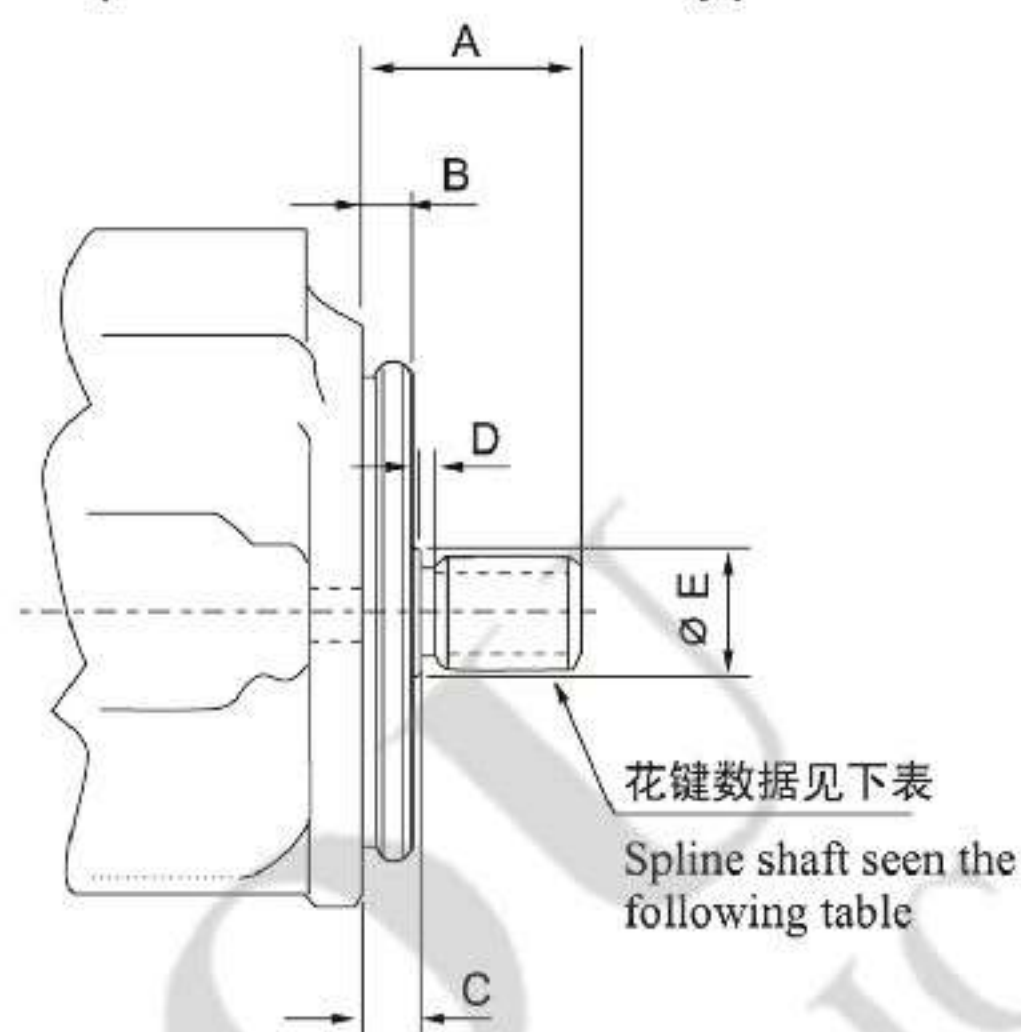
其它轴伸尺寸请参见53页  
Please refer to shaft extension sizes in page 53 for rest sizes

■ V/VQ/SQP系列叶片泵可选轴伸形式 V/VQ/SQP Series Vane Pump Shaft Extension Type

平键直轴  
Straight shaft



花键轴  
Spline shaft



平键直轴 Straight shaft with key

型号 Models			轴伸代号 Shaft code	A	B	C	D	E	F键宽×长 F key width × length
V	VQ	SQP							
20V	20VQ	SQP1	1	59	9.53	12.1	22.23/22.20	24.5/24.4	4.76×32
25V	25VQ	SQP2	1	59	9.53	11.1	22.23/22.20	24.5/24.4	4.76×32
2520V	2520VQ	SQP21	86	78	9.53	11.1	25.37/25.35	28.3/28.1	6.36×50.8
35V	35VQ	SQP3	1	73.2	9.53	11.1	31.75/31.70	35.36/34.10	7.94×38.1
352*V	352*VQ	SQP3*	86	86	9.53	11.1	34.90/34.67	38.6/38.3	7.94×54
45V	45VQ	SQP4	1	62	12.7	14.22	31.75/31.70	35.36/34.10	7.94×28.5
45**V	45**VQ	SQP4*	86	87.4	12.7	14.22	38.07/38.05	42.4/42.1	9.54×50.8

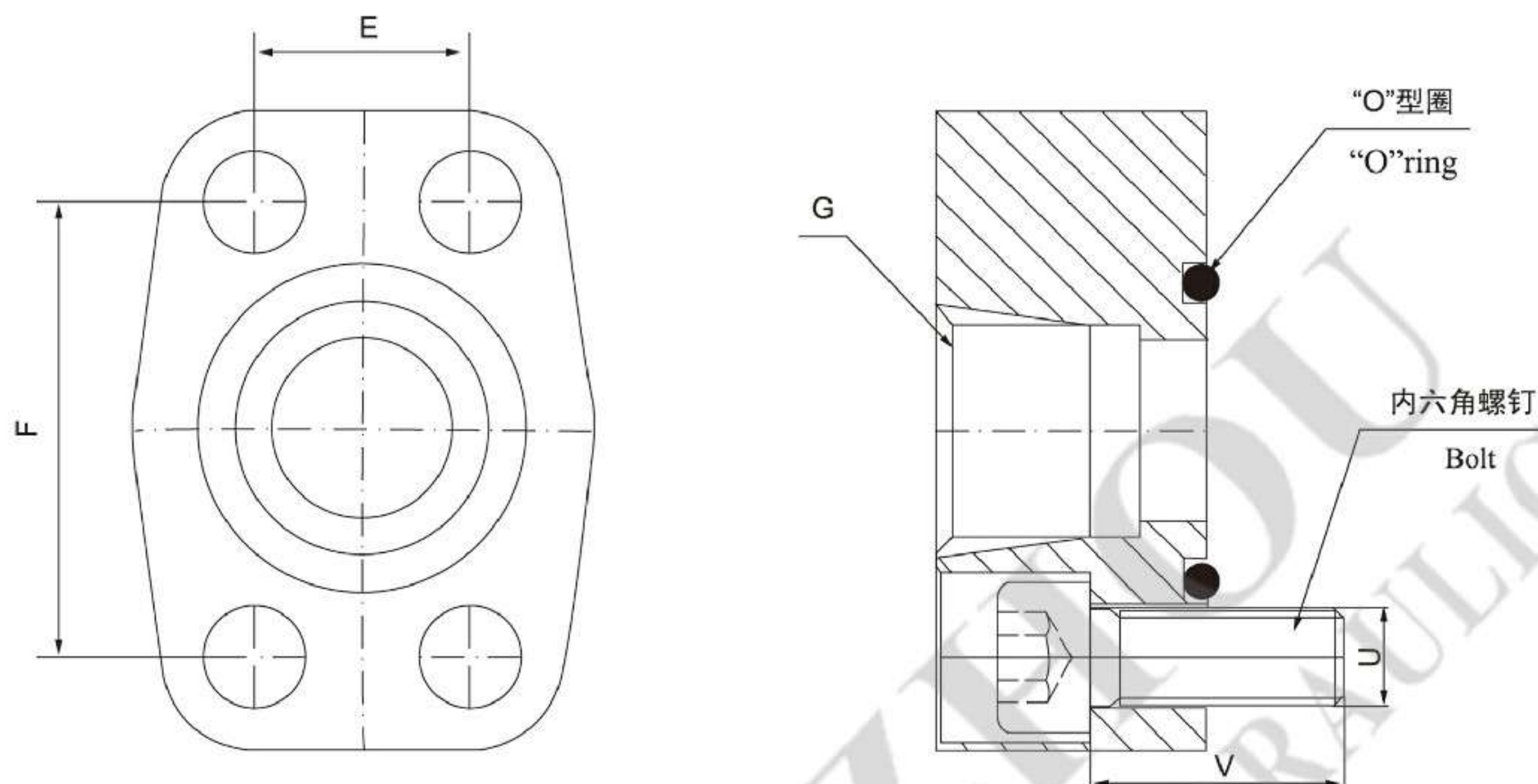
花键轴 Spline shaft

型号 Models		轴伸代号 Shaft code	A	B	C	D	E	花键数据 (见下表) Spline data (see the following table)
V	VQ							
20V	20VQ	151	41.1	9.53	11.1	3.9	27.8	A
25V	25VQ	11	44.5	9.53	11.1	3.9	27.8	A
2520V	2520VQ							
35V	35VQ	11	58.7	9.53	11.1	6.35	35.1	C
352*V	352*VQ							
45V	45VQ	11	61.9	12.7	14.3	9.7	39.6	C
45**V	45**VQ							

花键数据表 (渐开线花键) Spline data (Involute spline)

花键数据标记 Spline data tags	齿数 Teeth No	径节 Diametral pitches	大径 Major diameters	成形直径 Forming diameters	小径 Minor diameters	平齿根配合 Match with flat teeth
A	13	16/32	22.17 22.15	19.03	18.63 18.35	大径配合 Match with major diameter
C	14	12/24	31.7 31.67	27.2	26.99 26.64	大径配合 Match with major diameter

■ V/VQ 泵配用法兰连接尺寸 V/VQ Flange Installation Size



配泵的型号 Models	尺寸 Dimension (mm)			内六角螺钉 Bolt		“O”型圈 (内径×线径) “O”ring
	E	F	G	U	V (mm)	
20V (VQ) 出油口 Outlet	22.22	47.6	3/4	3/8-16UNC	30	28×3.55
25V (VQ) 出油口 Outlet	26.2	52.4	1	3/8-16UNC	30	34.5×3.55
35V (VQ) 出油口 Outlet	30.2	58.7	1 1/4	7/16-14UNC	35	40×3.55
45V (VQ) 出油口 Outlet 20V (VQ), 25V (VQ) 出油口 Outlet	35.7	69.9	1 1/2	1/2-13UNC	40	50×3.55
35V (VQ) 进油口 inlet	42.9	77.8	2	1/2-13UNC	40	63.09×3.55
45V (VQ) 3520V (VQ), 3525V (VQ) 出油口 Outlet	62	106.4	3	5/8-11UNC	45	82.5×3.55
2520V (VQ) 进油口 inlet	50.8	88.9	2 1/2	1/2-13UNC	45	71×3.55
4520 (4525) V (VQ) 进油口 inlet	69.9	120.6	3 1/2	5/8-11UNC	50	100×3.55
4535V (VQ) 进油口 inlet	77.8	130.2	4	5/8-11UNC	50	115×3.55