

Show China Eternal Quality To The World

European Truck Products



COMPANY PROFILE



Eternal Hydraulic belongs to Eternal Group, which is a International Well-known Professional Hydraulic Enterprise with 6 Own Manufacturing Bases in 2023, and we will complete our 12+ Manufacturing Bases in future 5 years to become the No.1 Hydraulic Alliance Group Enterprise.

Eternal Hydraulic are integrating Design&Develop&Manufacturing&Marketing for Hydraulic Components, and with more than 16+ years experience in Hydraulic Field.

Eternal Hydraulic commit ourselves to the No.1 Global One-Stop Mall in Hydraulic Field, Our products are widely used in Agricultural Machinery, Forestry Machinery, Dump Trucks & Special Vehicles, Municipal Sanitation Machinery, Construction Machinery, Logistics&Forklift Machinery, Industrial Equipment, Mining machinery, Marine Machinery and Military Machinery etc, with 98% Good Quality&Price Feed-back from market.

Eternal Hydraulic can be used in all Equipments which need Hydraulic Power.

Eternal Hydraulic keep good cooperative relationship with most of International Well-known Hydraulic Companies to provide best Service to our all regular customers.

Eternal Hydraulic firmly believes that "Only the Best can Satisfied the Best", become the First and Best Purchase Choice of Hydraulic Components in all over the World.

Inviting all ability Partners to join in us to complete 86+ Strategic Partners in all over the World.

ETERNAL HYDRAULIC PUMP MANUFACTURING BASE

● *No. of Workers: 180+* ● *Factory area: 40,000m²*



MAIN PRODUCTS

Gear Pump: Parker, Hyva, Europe Series, Hydrosila Series...

Vane Pump: Eaton Vickers, Denison, Yuken, Tokimec Series...

CERTIFICATES





EXHIBITION



EXHIBITION



SAMPLE ROOM



SAMPLE ROOM

?NNJGA?RGMLQ



Agricultural Machinery



Forklift



Sanitation Machinery



Forestry Machinery



Construction Machinery



Dump Truck



Industry



Mining Machine



Ship Machinery



■ EHY Series Single Pump Model Code

| Series | Front Cover | Displacement | Rotation | Port Position | Shaft | Port Size |
|--------|----------------------------------|---------------------------------------|-------------------------------------|--|--|-----------------------------|
| EHY30 | | 25, 32, 40, 50, 63 | | R2 | | |
| EHY35 | 3H: UNI 3 Bolt 4H: ISO 4 Bolt | 40, 50, 63, 82 | R: CW L: CCW W: Bidirectional | S2, SR2, SR21, R2, SR3, SR31, SR32, SR33, SR4 | Omit: Standard Special: See instructions for details | Omit: G NPT PT UNF |
| EHY40 | | 63, 75, 80, 90, 107, 115, 145, 160 | | | | |

■ EHY Series Port Position



S2 (Two ports)



SR2 (Two ports)



SR21 (Two ports)



R2 (Two ports)



SR3 (Three ports)



SR31 (Three ports)



SR32 (Three ports)



SR33 (Three ports)

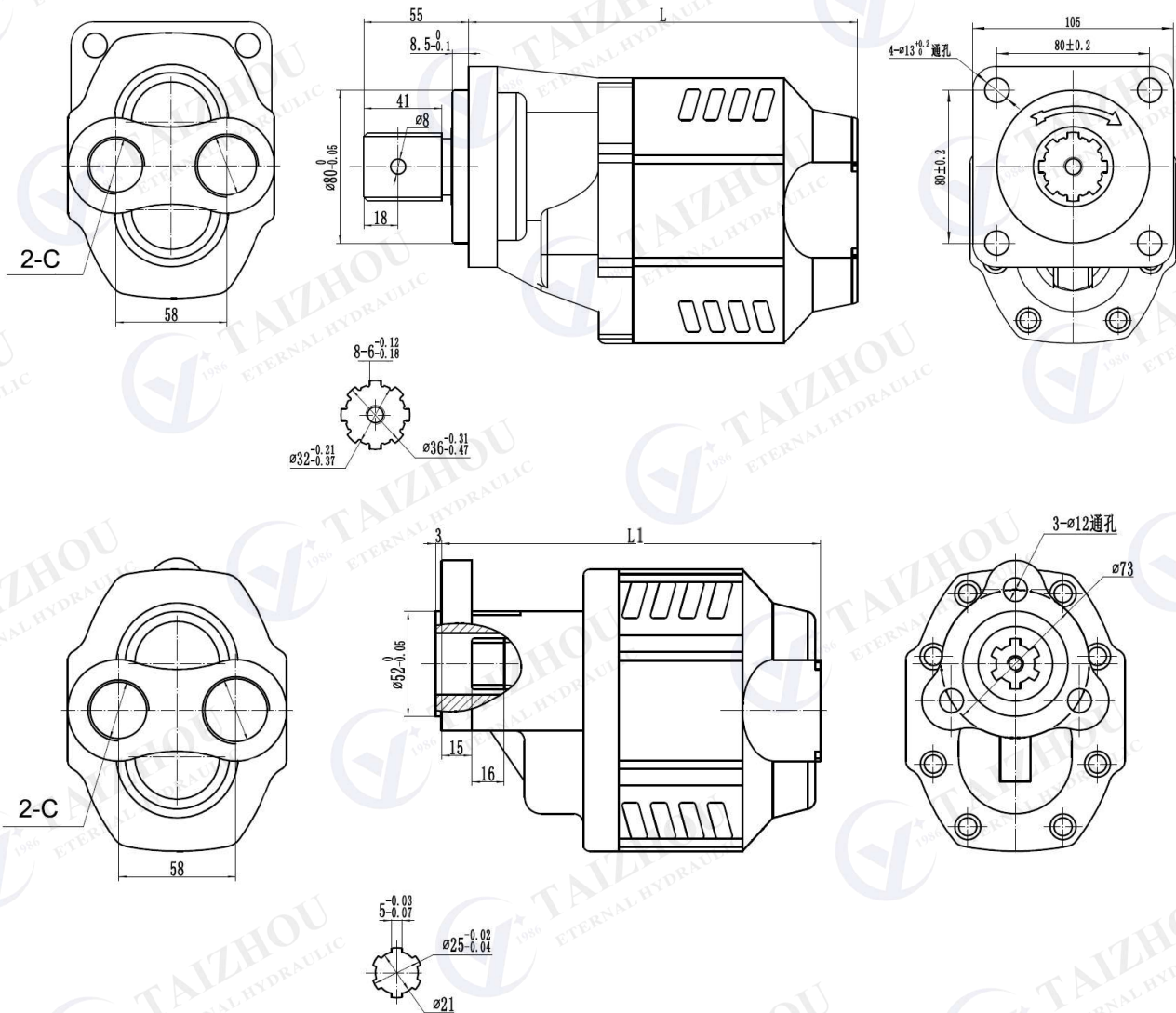


SR4 (Four ports)

■ EHY30 Model Code

| Series | Front Cover | Displacement | Rotation |
|--------------|----------------------------------|--------------------|-------------------------------------|
| EHY30 | 3H: UNI 3 Bolt 4H: ISO 4 Bolt | 25, 32, 40, 50, 63 | R: CW L: CCW W: Bidirectional |

■ EHY30 Dimension

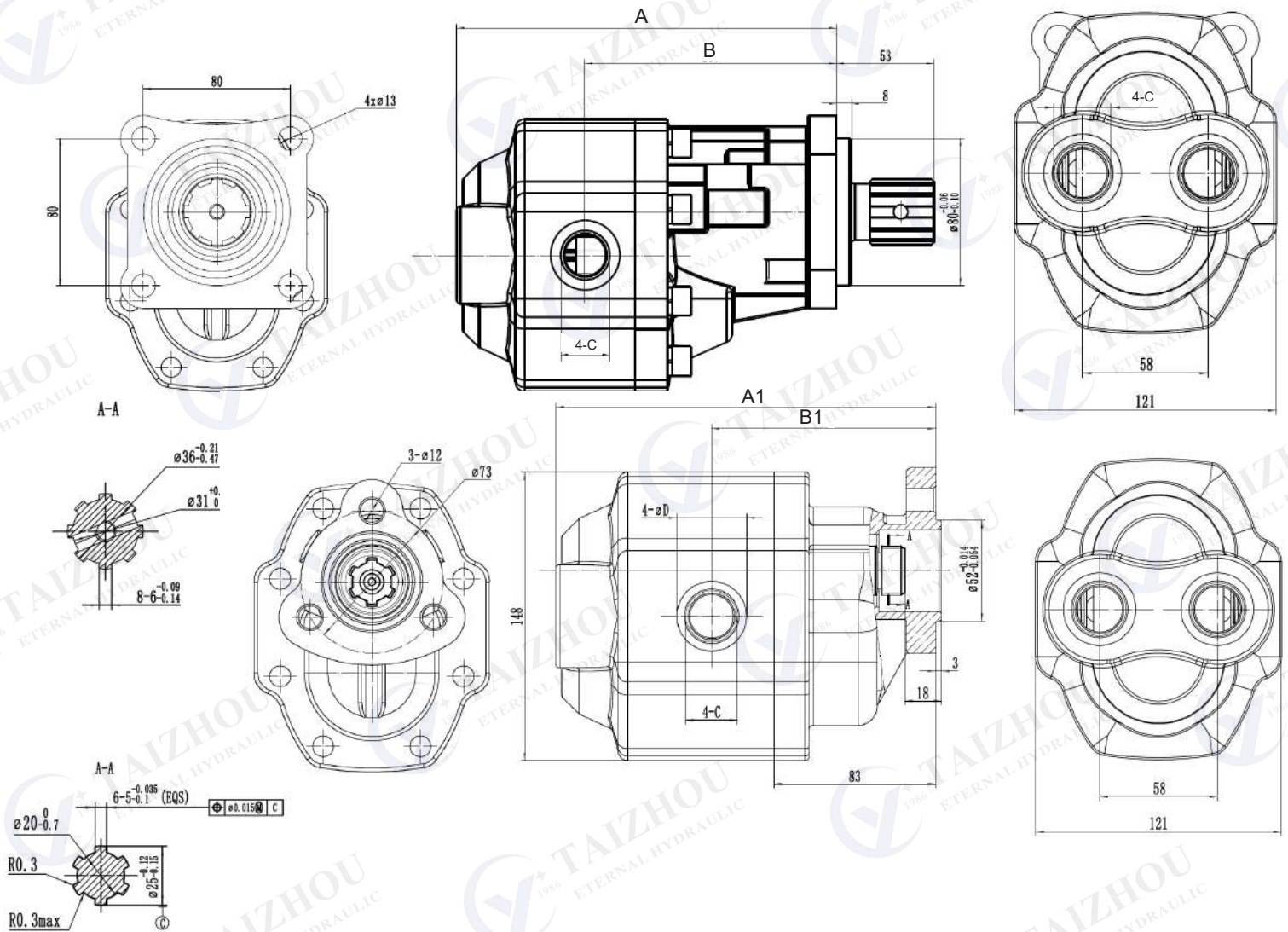


| Displacement (ml/r) | Maximum Pressure | | | Max. Cont. Speed (r/min) | Max. Inter. Speed (r/min) | Min. Speed (r/min) | L (mm) | L1 (mm) | Port C Inlet/ Outlet |
|------------------------|------------------|----------|----------|-----------------------------------|------------------------------------|--------------------------|-----------|------------|----------------------------|
| | P1 (bar) | P2 (bar) | P3 (bar) | | | | | | |
| 25 | 220 | 250 | 280 | 2000 | 2500 | 600 | 168.5 | 181.5 | G 3/4" |
| 32 | 220 | 250 | 280 | 2000 | 2500 | 600 | 173.5 | 186.5 | G 3/4" |
| 40 | 220 | 250 | 280 | 2000 | 2500 | 600 | 179.5 | 192.5 | G 3/4" |
| 50 | 220 | 250 | 280 | 2000 | 2500 | 600 | 185.5 | 198.5 | G 1" |
| 63 | 220 | 250 | 280 | 2000 | 2500 | 600 | 194.5 | 207.5 | G 1" |
| 75 | 220 | 250 | 280 | 2000 | 2500 | 600 | 203.5 | 216.5 | G 1" |

■ EHY35 Model Code

| Series | Front Cover | Displacement | Rotation | Port Position |
|--------------|----------------------------------|----------------|-------------------------------------|---|
| EHY35 | 3H: UNI 3 Bolt 4H: ISO 4 Bolt | 40, 50, 63, 82 | R: CW L: CCW W: Bidirectional | S2, SR2, SR21, R2, SR3, SR31, SR32, SR33, SR4 |

■ EHY35 Dimension

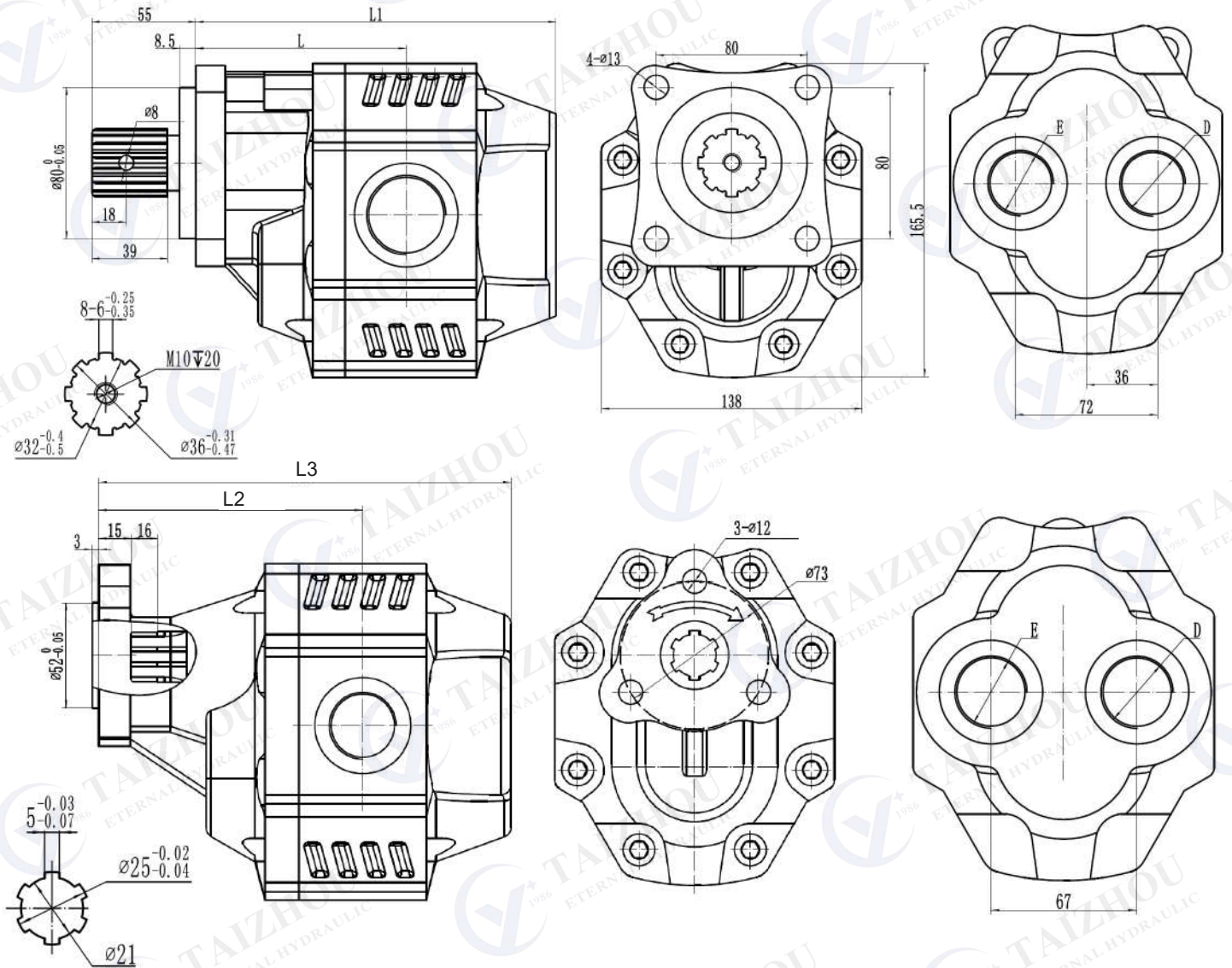


| Displacement (ml/r) | Maximum Pressure | | | Max. Cont. Speed (r/min) | Max. Inter. Speed (r/min) | Min. Speed (r/min) | A (mm) | B (mm) | A1 (mm) | B1 (mm) | D (mm) | Port C Inlet/Outlet |
|------------------------|------------------|----------|----------|-----------------------------|------------------------------|-----------------------|-----------|-----------|------------|------------|-----------|------------------------|
| | P1 (bar) | P2 (bar) | P3 (bar) | | | | | | | | | |
| 20 | 220 | 250 | 280 | 2000 | 2500 | 500 | 203 | 133.5 | 165 | 105 | 36 | G 3/4" |
| 32 | 220 | 250 | 280 | 2000 | 2500 | 500 | 210 | 136.5 | 173 | 113 | 36 | G 3/4" |
| 40 | 220 | 250 | 280 | 2000 | 2500 | 500 | 213 | 142.5 | 179 | 113 | 36 | G 3/4" |
| 50 | 220 | 250 | 280 | 2000 | 2500 | 500 | 217 | 142.5 | 186 | 115 | 42.5 | G 1" |
| 63 | 220 | 250 | 280 | 2000 | 2500 | 224 | 195 | 143.5 | 195 | 115 | 42.5 | G 1" |
| 82 | 220 | 250 | 280 | 1800 | 2000 | 231 | 202 | 147.7 | 202 | 115 | 42.5 | G 1" |

■ EHY40 Model Code

| Series | Front Cover | Displacement | Rotation | Port Position |
|--------------|----------------------------------|---------------------------------------|-------------------------------------|---|
| EHY40 | 3H: UNI 3 Bolt 4H: ISO 4 Bolt | 63, 75, 80, 90, 107, 115, 145, 160 | R: CW L: CCW W: Bidirectional | S2, SR2, SR21, R2, SR3, SR31, SR32, SR33, SR4 |

■ EHY40 Dimension

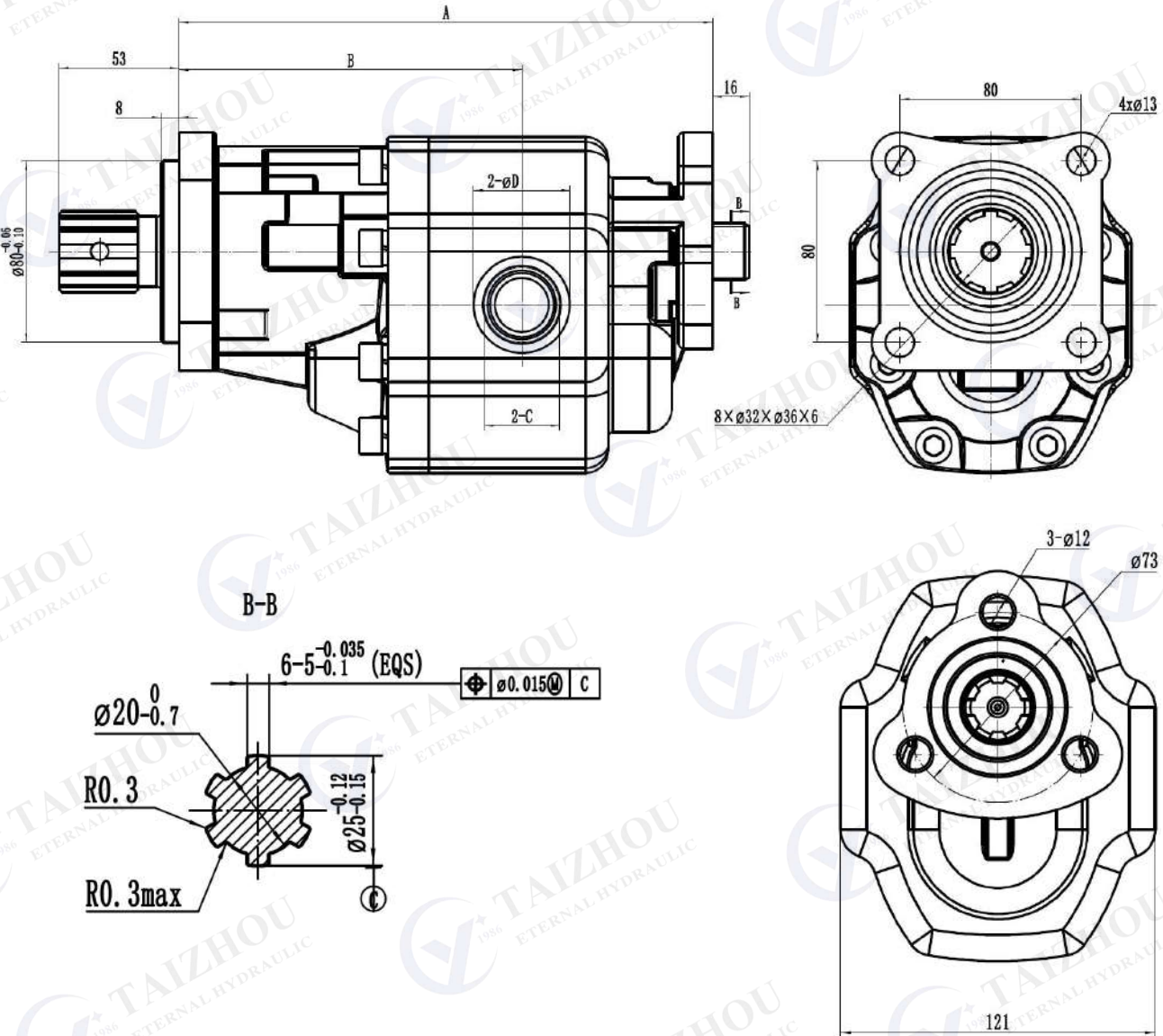


| Displacement (ml/r) | Maximum Pressure | | | L (mm) | L1 (mm) | L2 (mm) | L3 (mm) | Port D&E Inlet/ Outlet | Max. Inter. Speed (r/min) | Min. Speed (r/min) |
|------------------------|------------------|----------|----------|-----------|------------|------------|------------|---------------------------------|------------------------------------|--------------------------|
| | P1 (bar) | P2 (bar) | P3 (bar) | | | | | | | |
| 63 | 220 | 250 | 280 | 108.5 | 183.5 | 128.5 | 203.5 | G1 | 3000 | 600 |
| 75 | 220 | 250 | 280 | 111.5 | 186 | 131.5 | 206 | G1 1/4 | 3000 | 600 |
| 80 | 220 | 250 | 280 | 114 | 191 | 134 | 211 | G1 1/4 | 3000 | 600 |
| 90 | 220 | 250 | 280 | 116 | 196 | 136 | 216 | G1 1/4 | 3000 | 600 |
| 115 | 220 | 250 | 280 | 122.5 | 208 | 142.5 | 228 | G1 1/4 | 3000 | 600 |
| 145 | 220 | 250 | 280 | 131 | 224.5 | 151 | 244.5 | G1 1/4 | 3000 | 600 |
| 160 | 220 | 250 | 280 | 135 | 232.5 | 155 | 252.5 | G1 1/4 | 3000 | 600 |

■ EHYC40 Tandem Pump Model Code

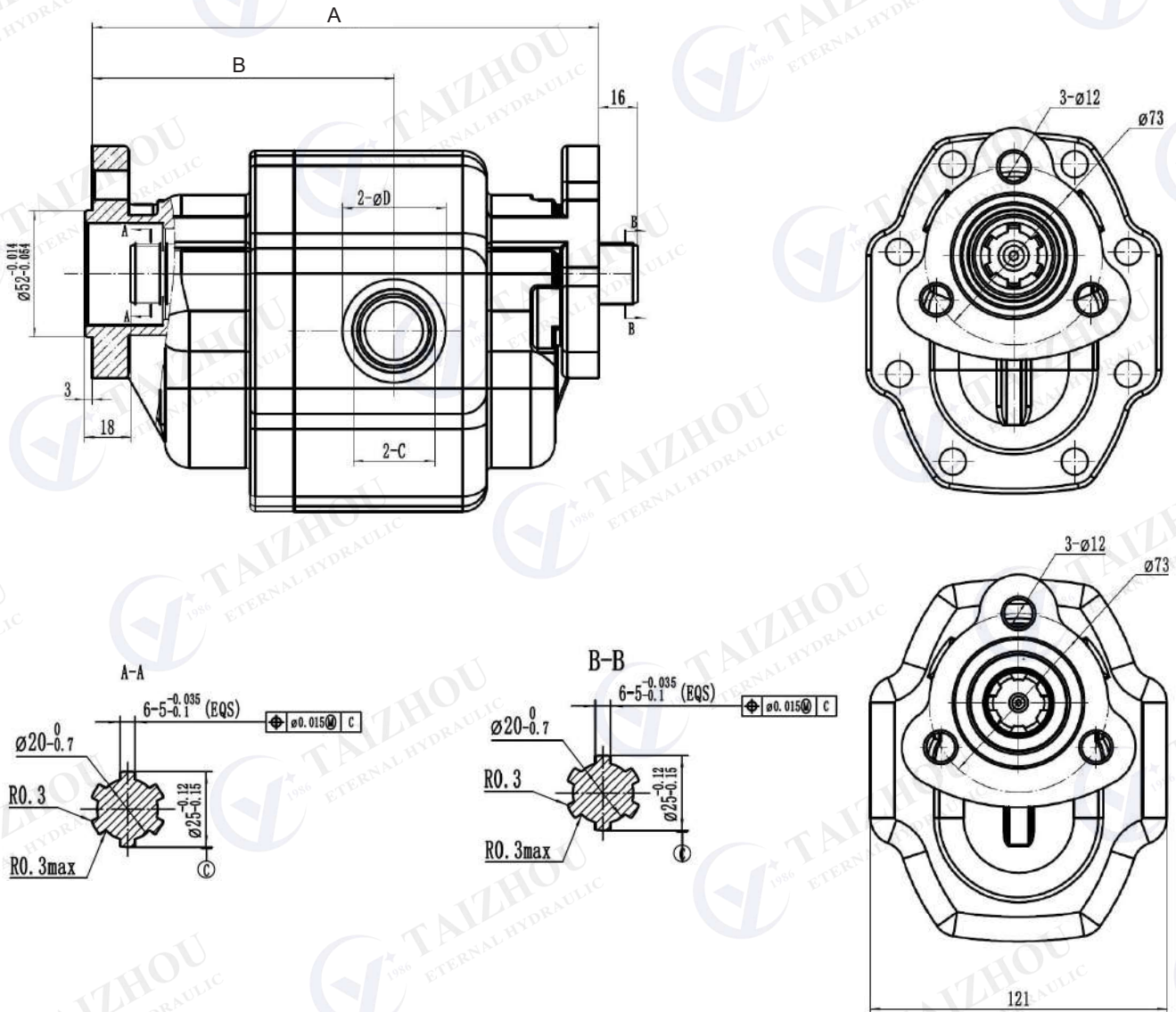
| Series | Front Cover | Displacement | Rotation | Shaft | Port Size |
|---------------|----------------------------------|----------------|-----------------|-------------------|-----------|
| EHYC40 | 3H: UNI 3 Bolt 4H: ISO 4 Bolt | 40, 50, 63, 82 | R: CW L: CCW | Omit: Standard | Omit: G |

■ EHYC40 Tandem Pump Dimension -4H



| Displacement | Maximum Pressure | Rated Pressure | Max. Cont. Speed | Max. Inter. Speed | Min. Speed | A | B | D | Port C |
|--------------|------------------|----------------|------------------|-------------------|------------|------|------|------|------------------|
| (ml/r) | (mpa) | (mpa) | (r/min) | (r/min) | (r/min) | (mm) | (mm) | (mm) | Inlet/ Outlet |
| 40 | 25 | 20 | 2000 | 2500 | 500 | 212 | 138 | 36 | G 3/4" |
| 50 | 25 | 20 | 2000 | 2500 | 500 | 219 | 142 | 42.5 | G 1" |
| 63 | 25 | 20 | 2000 | 2500 | 500 | 228 | 151 | 42.5 | G 1" |
| 82 | 25 | 20 | 2000 | 2500 | 500 | 235 | 151 | 42.5 | G 1" |

■ EHYC40 Tandem Pump Dimension - 3H



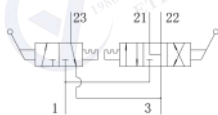
| Displacement | Maximum Pressure | Rated Pressure | Max. Cont. Speed | Max. Inter. Speed | Min. Speed | A | B | D | Port C |
|--------------|------------------|----------------|------------------|-------------------|------------|------|------|------|--------------|
| (ml/r) | (mpa) | (mpa) | (r/min) | (r/min) | (r/min) | (mm) | (mm) | (mm) | Inlet/Outlet |
| 40 | 25 | 20 | 2000 | 2500 | 500 | 185 | 111 | 36 | G 3/4" |
| 50 | 25 | 20 | 2000 | 2500 | 500 | 192 | 115 | 42.5 | G 1" |
| 63 | 25 | 20 | 2000 | 2500 | 500 | 201 | 124 | 42.5 | G 1" |
| 82 | 25 | 20 | 2000 | 2500 | 500 | 208 | 124 | 42.5 | G 1" |

BKQFA-D 比例控制气阀 Control valve

产品外形 Product appearance



液压符号 Hydraulic symbol



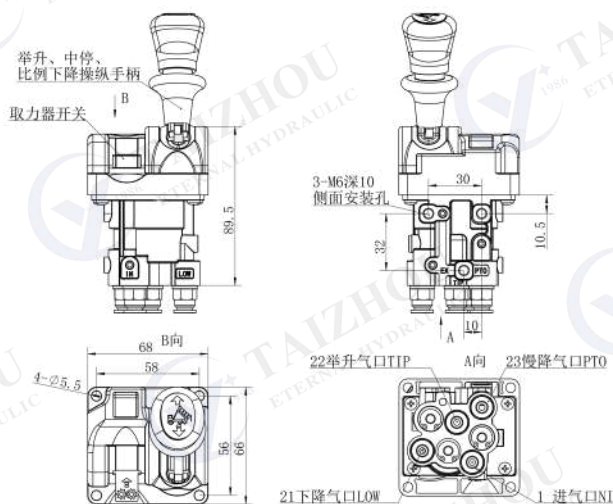
产品特性 Product features

- ◆ BKQFA-D 比例控制气阀该阀具有举升、中停、比例下降控制手柄和中停位置自锁功能。The valve has the functions of lifting, intermediate stop, proportional descending control handle and self-locking at intermediate stop position.
- ◆ 下降过程中气压任意调节，可以控制比例气控换向阀的回油量，实现比例下降功能。The air pressure can be adjusted arbitrarily during the descending process, which can control the oil return amount of the proportional air-controlled reversing valve to realize the proportional descending function.
- ◆ 该阀具有单独的取力器开关，可控制自卸车取力器开启、关闭。控制手柄推到下降位置取力器开关自动关闭。The valve has a separate power take-off switch, which can control the dump truck power take-off to open and close. When the control handle is pushed to the down position, the power take-off switch is automatically turned off.

技术参数 Technical parameter

1. 公称压力 (Nominal pressure): 1Mpa.
2. 通径 (Air channel diameter) : $\phi 4$ mm.
3. 控制气压 (Control air pressure): 0.6-1MPa.
4. 工作温度 (Operating temperature): -20 to +80°C .

外形尺寸 External dimensions

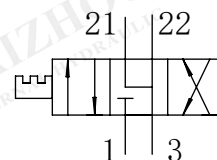


BKQFA-F 比例控制气阀 Control valve

产品外形 Product appearance



液压符号 Hydraulic symbol



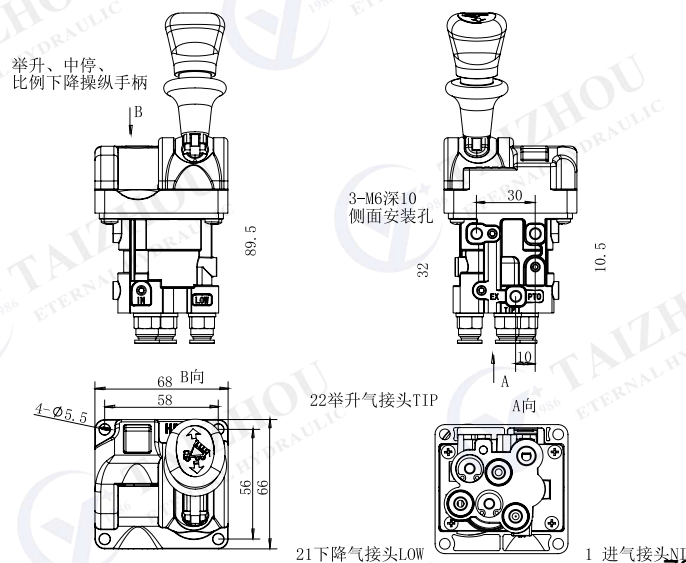
产品特性 Product features

- ◆ BKQFA-F 比例控制气阀该阀具有举升、中停、比例下降控制手柄和中停位置自锁功能。下降过程中气压任意调节。可以控制比例气控换向阀的回油量，实现比例下降功能。The valve has the functions of lifting, intermediate stop, proportional descending control handle and self-locking at the intermediate stop position. The air pressure can be adjusted arbitrarily during the descent. It can control the oil return amount of the proportional air-controlled reversing valve to realize the proportional drop function.

技术参数 Technical parameter

1. 公称压力 (Nominal pressure): 1Mpa.
2. 通径 (Air channel diameter) : $\phi 4$ mm.
3. 控制气压 (Control air pressure): 0.6-1MPa.
4. 工作温度 (Operating temperature): -20 to +80°C

外形尺寸 External dimensions

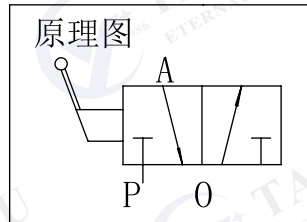


KQFA-A 控制气阀 Control valve

产品外形 Product appearance



液压符号 Hydraulic symbol



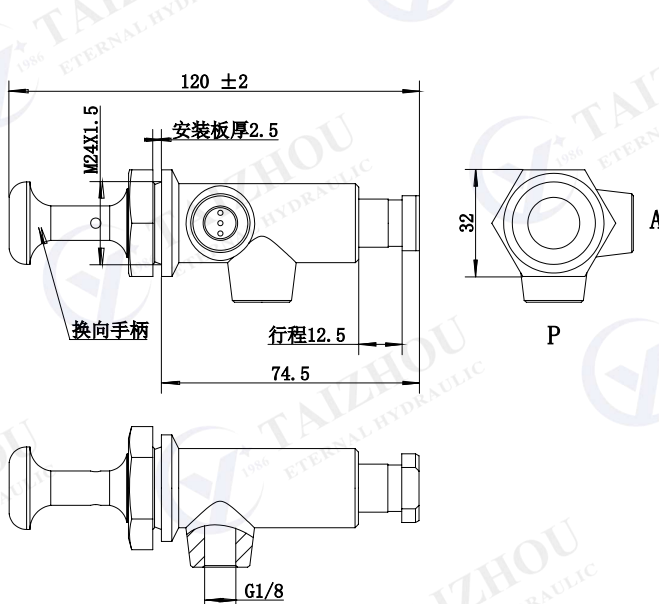
产品特性 Product features

- ◆ KQFA-A 控制气阀适用于安装在自卸汽车驾驶内，用于远程控制气控举升阀、气控分配阀实现油路切换功能。
The control valve KQFA-A is suitable for being installed in the dump truck driving, and is used to remotely control the air-controlled lift valve and the air-controlled distribution valve to realize the oil circuit switching function

技术参数 Technical parameter

1. 公称压力 (Nominal pressure) : 1Mpa.
2. 通径 (Air channel diameter): ϕ 4mm.
3. 行程 (Valve stroke): 12.5mm.
4. 工作温度 (Working temperature): -20 to +80°C .

外形尺寸 External dimensions

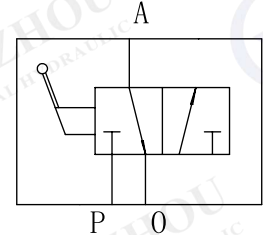


KQFD-A-00 拨钮控制气阀 Control valve

产品外形 Product appearance



液压符号 Hydraulic symbol



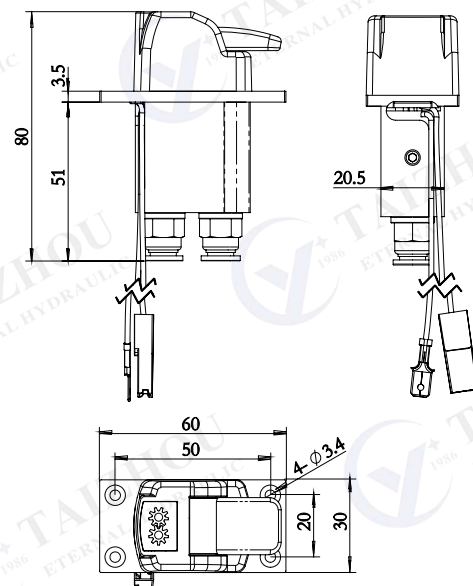
产品特性 Product features

- ◆ 具有嵌入式安装方式;
With embedded installation;
- ◆ 实现通气和关气功能;
Realize ventilation and closing functions;
- ◆ 最小装配空间和体积, 薄窄样式;
Minimal assembly space and volume, thin and narrow style;

技术参数 Technical parameter

1. 额定压力 (Rated pressure) : 1Mpa
2. 通径 (Air channel diameter) : 4mm
3. 控制气压 (Control air pressure): 0.6-1Mpa
4. 工作温度 (Operating temperature): -20 to +80°C
5. 工作介质 (Working medium): 空气 (air)

外形尺寸 External dimensions

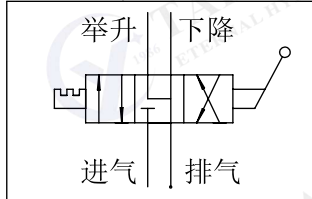


BKQFC-B 比例控制气阀 Control valve

产品外形 Product appearance



液压符号 Hydraulic symbol



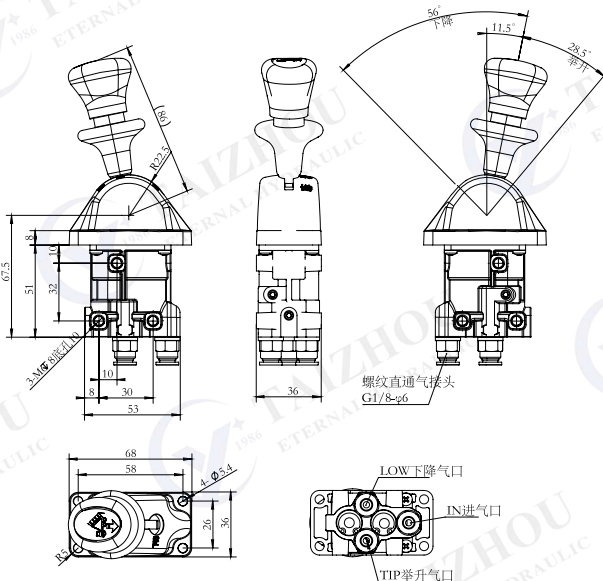
产品特性 Product features

- ◆ 适用于装配空间小或嵌入式美观设计的环境，以及空间较小自卸车驾驶室匹配安装。Suitable for small assembly space or embedded aesthetic design, And small space dump truck cab matching installation.
- ◆ 具有侧面和嵌入式安装方式；
With side and embedded installation;
- ◆ 实现举升、中停、比例慢降和下降功能；
Realize the functions of lifting, intermediate stop, proportional slow descent and descent;
- ◆ 最小装配空间和体积，薄窄样式；
Minimal assembly space and volume, thin and narrow style.

技术参数 Technical parameter

1. 额定压力 (Rated pressure): 1Mpa.
2. 通径 (Air channel diameter) : ϕ 4mm.
3. 控制气压 (Control air pressure): 0.6-1MPa.
4. 工作温度 (Operating temperature): -20 to $+80^{\circ}\text{C}$.
5. 工作介质 (Working medium): 空气 (air)

外形尺寸 External dimensions

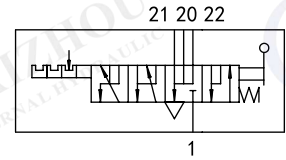


MKQFA-A 慢降控制气阀 Control valve

产品外形 Product appearance



液压符号 Hydraulic symbol



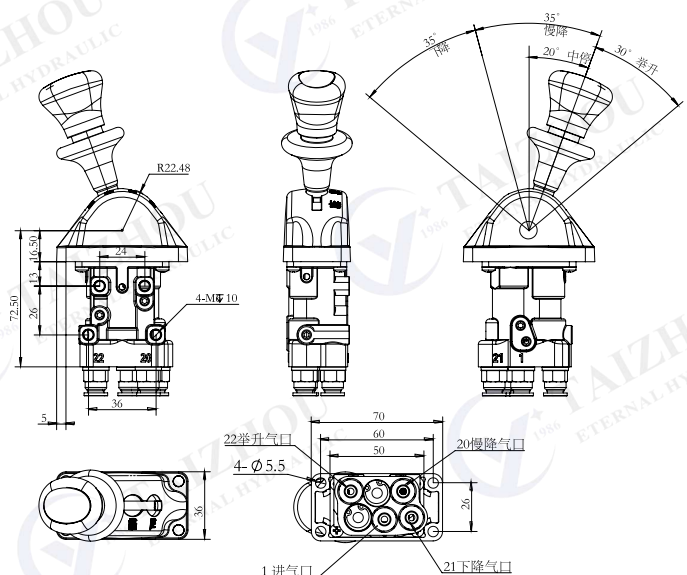
产品特性 Product features

- ◆ 适用于装配空间小或嵌入式美观设计的环境，以及空间较小自卸车驾驶室匹配安装。Suitable for small assembly space or embedded aesthetic design, And small space dump truck cab matching installation.
- ◆ 具有侧面和嵌入式安装方式；
With side and embedded installation;
- ◆ 实现举升、中停、慢降和下降功能；
Realize the functions of lifting, intermediate stop, slow descent and descent;
- ◆ 最小装配空间和体积，薄窄样式；
Minimal assembly space and volume, thin and narrow style.

技术参数 Technical parameter

1. 额定压力 (Rated pressure): 1Mpa.
2. 通径 (Air channel diameter) : ϕ 4mm.
3. 控制气压 (Control air pressure): 0.6-1MPa.
4. 工作温度 (Operating temperature): -20 to $+80^{\circ}\text{C}$.
5. 工作介质 (Working medium): 空气 (air)

外形尺寸 External dimensions

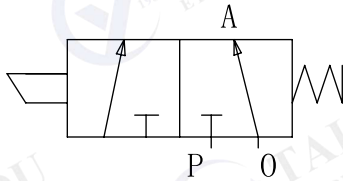


QXFF-A 气限位阀 limit valve

产品外形 Product appearance



液压符号 Hydraulic symbol



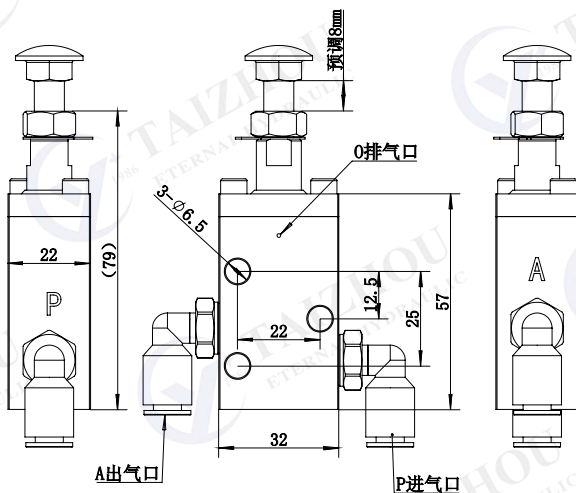
产品特性 Product features

- ◆ QXFF-A 常闭气限位阀该阀在常态下为进气口与出气口不通，限位杆压入阀体后，进气口与出气口通气
The normally closed limit valve is normally closed between the air inlet and the air outlet. After the limit rod is pressed into the valve body, the air inlet and the air outlet are ventilated.
- ◆ 常闭限位阀适用于自卸车带有后门锁紧装置，后门打开后，后门锁紧缸触碰到限位杆，出气口通气，压缩空气进入车厢的举升下降开关
The normally closed limit valve is suitable for the lift-down switch of the dump truck with the rear door locking device. After the rear door is opened, the rear door locking cylinder touches the limit rod, the air outlet is ventilated, and the compressed air enters the lift and lower switch of the cabin.

技术参数 Technical parameter

1. 可调范围 (Adjustable range) : 0-10mm.
2. 有效行程 (Effective itinerary) : 2.5-6mm.
3. 口径 (Air channel diameter) : $\phi 4$ mm.
4. 控制气压 (Control air pressure) : 0.6-1MPa.
5. 工作温度 (Operating temperature) : -20to+80°C.

外形尺寸 External dimensions

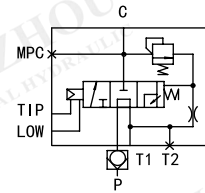


BHFA-Q20L 比例气控换向阀 Hydraulic valve

产品外形 Product appearance



液压符号 Hydraulic symbol



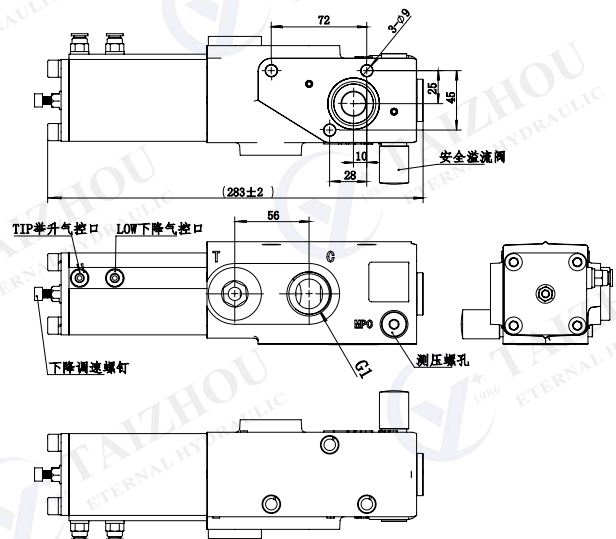
产品特性 Product features

- ◆ 适用于前顶多级缸的控制，可利用下置回油口 T 装配在油箱回油座上直接回油。也可选择侧置回油口 T1，采用管式回油。
It is suitable for the control of the front top multi-stage cylinder, and the lower oil return port T can be assembled on the valve seat of the oil tank to return the oil directly. The side oil return port T1 can also be selected, and the pipe type oil return is adopted.
- ◆ 远程气压控制车厢升、降和比例慢降功能。
Remote air pressure control truck up, down and proportional slow down function.
- ◆ 内设先导式溢流阀、进油单向阀，可设定系统压力。
It is equipped with a pilot-operated relief valve and an oil inlet check valve, which can set the system pressure.

技术参数 Technical parameter

1. 额定压力 (Rated pressure): 25Mpa.
2. 口径 (Oil channel diameter): 20mm.
3. 额定流量 (Rated flow): 220L/min.
4. 控制气压 (Control air pressure): 0.6-1Mpa.
5. 工作温度 (Working temperature): -20 to +80°C.

外形尺寸 External dimensions

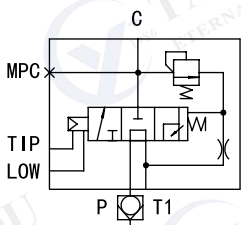


BHFB-Q20B-B 比例气控换向阀 Hydraulic valve

产品外形 Product appearance



液压符号 Hydraulic symbol



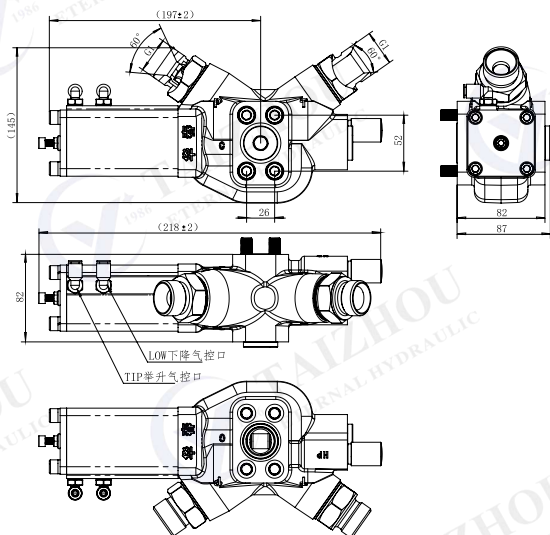
产品特性 Product features

- ◆ 利用双侧 C 出油口法兰, 装配在油缸进油口, 形成缸阀一体式(具防爆能力) 装配, 可根据油泵位置选择左、右双向安装方式。
Using the double-sided C oil outlet flange, it is assembled at the oil inlet of the oil cylinder to form an integrated cylinder valve (with explosion-proof capability) assembly. The left and right bidirectional installation methods can be selected according to the position of the oil pump.
- ◆ 具有控制车厢升、降和比例慢降功能。
It has the functions of controlling the lifting, lowering and proportional slow lowering of the dump truck.
- ◆ 内设先导式溢流阀, 可设定系统压力。
There is a pilot-operated relief valve inside, which can set the system pressure.

技术参数 Technical parameter

1. 额定压力 (Rated pressure): 25Mpa.
2. 通径 (Oil channel diameter): 20mm.
3. 额定流量 (Rated flow): 220L/min.
4. 控制气压 (Control air pressure): 0.6-1Mpa.
5. 工作温度 (Working temperature): -20 to +80°C.

外形尺寸 External dimensions

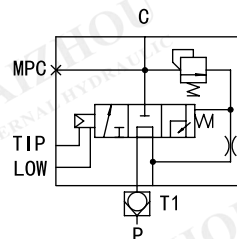


BHFC-Q20B-A 比例气控换向阀 Hydraulic valve

产品外形 Product appearance



液压符号 Hydraulic symbol



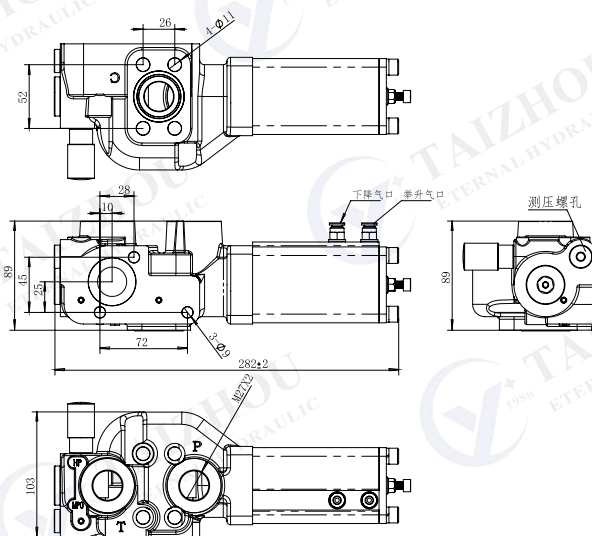
产品特性 Product features

- ◆ 适用于前顶多级缸的控制, 可利用下置回油口 T 装配在油箱回油。也可用 C 口法兰直接装配在油缸进油口。
It is suitable for the control of the front top multi-stage cylinder, and the lower oil return port T can be assembled on the valve seat of the oil tank to return the oil directly. It can also be directly assembled on the oil inlet of the cylinder with the C-port flange.
- ◆ 实现控制车厢升、降和比例慢降功能。
Realize the function of controlling the lift, lower and proportional slow down of the truck.
- ◆ 内设先导式溢流阀、进油单向阀, 可设定系统压力。It is equipped with a pilot-operated relief valve and an oil inlet check valve, which can set the system pressure.

技术参数 Technical parameter

1. 额定压力 (Rated pressure): 25Mpa.
2. 通径 (Oil channel diameter): 20mm.
3. 额定流量 (Rated flow): 220L/min.
4. 控制气压 (Control air pressure): 0.6-1Mpa.
5. 工作温度 (Working temperature): -20 to +80°C.

外形尺寸 External dimensions

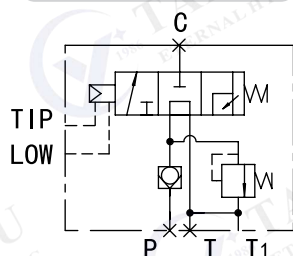


BHFA-Q25L-A 比例气控举升阀 Hydraulic valve

产品外形 Product appearance



液压符号 Hydraulic symbol



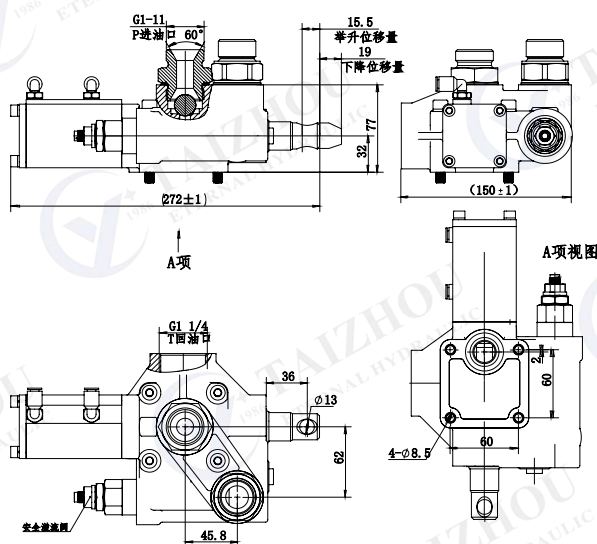
产品特性 Product features

- ◆ 适用于前顶多级缸的控制，可利用下置回油口 T 装配在油箱阀座直接回油。也可选择侧置回油口 T1，采用管式回油。
It is suitable for the control of the front top multi-stage cylinder, and the lower oil return port T can be assembled on the valve seat of the oil tank to return the oil directly. The side oil return port T1 can also be selected, and the pipe type oil return is adopted.
- ◆ 远程气压控制车厢升、降和比例慢降功能。
Remote air pressure control truck lift, lower and proportional slow down function.
- ◆ 内设先导式溢流阀、进油单向阀，可设定系统压力。
It is equipped with a pilot-operated relief valve and an oil inlet check valve, which can set the system pressure.

技术参数 Technical parameter

1. 额定压力 (Rated pressure): 25Mpa.
2. 通径 (Oil channel diameter): 25mm.
3. 额定流量 (Rated flow): 220L/min.
4. 控制气压 (Control air pressure): 0.6-1Mpa.
5. 工作温度 (Working temperature): -20 to +80°C.

外形尺寸 External dimensions

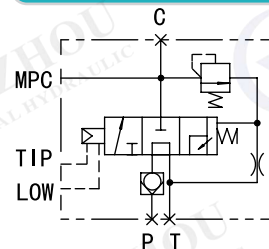


BHFA-Q32B-A 比例气控换向阀 Hydraulic valve

产品外形 Product appearance



液压符号 Hydraulic symbol



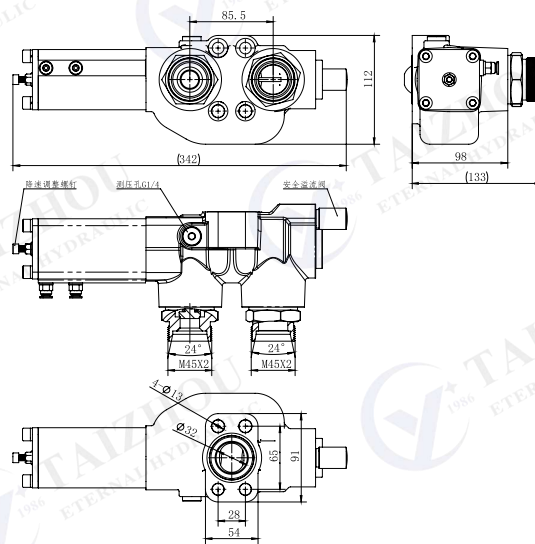
产品特性 Product features

- ◆ 适用大流量矿用车辆液压系统，利用双侧 C 出油口法兰，装配在油缸进油口，形成缸阀一体式（具防爆能力）装配。
It is suitable for the hydraulic system of large-flow mining vehicles. It uses the double-sided C oil outlet flange to be assembled at the oil inlet of the oil cylinder to form an integrated cylinder valve (with explosion-proof capability) assembly.
- ◆ 具有控制车厢升、降和比例慢降功能。
It has the function of controlling the lift, drop and proportional slow drop of the truck.
- ◆ 内设先导式溢流阀，可设定系统压力。
There is a pilot-operated relief valve inside, which can set the system pressure.

技术参数 Technical parameter

1. 额定压力 (Rated pressure): 25Mpa.
2. 通径 (Oil channel diameter): 32mm.
3. 额定流量 (Rated flow): 320L/min.
4. 控制气压 (Control air pressure): 0.6-1Mpa.
5. 工作温度 (Working temperature): -20 to +80°C.

外形尺寸 External dimensions

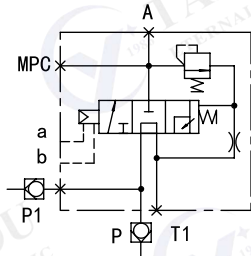


BHFA-Q32L-A 比例气控分配阀 Hydraulic valve

产品外形 Product appearance



液压符号 Hydraulic symbol



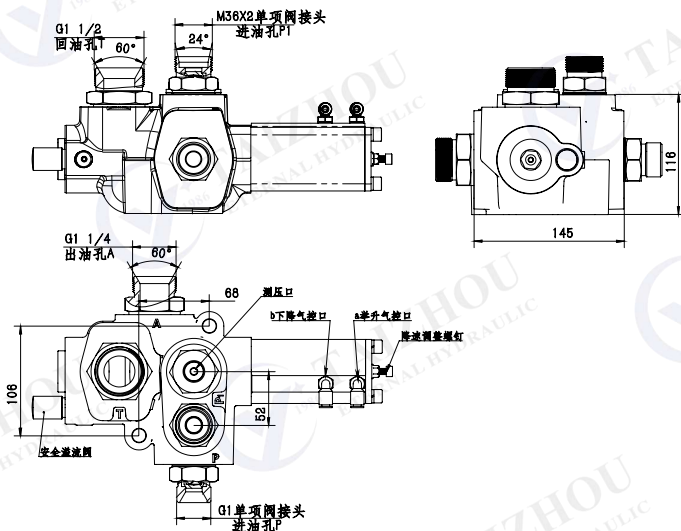
产品特性 Product features

- ◆ 适用举升油泵和转向油泵合流矿用卡车液压系统，双进口口设有单向阀，通径大。
It is suitable for the hydraulic system of mining trucks where the lift oil pump and the steering oil pump are combined.
- ◆ 具有控制车厢升、降和比例慢降功能。
It has the function of controlling the lift, drop and proportional slow drop of the truck.
- ◆ 内设先导式溢流阀，可设定系统压力。
There is a pilot-operated relief valve inside, which can set the system pressure.

技术参数 Technical parameter

1. 额定压力 (Rated pressure): 25Mpa.
2. 通径 (Oil channel diameter): 32mm.
3. 额定流量 (Rated flow): 320L/min.
4. 控制气压 (Control air pressure): 0.6-1Mpa.
5. 工作温度 (Working temperature): -20 to +80°C.

外形尺寸 External dimensions

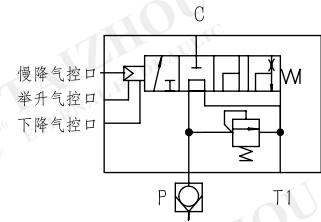


HXFC-Q15L-A 慢降气控换向阀 Hydraulic valve

产品外形 Product appearance



液压符号 Hydraulic symbol



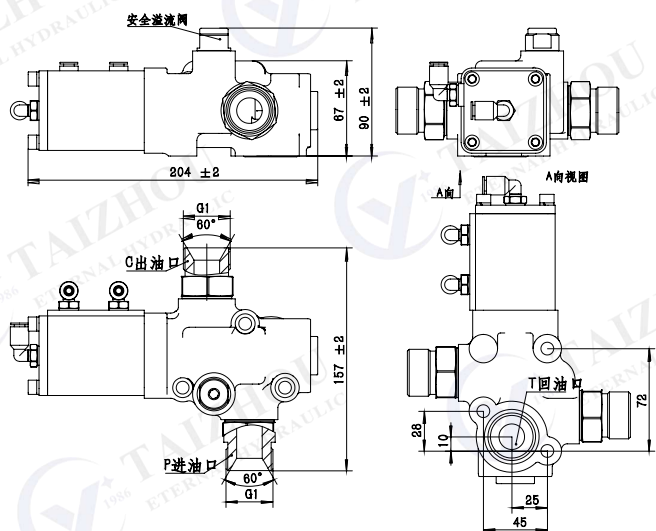
产品特性 Product features

- ◆ 适用于农用轻卡前顶自卸车液压系统，可用下置回油口 T 装配在油箱阀座直接回油。
It is suitable for the hydraulic system of agricultural light truck front top dump trucks. Use the lower oil return port T to install on the valve seat of the oil tank to return the oil directly.
- ◆ 内设安全溢流阀、可设定系统压力。
Built-in safety relief valve, can set the system pressure.
- ◆ 可采用控制气阀，远程气控换向控制。
Control air valve and remote air control reversing control can be used

技术参数 Technical parameter

1. 额定压力 (Rated pressure): 9-16Mpa.
2. 通径 (Oil channel diameter): 15mm
3. 额定流量 (Rated flow): 60L/min
4. 控制气压 (Control air pressure): 0.6-1Mpa.
5. 工作温度 (Working temperature): -20 to +80°C.

外形尺寸 External dimensions

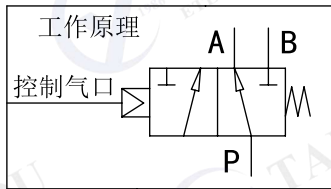


HXFE-Q25L-A 气控换向阀 Y 型 Hydraulic valve

产品外形 Product appearance



液压符号 Hydraulic symbol



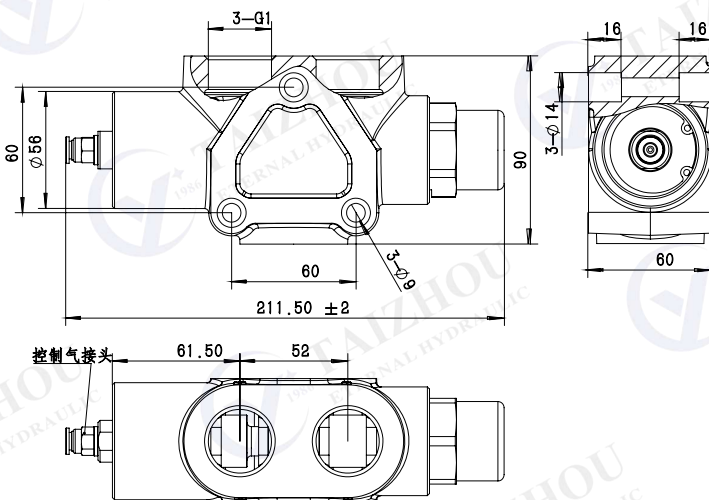
产品特性 Product features

- ◆ 适用于双油路切换控制，控制气缸未通气状态，油口 P 与油口 A 双向常通，控制气缸通气后，油口 P 与油口 B 双向常通，与油口 A 关闭。
It is suitable for dual oil circuit switching control. It controls the non-vented state of the cylinder, and the oil port P and the oil port A are normally connected in both directions. After the control cylinder is ventilated, the oil port P and the oil port B are normally connected in both directions, and the oil port A is closed.
- ◆ 可正反双侧装配，通径大体积小、内泄小。
- ◆ It can be assembled on both sides, with large diameter and small volume, and small internal leakage.

技术参数 Technical parameter

1. 最高承压力 (Maximum bearing pressure): 35Mpa.
2. 通径 (Oil channel diameter): 25mm.
3. 额定流量 (Rated flow): 250L/min.
4. 控制气压 (Control air pressure): 0.6-1Mpa.
5. 工作温度 (Working temperature): -20 to +80°C.

外形尺寸 External dimensions

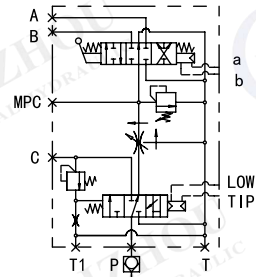


ZDLA-Q20L-A 整体分流组合阀 Hydraulic valve

产品外形 Product appearance



液压符号 Hydraulic symbol



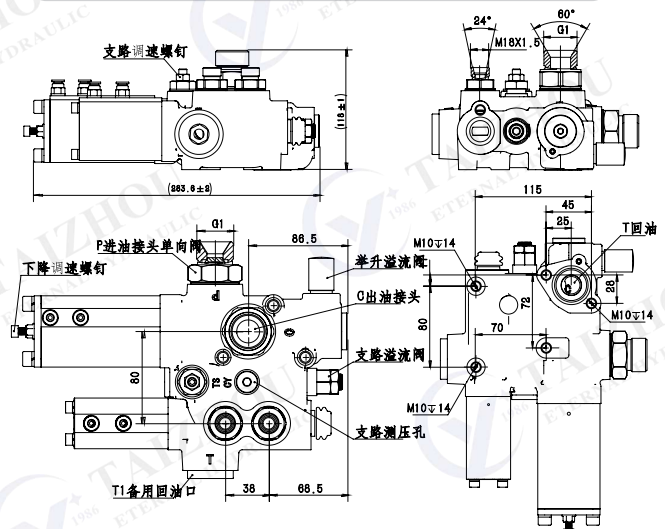
产品特性 Product features

- ◆ 适用于单泵多油缸渣土车液压系统，具有控制车厢升降和顶盖启闭功能；
It is suitable for the hydraulic system of the single-pump and multi-cylinder muck truck, and has the functions of controlling the lift of the carriage and the opening and closing of the top cover;
- ◆ 具有油箱阀座和分体式装配方式；
With tank valve seat and split assembly;
- ◆ 可分别设定车厢和顶盖压力；
The pressure of the compartment and the roof can be set separately;
- ◆ 实现动态稳流和流量设定；
Realize dynamic steady flow and flow setting

技术参数 Technical parameter

1. 最大流量 (Maximum flow): 220L/min;
2. 主换向阀最大压力 (Main reversing valve maximum pressure): 25Mpa;
3. 支路换向阀额定压力 (Branch reversing valve rated pressure): 16Mpa;
4. 支路调节流量 (Branch regulating flow): 20-40L/min;
5. 控制气压 (control air pressure): 0.6-1Mpa;

外形尺寸 External dimensions



Related Products



EG Gear Pump



Piston Pump



PTOs



Hydraulic Orbit Motor



Hydraulic Cylinder



Directional Control Valve

台州永畅液压机械有限公司

Taizhou Eternal Hydraulic Machine Co., Ltd.

Add: No.11 Xiquan Road, Anzhou Street, Xianju County,
Taizhou City, Zhejiang, China
Contact person: Mr Leo Wu
Mobile: +86-13656579545 (Wechat/Whatsapp)
Skype: leowu1986

Tel: +86-576-89370768 Fax: +86-89370769
Email: leo@xjetl.com
Web: www.etlhyd.com www.xjetl.com
www.facebook.com/etlhydraulic
https://taizhouyongchang.en.alibaba.com

