

产品特点/ Product Feature

CA液压马达是我司针对高端市场所开发的新产品，此产品能在各种恶劣工况下稳定工作，能满足大多数场合下对液压马达的高工作压力、大扭矩输出及低速稳定性等要求，在结构上，这款马达采用端面配流，径向柱塞内曲线形式，利用马达转子中空优势，能方便的根据用户要求配置制动器、测速器，及通过马达中孔的特殊设备，大大简化用户对主机结构的要求。

其主要特点如下：

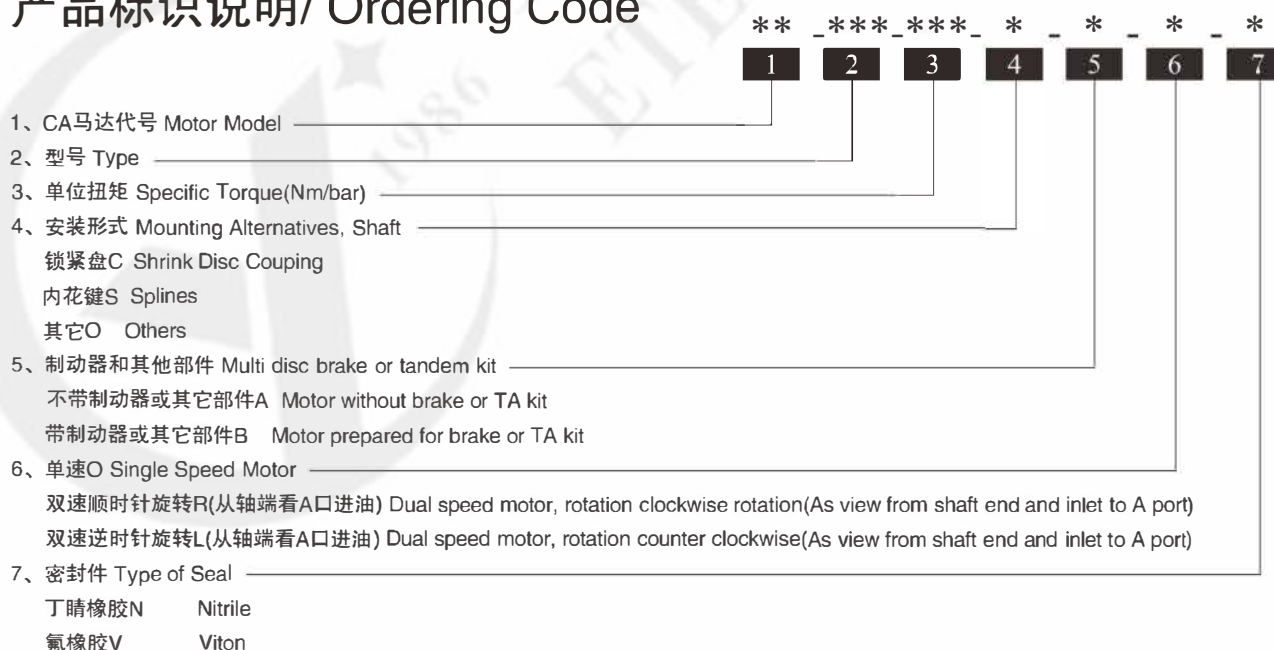
- 抗冲击能力强，稳定性好；
- 可实现安全平稳的变量及停车制动；
- 能实现自由轮工况；
- 多种安装方式及中空轴设计；
- 大输出扭矩、宽转速范围，可直接替代高速马达加减速机装置，结构紧凑（体积小）；
- 具有良好的低速稳定性，能在很低的转速下平稳运转；
- 具有较高的机械率和容积效率；
- 旋转方向可逆；
- 功率质量比高；
- 可靠性好，维修方便。

CA series' cam-ring piston hydraulic motor is what we design for high-end application. With advantage of hollow rotor, CA motor can be mounted with brake, speed encoder, and some special equipments mounted through the center of motor, according to the user's requirements. It shows its striking features of high pressure endurance, stability at low speed, and high output torque in various inferior working conditions.

Main characteristics:

- Strong anti-shock capability and stability;
- Stable variable switch and parking brake;
- Enable free running working condition;
- Multi-mounting options; hollow shaft design;
- Large output torque; wide speed range; directly replace combined devices of high speed moto and gearbox; compact structure;
- Stable performance at low speed;
- Higher mechanical and volumetric efficiency;
- Reversible rotation;
- High power-mass ratio;
- High reliability; easy maintenance.

产品标识说明/ Ordering Code

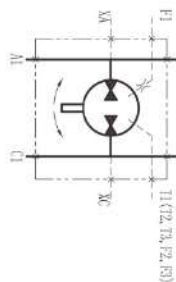


技术参数/ Technical Specification

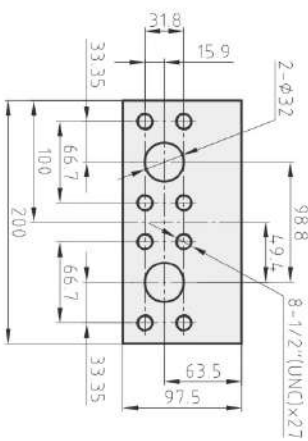
马达型号 TYPE	排量 Displacement	单位扭矩 Unit Torque	额定压力 Rated Pressure	最大压力 Max. Pressure	额定扭矩 Rated Torque	额定转速 Rated Speed	最大转速 Max. Speed	重量(花键) Weight (Spline)	重量(锁紧盘) Weight (Shrink Disc Coupling)
	ml/r	N.m/bar	bar	bar	N.m	r/min	r/min	Kg	Kg
CA50-20	1,256	20	250	315	5,000	340	340	175	203
CA50-25	1,570	25	250	315	6,250	298	340		
CA50-32	2,010	32	250	315	8,000	238	340		
CA50-40	2,512	40	250	315	10,000	196	298		
CA50-50	3,140	50	250	315	12,500	170	238		
CA70-40	2,512	40	250	315	10,000	230	340	205	232
CA70-50	3,140	50	250	315	12,500	191	272		
CA70-60	3,771	60	250	315	15,000	166	234		
CA70-70	4,400	70	250	315	17,500	153	204		
CA100-40	2,512	40	250	315	10,000	332	340	265	310
CA100-50	3,140	50	250	315	12,500	272	340		
CA100-64	4,020	64	250	315	16,000	221	332		
CA100-80	5,024	80	250	315	20,000	187	264		
CA100-100	6,280	100	250	315	25,000	162	230		
CA140-80	5,024	80	250	315	20,000	208	289	305	347
CA140-100	6,280	100	250	315	25,000	174	234		
CA140-120	7,543	120	250	315	30,000	153	208		
CA140-140	8,800	140	250	315	35,000	145	187		
CA210-160	10,051	160	250	315	40,000	89	128	395	456
CA210-180	11,314	180	250	315	45,000	85	115		
CA210-210	13,200	210	250	315	52,500	72	98		



CA50外形及安装尺寸/ CA50 Installation Dimensions



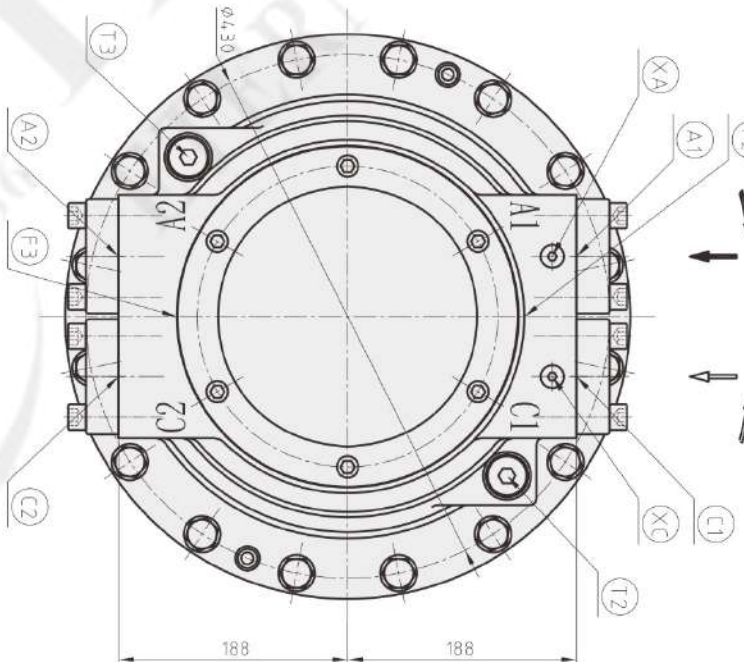
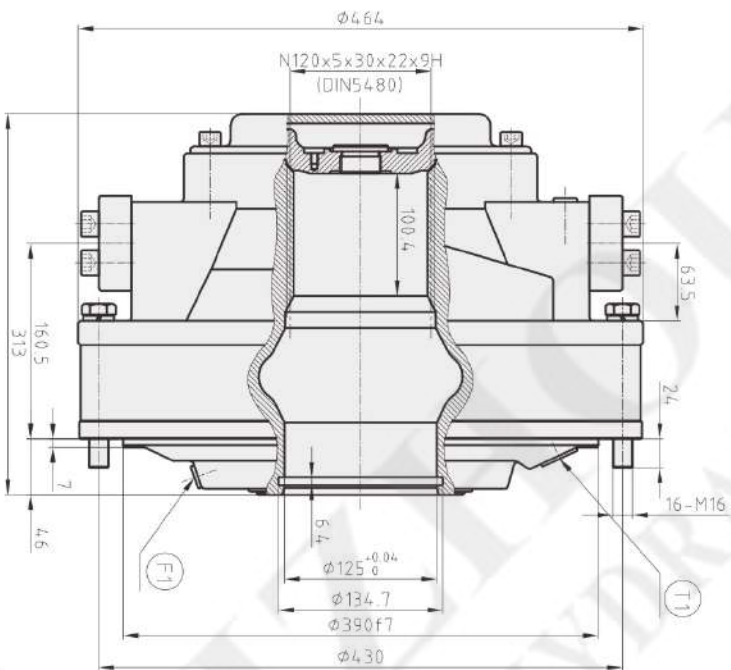
液压原理图/Hydraulic Schematic



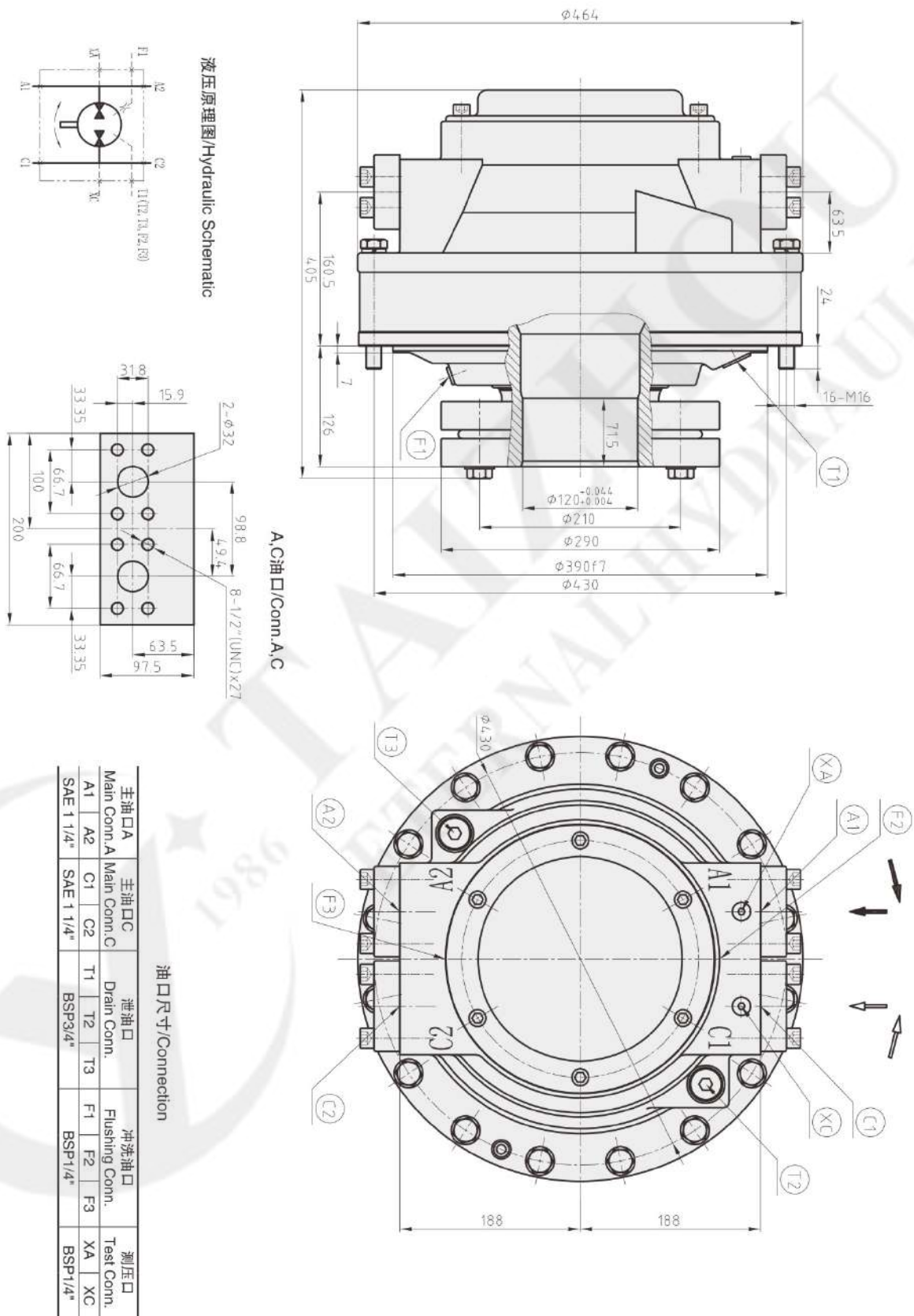
A.C油口/Conn.A,C

油口尺寸/Connection

主油口A Main Conn.A	主油口C Main Conn.C	泄油口 Drain Conn.	冲洗油口 Flushing Conn.	测压口 Test Conn.
A1	C1	T1	F1	XA
A2	C2	T2	F2	XC
SAE 1 1/4"		BSP3/4"		BSP1/4"

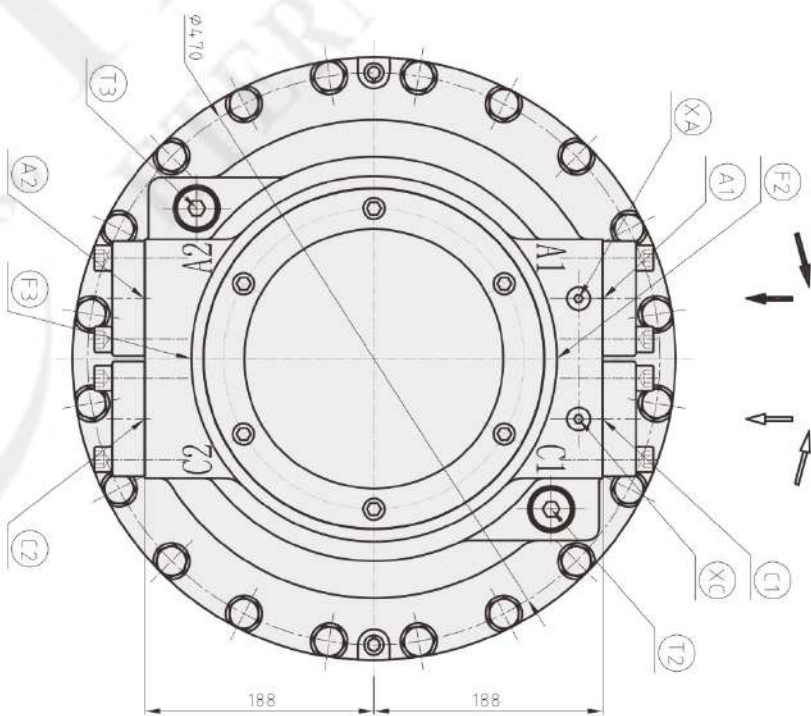
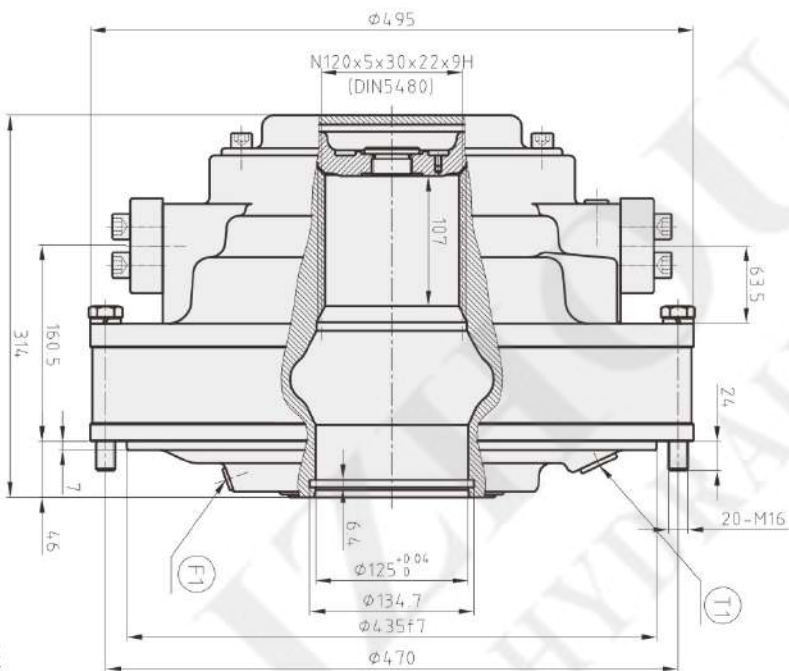
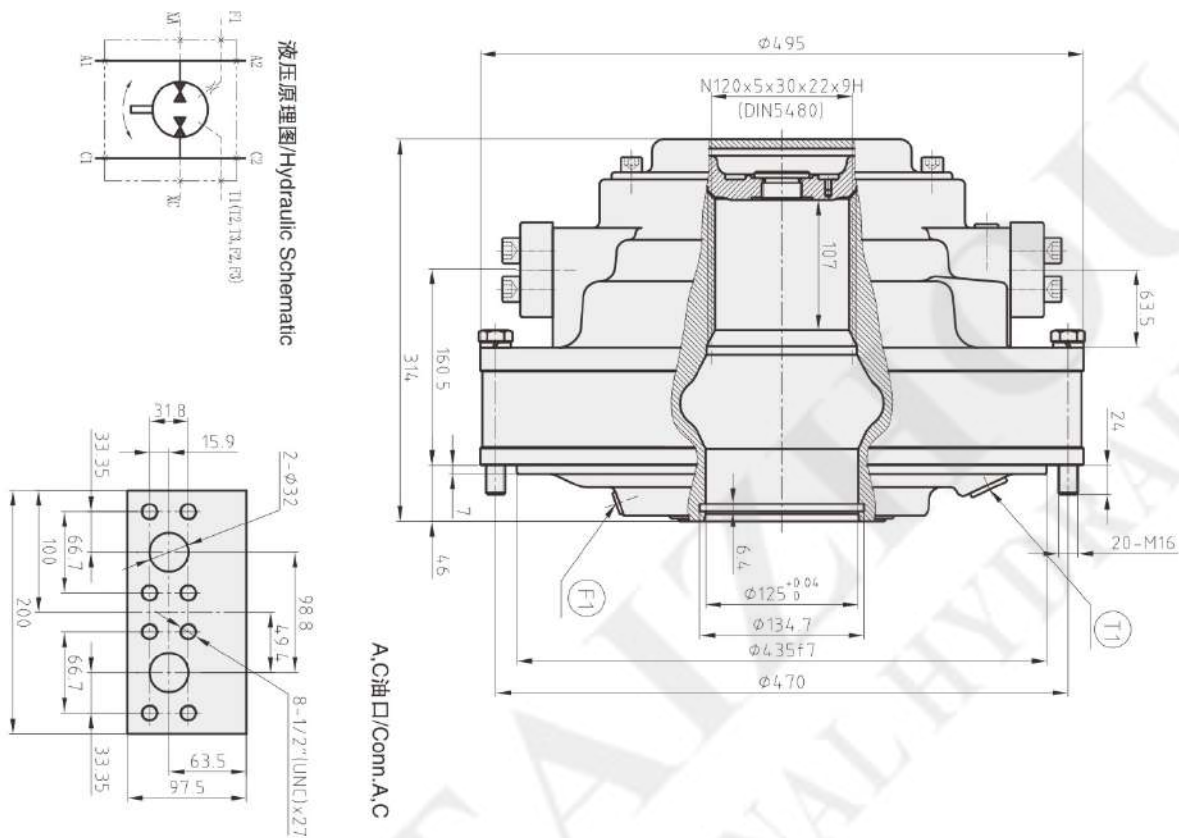


CA50外形及安装尺寸/ CA50 Installation Dimensions



- BM
- ZM
- ZGM
- ST1C
- CA
- QJM
- ZYC
- ZP300
- ZYH
- PB
- ZYJ
- ZBJ
- IKY
- GFT

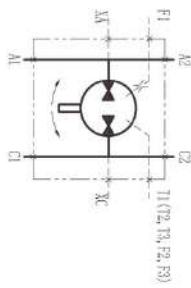
CA70外形及安装尺寸/ CA70 Installation Dimensions



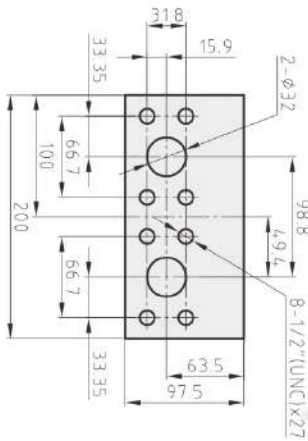
主油口A Main Conn. A	主油口C Main Conn. C	泄油口 Drain Conn.	冲洗油口 Flushing Conn.	测压口 Test Conn.
A1	C1	T1	F1	XA
A2	C2	T2	F2	XC
SAE 1 1/4"	SAE 1 1/4"	BSP3/4"	BSP1/4"	BSP1/4"

油口尺寸/Connection

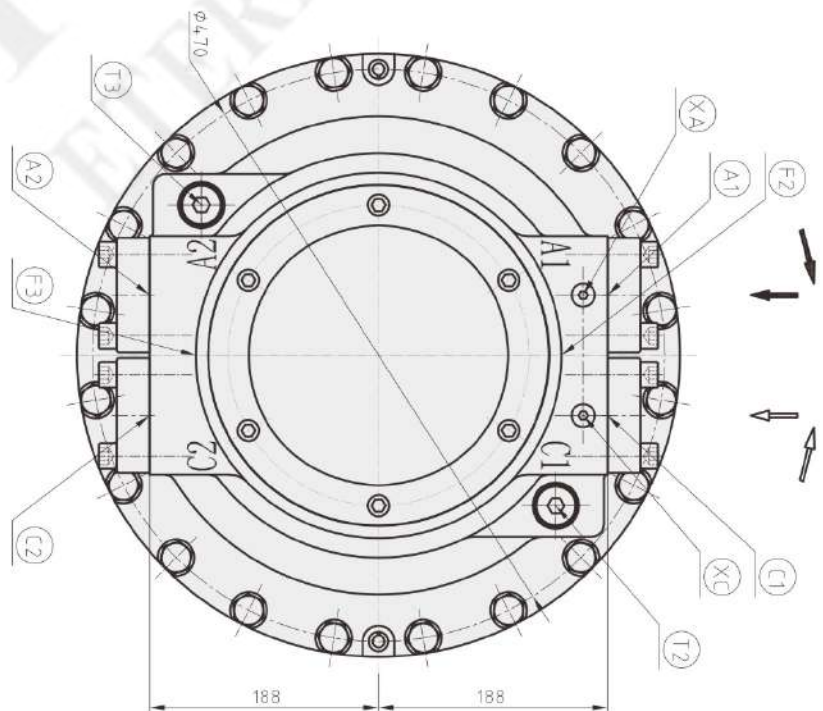
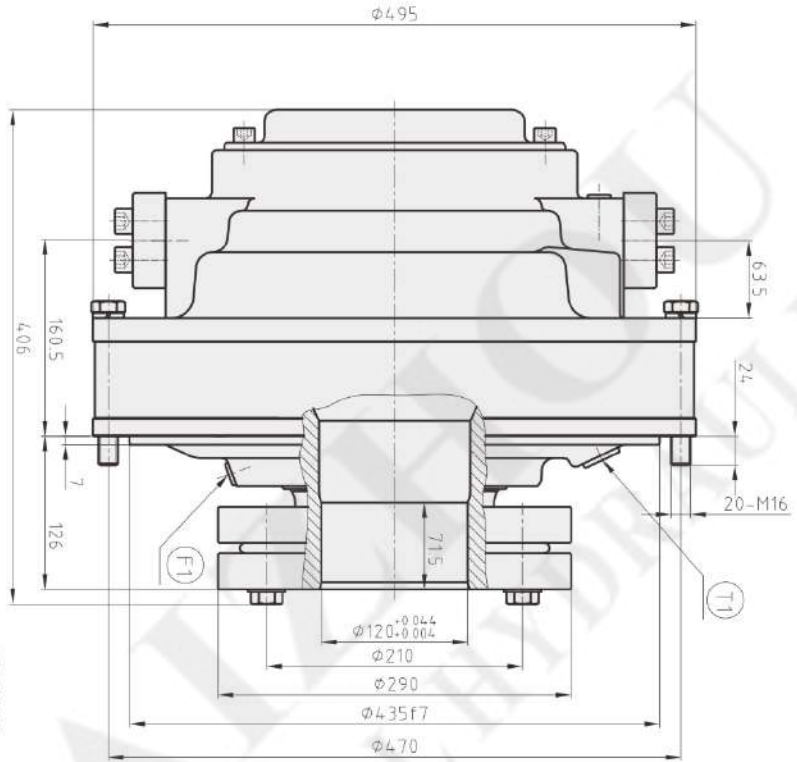
CA70外形及安装尺寸/ CA70 Installation Dimensions



液压原理图/Hydraulic Schematic



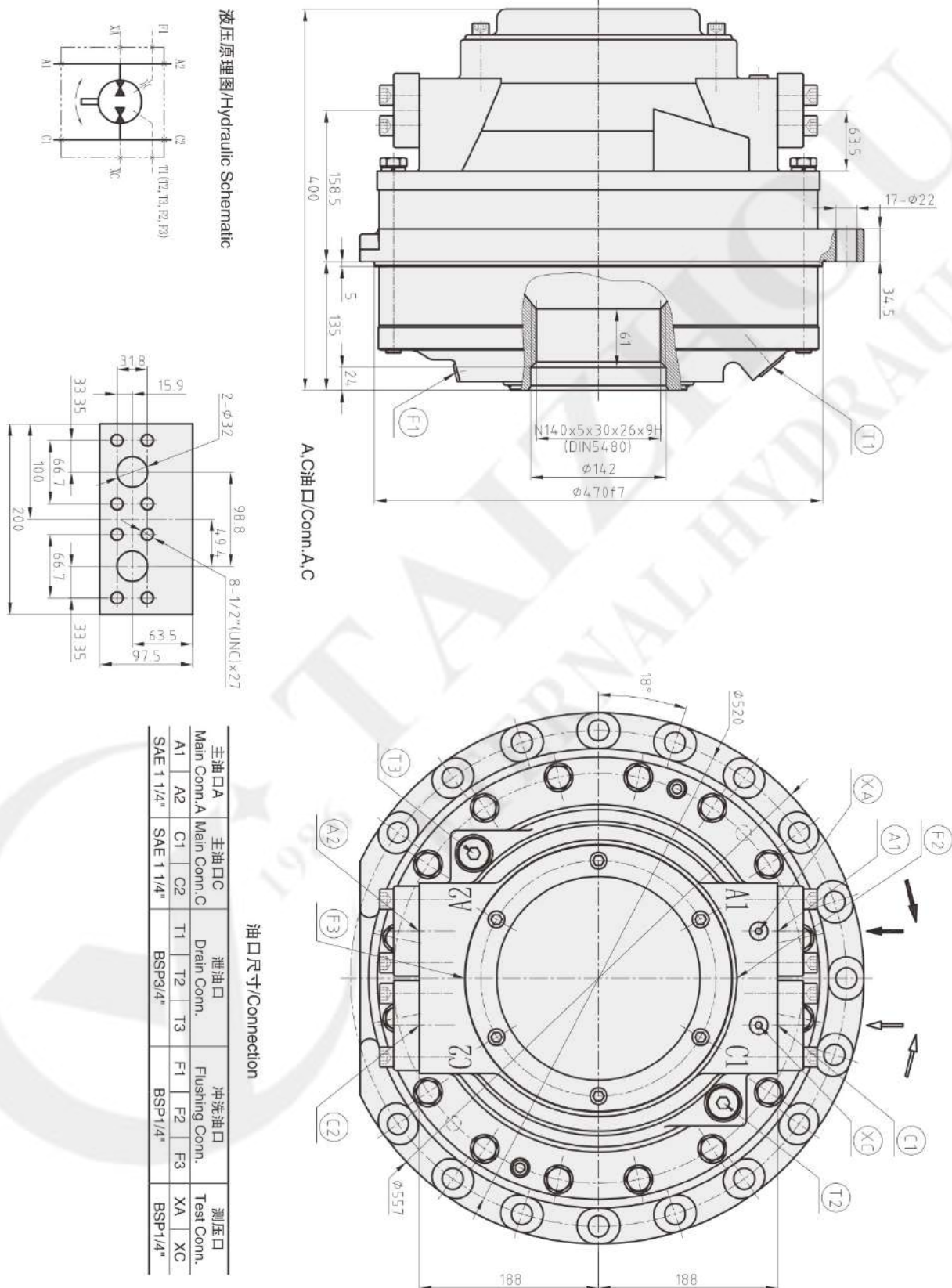
A,C油口/Conn.A,C



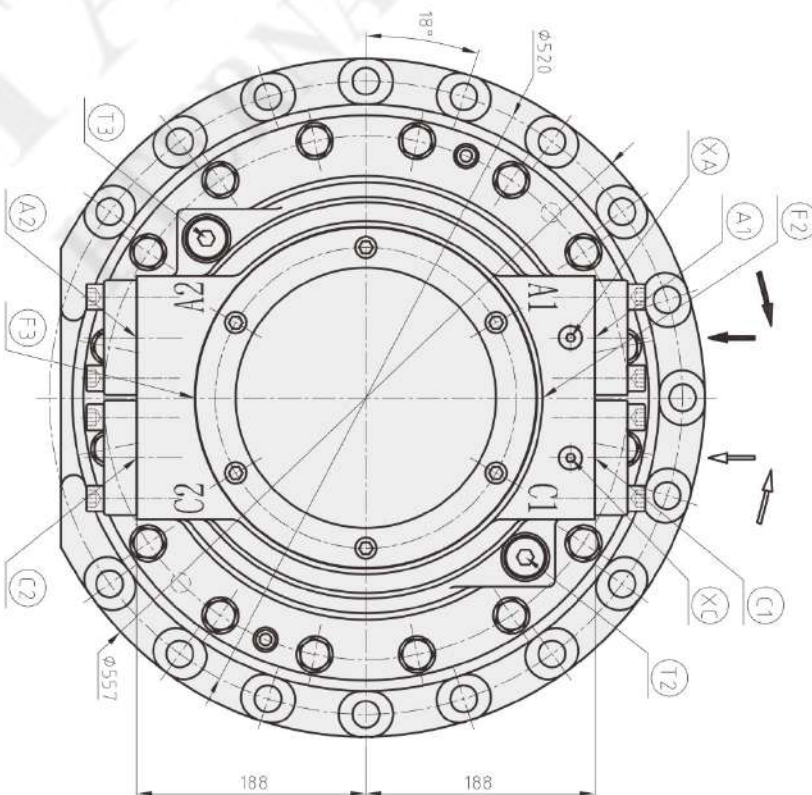
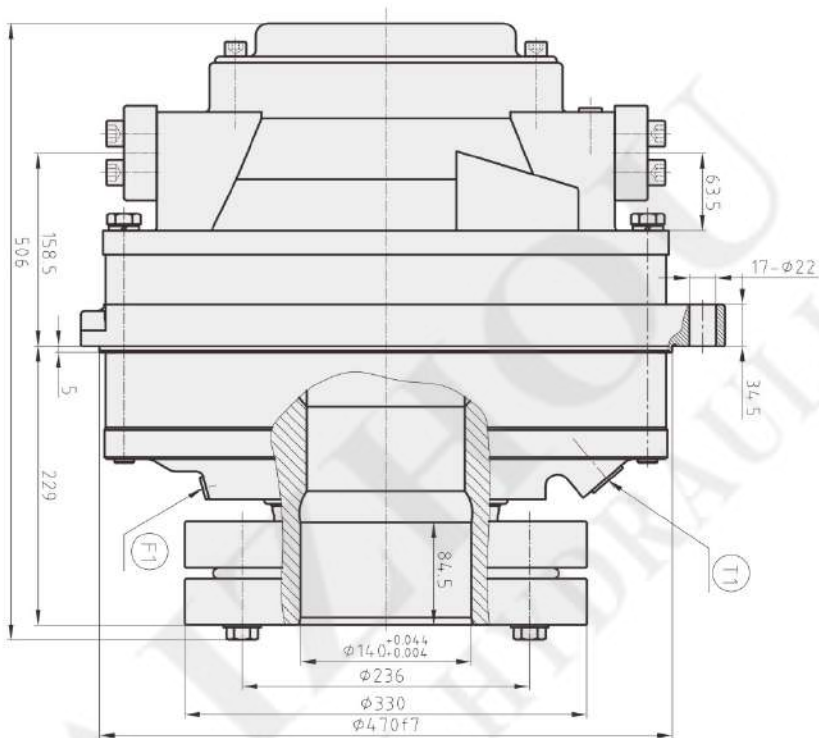
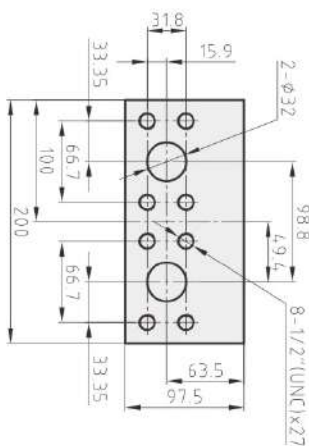
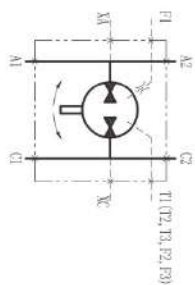
油口尺寸/Connection

主油口A Main Conn. A	主油口C Main Conn. C	泄油口 Drain Conn.	冲洗油口 Flushing Conn.	测压口 Test Conn.
A1	C1	T1	F1	XA
A2	C2	T2	F2	XC
SAE 1/4"	SAE 1/4"	BSP3/4"	BSP1/4"	BSP1/4"

CA100外形及安装尺寸/ CA100 Installation Dimensions



CA100外形及安装尺寸/ CA100 Installation Dimensions



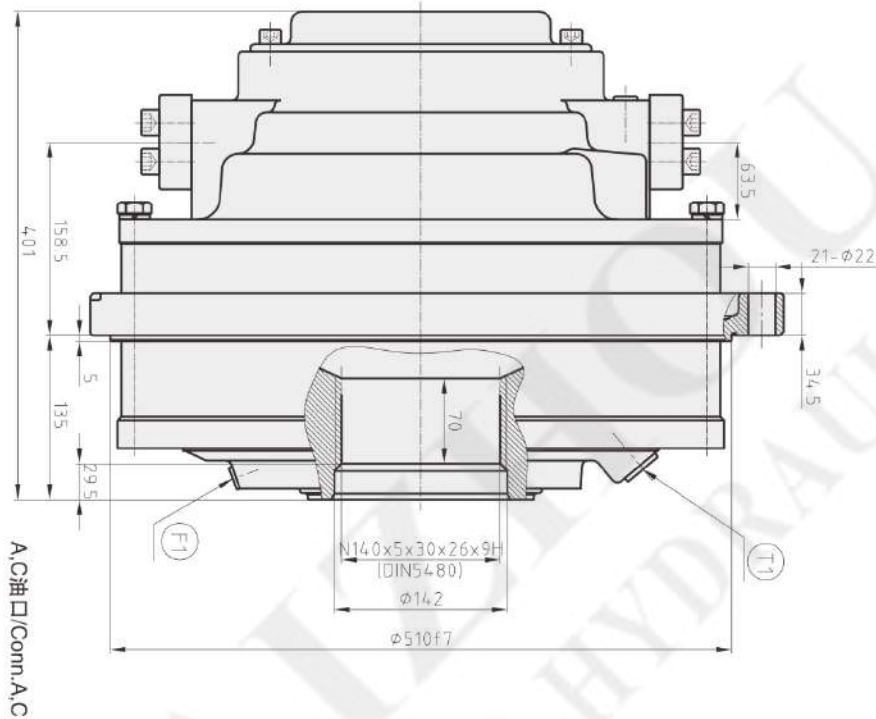
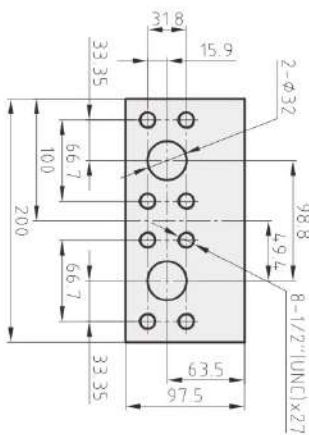
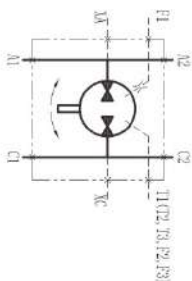
油口尺寸/Connection

主油口A Main Conn. A	主油口C Main Conn. C	泄油口 Drain Conn.	冲洗油口 Flushing Conn.	测压口 Test Conn.
A1	A2	T1	F1	XA
SAE 1 1/4"	C1	T2	F2	XC
	C2	T3	F3	
	SAE 1 1/4"	BSP3/4"	BSP1/4"	BSP1/4"

- BM
- ZM
- ZGM
- STC
- CA
- QJM
- ZYC
- ZP300
- ZYH
- PB
- ZYJ
- ZBJ
- IKY
- GFT

CA140外形及安装尺寸/ CA140 Installation Dimensions

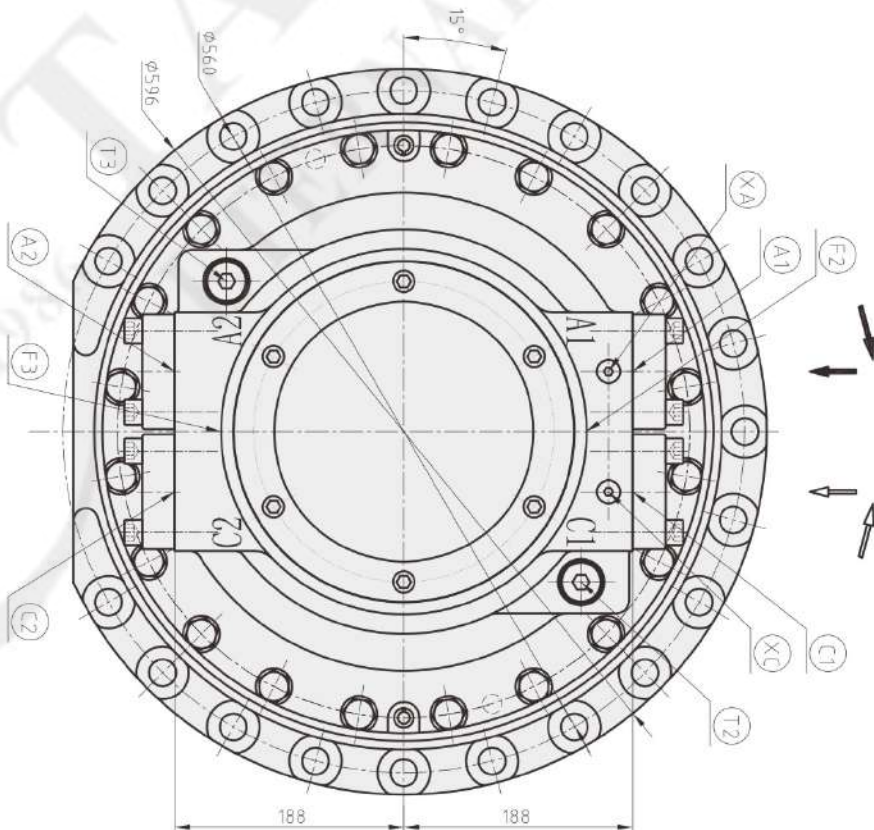
液压原理图/Hydraulic Schematic



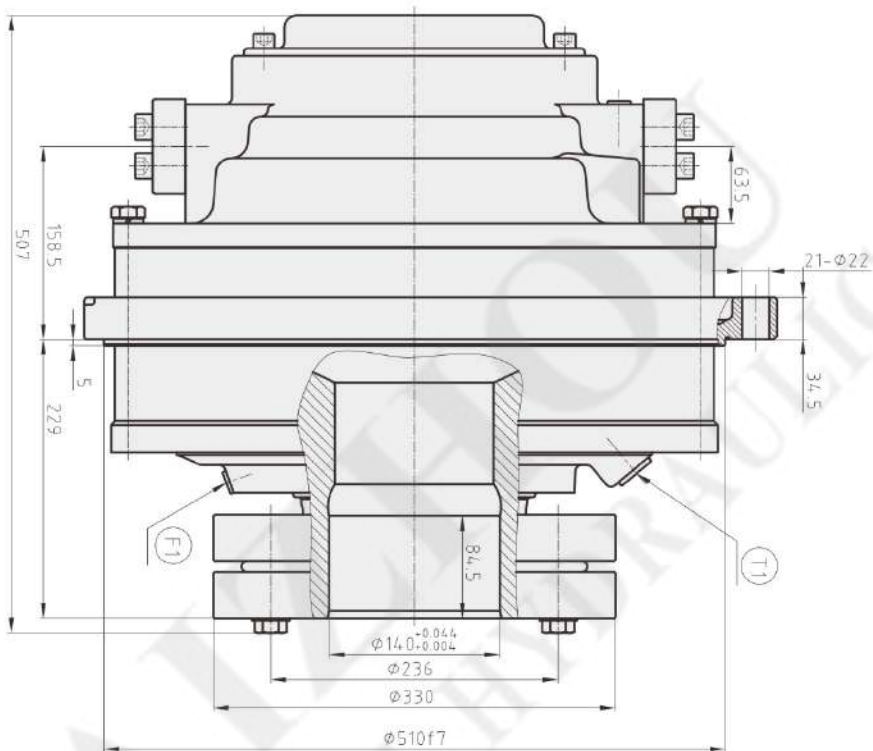
A/C油口/Conn.A,C

油口尺寸/Connection

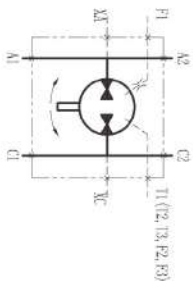
主抽口 A Main Conn. A	主抽口 C Main Conn. C	泄油口 Drain Conn.	冲洗油口 Flushing Conn.	测压口 Test Conn.
A1	C1	T1	F1	XA
A2	C2	T2	F2	XC
SAE 1 1/4"	SAE 1 1/4"	BSP 3/4"	BSP 1/4"	BSP 1/4"



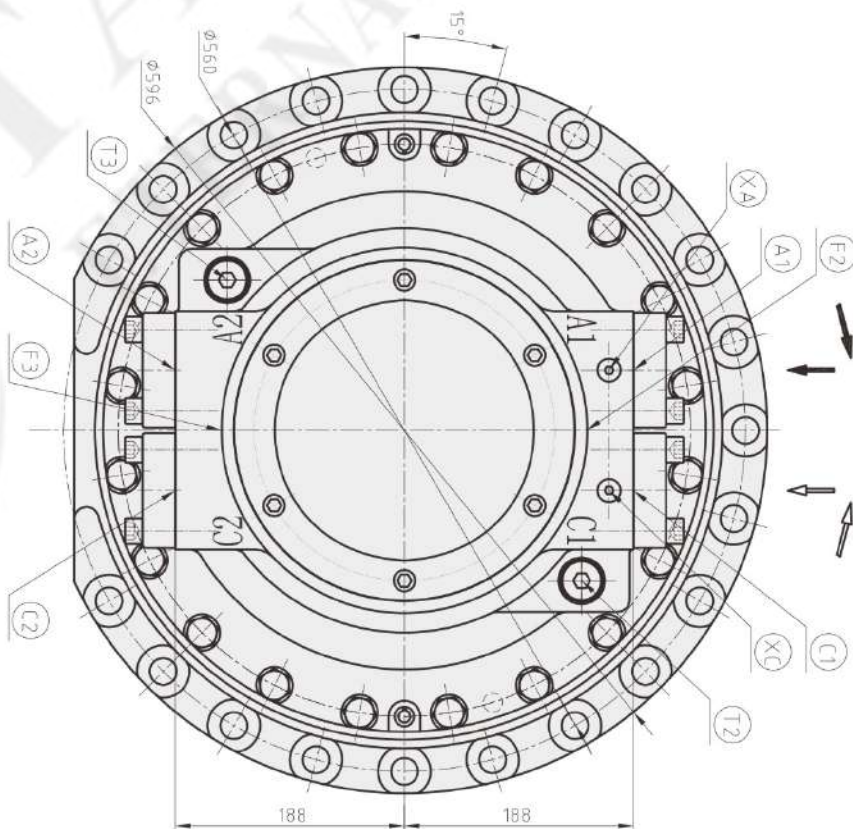
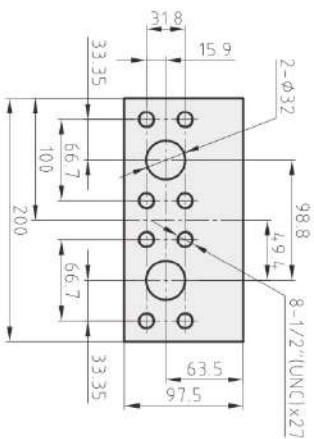
CA140外形及安装尺寸/ CA140 Installation Dimensions



液压原理图/Hydraulic Schematic



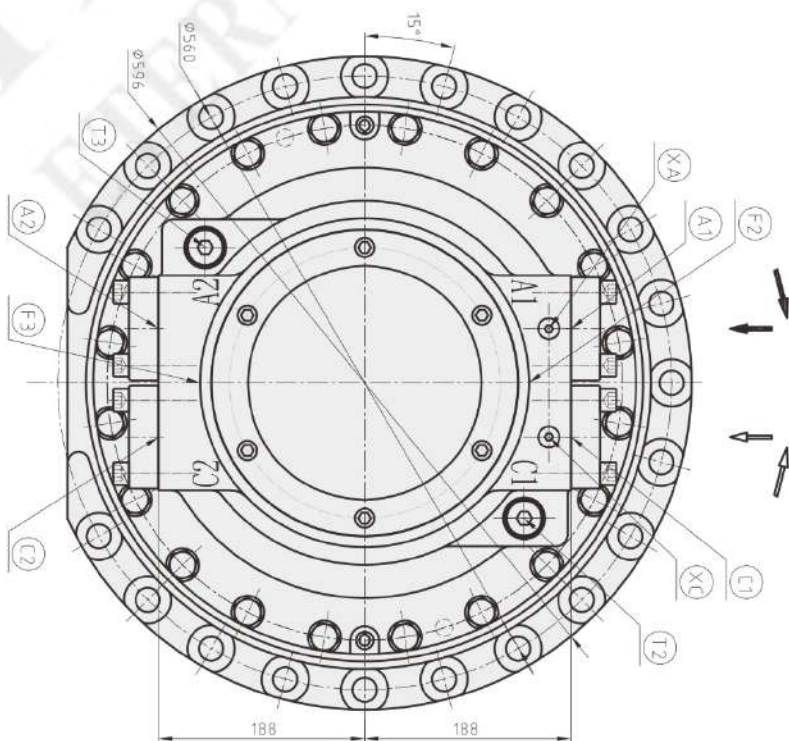
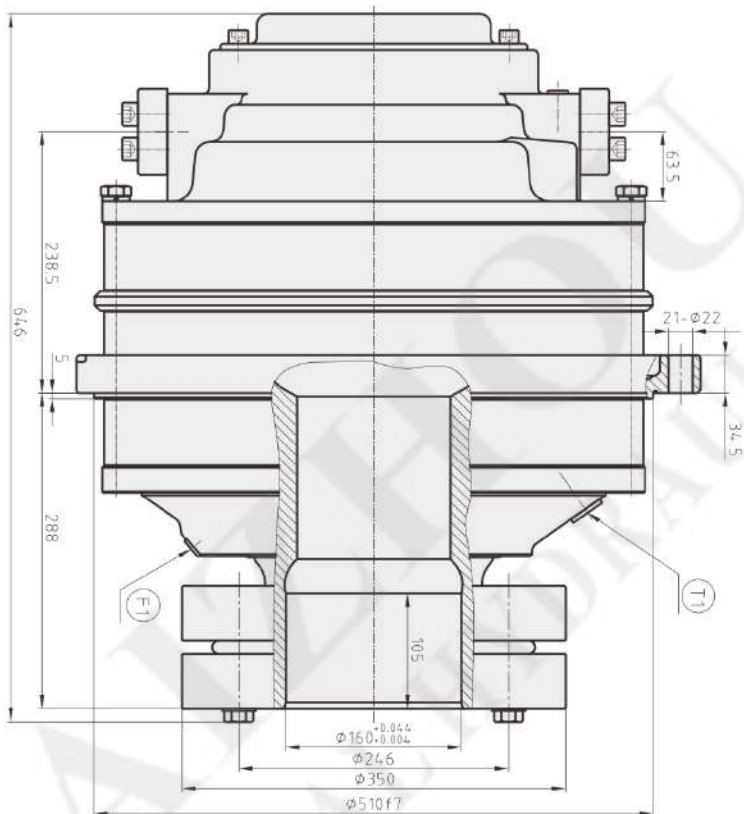
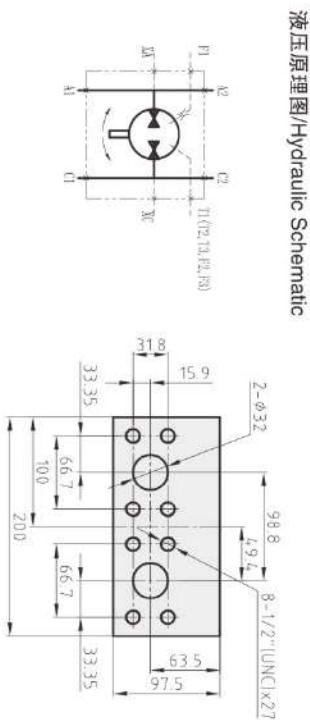
A,C油口/Conn.A,C



油口尺寸/Connection

主油口A Main Conn.A	主油口C Main Conn.C	泄油口 Drain Conn.	冲洗油口 Flushing Conn.	测压口 Test Conn.
A1 A2	C1 C2	T1 T2 T3	F1 F2 F3	XA XC
SAE 1 1/4"	SAE 1 1/4"	BSP3/4"	BSP1/4"	BSP1/4"

CA210外形及安装尺寸/ CA210 Installation Dimensions

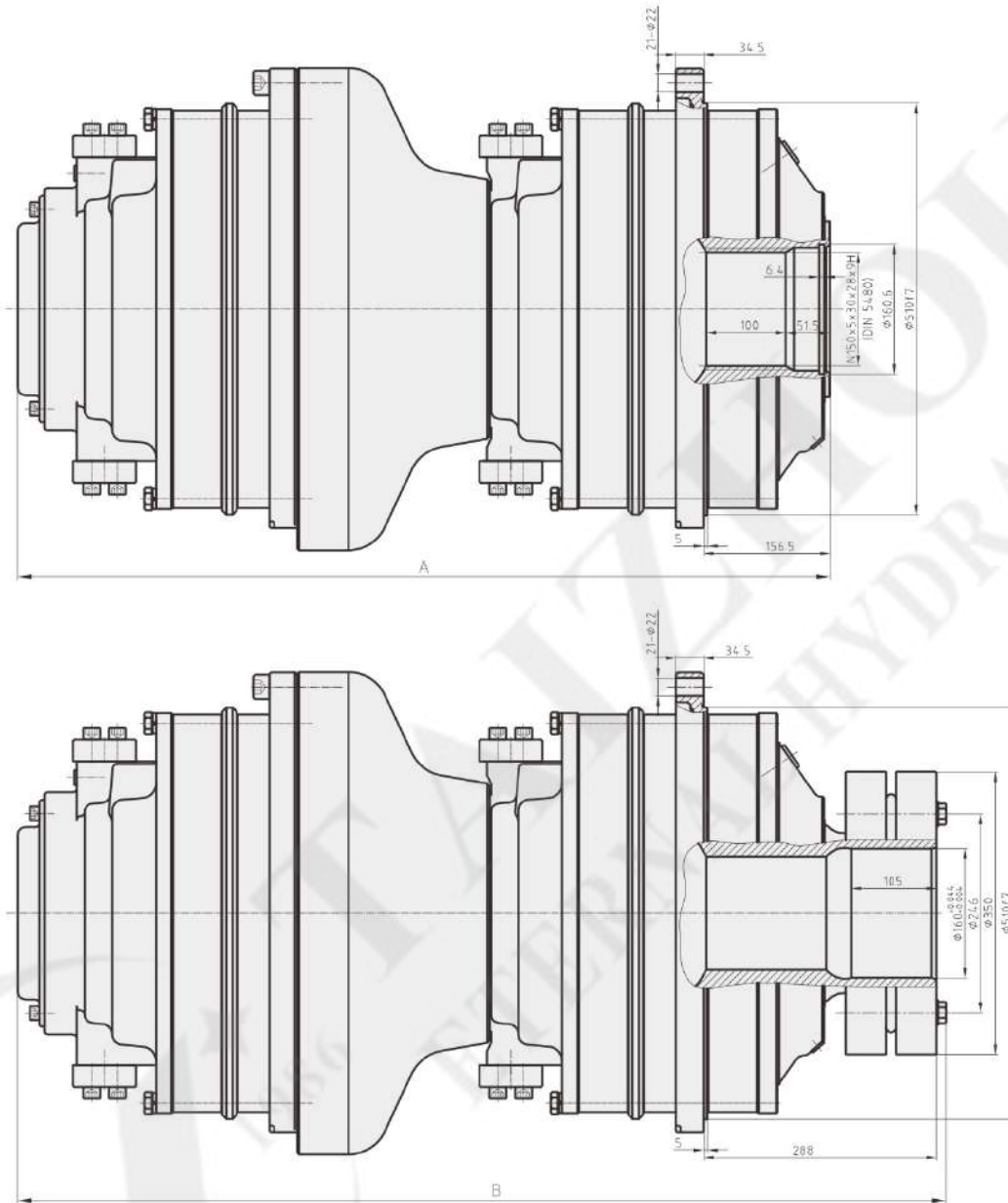


油口尺寸/Connection

主油口A Main Conn.A	主油口C Main Conn.C	泄油口 Drain Conn.	冲洗油口 Flushing Conn.	测压口 Test Conn.
A1	A2	T1	F1	XA
A2	C1	T2	F2	XC
C1	C2	T3	F3	
SAE 1 1/4"	SAE 1 1/4"	BSP3/4"	BSP1/4"	BSP1/4"

- BM
- ZM
- ZGM
- STC
- CA
- QJM
- ZYC
- ZP300
- ZYH
- PB
- ZYJ
- ZBJ
- IKY
- GFT

CA210串联马达/ CA210 Motor Connected in Series



马达型号 TYPE	最大压力 Max.Pressure	最大转速 Max.Speed	重量(花键) Weight(Spline)	重量(锁紧盘) Weight(shrink disc coupling)	尺寸A Size A	尺寸B Size B
	bar	r/min	Kg	Kg	mm	mm
CA210+CA50	240	98	619	680	826	969
CA210+CA70	220		652	713	826	969
CA210+CA100	200		768	829	924	1067
CA210+CA140	180		808	869	924	1067
CA210+CA210	160		898	959	1004	1147