

目录 / Contents



1、产品特点 / Product Feature	02
2、计算公式 / Calculation	02
3、产品标识说明 / Ordering Code	03
4、技术参数 / Technical Specification	04
5、安装联接尺寸 / Installation Dimensions	
ITM01 系列 / ITM01 Serie	05
ITM02 系列 / ITM02 Serie	06
ITM03 系列 / ITM03 Serie	08
ITM06 系列 / ITM06 Serie	10
ITM08 系列 / ITM08 Serie	12
ITM11 系列 / ITM11 Serie	13
ITM16 系列 / ITM16 Serie	15
ITM31 系列 / ITM31 Serie	17
ITM70 系列 / ITM70 Serie	19
ITM100 系列 / ITM100 Serie	20
6、通油盘种类 / Distributor	21
7、进出油口与泄漏油口的相对位置 / Port Direction	21

产品特点 / Product Feature

ITM系列液压马达是我司依据意大利型滚柱传力式径向柱塞液压马达的结构、性能特点，通过我司高标准的技术要求、高性能的生产设备及先进的生产工艺来保证，严格从细节方面控制，在综合性能特点方面完全超越意大利原厂的一款低速大扭矩液压马达。

其主要性能特点如下：

- 采用曲轴连杆结构及较低激振频率的五缸五柱塞或七缸七柱塞机构，保持原有的低噪音特点；
- 启动扭矩大，具有良好的低速稳定性，能在很低的速度下平稳运转；
- 采用平面可补偿式配油结构，可靠性好，泄漏少，维修方便；
- 旋转方向可逆，输出轴允许承受一定的径向和轴向外力。

ITM series hydraulic motor is a traditional radial piston motor what we produce for mid-pressure application. With advanced processing center, inspection machines and assembly technology, it has unimpeachable performance in domestic motors of same kind.

Main characteristics:

- Low noise due to its crankshaft & con-rod structure and cylinder & piston framework of low vibration frequency;
- Steady performance at low speed; high starting torque;
- Good reliability and less leakage due to the flat compensation distributor;
- Enable reversible rotation and certain external radial & axial force on output shaft.

计算公式 / Calculation

1、液压马达的理论输出扭矩 (Output torque) : $M=0.159 (P_1-P_2) q(N \cdot M)$

液压马达的实际输出扭矩 (Actual output torque) : $M_A=0.159 (P_1-P_2) q \cdot \eta_m(N \cdot M)$

式中 (Where) : P_1 、 P_2 —— 分别为液压马达的入口和出口压力 (MPa) inlet and outlet pressure of motors(MPa)

q —— 液压马达的排量 displacement(mL/r)

η_m —— 液压马达的机械效率 mechanical efficiency(%)

2、液压马达的理论转速 (Output speed) : $n= \frac{Q}{q}(r/min)$

液压马达的实际转速 (Practica speed) : $n_A= \frac{Q}{q} \cdot \eta_v(r/min)$

3、液压马达的理论输出功率 (Output power) : $N= \frac{M \times n}{9550} (kw)$

液压马达的实际输出功率 (Practica power) : $N_A= \frac{Q(P_1-P_2)}{60000} \eta_m \cdot \eta_v(kw)$

式中 (Where) : n —— 液压马达的转速 motor speed(r/min)

Q —— 输入液压马达的流量 input flow rate(mL/min)

η_v —— 液压马达的容积效率 volumetric efficiency(%)

产品标识说明/ Ordering Code

*** - ** - *** - *** - * - * - *

1	2	3	4	5	6	7
---	---	---	---	---	---	---

1、马达系列代号 / Model-ITM

2、系列 / Series

3、名义排量 / Displacement (ml/r)

4、输出轴形式 / Output shaft

(1) 无字母表示标准矩形花键轴(以外径定心)

No symbol—standard rectangle spline shaft(the center is up to outside diameter)

(2) B表示平键轴：注脚数字表示同型号摆线液压马达或其他品牌对应型号安装尺寸相同(带过渡法兰板)

B—Key shaft; footnote number means the installation dimension same as BM series motor or other bands(with flange)

(3) D安装联接尺寸与昆山液压件厂1JMD型同排量液压马达相同

D—installation dimension same as 1 JMD series motor(KunSan HYD element plant)

(4) I表示内花键(以内径定心)：注脚数字表示与宁波液压马达厂生产的QJM系列安装尺寸相同(带过渡法兰板)

I—female spline(the center is up to inner diameter); footnote number means the installation dimension same as QJM series motor(with flange which produced by Ningbo hydraulic motor factory)

(5) GM, SL表示安装联接尺寸与意大利SAI公司生产的M系列, L系列, 液压马达相同, 注脚数字表示不同种类安装尺寸

GM, SL—the installation dimension same as M series, L series of SAI ITALY, footnote number means different kinds of installation dimension.

5、通油盘种类/Distributors

订货时若不注明, 则按标准配置(见各系列马达外形尺寸图)。如有特殊需要, 请参考A-21页, 并在订货中注明。

If you have special request of dimensions, please state it in order, or we will treat it as our standard. (distributor options, see Page A-21)

6、进油口螺纹/ I / O port thread

标准螺纹可不标。如有特殊需要请参考A-21页, 并在订货中说明。

For special thread, please state in your order, so we will treat it as our standard. (thread options, see Page A-21)

7、进油口方向/ I / O Direction

未写明表示与马达外形图一致, 因马达安装孔按72° 等分变化, 而进油口方向按90°, 180° 位置变化, 具体要求可按油口方向图确定, 请参考A-21页。

For I/O port direction, please refer to Page A-21.

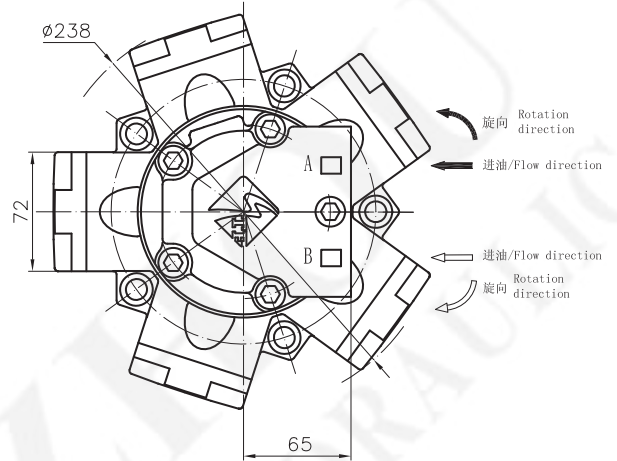
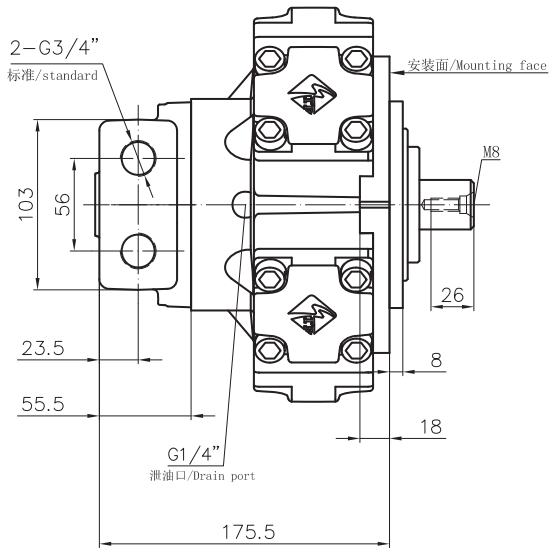
技术参数/ Technical Specification

型号 TYPE	理论排量 Theory Displacement	压力/Pressure		扭矩/Torque		最高转速 Max.Speed	额定功率 Rated Out Power	重量 Weight
		额定压力 Rated Pressure	最高压力 Max. Pressure	额定扭矩 Rated Torque	单位扭矩 Unit Torque			
		mL/r	MPa	MPa	N.m			
ITM01-63	64	16	22	150	9	450	6	21
ITM01-80	78	16	20	183	11	420	6	
ITM01-100	96	16	20	225	14	350	7	
ITM01-125	126	16	20	295	18	320	8	
ITM01-160	159	14	18	326	23	280	8	
ITM02-100	113	16	22	264	17	350	8	28
ITM02-150	159	16	20	372	23	320	11	
ITM02-175	180	16	20	421	26	320	12	
ITM02-200	206	16	20	482	30	300	13	
ITM02-250	235	14	18	481	34	300	13	
ITM02-280	276	12	16	484	40	280	12	36
ITM03-175	181	16	22	424	26	350	13	
ITM03-200	201	16	20	470	29	320	13	
ITM03-250	254	16	20	594	37	300	16	
ITM03-300	289	14	18	592	42	280	15	
ITM03-350	340	12	16	597	50	250	13	58
ITM03-400	380	12	16	667	56	250	15	
ITM06-400	397	16	22	939	59	320	27	
ITM06-450	452	16	22	1069	67	320	30	
ITM06-500	491	16	22	1162	73	300	31	
ITM06-600	594	16	20	1405	88	280	35	72
ITM06-700	683	16	20	1616	101	250	36	
ITM06-750	754	14	18	1561	111	220	31	
ITM08-600	617	16	20	1444	90	280	36	
ITM08-700	710	16	20	1662	104	260	38	
ITM08-800	810	14	18	1659	118	260	38	95
ITM08-900	889	14	18	1821	130	220	36	
ITM08-1000	1000	12	16	1755	146	200	31	
ITM11-700	682	16	22	1596	101	280	40	
ITM11-800	782	16	22	1830	116	280	46	
ITM11-900	894	16	22	2092	132	280	52	170
ITM11-1000	981	16	20	2296	145	250	51	
ITM11-1100	1104	16	20	2584	163	250	57	
ITM11-1200	1234	14	18	2527	182	220	49	
ITM11-1300	1301	14	18	2664	192	200	47	
ITM16-1400	1413	16	22	3343	209	250	74	298
ITM16-1600	1648	16	22	3899	244	250	87	
ITM16-1800	1814	16	20	4292	268	220	84	
ITM16-2000	2034	14	18	4211	301	200	75	
ITM16-2400	2267	14	18	4693	335	180	75	
ITM31-2500	2553	18	22	6722	373	200	120	550
ITM31-2800	2683	18	22	7064	392	200	126	
ITM31-3000	3063	16	22	7169	448	180	115	
ITM31-3150	3218	16	22	7532	471	180	121	
ITM31-3500	3462	16	20	8103	506	160	115	
ITM31-4000	4152	16	20	9718	607	160	138	830
ITM31-4500	4522	16	20	10584	661	160	151	
ITM31-5000	4828	14	18	9887	706	160	141	
ITM70-5000	4946	16	22	11450	716	125	120	
ITM70-5400	5452	16	22	12622	789	125	132	
ITM70-6000	5984	16	20	13853	866	100	116	830
ITM70-6300	6540	14	18	13248	946	100	111	
ITM70-7000	7122	14	18	14427	1030	100	121	
ITM100-6300	6758	16	22	15301	956	100	128	
ITM100-7000	7390	16	22	16732	1046	100	140	
ITM100-8000	7985	16	20	18079	1130	80	121	830
ITM100-9000	8636	16	20	19553	1222	80	131	
ITM100-10000	10016	14	18	19843	1417	80	133	

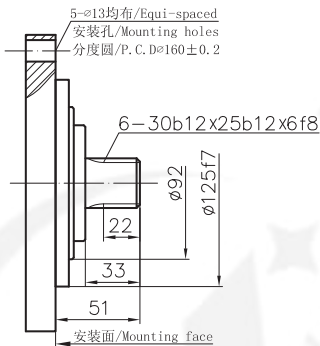
郑重申明：以上数据为实测所得，保证使用性能不低于同类系列产品！版权所有

ITM01 系列/ ITM01 Serie

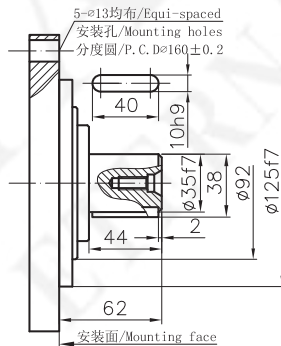
ITM01 外形及安装尺寸/ ITM01 Installation Dimensions



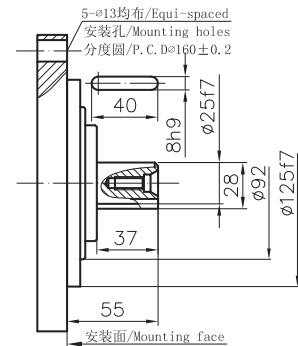
标准外花键
Involute Spline : ITM01-***



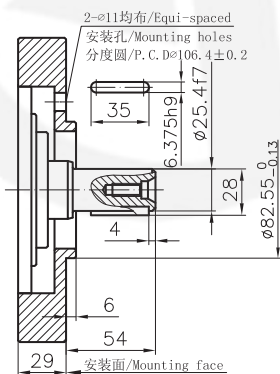
标准平键
Parallel Key : ITM01-***B



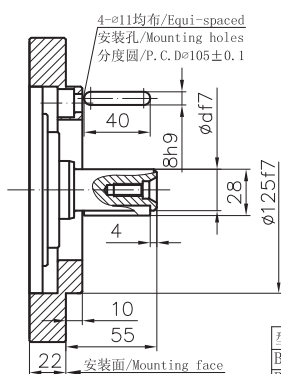
ITM01-***B₂₈



ITM01-***B₃



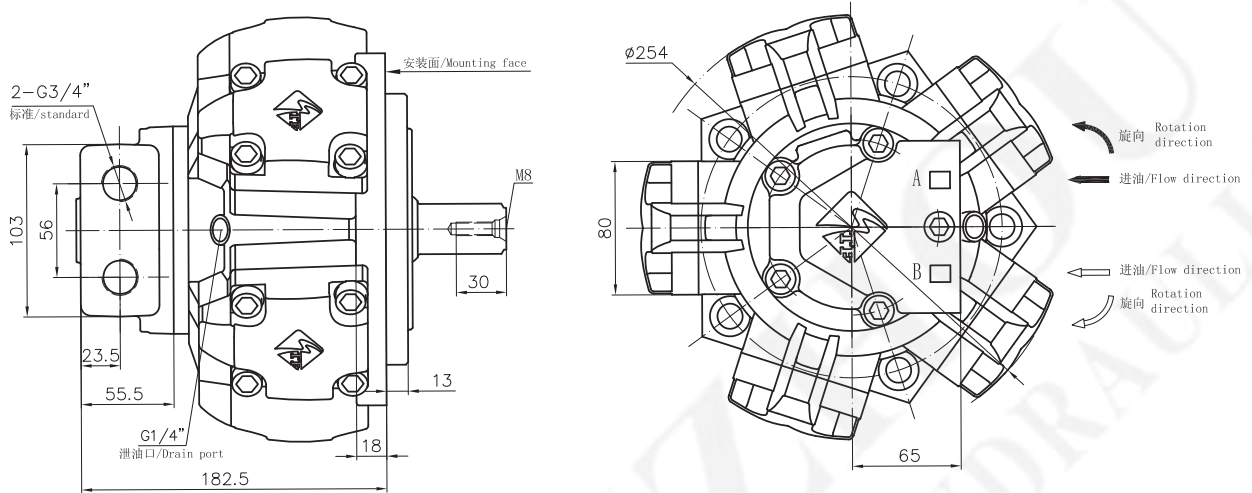
ITM01-***B₁₁、B₁₁-1



型号	d
B ₁₁	25
B ₁₁ -1	25.4

ITM02 系列/ ITM02 Serie

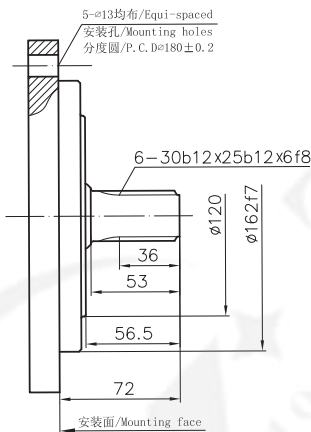
ITM02 外形及安装尺寸/ ITM02 Installation Dimensions



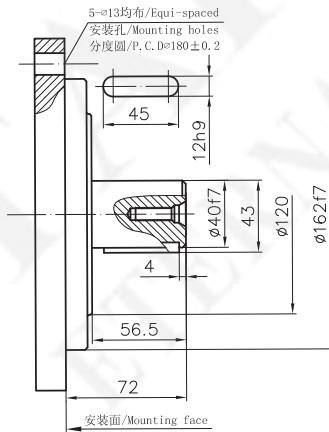
标准外花键 : ITM02-***
Involute Spline : ITM02-***

标准平键 : ITM02-***B
Parallel Key : ITM02-***B

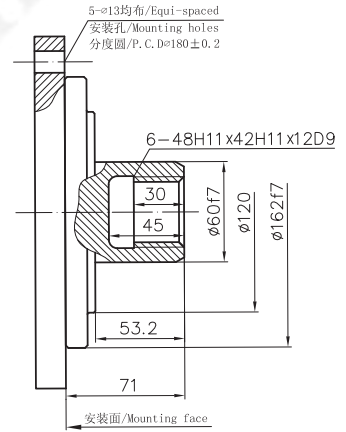
标准内花键 : ITM02-***I
Female Spline : ITM02-***I



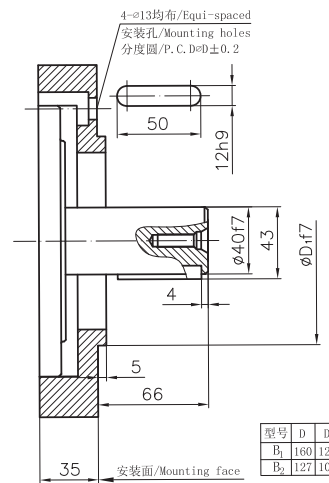
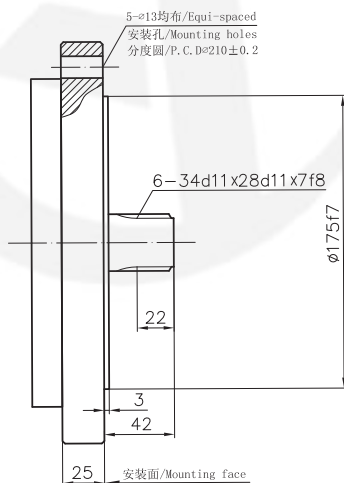
ITM02-***SL₁



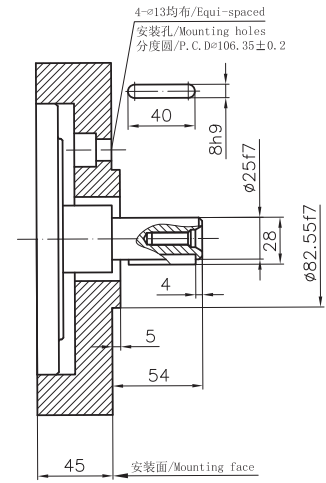
ITM02-***B₁, B₂



ITM02-***B₂₄

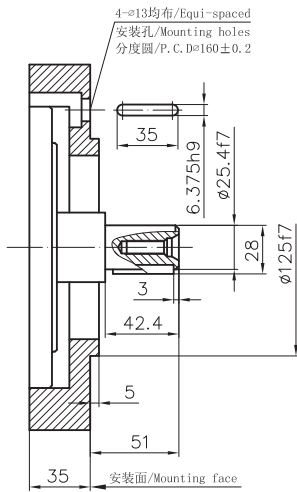


型号	D	d ₁
B ₁	160	125
B ₃	127	100

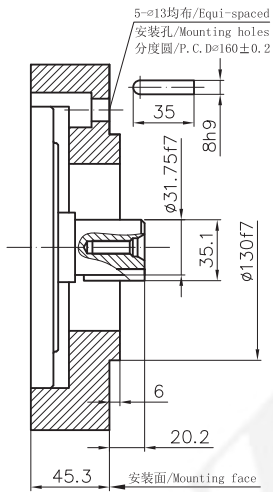


ITM02 系列/ ITM02 Serie

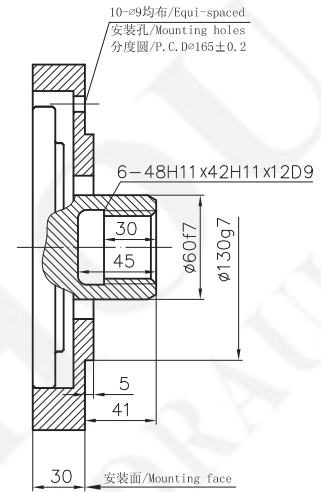
ITM02-***B₃



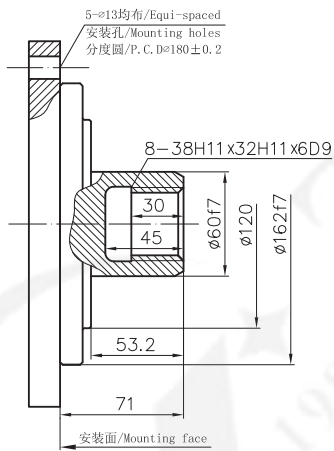
ITM02-***B₁₄



ITM02-***I₀₁、I₀₂

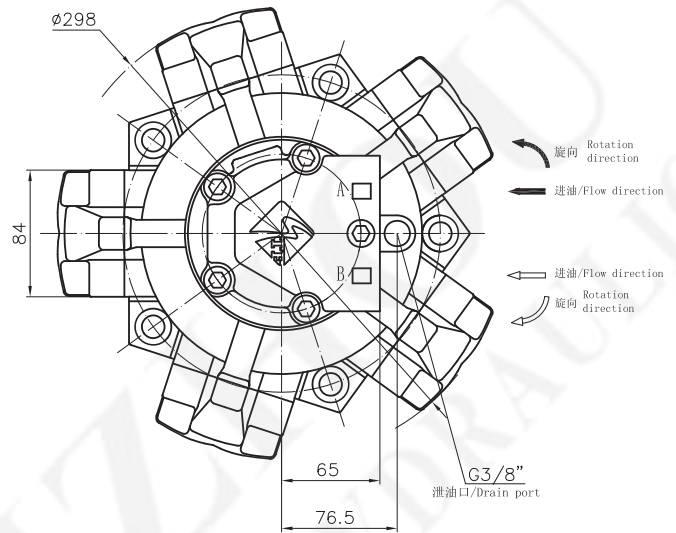
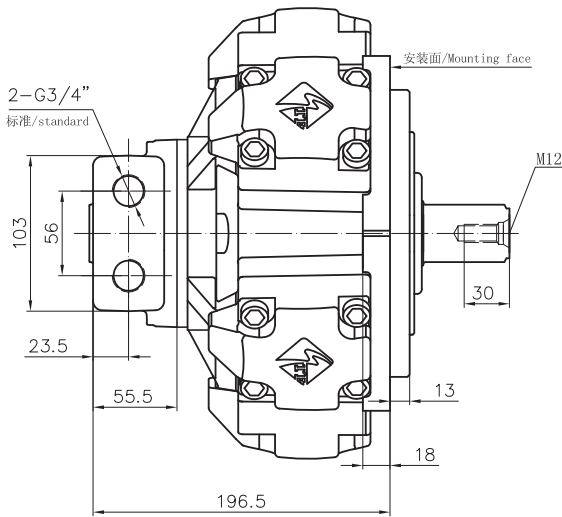


ITM02-***I₀₃



ITM03 系列/ ITM03 Serie

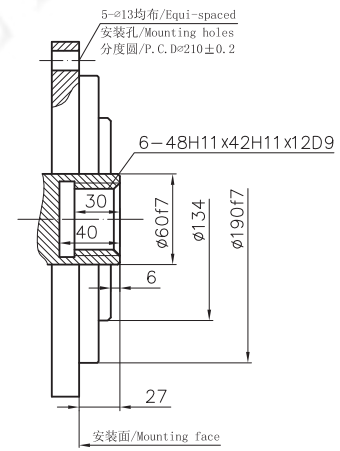
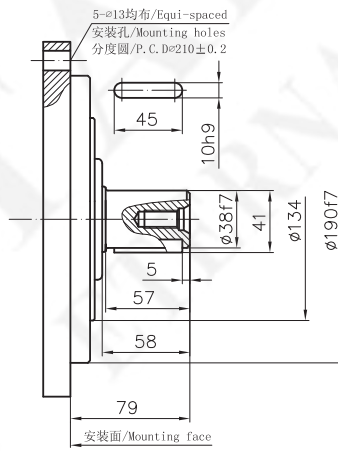
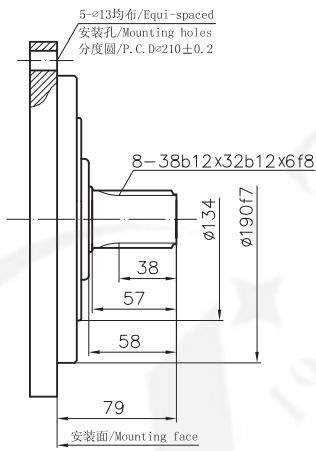
ITM03 外形及安装尺寸/ ITM03 Installation Dimensions



标准外花键 : ITM03---
Involute Spline

标准平键 : ITM03---B
Parallel Key

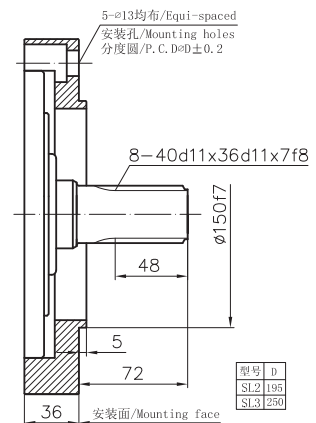
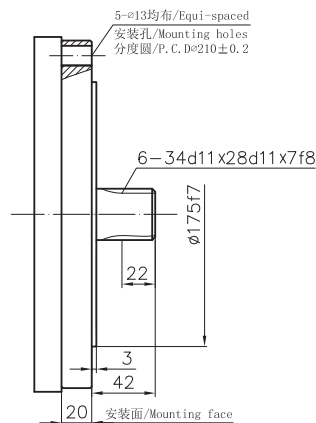
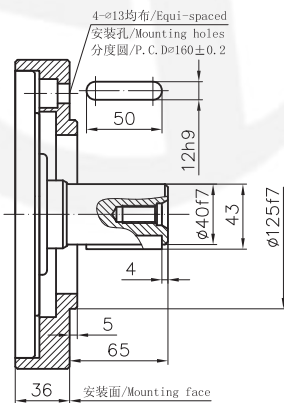
标准内花键 : ITM03---I
Female Spline



ITM03---B₁

ITM03---SL₁

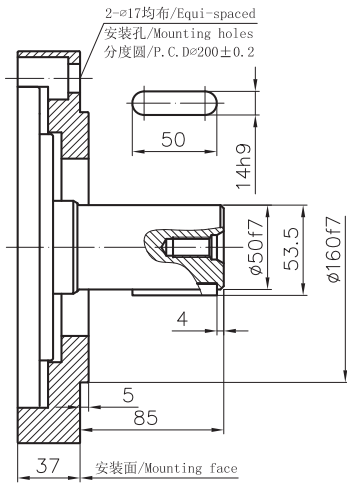
ITM03---SL₂、SL₃



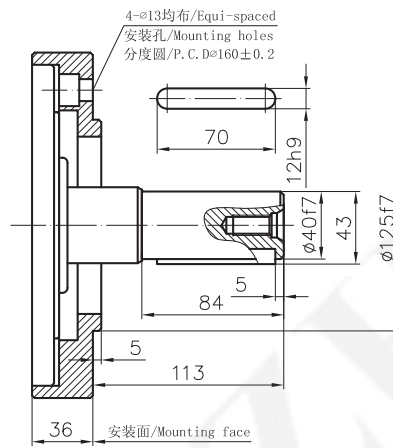
型号	D
SL2	195
SL3	250

ITM03 系列/ ITM03 Serie

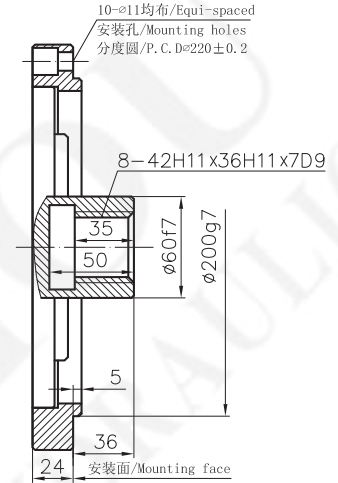
ITM03--**B₂



ITM03--**B₅

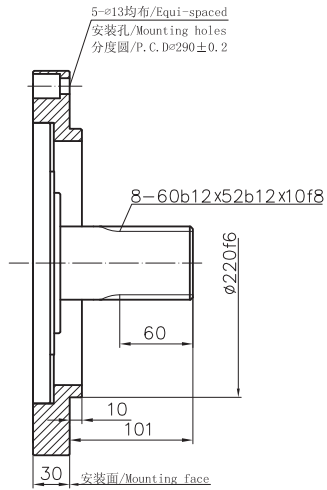


ITM03--**I_{1A1}

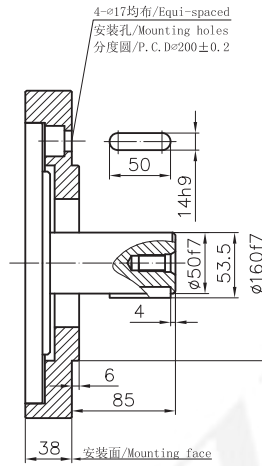


ITM06 系列/ ITM06 Serie

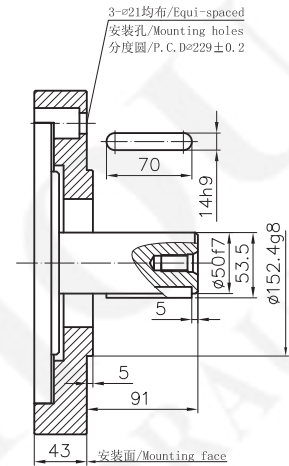
ITM06--**N₁



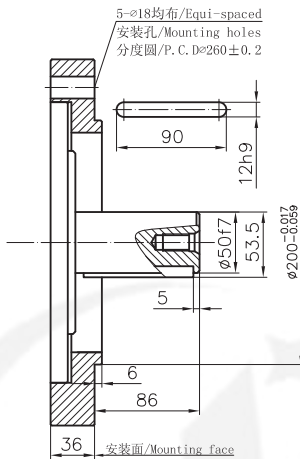
ITM06--**B₂



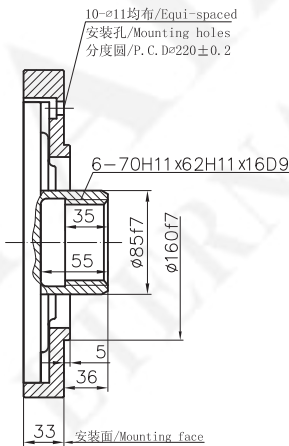
ITM06--**B₄



ITM06--**B₁₃

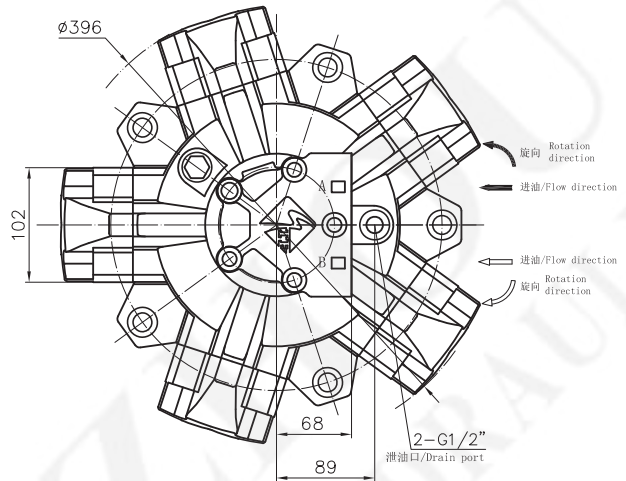
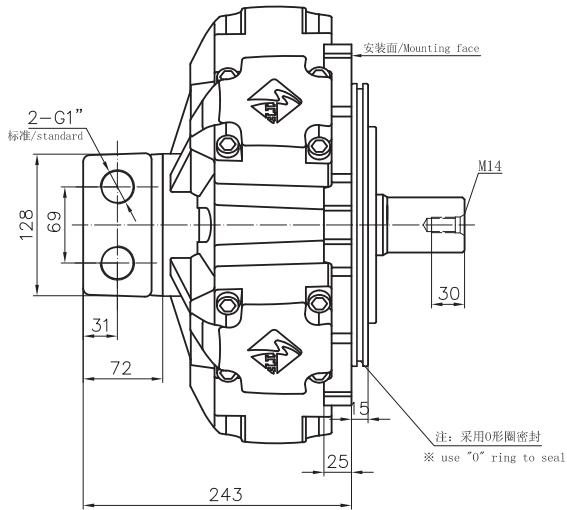


ITM06--**I₁₁



ITM08 系列/ ITM08 Serie

ITM08 外形及安装尺寸/ ITM08 Installation Dimensions

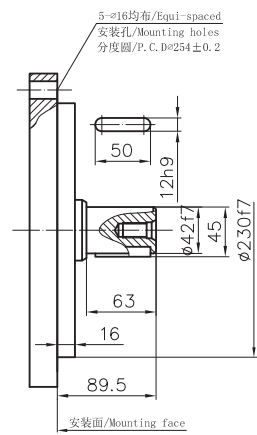
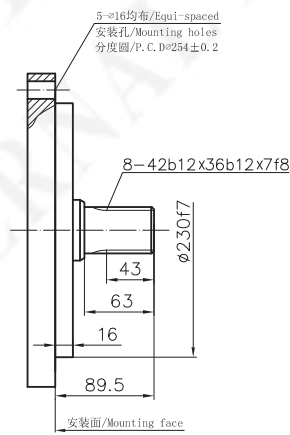
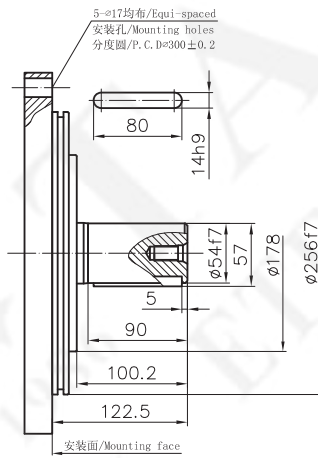
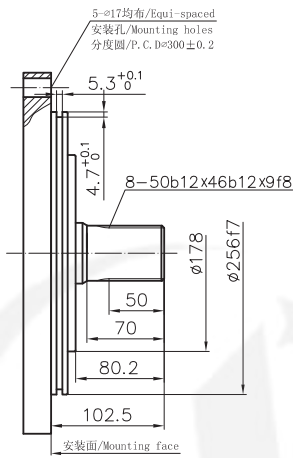


标准外花键 : ITM08-***
Involute Spline

标准平键 : ITM08-***B
Parallel Key

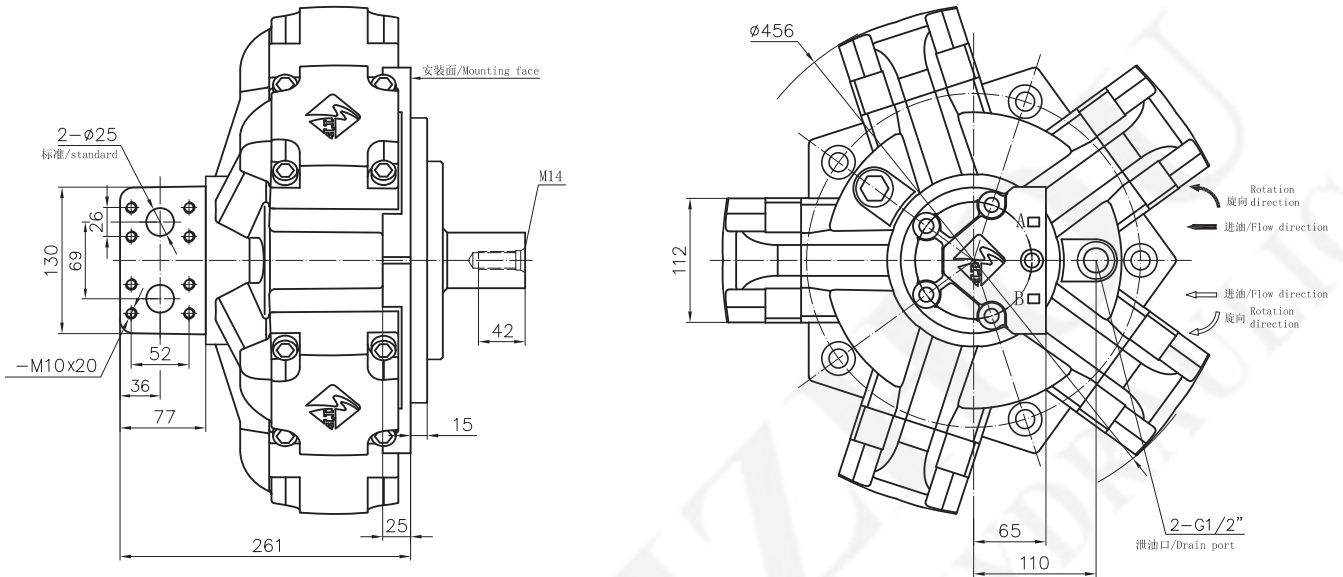
ITM08-***6M

ITM08-***6MB



ITM11 系列/ ITM11 Serie

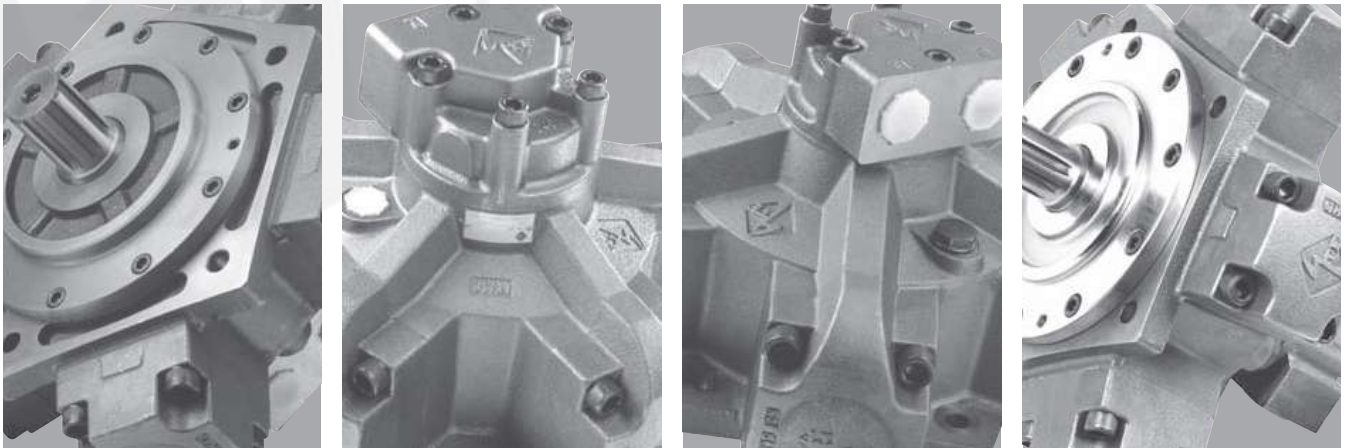
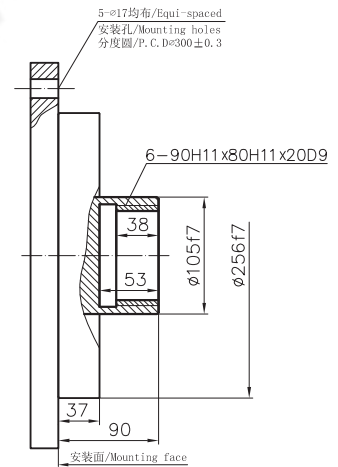
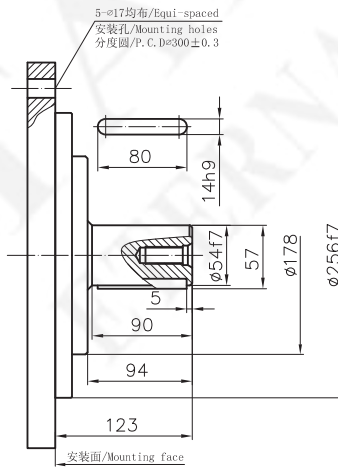
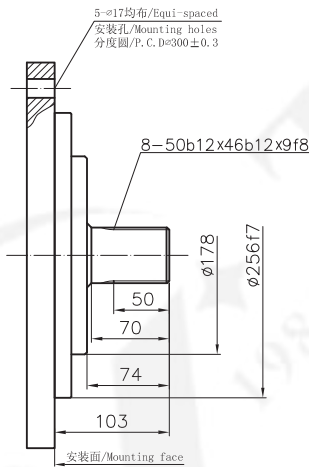
ITM11 外形及安装尺寸/ ITM11 Installation Dimensions



标准外花键
Involute Spline : ITM11-***

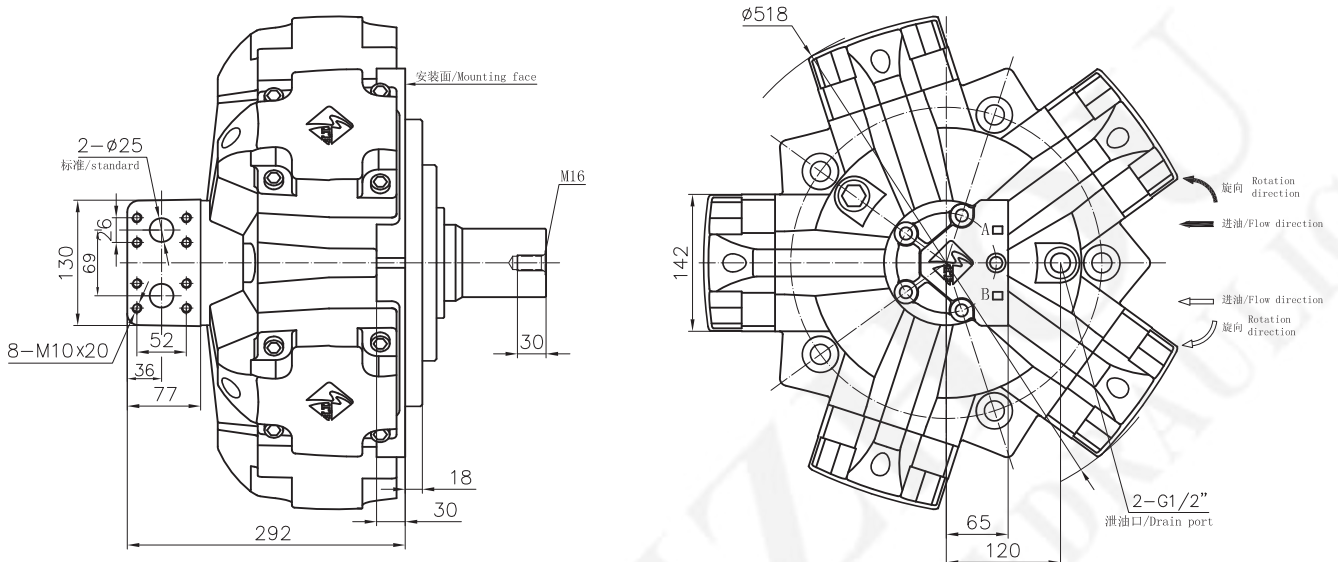
标准平键
Parallel Key : ITM11-***B

标准内花键
Female Spline : ITM11-***I



ITM16 系列/ ITM16 Serie

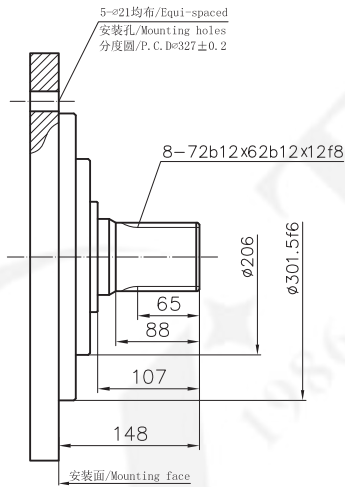
ITM16 外形及安装尺寸/ ITM16 Installation Dimensions



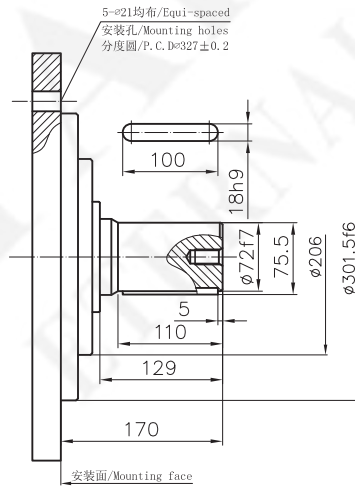
标准外花键
Involute Spline : ITM16--**

标准平键
Parallel Key : ITM16--**B

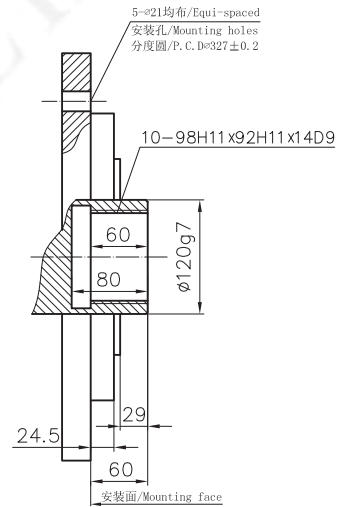
标准内花键
Female Spline : ITM16--**I



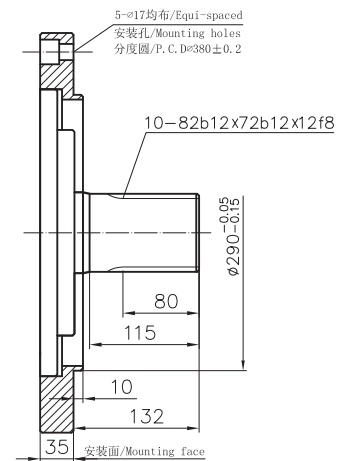
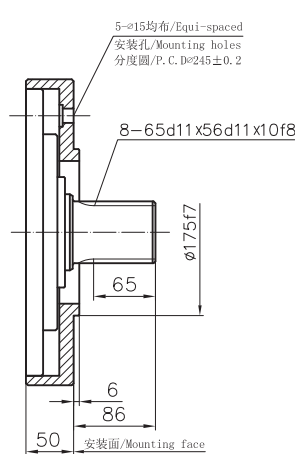
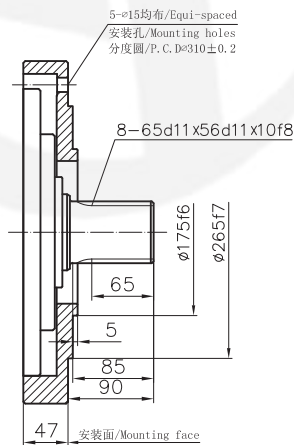
ITM16--**SL₅



ITM16--**SM₄

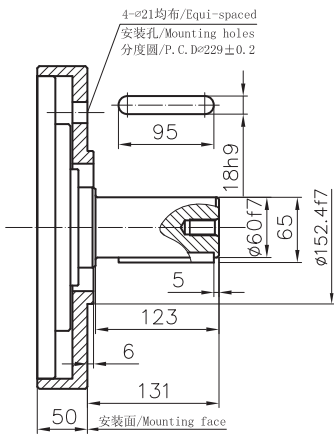


ITM16--**N

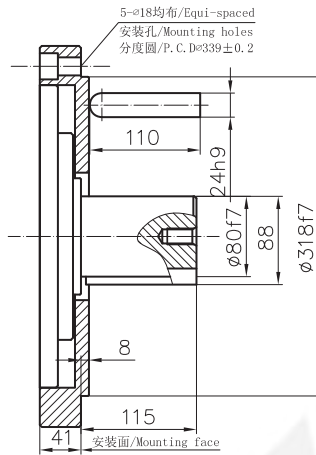


ITM16 系列/ ITM16 Serie

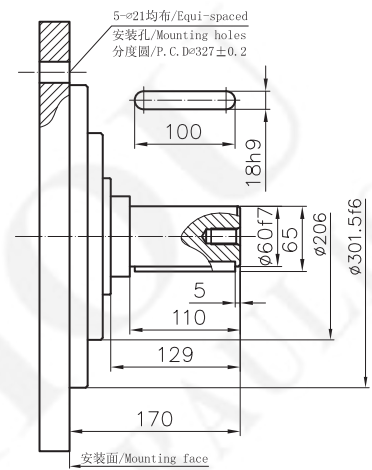
ITM16-***B₆



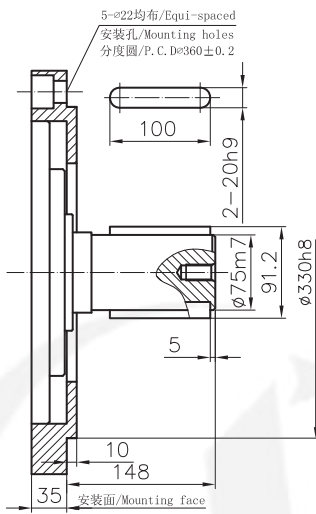
ITM16-***B₁₇



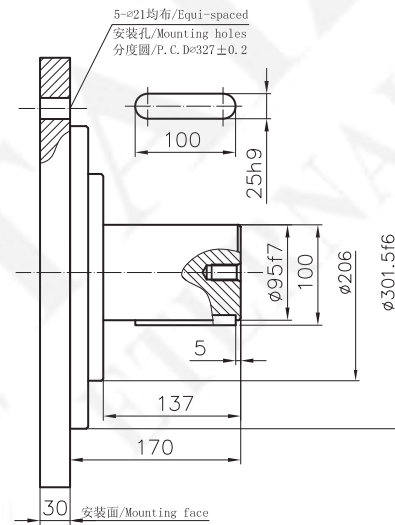
ITM16-***B₁₉



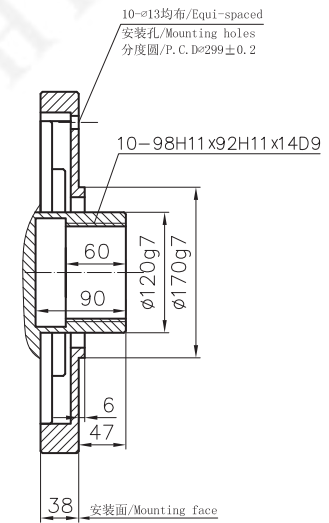
ITM16-***D



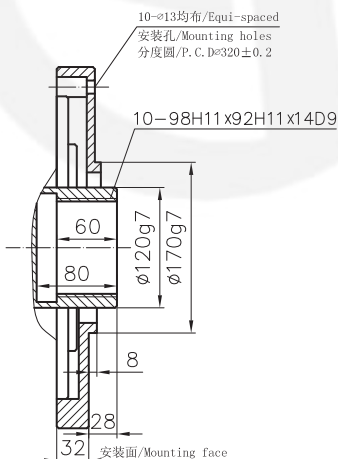
ITM16-***B₃₀



ITM16-***I₃₂

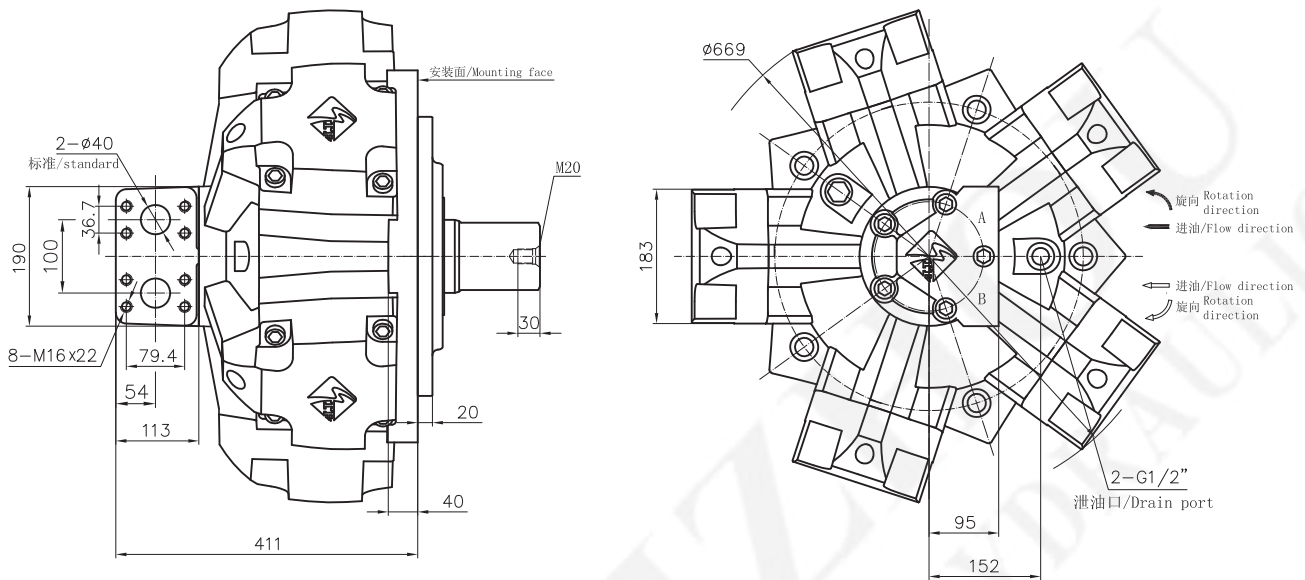


ITM16-***I₄₂



ITM31 系列/ ITM31 Serie

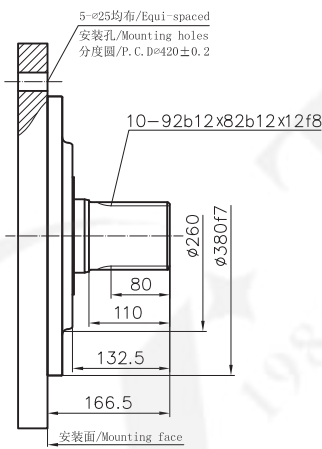
ITM31 外形及安装尺寸/ ITM31 Installation Dimensions



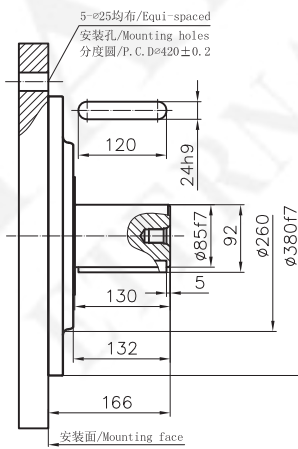
标准外花键 : ITM31---
Involute Spline

标准平键 : ITM31---B
Parallel Key

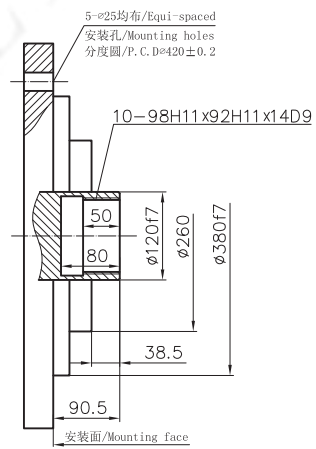
标准内花键 : ITM31---I
Female Spline



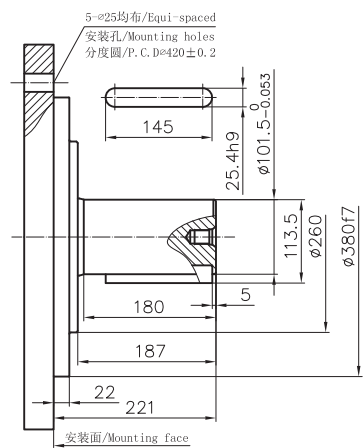
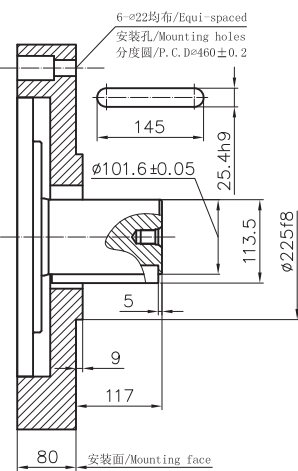
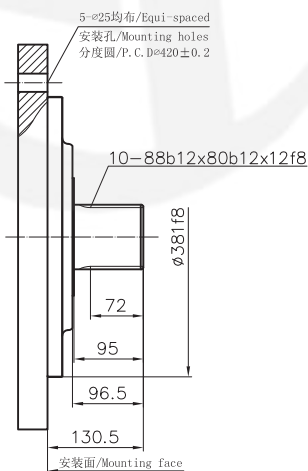
ITM31---SL₇



ITM31---B₈

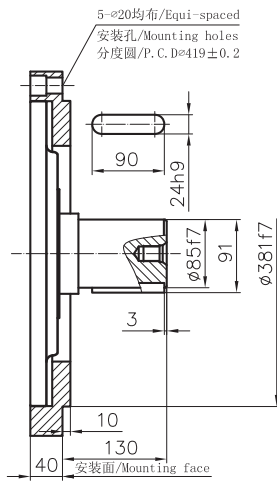


ITM31---B₁₀

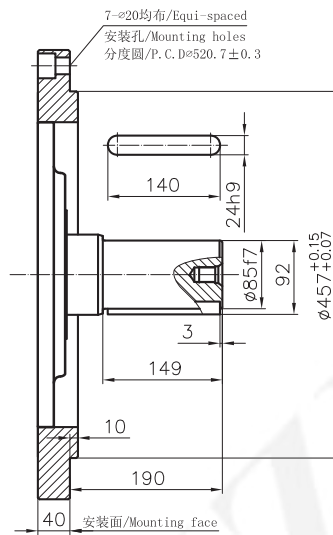


ITM31 系列/ ITM31 Serie

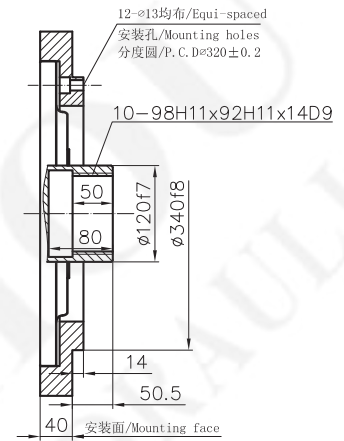
ITM31-***B₂₁



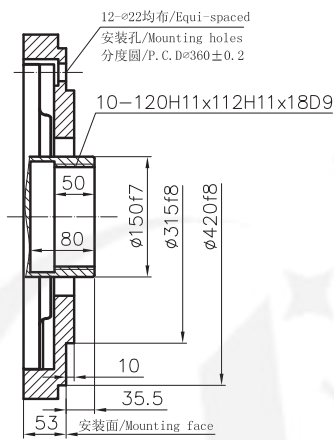
ITM31-***B₂₂



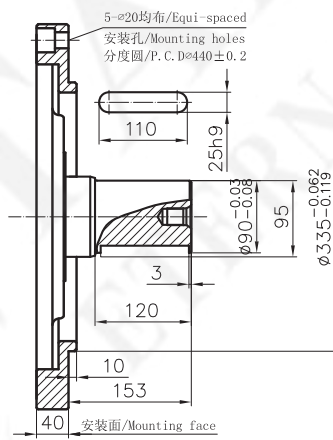
ITM31-***I₅₃₂



ITM31-***I₅₂

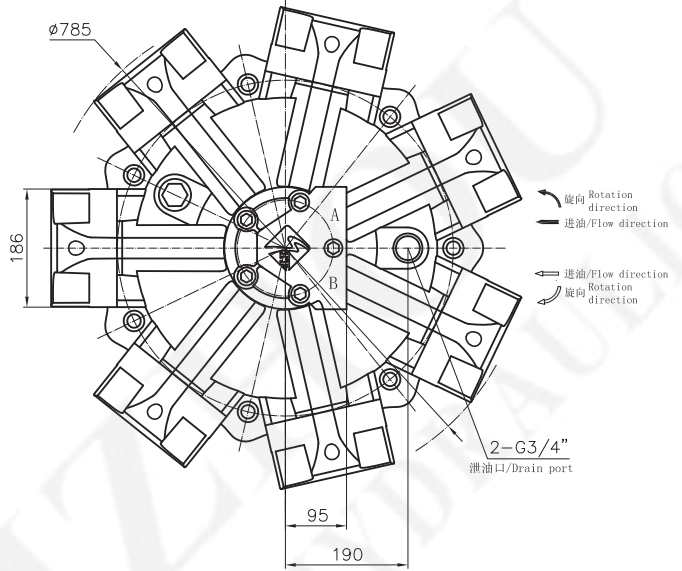
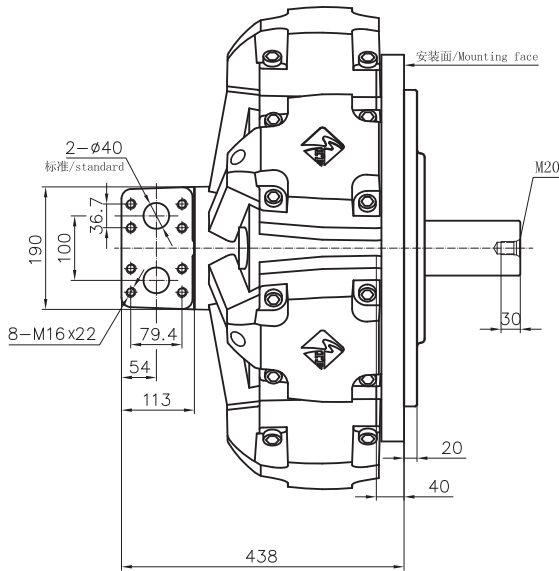


ITM31-***CB



ITM70 系列/ ITM70 Serie

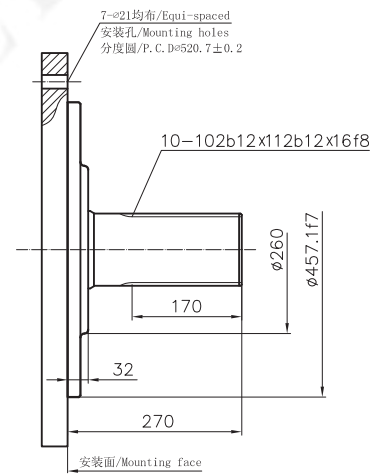
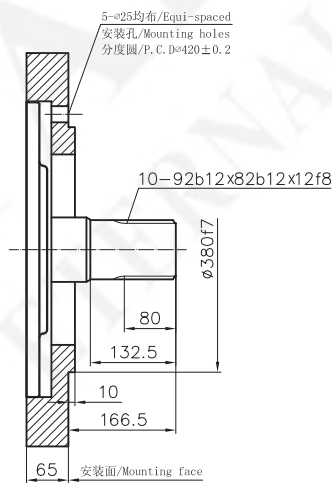
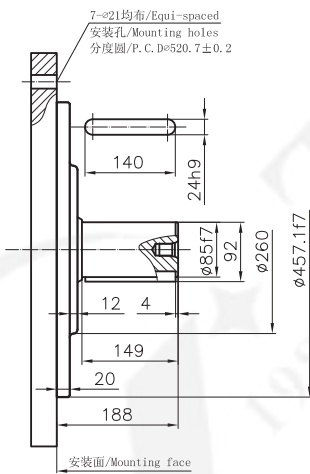
ITM70 外形及安装尺寸/ ITM70 Installation Dimensions



标准平键 : ITM70--*B
Parallel Key

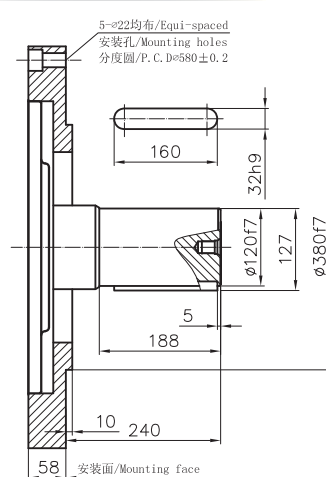
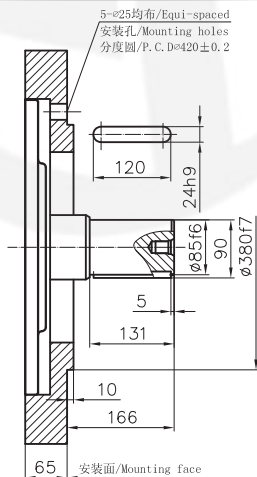
ITM70--*a₁

ITM70--*a₃



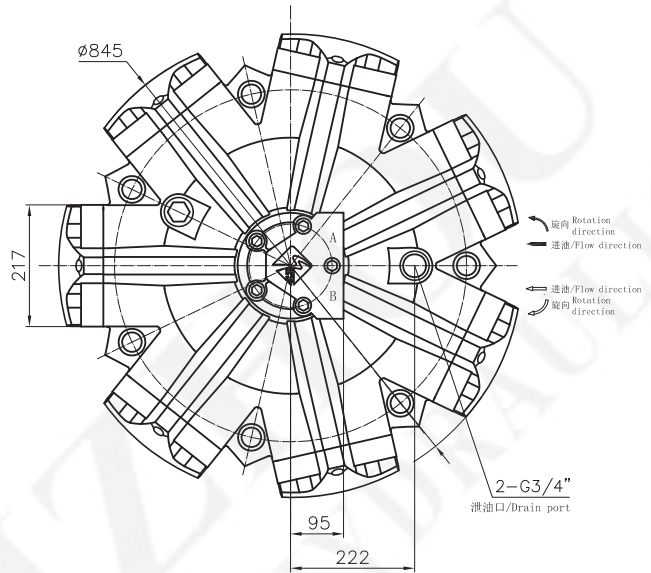
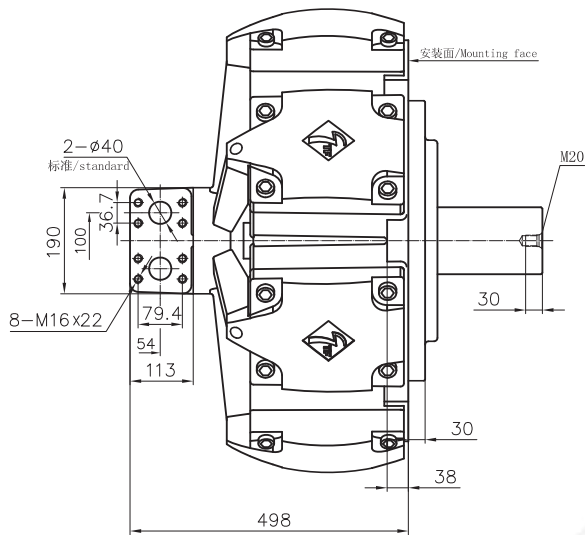
ITM70--*B₁

ITM70--*B₂



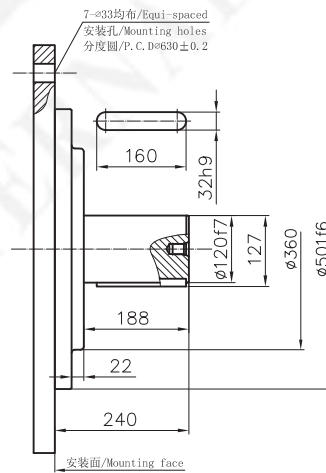
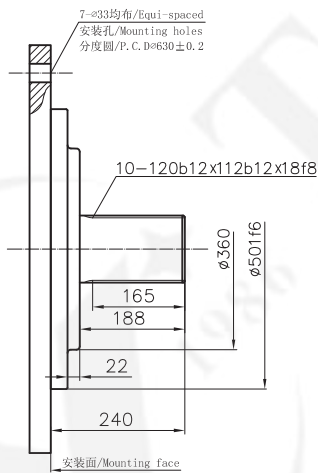
ITM100 系列/ ITM100 Serie

ITM100 外形及安装尺寸/ ITM100 Installation Dimensions



标准外花键 : ITM100-***
Involute Spline

标准平键 : ITM100-***B
Parallel Key



目录 / Contents



1、产品特点/ Product Feature	23
2、计算公式 / Calculation	23
3、产品标识说明 / Ordering Code	24
4、技术参数/ Technical Specification	25
5、安装联接尺寸/ Installation Dimensions	
ITMS03 系列/ ITMS03 Serie	26
ITMS06 系列/ ITMS06 Serie	28
ITMS09 系列/ ITMS09 Serie	30
ITMS12 系列/ ITMS12 Serie	31
ITMS18 系列/ ITMS18 Serie	33
ITMS30 系列/ ITMS30 Serie	35
ITMS50 系列/ ITMS50 Serie	37
ITMS70 系列/ ITMS70 Serie	39
ITMS100 系列/ ITMS100 Serie	40

产品特点 / Product Feature

ITMS系列液压马达是在原有ITM系列和STF系列基础上，综合其两款的优势而开发出来具有较高综合性能的新型液压马达。

其主要性能特点如下：

- 采用STF形式的柱塞体与壳体缸孔运动副，具有较高的功率质量比，并有效的提高马达的综合性能等级；
- 柱塞球窝与连杆球头采用线接触式静压油膜支承形式，有效提高接触比压及减小摩擦力，提高马达的整体工作压力和机械效率；
- 马达采用加强型满装滚子轴承，有效提高了马达的承载能力，并增强了马达抗冲击能力；
- 马达的主要传动件采用特殊材料和先进的热处理工艺，提高了整体使用寿命；
- 该系列马达的安装尺寸与ITM系列保持一致，是ITM系列马达往高压、高端发展具有高功率质量比，高性价比的一款极具吸引力的产品。

ITMS series' hydraulic motor integrates the advantage of ITM and STF series' motor. It is a new concept hydraulic motors with higher comprehensive performance;

Main characteristics:

- Same structure as STF series as removed piston sleeve, integrated body case and piston cylinder hole; featured with high power-mass ratio and technical performance;
- Applied hydrostatic oil-film modality between ball-socket of piston and ball head of con-rod to heighten its contact pressure ratio, working pressure and mechanical efficiency;
- Higher anti-impact and load performance due to its enhanced roller bearing;
- Longer service life due to special materials and advanced heat treatment in main transmitting parts;
- Same installation data as ITM series; an ideal replacement of ITM series in higher pressure & performance application.

计算公式 / Calculation

1、液压马达的理论输出扭矩 (Output torque) : $M=0.159 (P_1-P_2) q(N \cdot M)$

液压马达的实际输出扭矩 (Actual output torque) : $M_A=0.159 (P_1-P_2) q \cdot \eta_m(N \cdot M)$

式中 (Where) : P_1 、 P_2 —— 分别为液压马达的入口和出口压力 (MPa) inlet and outlet pressure of motors(MPa)

q —— 液压马达的排量 displacement(mL/r)

η_m —— 液压马达的机械效率 mechanical efficiency(%)

2、液压马达的理论转速 (Output speed) : $n = \frac{Q}{q} (r/min)$

液压马达的实际转速 (Practica speed) : $n_A = \frac{Q}{q} \cdot \eta_v (r/min)$

3、液压马达的理论输出功率 (Output power) : $N = \frac{M \times n}{9550} (kw)$

液压马达的实际输出功率 (Practica power) : $N_A = \frac{Q(P_1-P_2)}{60000} \eta_m \cdot \eta_v (kw)$

式中 (Where) : n —— 液压马达的转速 motor speed(r/min)

Q —— 输入液压马达的流量 input flow rate(mL/min)

η_v —— 液压马达的容积效率 volumetric efficiency(%)

产品标识说明 / Ordering Code

****_**_***_***_ *_*_*

1 **2** **3** **4** **5** **6** **7**

1、马达系列代号 / Model-ITMS

2、系列 / Series

3、名义排量 / Displacement (ml/r)

4、输出轴形式 / Output shaft

(1) 无字母表示标准矩形花键轴(以外径定心)

No symbol—standard rectangle spline shaft(the center is up to outside diameter)

(2) B表示平键轴：注脚数字表示同型号摆线液压马达或其他品牌对应型号安装尺寸相同(带过渡法兰板)

B—Key shaft;footnote number means the installation dimension same as BM series motor or other bands(with flange)

(3) D安装联接尺寸与昆山液压件厂1JMD型同排量液压马达相同

D—installation dimension same as 1 JMD series motor(KunSan HYD element plant)

(4) I表示内花键(以内径定心)：注脚数字表示与宁波液压马达厂生产的QJM系列安装尺寸相同(带过渡法兰板)

I—female spline(the center is up to inner diameter); footnote number means the installation dimension same as QJM series motor(with flange which produced by Ningbo hydraulic motor factory)

(5) GM, SL表示安装联接尺寸与意大利SAI公司生产的M系列, L系列, 液压马达相同, 注脚数字表示不同种类安装尺寸

GM, SL—the installation dimension same as M series, L series of SAI ITALY, footnote number means different kinds of installation dimension.

5、通油盘种类/Distributors

订货时若不注明, 则按标准配置(见各系列马达外形尺寸图)。如有特殊需要, 请参考A-21页, 并在订货中注明。

If you have special request of dimensions, please state it in order, or we will treat it as our standard. (distributor options, see Page A-21)

6、进油口螺纹/ I / O port thread

标准螺纹可不标。如有特殊需要请参考A-21页, 并在订货中说明。

For special thread, please state in your order, so we will treat it as our standard. (thread options, see Page A-21)

7、进油口方向/ I / O Direction

未写明表示与马达外形图一致, 因马达安装孔按72°等分变化, 而进油口方向按90°, 180°位置变化, 具体要求可按油口方向图确定, 请参考A-21页。

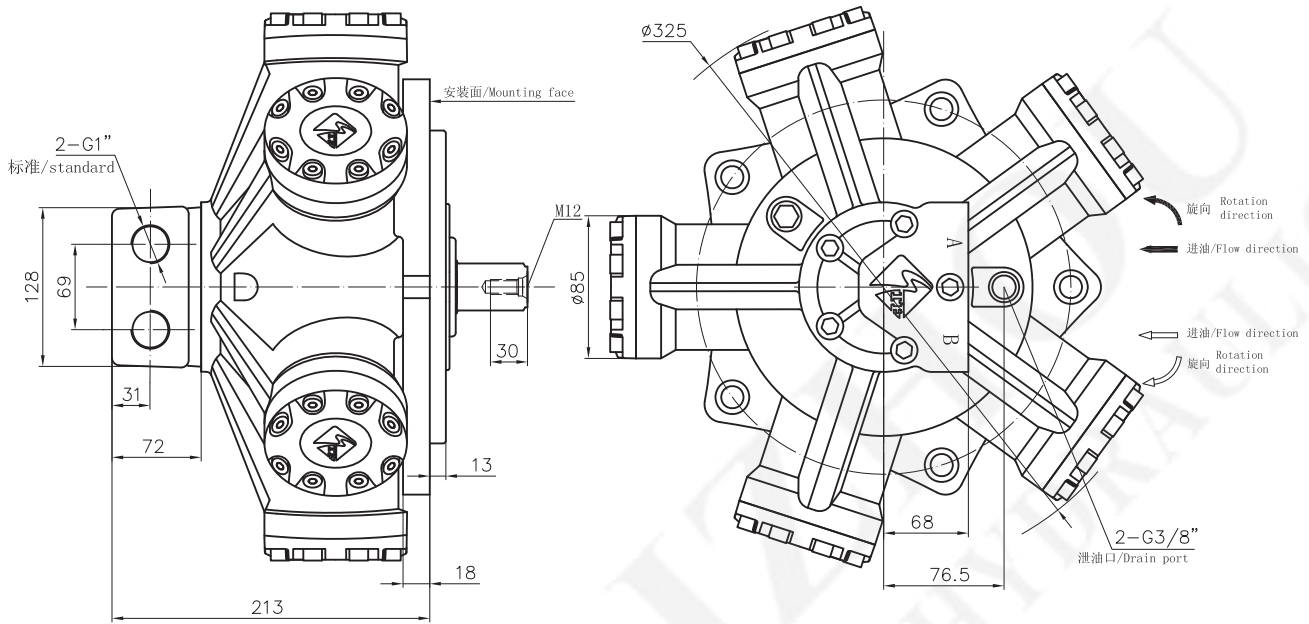
For I/O port direction, please refer to Page A-21.

技术参数/ Technical Specification

型号 TYPE	理论排量 Theory Displacement mL/r	压力/Pressure		扭矩/Torque		最高转速 Max.Speed r/min	额定功率 Rated Out Power KW	重量 Weight kg
		额定压力 Rated Pressure MPa	最高压力 Max. Pressure MPa	额定扭矩 Rated Torque N.m	单位扭矩 Unit Torque N.m/MPa			
		ITMS03-63	68	20	25			
ITMS03-80	79	20	25	231	12	450	8	
ITMS03-100	102	20	25	298	15	450	10	
ITMS03-125	125	20	25	366	18	450	11	
ITMS03-160	159	20	25	465	23	450	14	
ITMS03-175	181	20	25	530	26	450	17	
ITMS03-200	201	20	25	588	29	420	18	
ITMS03-250	254	20	25	743	37	300	16	
ITMS03-280	289	18	22	761	42	260	13	
ITMS06-250	255	20	25	746	37	450	30	55
ITMS06-280	275	20	25	805	40	450	32	
ITMS06-300	294	20	25	860	43	450	34	
ITMS06-350	353	20	25	1033	52	450	41	
ITMS06-400	393	20	25	1150	57	450	46	
ITMS06-450	451	20	25	1319	66	450	53	
ITMS06-500	491	20	25	1436	72	420	54	
ITMS06-600	594	20	25	1738	87	300	46	
ITMS06-700	683	18	22	1798	100	260	42	
ITMS06-750	754	16	20	1765	110	220	35	
ITMS09-630	630	22	27.5	1983	90	280	41	95
ITMS09-800	779	22	27.5	2452	111	280	50	
ITMS09-900	904	20	25	2587	129	250	47	
ITMS09-1000	1038	18	22	2674	149	250	45	
ITMS09-1250	1240	16	20	2839	177	200	39	
ITMS12-500	499	20	25	1460	73	450	58	90
ITMS12-600	592	20	25	1732	87	450	69	
ITMS12-700	717	20	25	2098	105	450	84	
ITMS12-800	810	20	25	2370	118	450	95	
ITMS12-900	888	20	25	2598	130	420	97	
ITMS12-1000	975	20	25	2852	143	350	89	
ITMS12-1100	1096	18	22	2886	160	300	77	
ITMS12-1200	1225	16	20	2867	179	300	77	
ITMS12-1300	1292	16	20	3024	189	220	59	
ITMS18-1250	1248	22	27.5	3929	179	300	86	160
ITMS18-1400	1418	22	27.5	4464	203	280	92	
ITMS18-1600	1616	22	27.5	5087	231	250	93	
ITMS18-1800	1815	22	27.5	5714	260	220	92	
ITMS18-2000	2035	20	25	5824	291	200	85	
ITMS18-2400	2267	20	25	6488	324	180	86	
ITMS18-2500	2512	18	22	6470	359	165	73	
ITMS18-3000	2822	16	20	6461	404	150	66	
ITMS30-2000	2041	22	27.5	6425	292	200	114	210
ITMS30-2200	2237	22	27.5	7043	320	200	125	
ITMS30-2500	2551	22	27.5	8031	365	200	143	
ITMS30-2800	2813	20	25	8051	403	200	143	
ITMS30-3000	3029	20	25	8669	433	160	123	
ITMS30-3150	3159	20	25	9041	452	160	129	
ITMS30-3500	3467	18	22	8930	496	160	127	
ITMS50-3500	3514	22	27.5	11063	503	200	185	
ITMS50-4000	4274	22	27.5	13455	612	180	203	287
ITMS50-4500	4522	20	25	12942	647	180	195	
ITMS50-5000	5087	20	25	14559	728	160	195	
ITMS50-5400	5520	18	22	14218	790	140	167	
ITMS70-5400	5585	20	25	15807	790	125	176	480
ITMS70-6000	5984	20	25	16936	847	115	173	
ITMS70-6300	6383	20	25	18065	903	100	161	
ITMS70-7000	6976	18	22	17769	987	100	158	
ITMS70-8000	7981	16	20	18070	1129	100	161	
ITMS100-8000	8012	20	25	22421	1121	100	188	580
ITMS100-9000	9013	20	25	25222	1261	100	211	
ITMS100-10000	10816	18	22	27241	1513	100	228	
ITMS100-11600	11632	18	22	29296	1628	80	196	
ITMS100-12500	12477	16	20	27933	1746	80	187	
ITMS100-13200	13353	14	18	26157	1868	80	175	

ITMS03 系列/ ITMS03 Serie

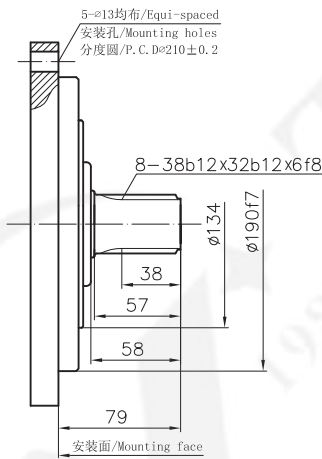
ITMS03 外形及安装尺寸/ ITMS03 Installation Dimensions



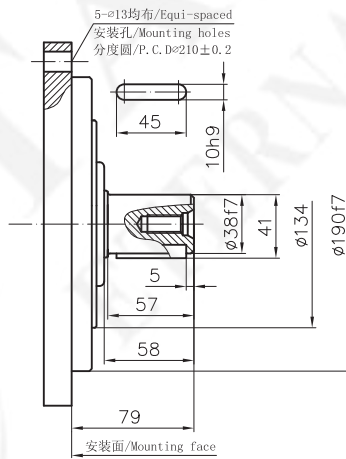
标准外花键 : ITMS03---
Involute Spline : ITMS03---

标准平键 : ITMS03---B
Parallel Key : ITMS03---B

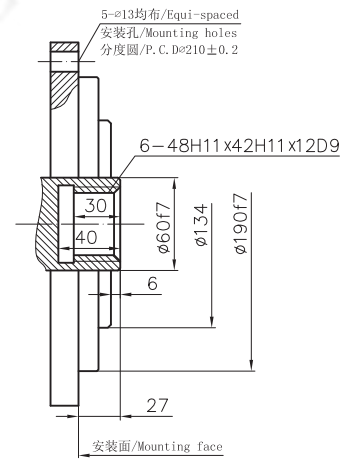
标准内花键 : ITMS03---I
Female Spline : ITMS03---I



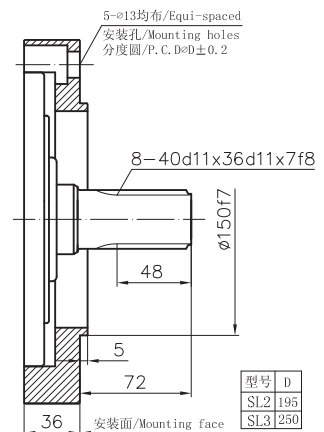
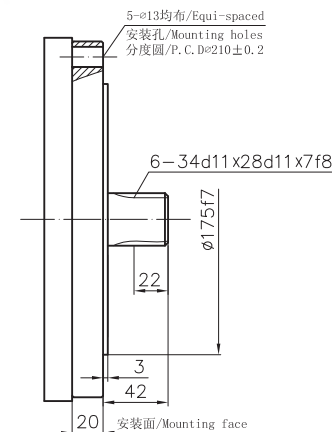
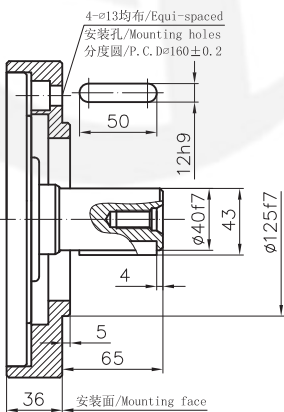
ITMS03---B₁



ITMS03---SL₁



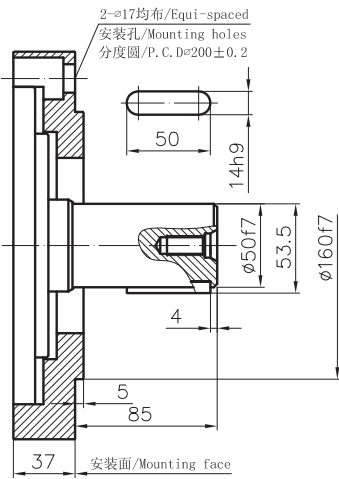
ITMS03---SL₂, SL₃



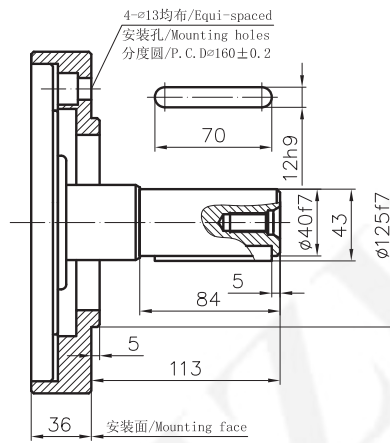
型号	D
SL2	195
SL3	250

ITMS03 系列/ ITMS03 Serie

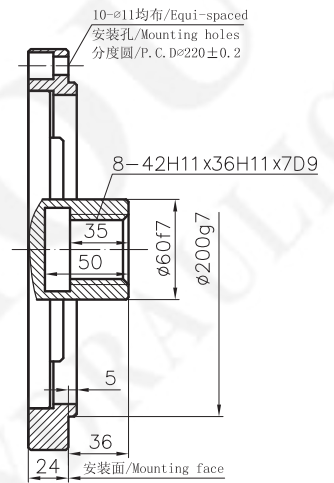
ITMS03-**B₂



ITMS03-**B₅

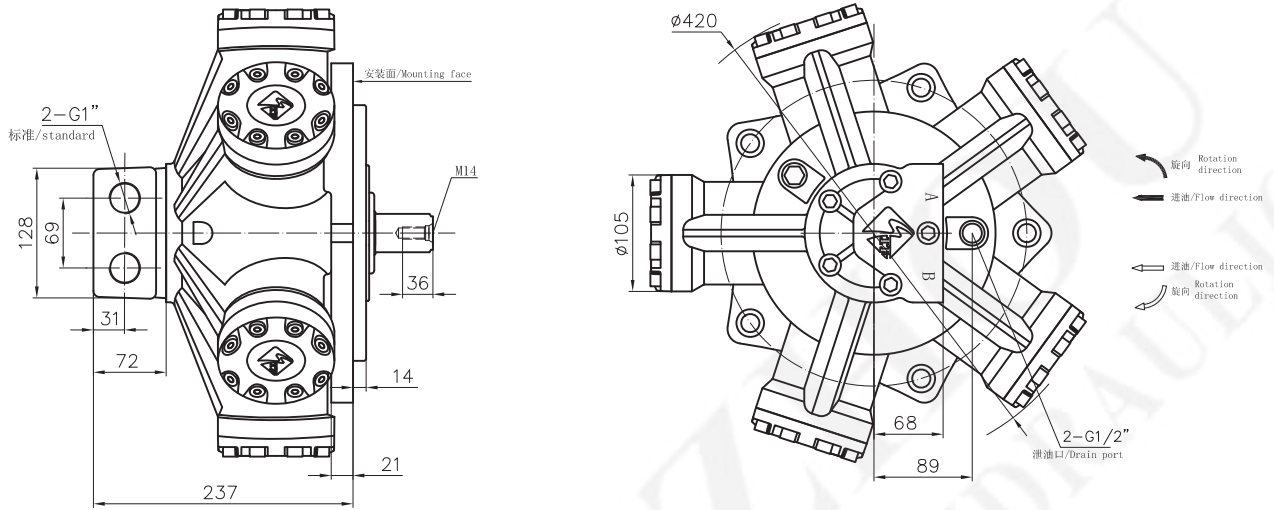


ITMS03-**I_{1A1}



ITMS06 系列/ ITMS06 Serie

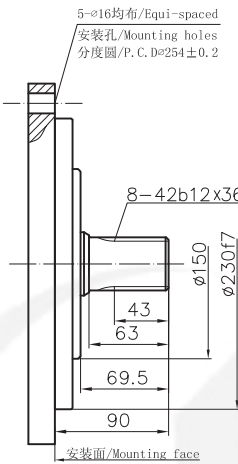
ITMS06 外形及安装尺寸/ ITMS06 Installation Dimensions



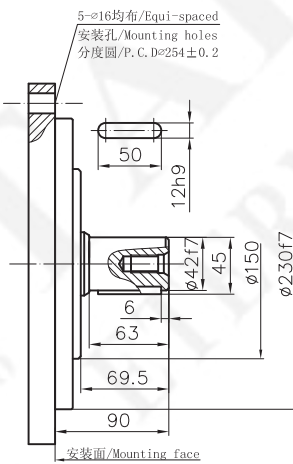
标准外花键 : ITMS06--**
Involute Spline

标准平键 : ITMS06--**B
Parallel Key

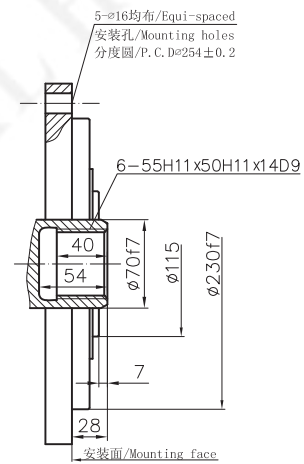
标准内花键 : ITMS06--**I
Female Spline



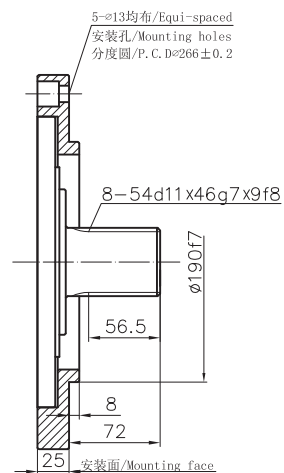
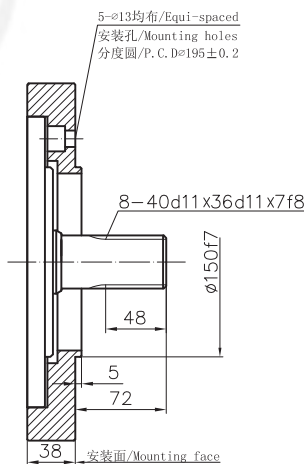
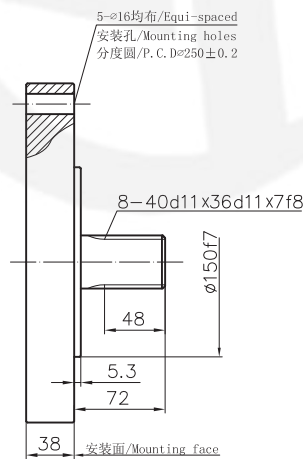
ITMS06--**SL₃



ITMS06--**SL₂

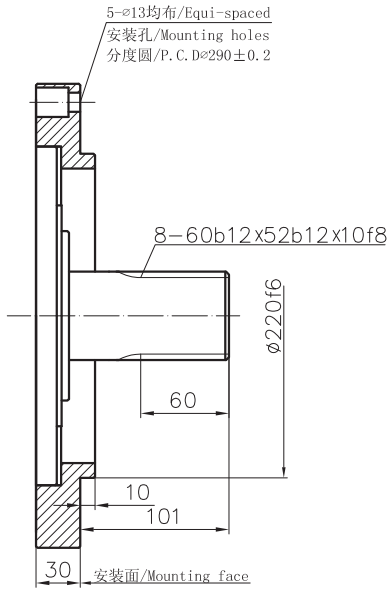


ITMS06--**N

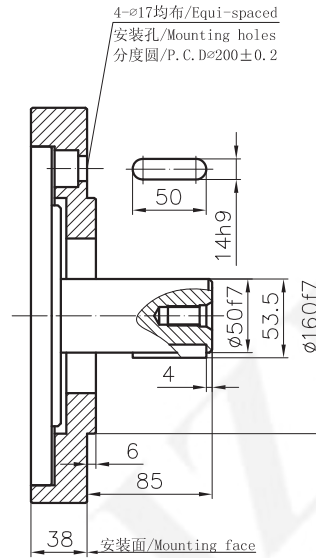


ITMS06 系列/ ITMS06 Serie

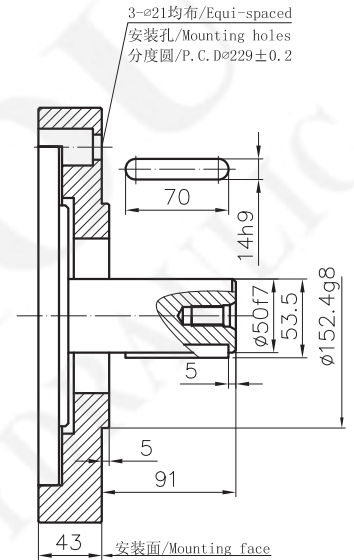
ITMS06-***N₁



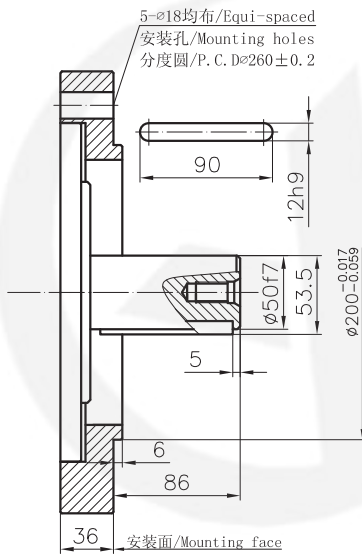
ITMS06-***B₂



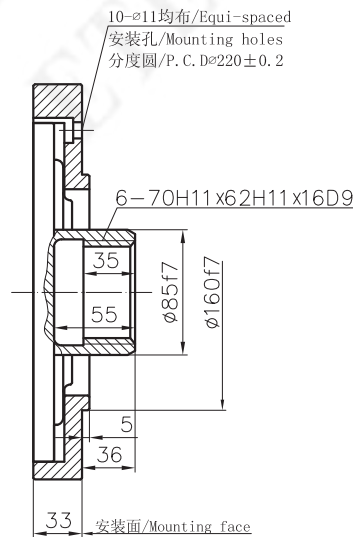
ITMS06-***B₄



ITMS06-***B₁₃

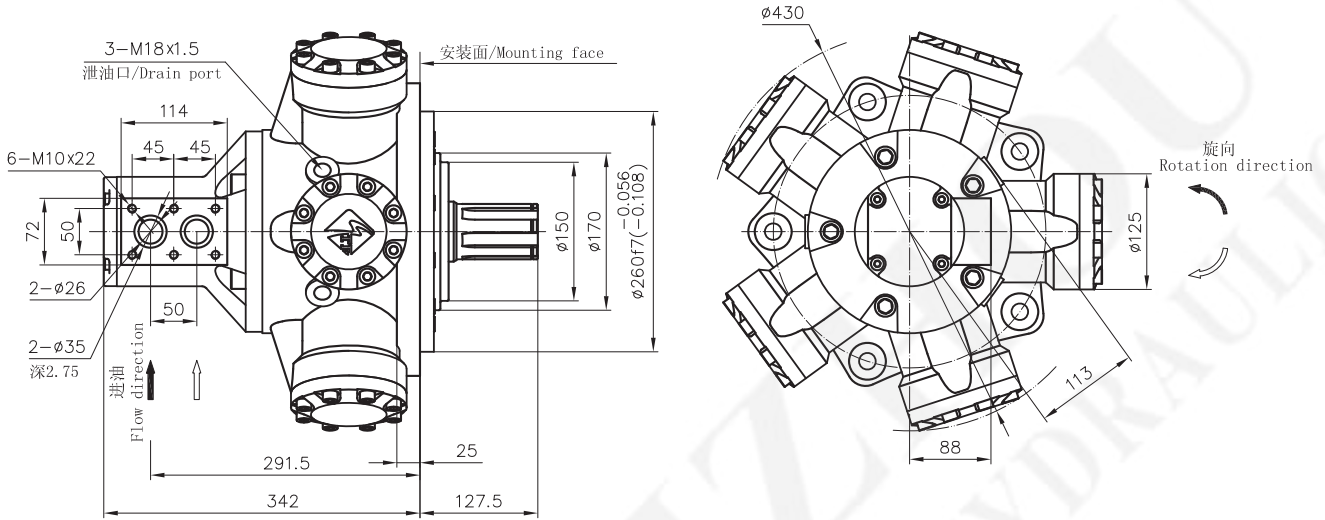


ITMS06-***I₁₁

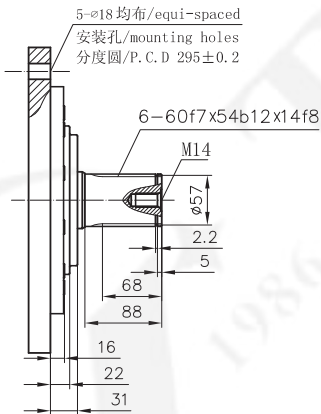


ITMS09 系列/ ITMS09 Serie

ITMS09 外形及安装尺寸/ ITMS09 Installation Dimensions

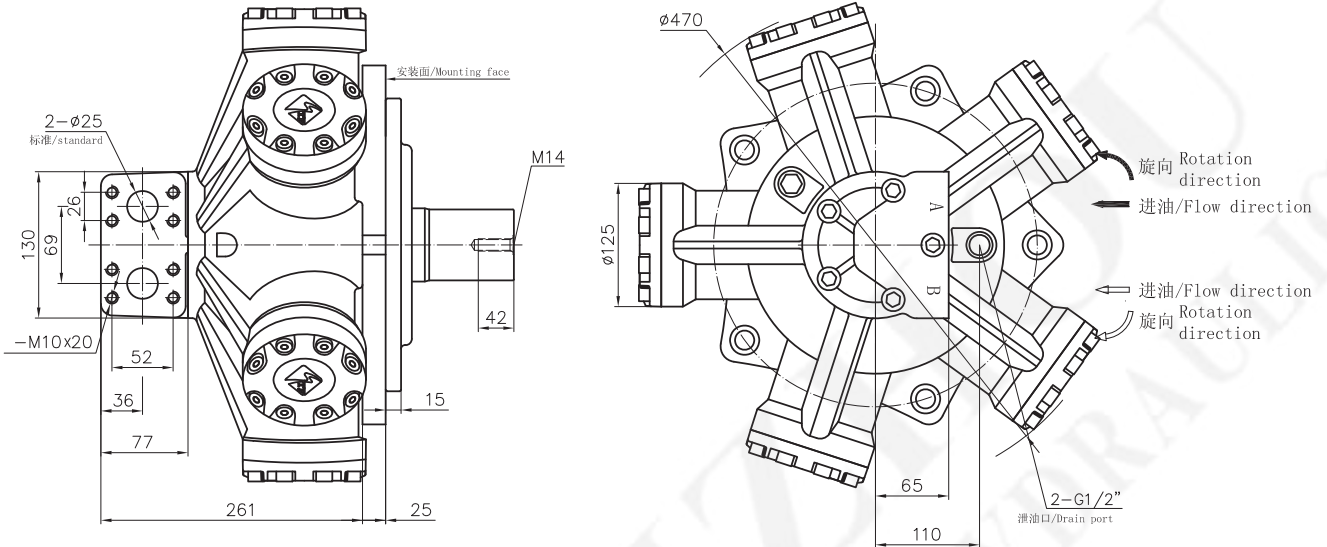


标准外花键
Involute Spline : ITMS09-***

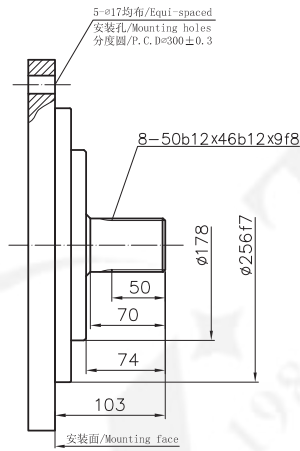


ITMS12 系列/ ITMS12 Serie

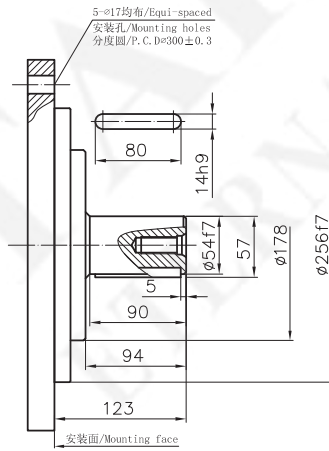
ITMS12 外形及安装尺寸/ ITMS12 Installation Dimensions



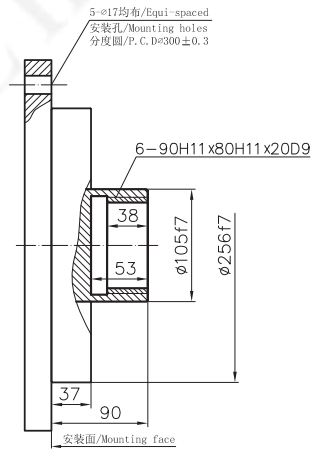
标准外花键
Involute Spline : ITMS12-***



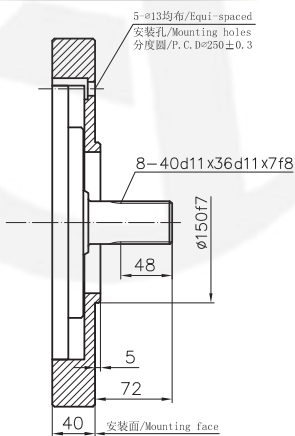
标准平键
Parallel Key : ITMS12-***B



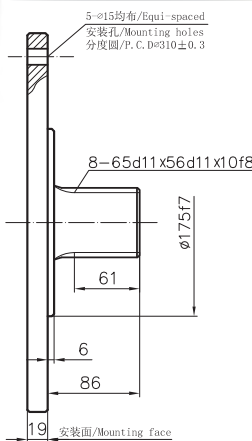
标准内花键
Female Spline : ITMS12-***I



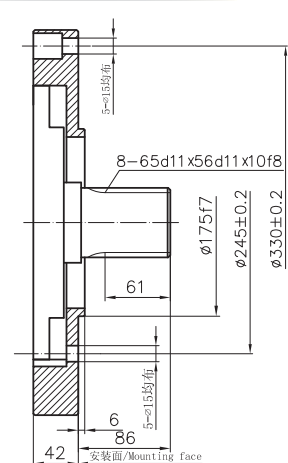
ITMS12-***SL₃



ITMS12-***SL₄

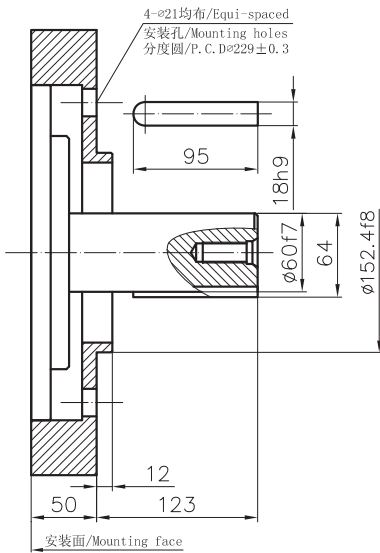


ITMS12-***SM₄

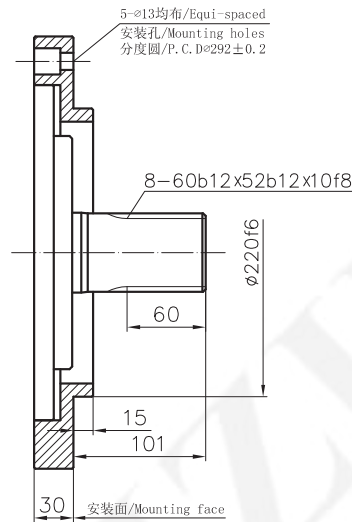


ITMS12 系列/ ITMS12 Serie

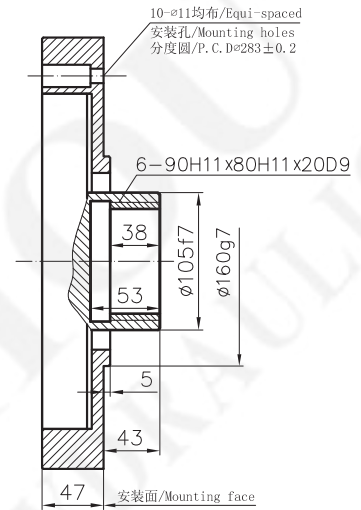
ITMS12-**B₆



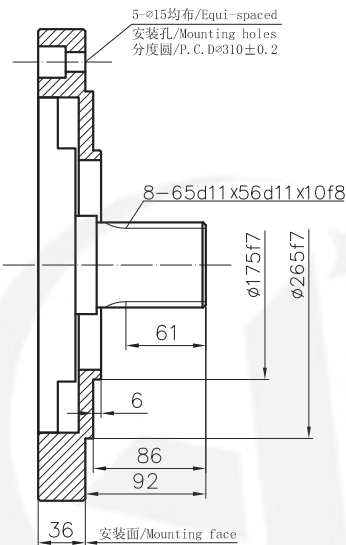
ITMS12-**N₁



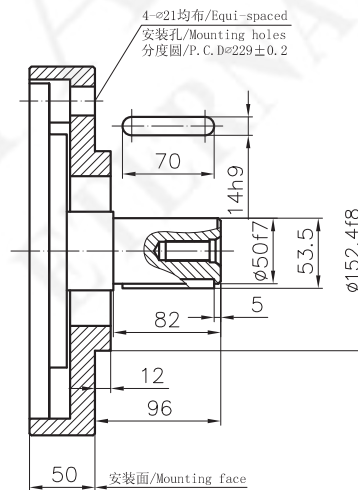
ITMS12-**I₂₁



ITMS12-**SL₅

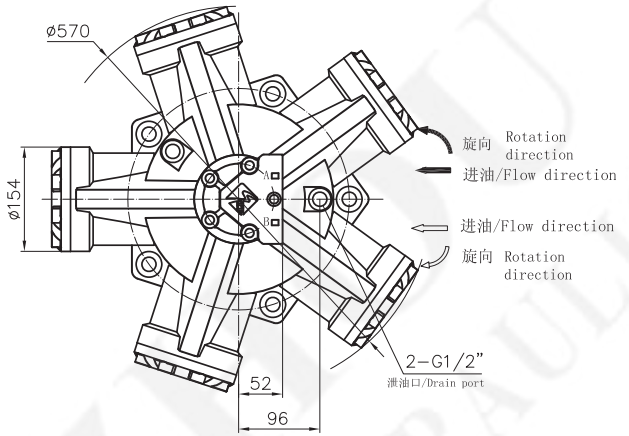
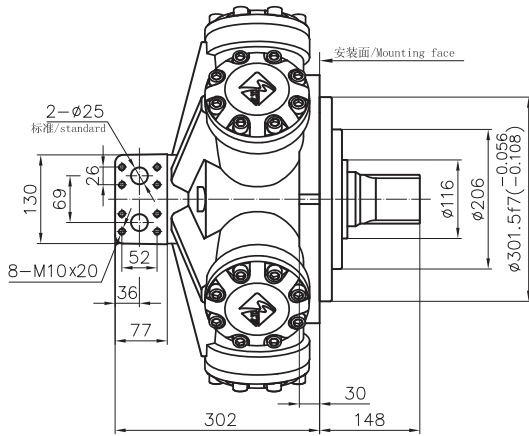


ITMS12-**B₄

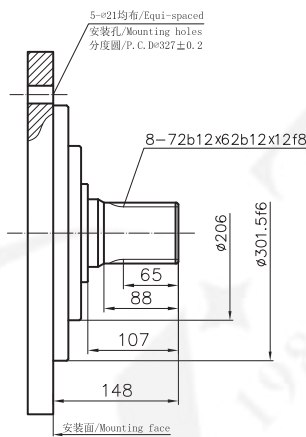


ITMS18 系列/ ITMS18 Serie

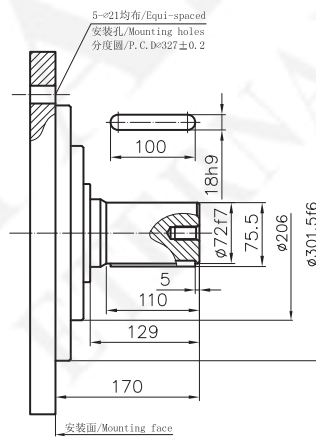
ITMS18 外形及安装尺寸/ ITMS18 Installation Dimensions



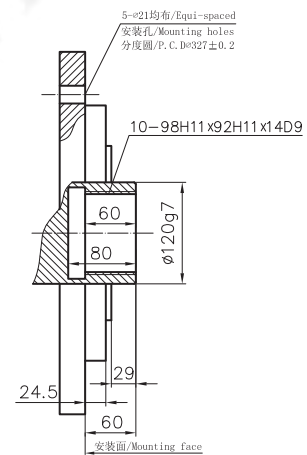
标准外花键 : ITMS18-***
Involute Spline



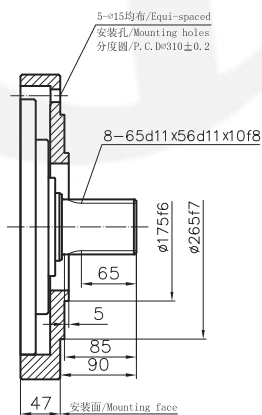
标准平键 : ITMS18-***B
Parallel Key



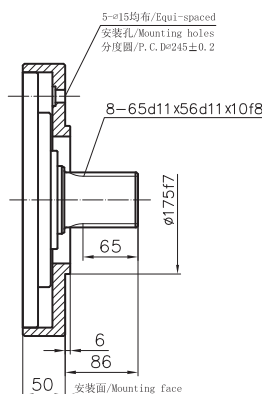
标准内花键 : ITMS18-***I
Female Spline



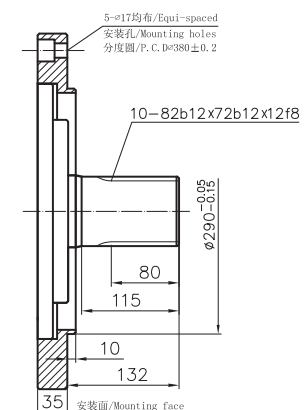
ITMS18-***SL₅



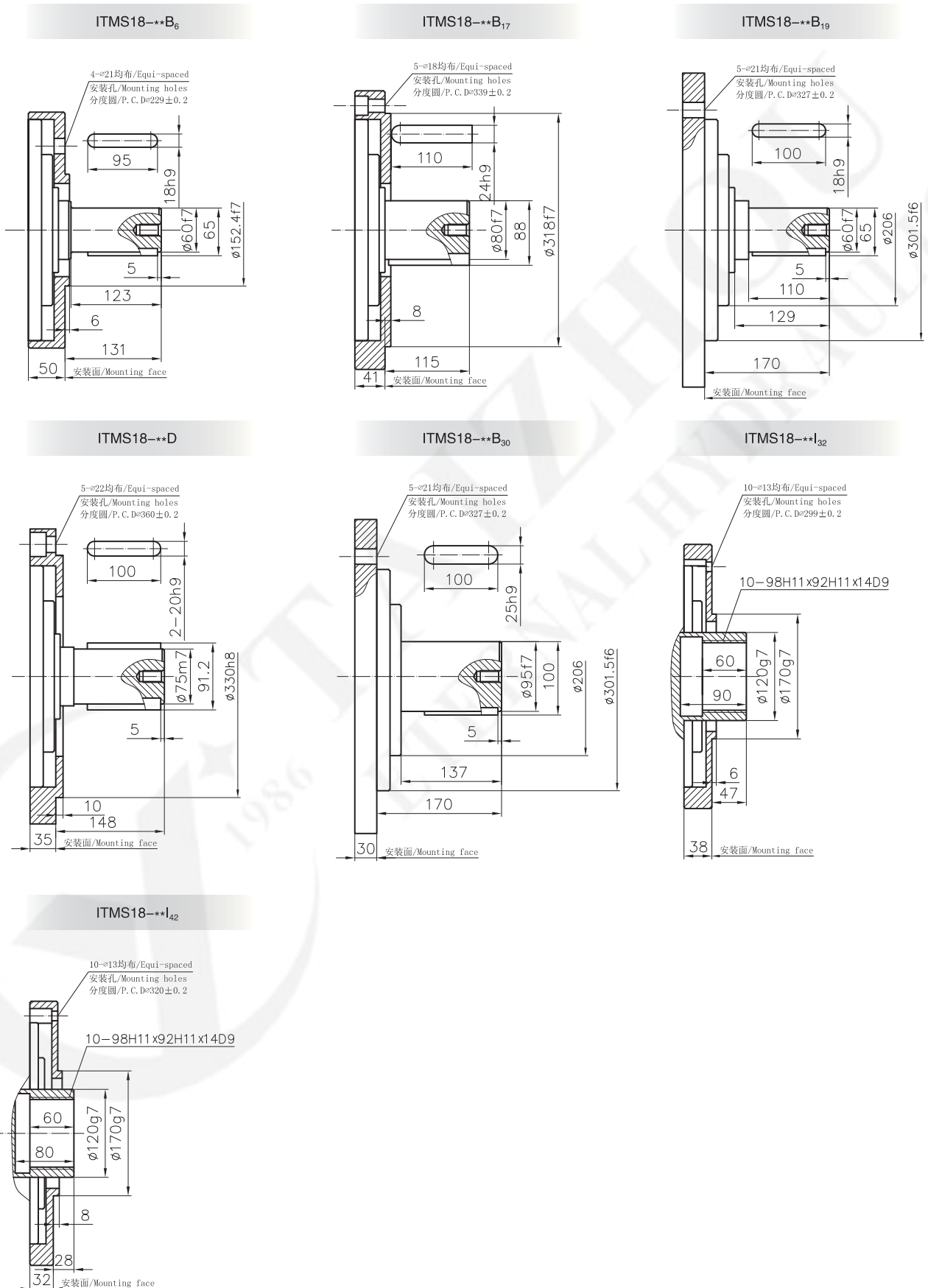
ITMS18-***SM₄



ITMS18-***N



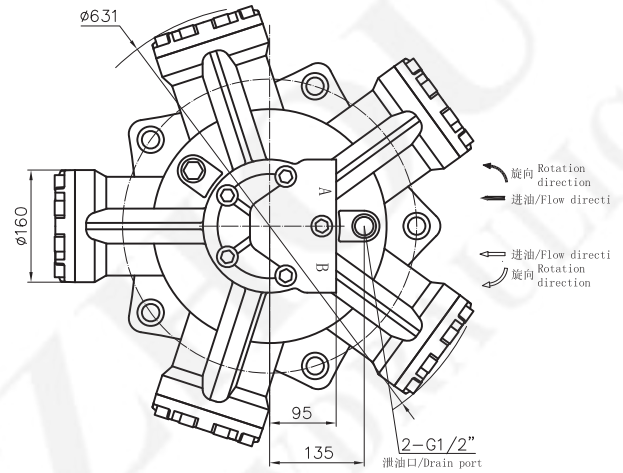
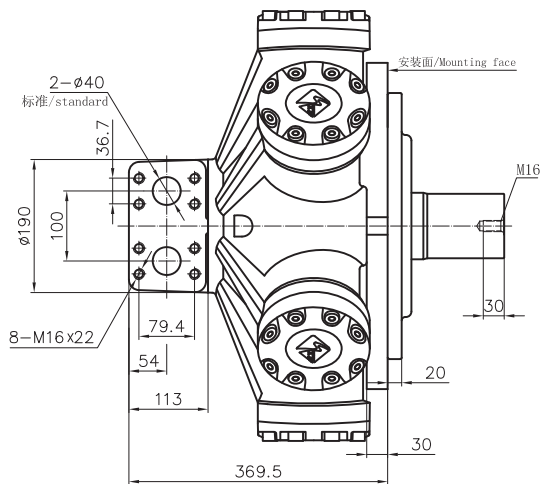
ITMS18 系列/ ITMS18 Serie



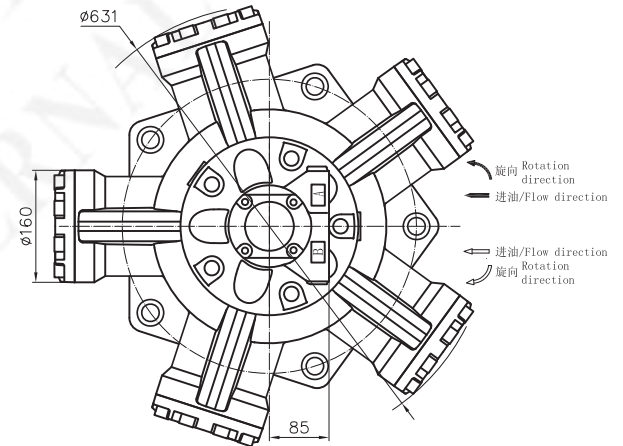
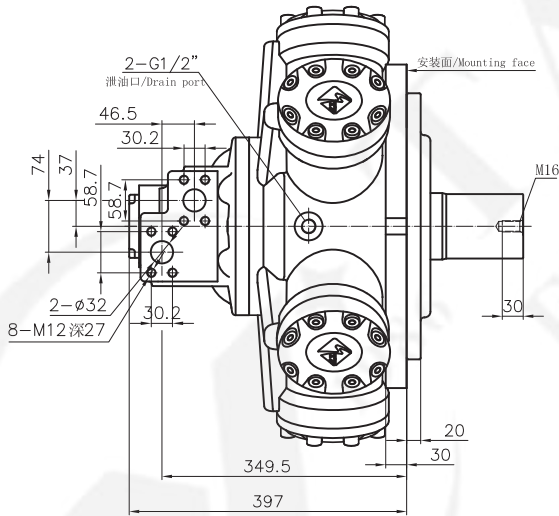
ITMS30 系列/ ITMS30 Serie

ITMS30 外形及安装尺寸/ ITMS30 Installation Dimensions

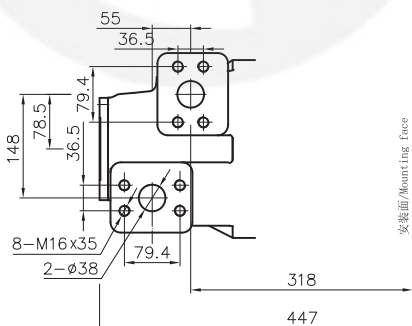
进出油口为D90的安装尺寸/With D90 distributor



进出油口为F01的安装尺寸/With F01 distributor

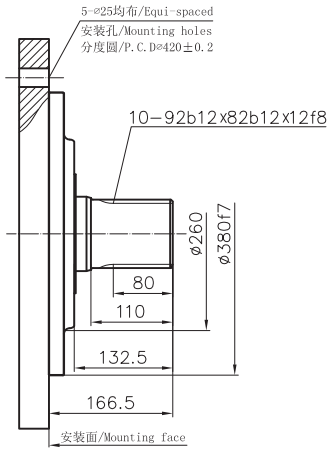


进出油口为F02的安装尺寸/With F02 distributor



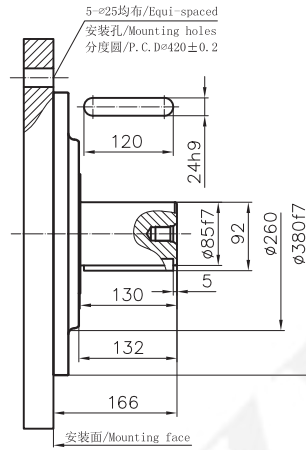
ITMS30 系列/ ITMS30 Serie

标准外花键 : ITMS30-**
Involute Spline : ITMS30-**



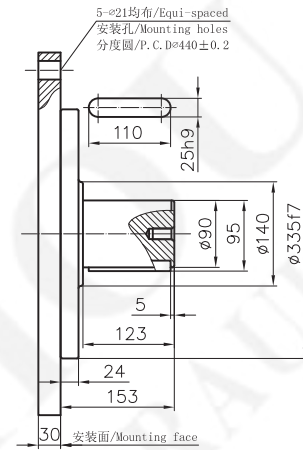
ITMS30-**SL₇

标准平键 : ITM30-**B
Parallel Key : ITM30-**B

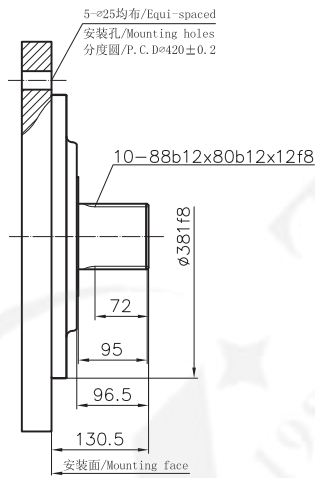


ITMS30-**B₈

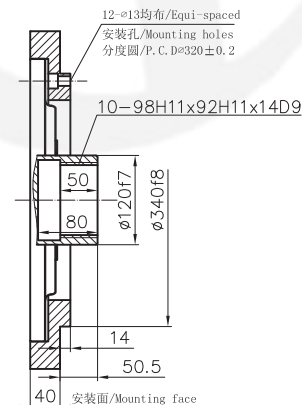
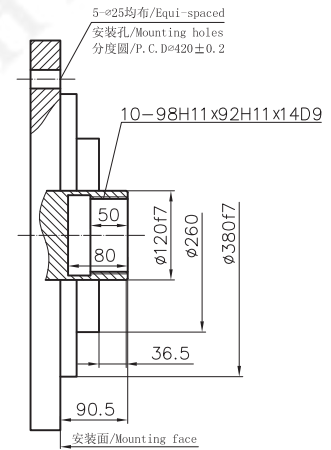
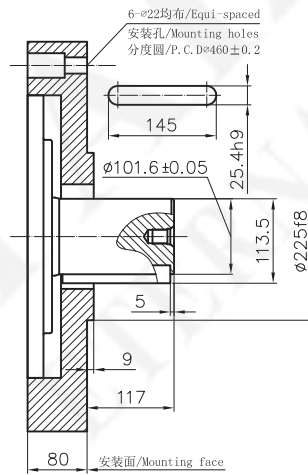
ITMS30-**CB



标准内花键 : ITMS30-**I
Female Spline : ITMS30-**I

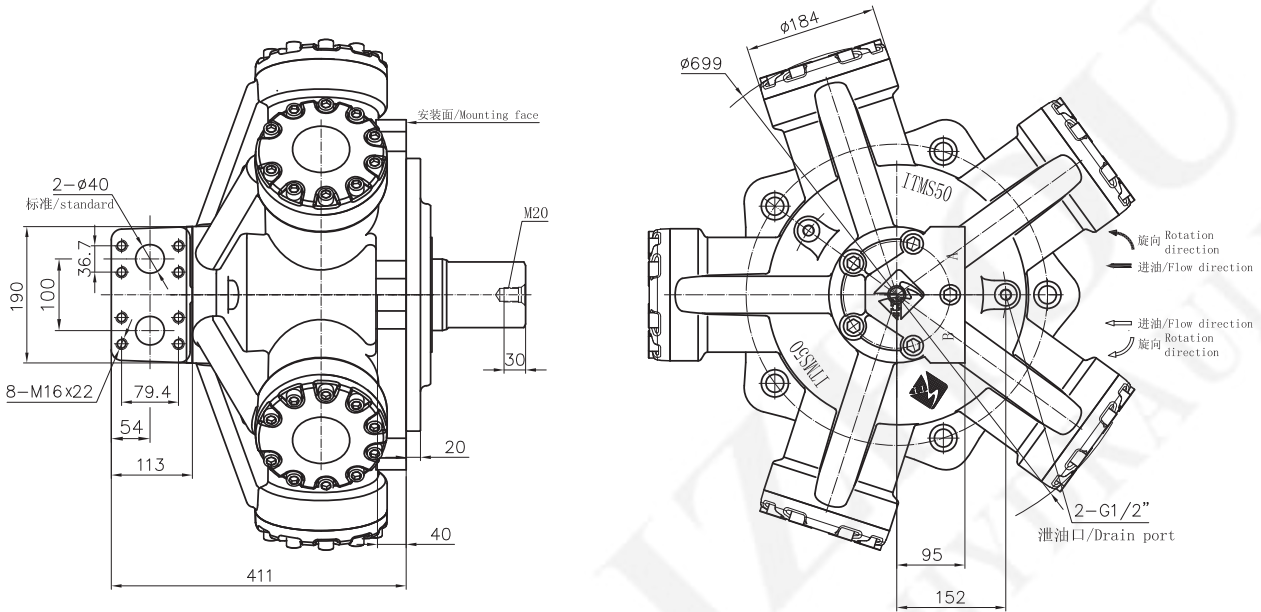


ITMS30-**I₅₃₂

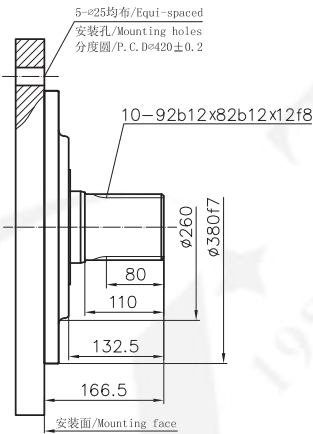


ITMS50 系列/ ITMS50 Serie

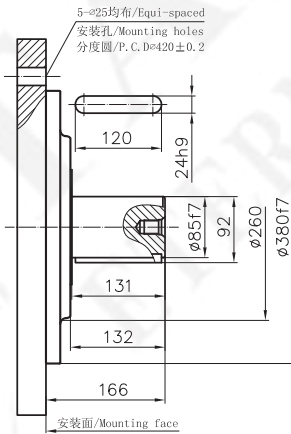
ITMS50 外形及安装尺寸/ ITMS50 Installation Dimensions



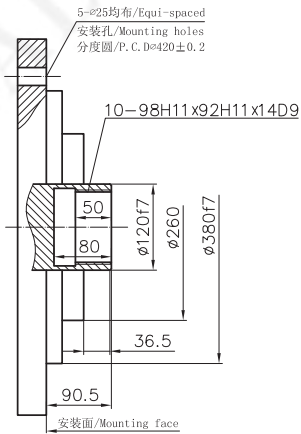
标准外花键 : ITMS50-***
Involute Spline : ITMS50-***



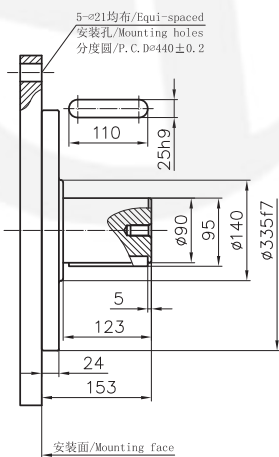
标准平键 : ITMS50-***B
Parallel Key : ITMS50-***B



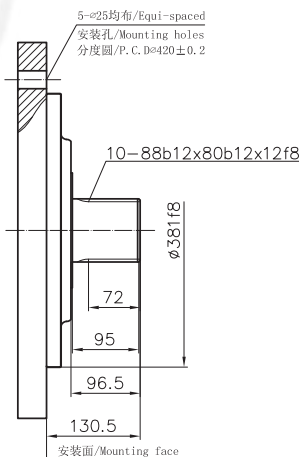
标准内花键 : ITMS50-***I
Female Spline : ITMS50-***I



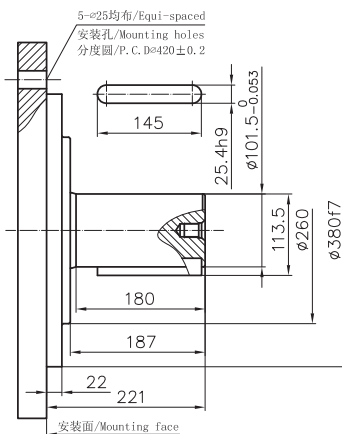
ITMS50-***CB



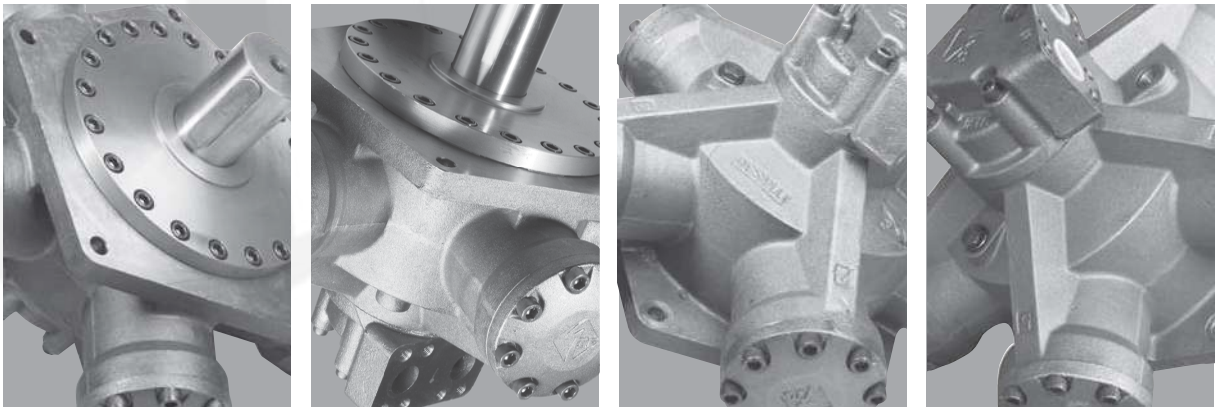
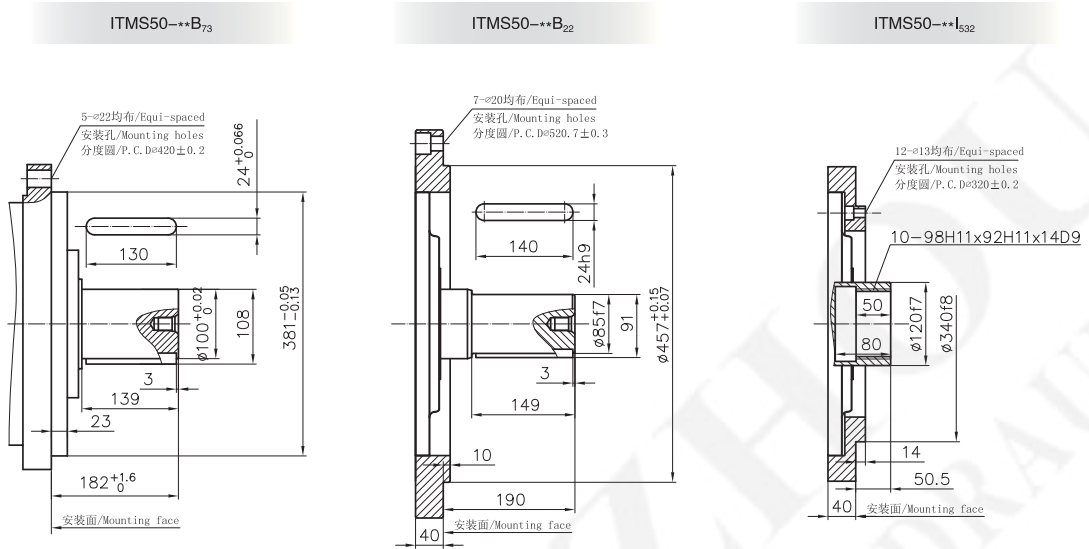
ITMS50-***SL₇



ITMS50-***B₁₀

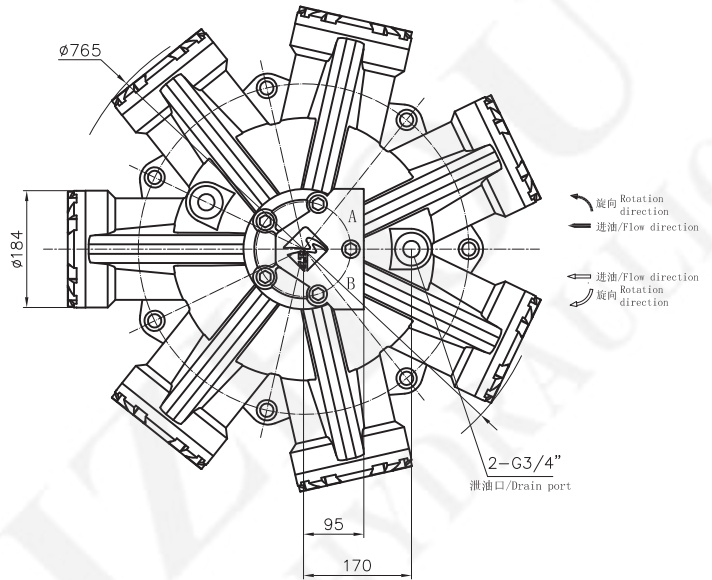
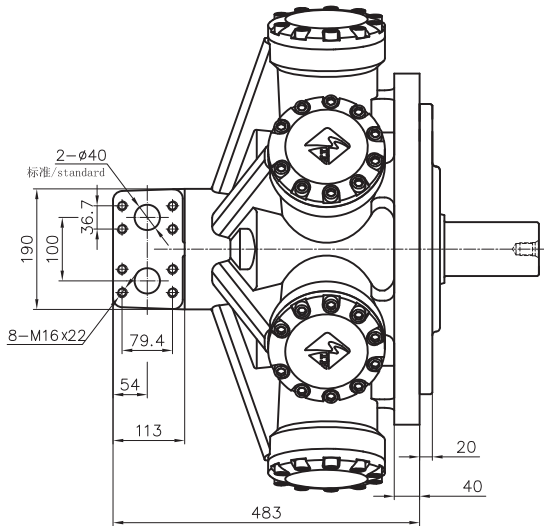


ITMS50 系列/ ITMS50 Serie

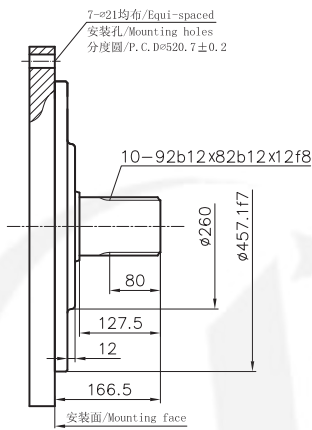


ITMS70 系列/ ITMS70 Serie

ITMS70 外形及安装尺寸/ ITMS70 Installation Dimensions

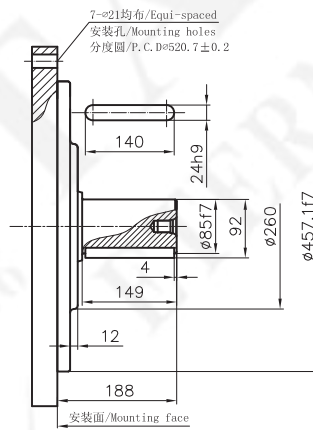


标准外花键 : ITMS70---
Involute Spline : ITMS70---

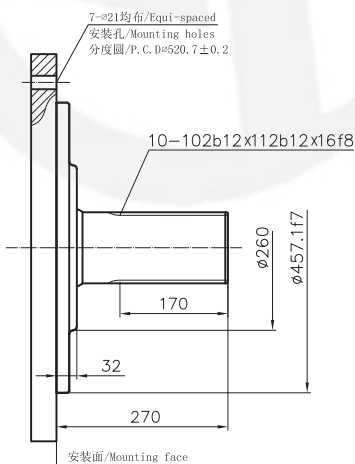
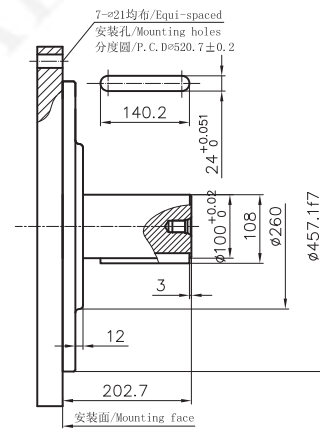


ITMS70---a₃

标准平键 : ITMS70---B
Parallel Key : ITMS70---B

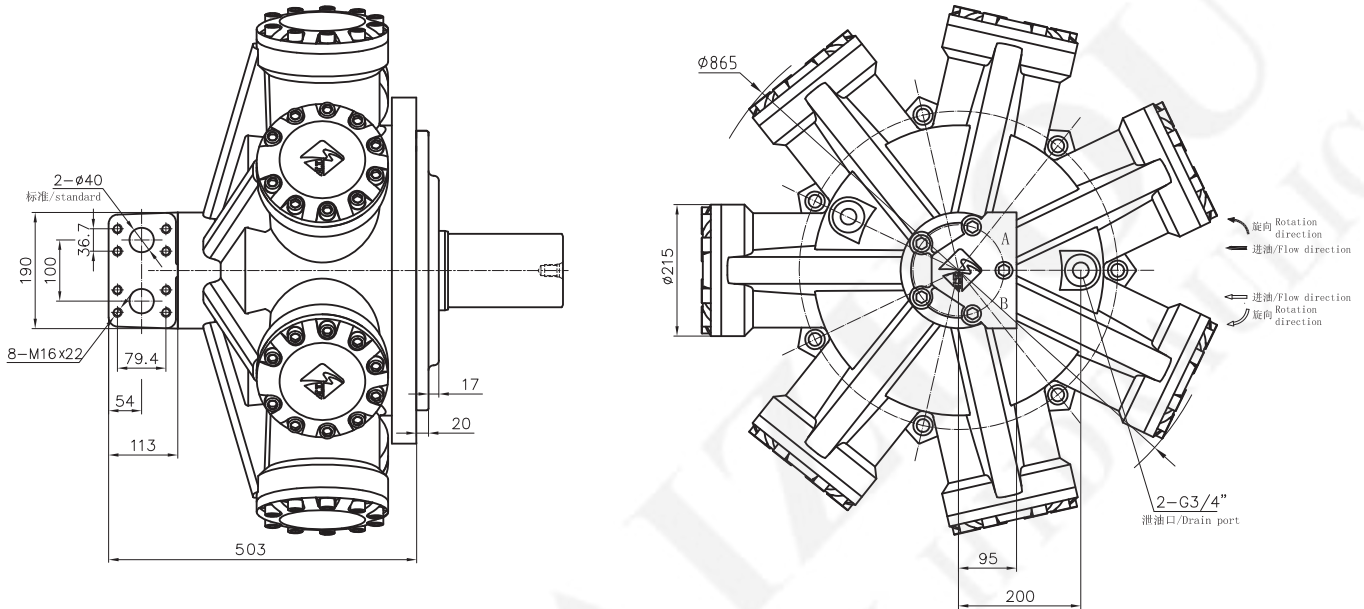


ITMS70---B₇₄



ITMS100 系列/ ITMS100 Serie

ITMS100 外形及安装尺寸/ ITMS100 Installation Dimensions



标准外花键 : ITMS100-**
Involute Spline

标准平键 : ITMS100-**B
Parallel Key

ITMS100-**a₃

