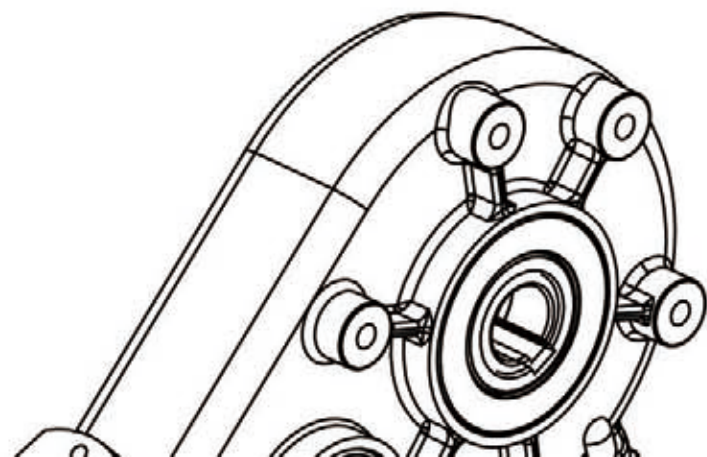


TAIZHOU
ETERNAL HYDRAULIC

Reduction Gearbox



TECHNICAL INFORMATION

PRODUCT INTRODUCE

Koreson gearboxes are designed for connecting gear motors , gerotor motors , piston motors and other used to slow down mechanism .

- The gears and shafts of gearboxes are all use high strength alloy steel , they own great toughness and wear resistance through the corresponding processing and heat treatment .
- The covers and housings are made in cast iron or ductile iron , and the material density , strength and appearance are very good , you can choose the gearbox of different materials according to the power or torque you use .
- All machining parts are CNC lathe, CNC hobbing machine, CNC shaving machine, machining center and other precision machine tools for processing , They can guarantee the dimensional accuracy of each part very well .
- Other parts all meet the corresponding national standards , they have excellent performance and long service life .

ASSEMBLY AND USE INDICATIONS

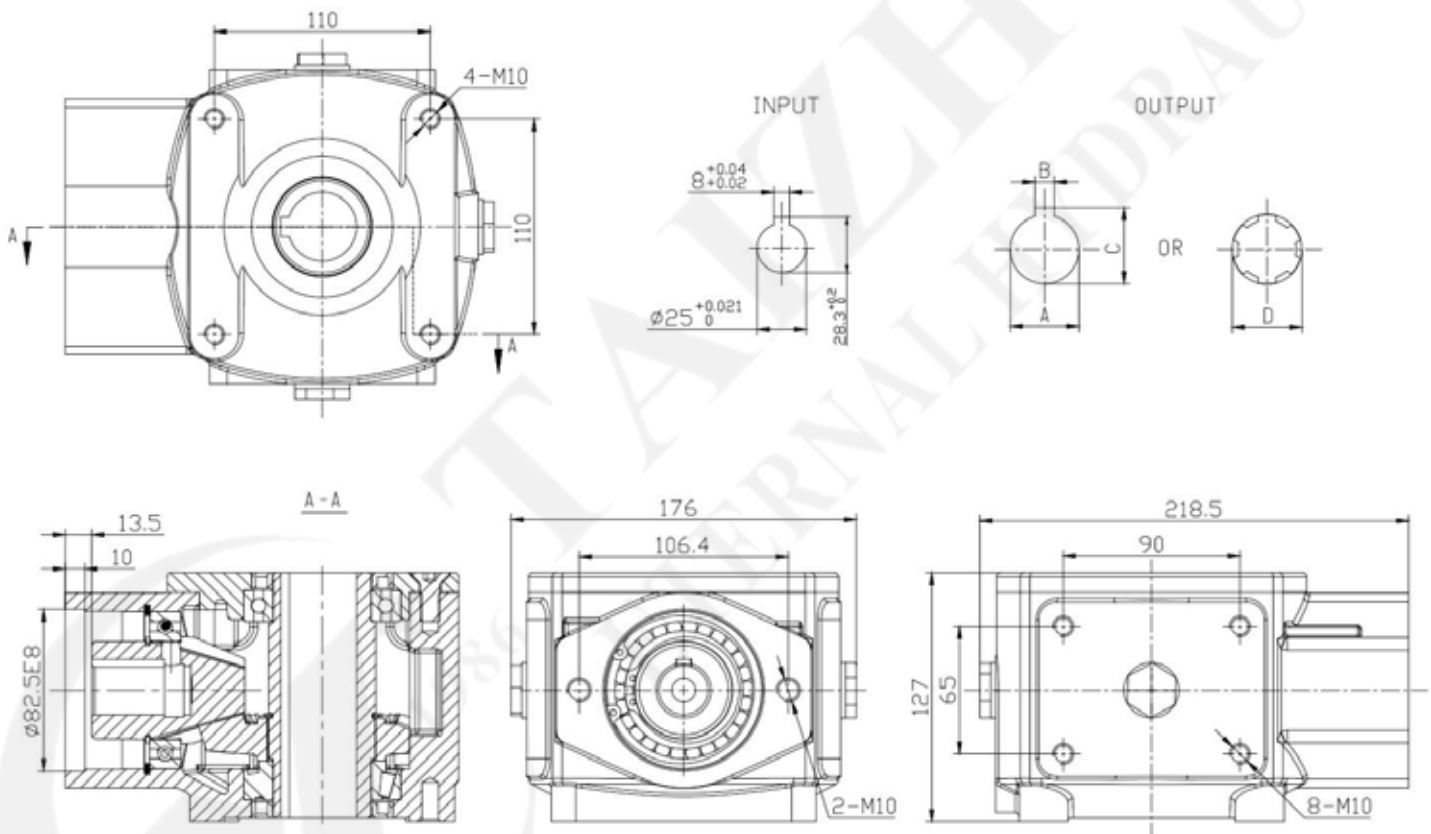
Please strictly follow assembly and use indications for top performance and longer life of the gearboxes .

- Different input or output speeds can be suitable for our gearboxes , but make sure they don't go faster than 1,000 R.P.M each , because the gearbox will increase the wear and heat seriously if the rotation speed is too high , and cause parts to reduce the service life .
- The torques mentioned in the technical charts of gearboxes refer to continuous duty , and torques under intermittent working conditions can be exceeded by 10% .
- We recommend to use oil type CE80W90 to ensure longest life and proper operation of the unit , Carry out first oil change after 50 to 60 working hours , and change the oil every 600-800 hours .
- Continuous working temperature should not exceed 80℃ , because high temperature will accelerate the aging of seals .
- The emptying of the gearbox should be made immediately after working , with still oil hot , in order to avoid the deposition of sludge ; check frequently the oil lever and add up the oil whenever necessary .

Cast-iron reduction gearbox KRT90 series



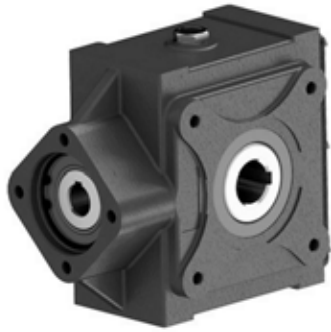
- ★ Shell is made of cast iron or ductile iron .
- ★ Gears and shafts are made of low carbon alloy steel through heating treatment .
- ★ Low noise , high torque and long service life .
- ★ Widely used in variety of agricultural and garden machinery.



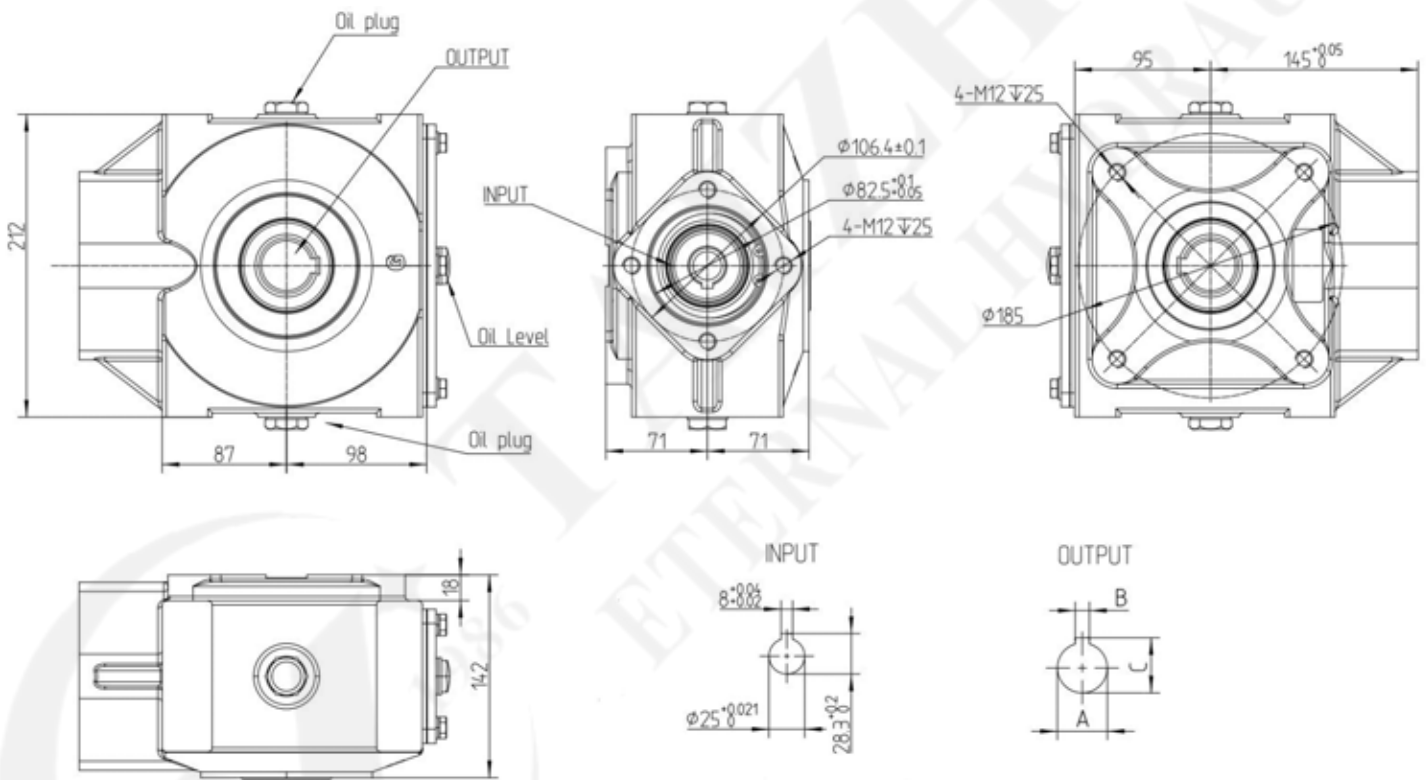
Ratio	Output torque (N • m)	Lubrication oil	Work temperature	Weight (Kg)
3.1/1	900	ESSO GEAR OIL CE80W90	-20° ~ 80°	11.5

Type	Dimensions			
	A	B	C	D
KRT90-1	Φ 30	8	33.8	
KRT90-2	Φ 35	10	38.8	
KRT90-3				1 3/8" Z6

Cast-iron reduction gearbox KRT120 series



- ★ Shell is made of cast iron or ductile iron .
- ★ Gears and shafts are made of low carbon alloy steel through heating treatment .
- ★ Low noise , high torque and long service life .
- ★ Widely used in variety of agricultural and garden machinery.



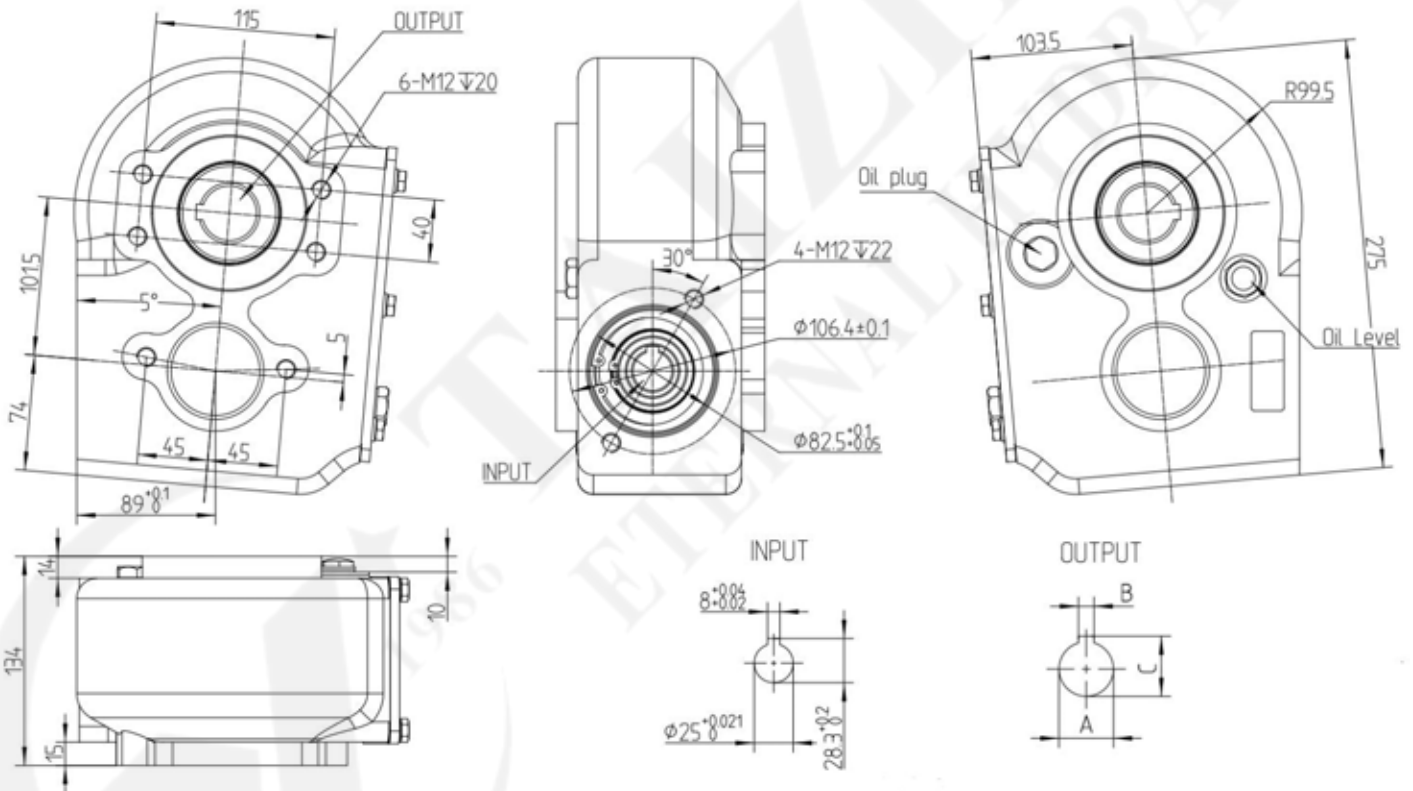
Ratio	Output torque (N • m)	Lubrication oil	Work temperature	Weight (Kg)
4/1	1200	ESSO GEAR OIL CE80W90	-20° ~ 80°	18.5

Type	Dimensions		
	A	B	C
KRT120-1	Φ 35	10	38.6
KRT120-2	Φ 40	12	43.3

Cast-iron reduction gearbox KRT160 series



- ★ Shell is made of cast iron or ductile iron .
- ★ Gears and shafts are made of low carbon alloy steel through heating treatment .
- ★ Low noise , high torque and long service life .
- ★ Widely used in variety of agricultural and garden machinery.



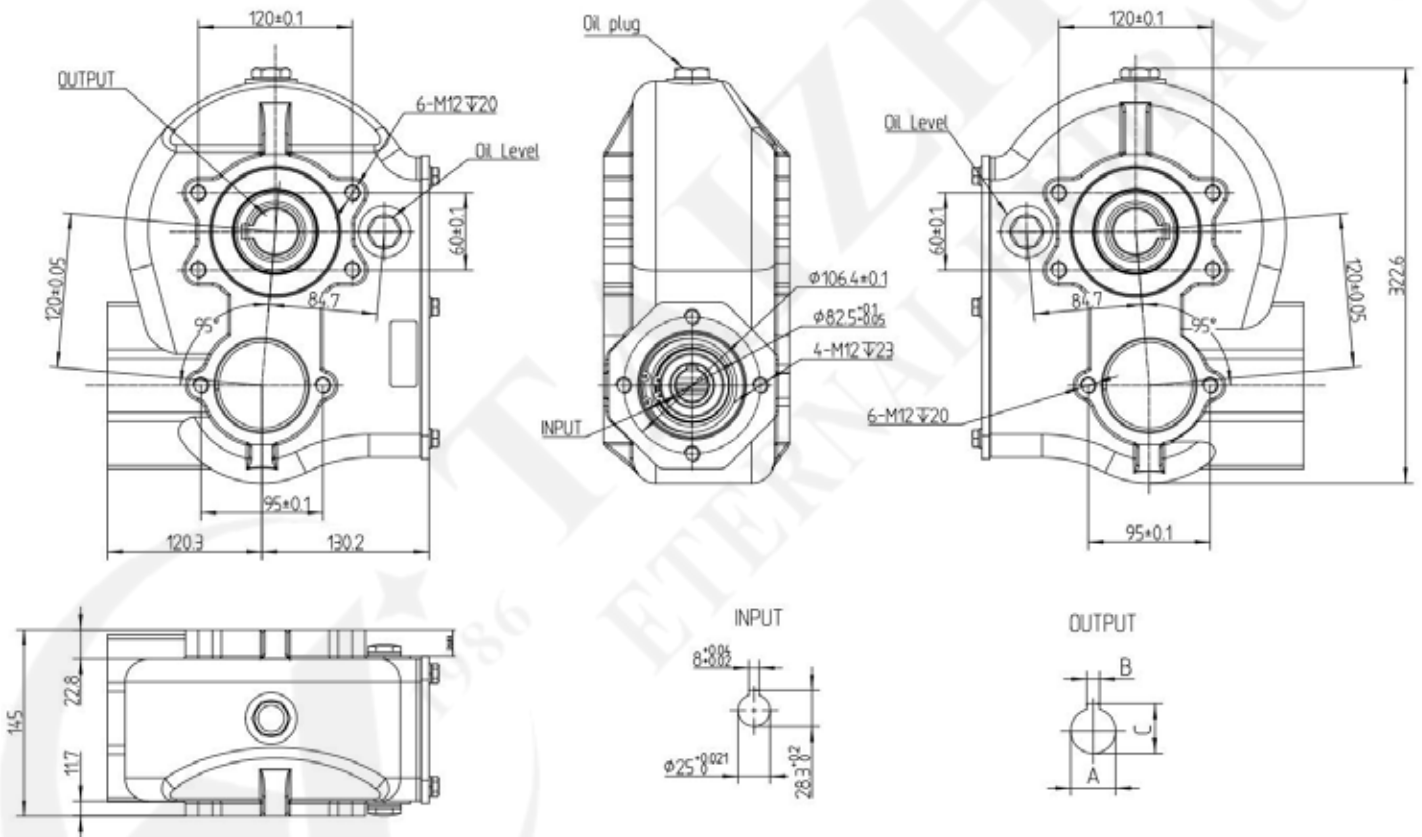
Ratio	Output torque (N • m)	Lubrication oil	Work temperature	Weight (Kg)
8.15/1	1500	ESSO GEAR OIL CE80W90	-20° ~ 80°	30.5

Type	Dimensions		
	A	B	C
KRT160-1	Φ 35	10	38.6
KRT160-2	Φ 40	12	43.3

Cast-iron reduction gearbox KRT190 series



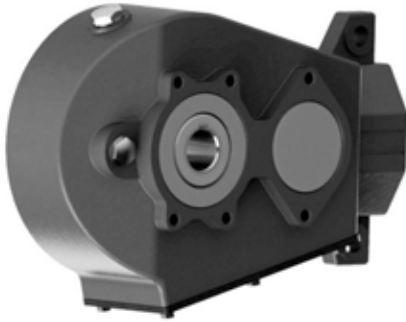
- ★ Shell is made of cast iron or ductile iron .
- ★ Gears and shafts are made of low carbon alloy steel through heating treatment .
- ★ Low noise , high torque and long service life .
- ★ Widely used in variety of agricultural and garden machinery.



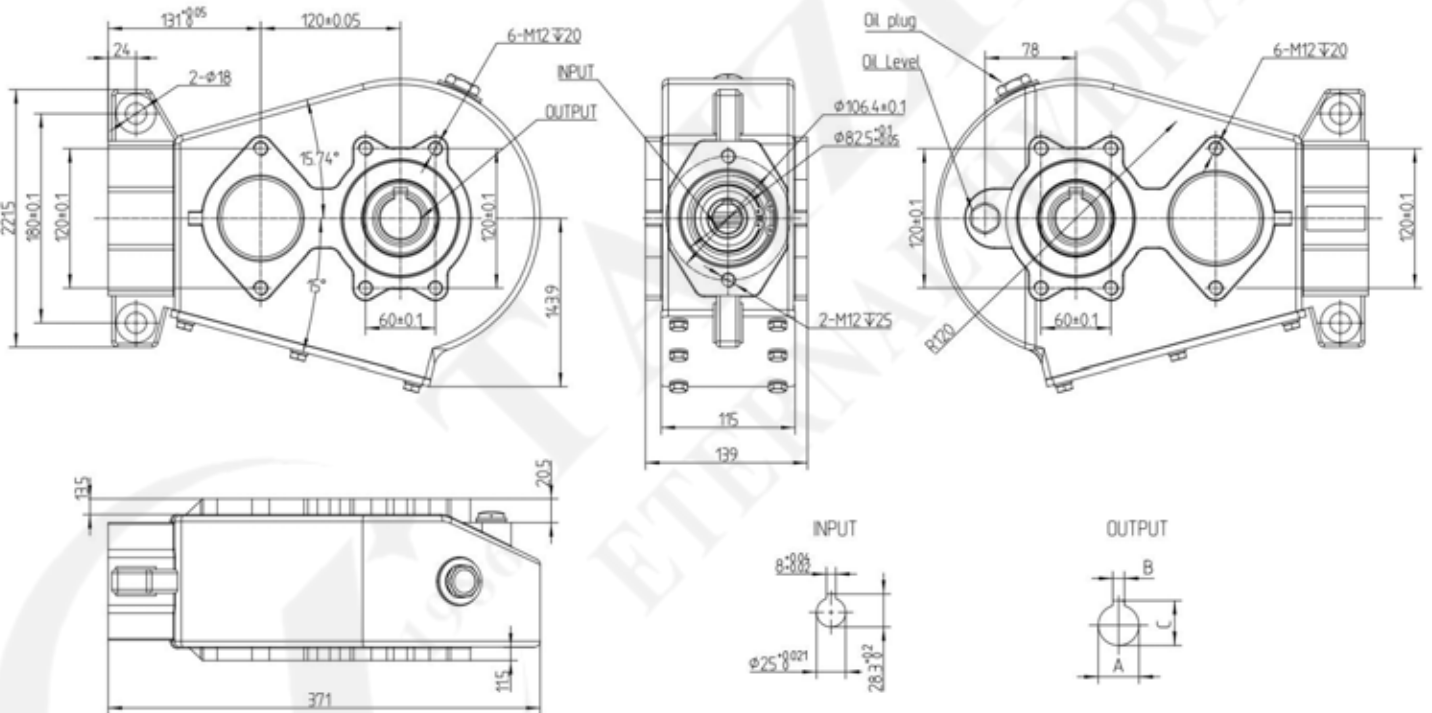
Ratio	Output torque (N • m)	Lubrication oil	Work temperature	Weight (Kg)
10.2/1	1900	ESSO GEAR OIL CE80W90	-20° ~ 80°	28.5

Type	Dimensions		
	A	B	C
KRT190-1	Φ 35	10	38.6
KRT190-2	Φ 40	12	43.3
KRT190-3	Φ 45	12	48.8

Cast-iron reduction gearbox KRT200 series



- ★ Shell is made of cast iron or ductile iron .
- ★ Gears and shafts are made of low carbon alloy steel through heating treatment .
- ★ Low noise , high torque and long service life .
- ★ Widely used in variety of agricultural and garden machinery.



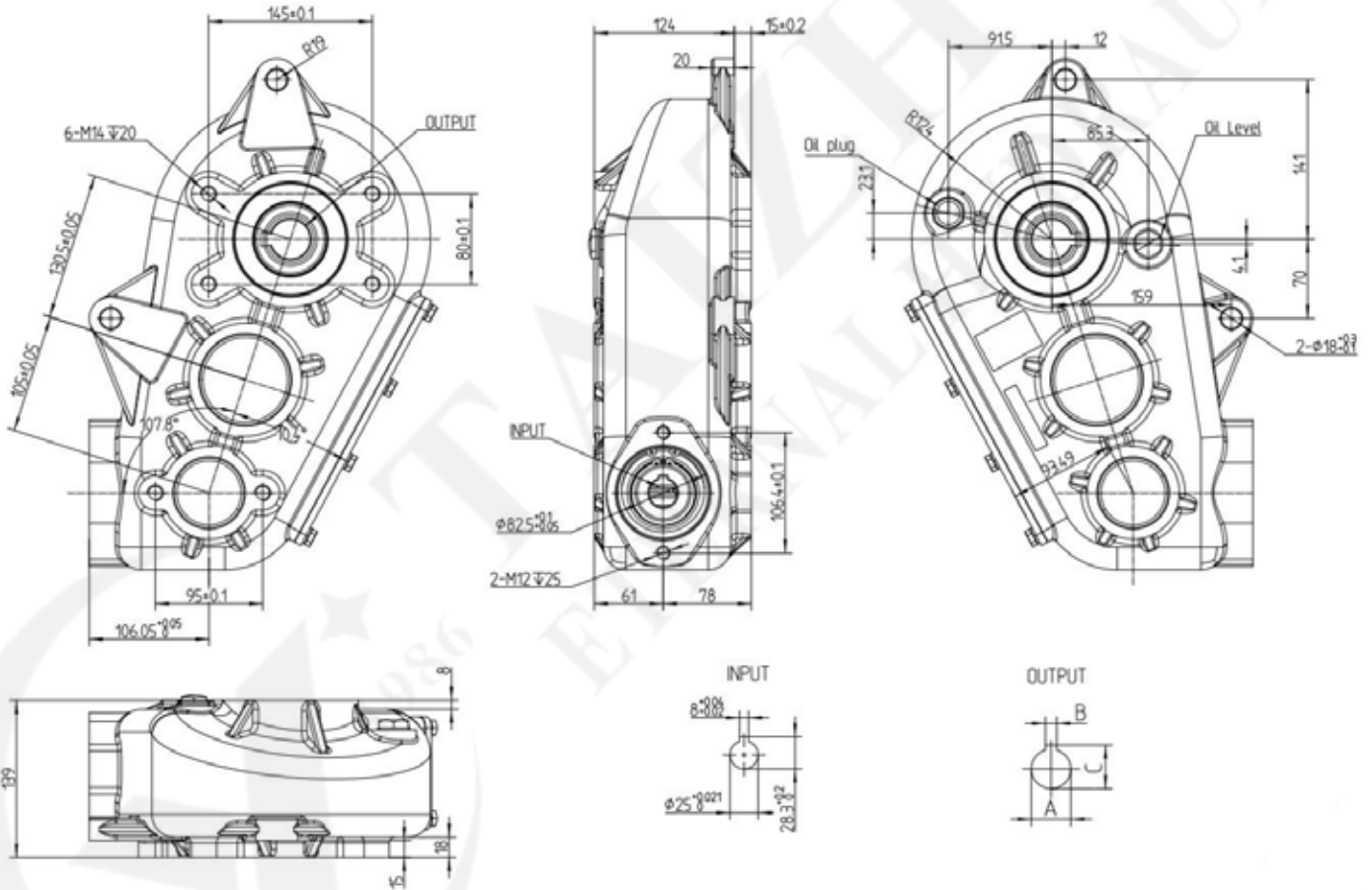
Ratio	Output torque (N • m)	Lubrication oil	Work temperature	Weight (Kg)
16.43/1	2000	ESSO GEAR OIL CE80W90	-20° ~ 80°	28.5

Type	Dimensions		
	A	B	C
KRT200-1	Φ 35	10	38.6
KRT200-2	Φ 40	12	43.3
KRT200-3	Φ 45	12	48.8

Cast-iron reduction gearbox KRT300 series



- ★ Shell is made of cast iron or ductile iron .
- ★ Gears and shafts are made of low carbon alloy steel through heating treatment .
- ★ Low noise , high torque and long service life .
- ★ Widely used in variety of agricultural and garden machinery.



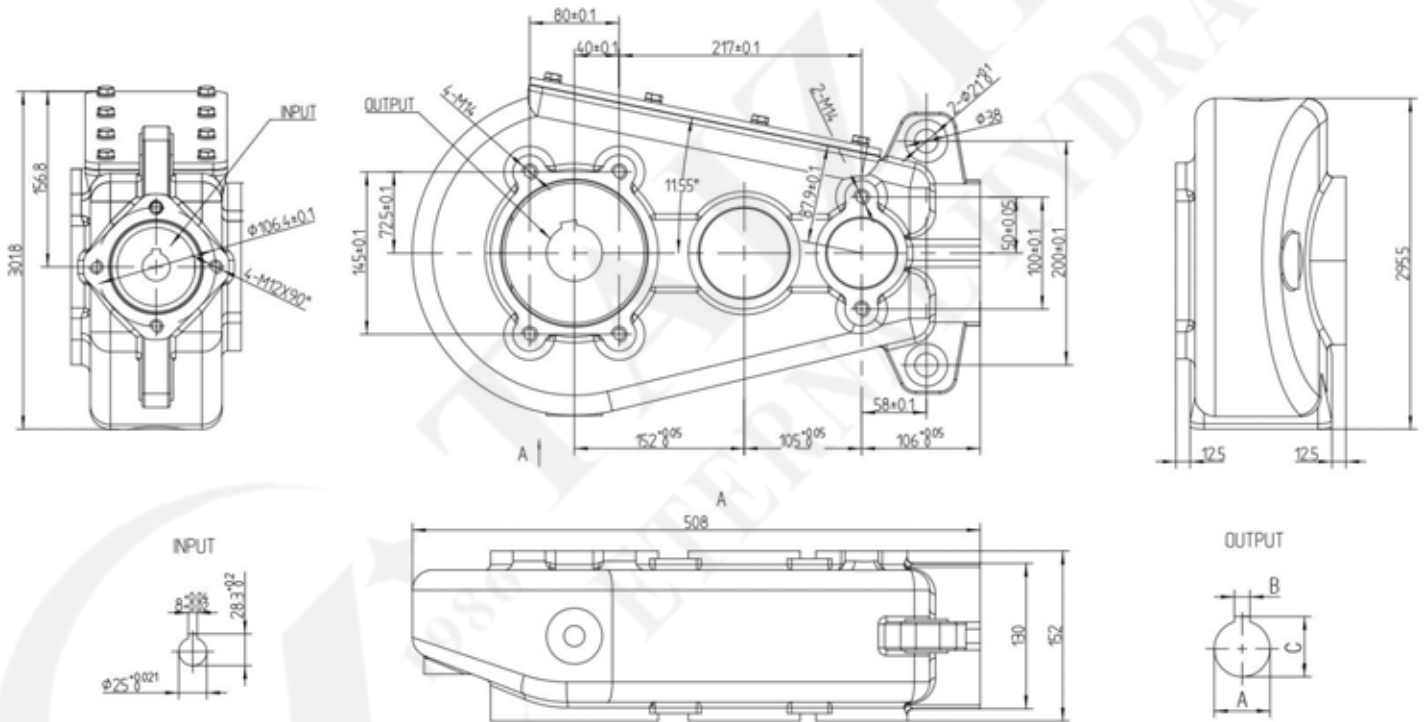
Ratio	Output torque (N • m)	Lubrication oil	Work temperature	Weight (Kg)
29.5/1	3000	ESSO GEAR OIL CE80W90	-20° ~ 80°	36.5

Type	Dimensions		
	A	B	C
KRT300-1	Φ 35	10	38.6
KRT300-2	Φ 40	12	43.3
KRT300-3	Φ 45	12	48.8

Cast-iron reduction gearbox KRT400 series



- ★ Shell is made of cast iron or ductile iron .
- ★ Gears and shafts are made of low carbon alloy steel through heating treatment .
- ★ Low noise , high torque and long service life .
- ★ Widely used in variety of agricultural and garden machinery.



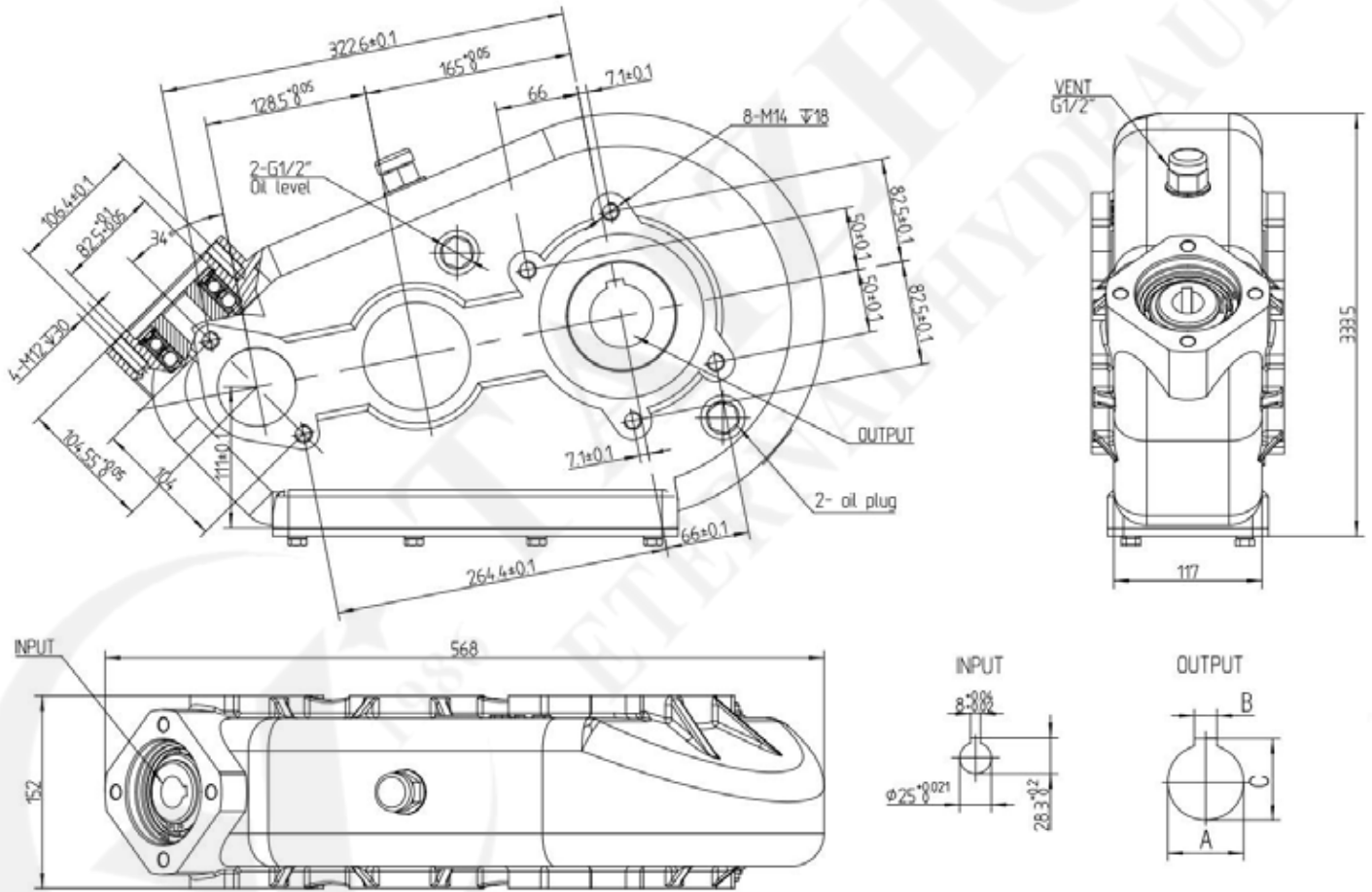
Ratio	Output torque (N • m)	Lubrication oil	Work temperature	Weight (Kg)
35.35/1	4000	ESSO GEAR OIL CE80W90	-20° ~ 80°	57.5

Type	Dimensions		
	A	B	C
KRT400-1	Φ 50	14	53.8
KRT400-2	Φ 55	16	59.3
KRT400-3	Φ 60	18	64.4

Cast-iron reduction gearbox KRT500 series



- ★ Shell is made of cast iron or ductile iron .
- ★ Gears and shafts are made of low carbon alloy steel through heating treatment .
- ★ Low noise , high torque and long service life .
- ★ Widely used in variety of agricultural and garden machinery.



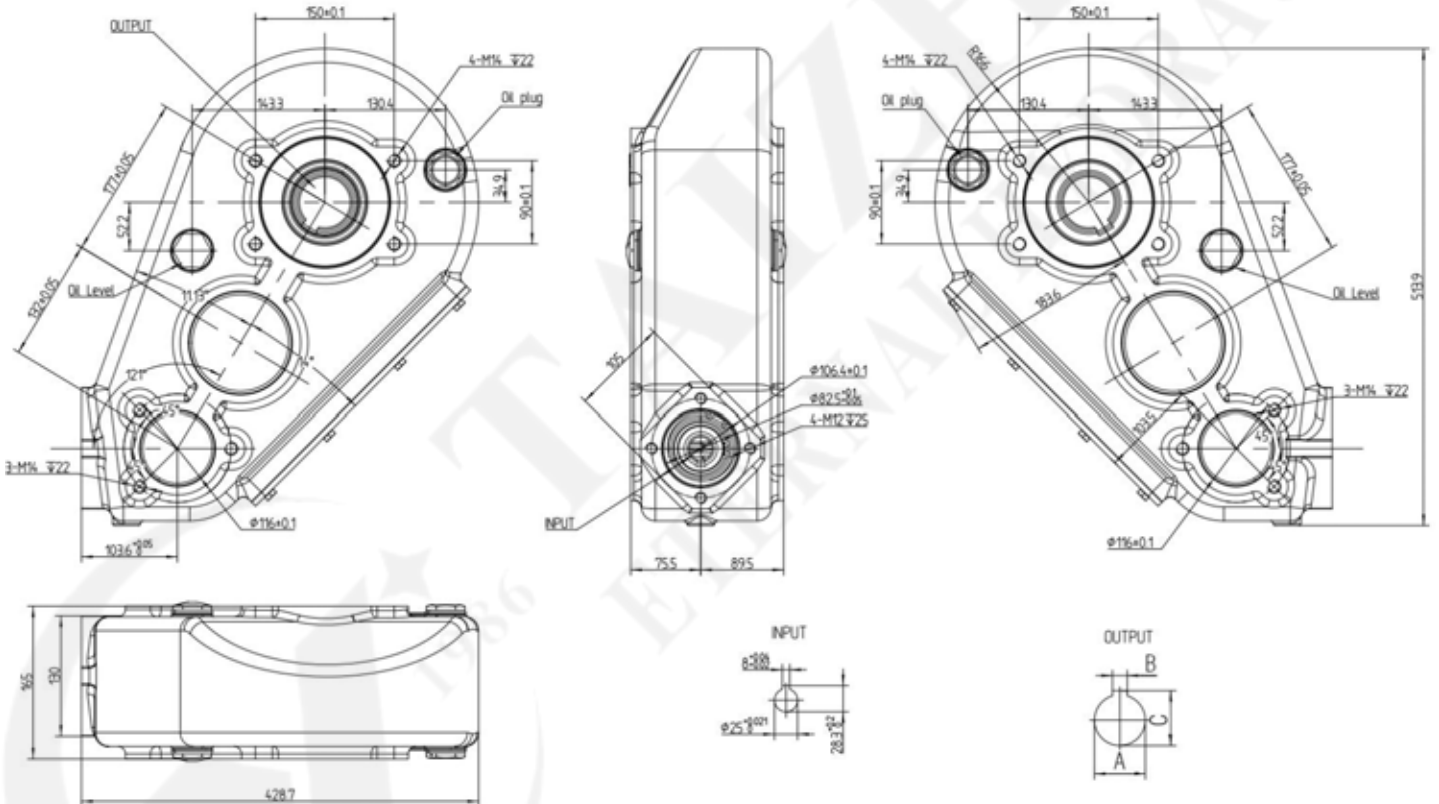
Ratio	Output torque (N • m)	Lubrication oil	Work temperature	Weight (Kg)
43.6/1	5000	ESSO GEAR OIL CE80W90	-20° ~ 80°	55.5

Type	Dimensions		
	A	B	C
KRT500-1	Φ 50	14	53.8
KRT500-2	Φ 55	16	59.3
KRT500-3	Φ 60	18	64.4

Cast-iron reduction gearbox KRT650 series



- ★ Shell is made of cast iron or ductile iron .
- ★ Gears and shafts are made of low carbon alloy steel through heating treatment .
- ★ Low noise , high torque and long service life .
- ★ Widely used in variety of agricultural and garden machinery.



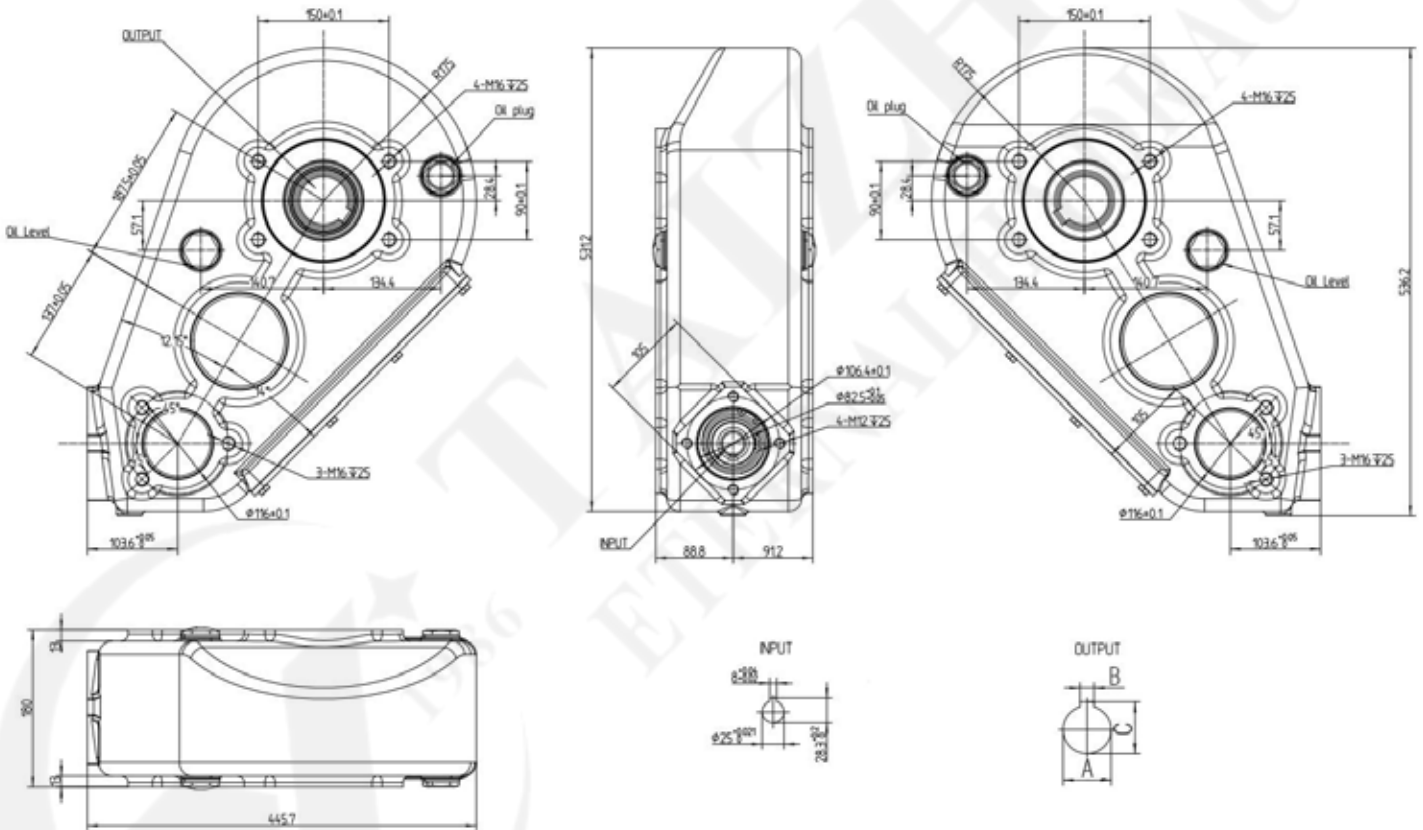
Ratio	Output torque (N • m)	Lubrication oil	Work temperature	Weight (Kg)
37.8/1	6500	ESSO GEAR OIL CE80W90	-20° ~ 80°	68.5

Type	Dimensions		
	A	B	C
KRT650-1	Φ 55	16	59.3
KRT650-2	Φ 60	18	64.4
KRT650-3	Φ 65	18	69.4

Cast-iron reduction gearbox KRT800 series



- ★ Shell is made of cast iron or ductile iron .
- ★ Gears and shafts are made of low carbon alloy steel through heating treatment .
- ★ Low noise , high torque and long service life .
- ★ Widely used in variety of agricultural and garden machinery.



Ratio	Output torque (N • m)	Lubrication oil	Work temperature	Weight (Kg)
31.67/1	8000	ESSO GEAR OIL CE80W90	-20° ~ 80°	79.5

Type	Dimensions		
	A	B	C
KRT800-1	Φ 55	16	59.3
KRT800-2	Φ 60	18	64.4
KRT800-3	Φ 65	18	69.4